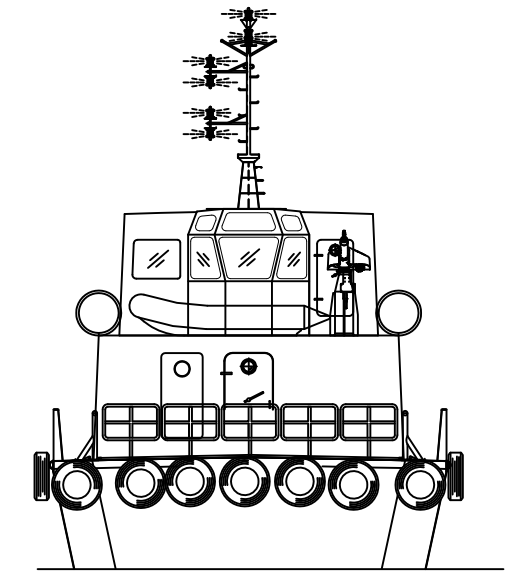
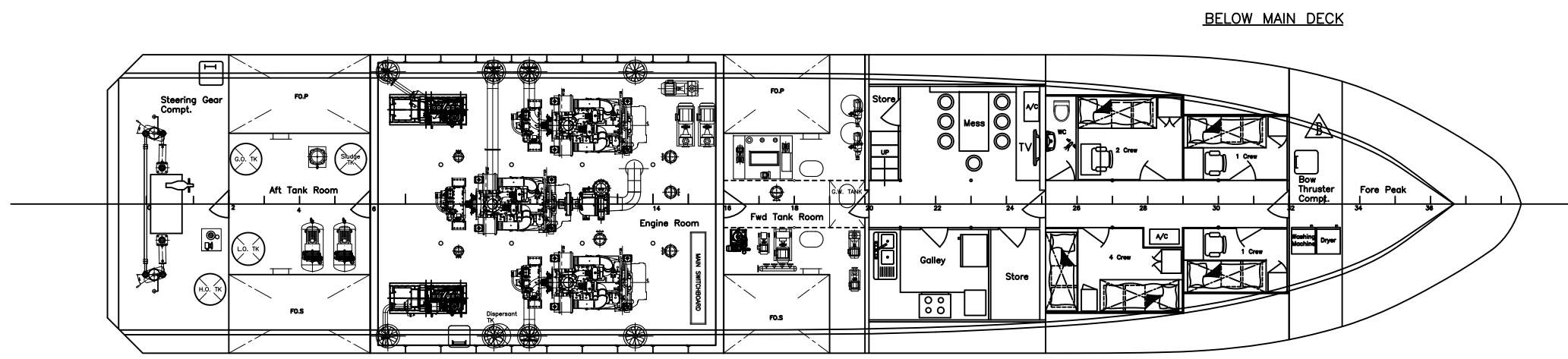
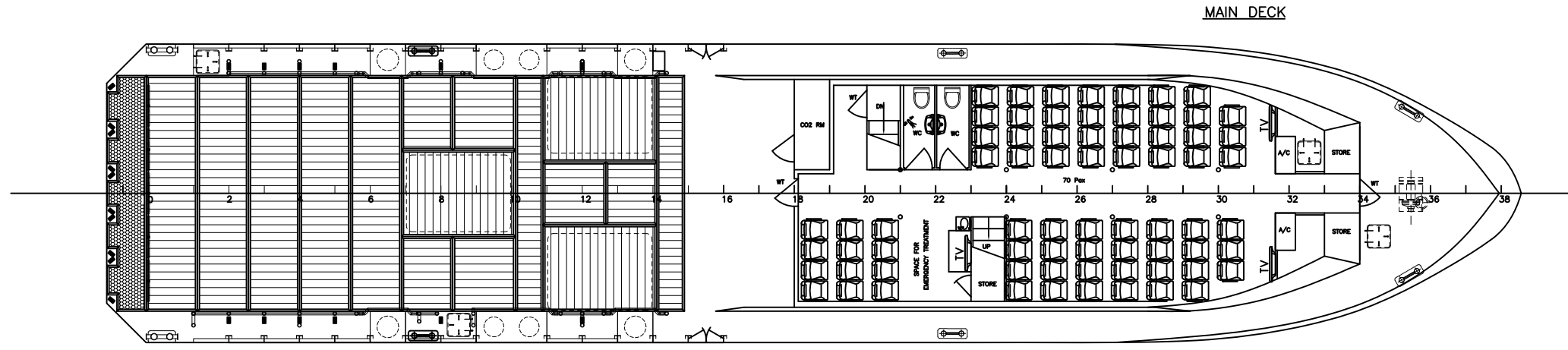
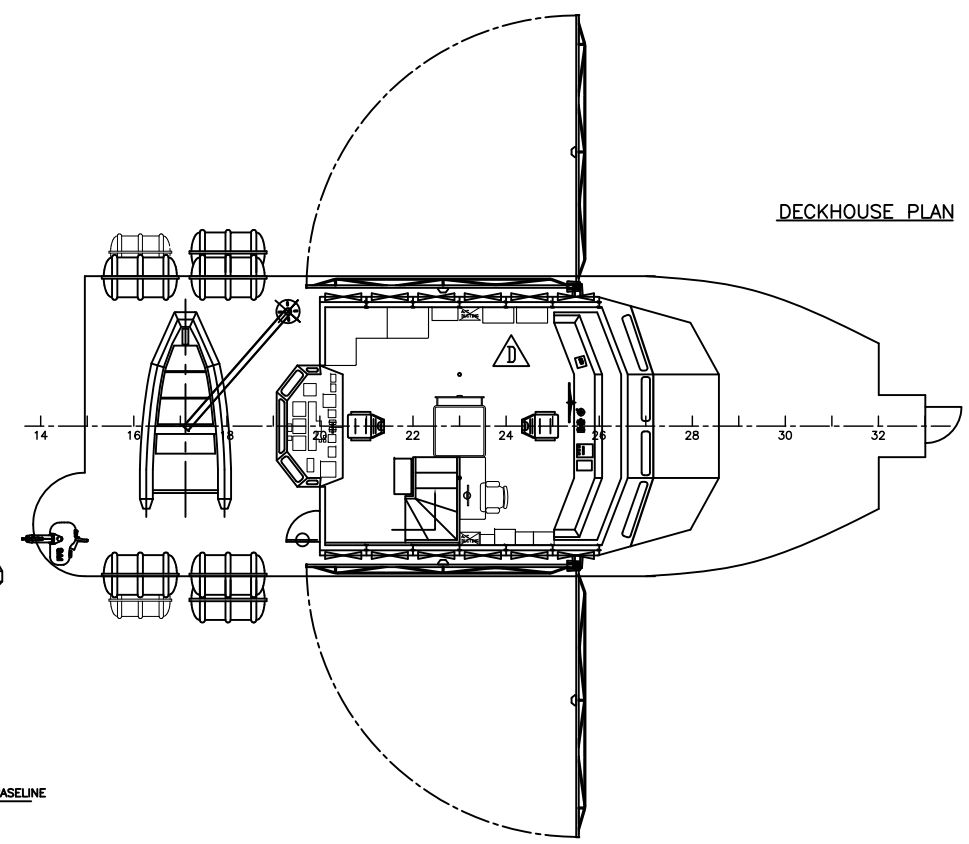
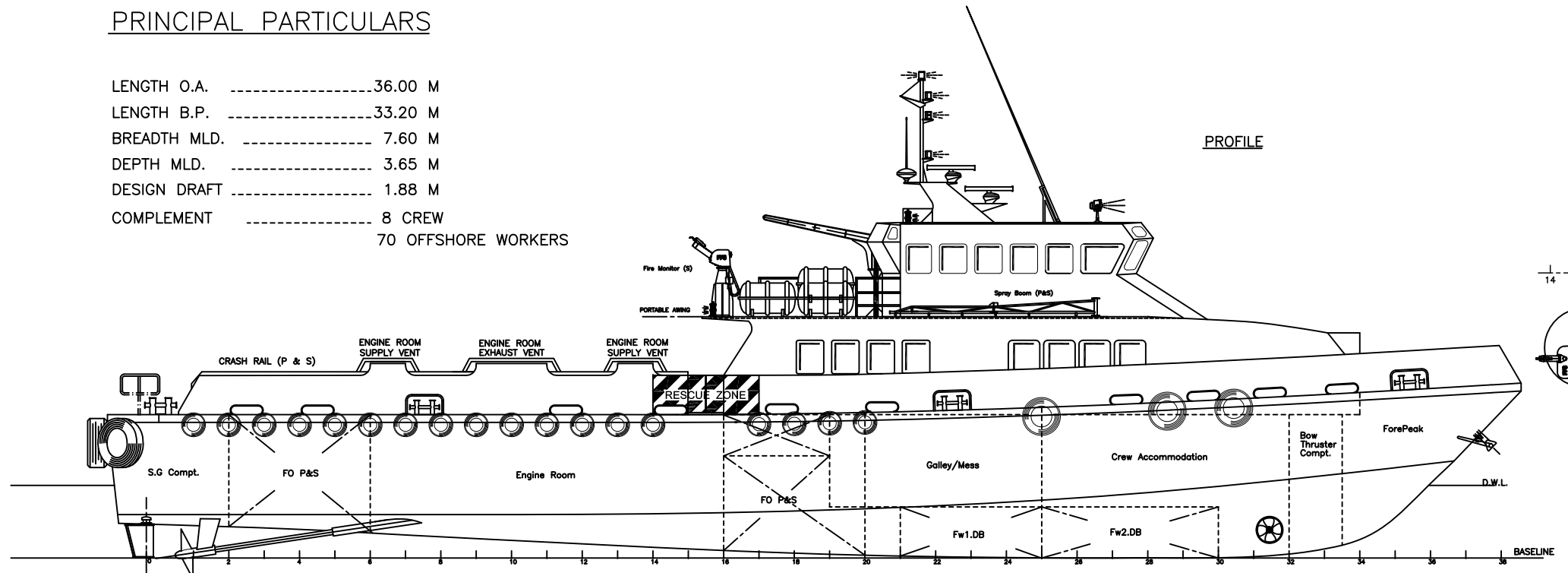


# PRINCIPAL PARTICULARS

- LENGTH O.A. -----36.00 M
- LENGTH B.P. -----33.20 M
- BREADTH MLD. ----- 7.60 M
- DEPTH MLD. ----- 3.65 M
- DESIGN DRAFT ----- 1.88 M
- COMPLEMENT ----- 8 CREW  
70 OFFSHORE WORKERS



D	update w/h layout	28,SEP,2010	ZH	YARD comment
C	revised as shown	10,JUL,2010	ZH	YARD comment
B	indicate the second escape of crew accommodation	13,JAN,2009	ZH	ABS comment
Rev No	Modification	Date	Done	Remark

PROJECT: 36M CREW BOAT (H161)

TITLE: GENERAL ARRANGEMENT

**PENGUIN SHIPYARD INTERNATIONAL PTE LTD**  
 18 Tuas Basin Link, Singapore 638784 Tel: 68628322 Fax: 68622150

DRAWN: ZH	DATE: 13,AUG,2008	SCALE: 1:75
CHECKED: BWB	DATE:	REVISION: D
DRAWING No.: PBIL-H162-G-01		SHEET: 1 OF 1