



UNIWIS OFFSHORE  
UNIWIS TOWAGE



## UNIEXPRESS 26

Fast Crewboat / Utility Vessel

### GENERAL

Year Built	2015
Classification	Bureau Veritas
Notation	I X HULL X MACH, Crewboat Sea Area 3 (max. sig. wave ht. 3m)
Flag	Panama
Official No	TBA
IMO Number	TBA
Call Sign	TBA
GRT/NRT	266/88

### DIMENSIONS

Length Overall	40.00 m
Breadth Moulded	7.60 m
Depth Moulded	3.65 m
Draft Loaded (max)	1.90 m approx.

### PERFORMANCE

Maximum Speed	28 knots at 100% MCR @ 35MT DWT
Cruising Speed	26 knots at 85% MCR @ 35MT DWT

### CARGO CAPACITIES

Clear Deck Area	100 m <sup>2</sup>
Deck Cargo / Deck Strength	60T / 2.0 MT/m <sup>2</sup>
Fuel Oil	68 m <sup>3</sup>
Fresh Water	32 m <sup>3</sup>

### PROPULSION SYSTEM

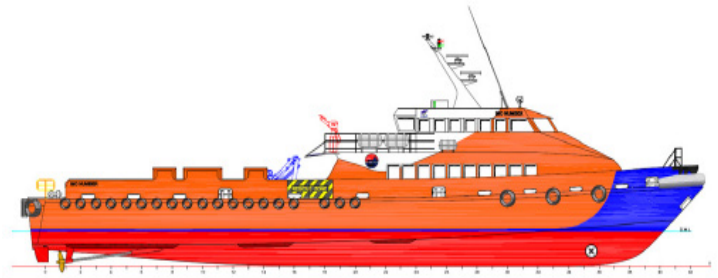
Main Engines	2 x 1,350 BHP & 1 x 1800 BHP @ 1900 RPM - Cummins KTA38M2 & KTA50M2 (IMO Tier II)
Main Generators	3 x 90kw @ 1500 rpm Cummins - Stamford CSMXT8.3 - UCM274E ; 415V/3Ph/50Hz
Portable Generator	1 x Denko KDE3300
Propellers	3 x Fixed pitch, 5 blades
Bow Thruster	1 x Electro hydraulic @ 100 kW

### DECK EQUIPMENT

Deck Crane	1 x Palfinger PK4501 (0.5T @ 6m)
------------	----------------------------------

### ACCOMMODATION

Passenger Seats	100
Cabins	2 x 1 berth 4 x 2 berths
Total	10 Berths



### NAVIGATIONAL AND COMMUNICATION EQUIPMENT

SSB Radio (Non-GMDSS)	1 x ICOM IC-M710
GMDSS (Inmarsat C)	1 x Sailor 6110
VHF	2 x Sailor 6222
MF/HF	1 x Sailor 6310
Satellite Telephone / Fax	1 x FBB 150
Radar	2 x Simrad TX06S
Echo Sounder	1 x JMC F-2000
Gyro Compass	1 x Simrad RGC50
Magnetic Compass	1 x Lillie & Gillie MK2000S
Auto Pilot	1 x Simrad AP60
Radar Transponder (SART)	2 x 9GHz Sailor Sart II
Navtex Receiver	1 x Sailor 6391
GPS	1 x Furuno GP-32
AIS	1 x Sailor 6280
EPIRB	1 x Sailor SE406 II
Portable VHF radio	3 sets (I.S) Entel HT544

### FIRE-FIGHTING/ANTI-POLLUTION EQUIPMENT

<b>EXTERNAL</b>	
Fifi System	Equivalent to 1/4 FiFi system c/w water spray
Fire Pump	1 x 600m <sup>3</sup> /hr @ 130m head; SFP 250x350XP
Fifi Monitor - (Water)	1 x 600m <sup>3</sup> /hr @ 100m head FFS600LB
Oil Dispersant System	1 V-jet Nozzles (P & S) / 200 lts dispersant tank
<b>INTERNAL</b>	
Emergency Fire Pump	1 x 30m <sup>3</sup> /hr @ 35m head - Matsuka/Yamar YDP20E
CO2 system in engine room	Tyco
Fire Detection & Alarm System in living spaces & engine room	

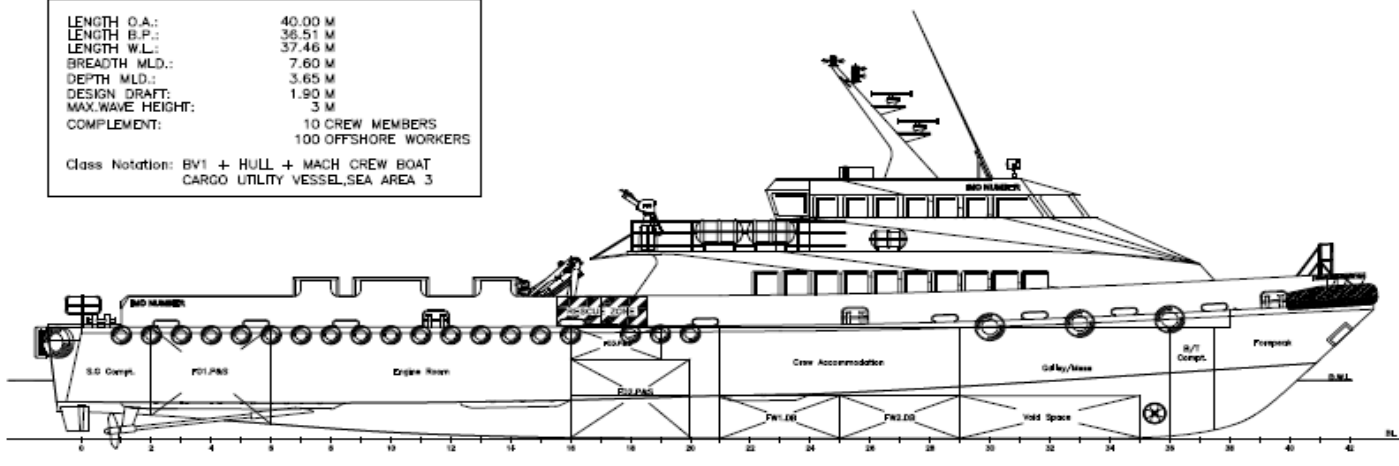
### LIFE SAVING EQUIPMENT

Life Rafts	5 x 25 man and 1 x 15 man each side, SOLAS approved
Rescue Boat	1 x inflatable type c/w 25HP outboard motor
Life Buoys	8 on board as per SOLAS
All other life saving appliances as per SOLAS requirements	

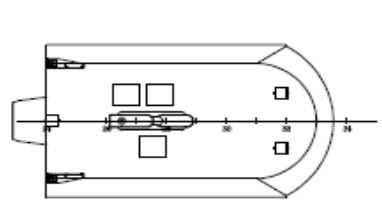
### MISCELLANEOUS

Dirty Oil Tank	0.8 cbm
Dispersant	0.2 cbm
Sewage Treatment Plant	1 x HYSTP-015 with capacity for 15 Pax
Oily Water Separator	1 x IMO approved with 15ppm alarm

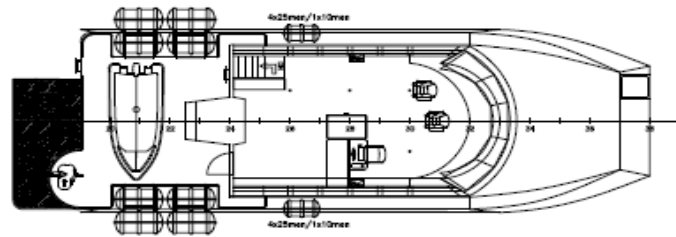
LENGTH O.A.: 40.00 M  
 LENGTH B.P.: 36.51 M  
 LENGTH W.L.: 37.46 M  
 BREADTH M.L.D.: 7.60 M  
 DEPTH M.L.D.: 3.65 M  
 DESIGN DRAFT: 1.90 M  
 MAX. WAVE HEIGHT: 3 M  
 COMPLEMENT: 10 CREW MEMBERS  
 100 OFFSHORE WORKERS  
 Class Notation: BV1 + HULL + MACH CREW BOAT  
 CARGO UTILITY VESSEL, SEA AREA 3



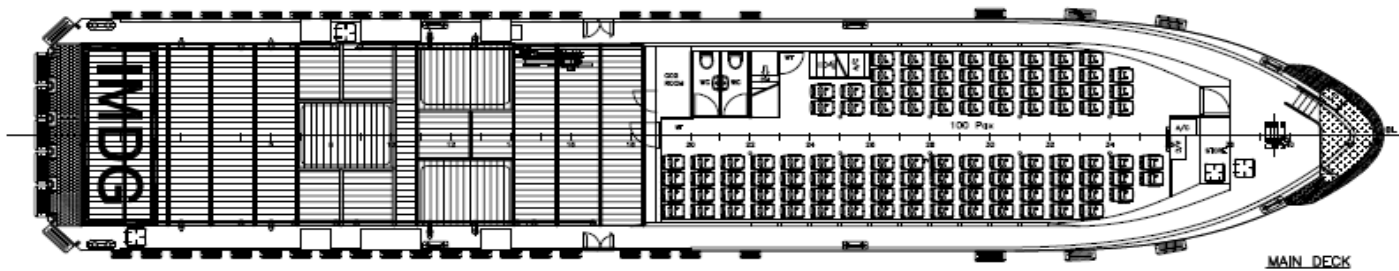
PROFILE



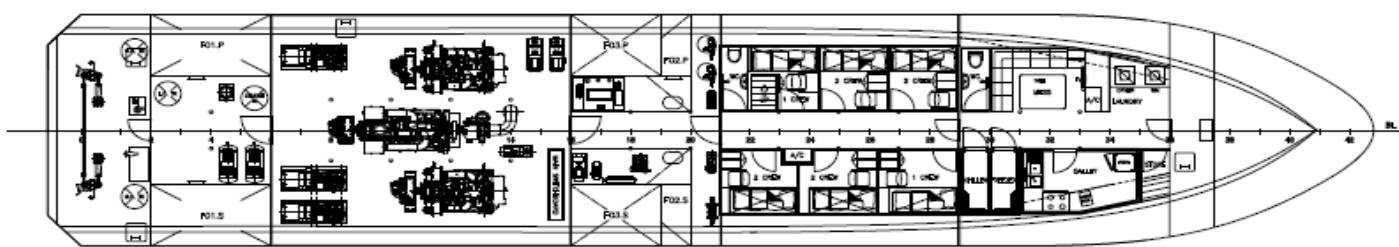
WHEELHOUSE TOP



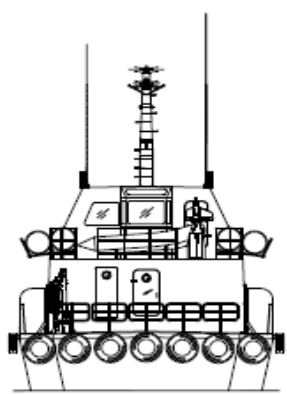
WHEELHOUSE PLAN



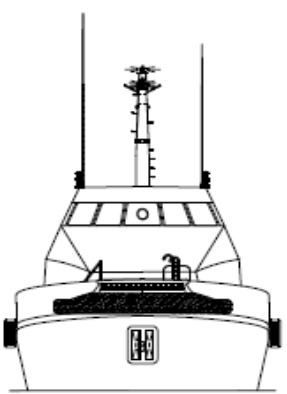
MAIN DECK



BELOW MAIN DECK



STERN VIEW



FRONT VIEW

PROJECT:	FLEX-405 (H255,260,261,263,264,265,268,276)		
TITLE:	GENERAL ARRANGEMENT		
	<b>PENGUIN SHIPYARD INTERNATIONAL PTE LTD</b> 18 Taya Street, Lark, Singapore 638794 Tel: 68626332 Fax: 68622150		
<small>This drawing and the information contained herein is supplied on the understanding that they are the exclusive property of Penguin Shipyard International Pte Ltd. They must not be used or reproduced in whole or in part, without permission in writing.</small>			
DRAWN:	STEPHEN	DATE:	27.MAR.2014
CHECKED:	YAW JH	DATE:	28.MAR.2014
APPROVED:	CHEW KH	DATE:	28.MAR.2014
DRAWING No.:	PSI-H255-G-01	SHEET:	1 OF 1