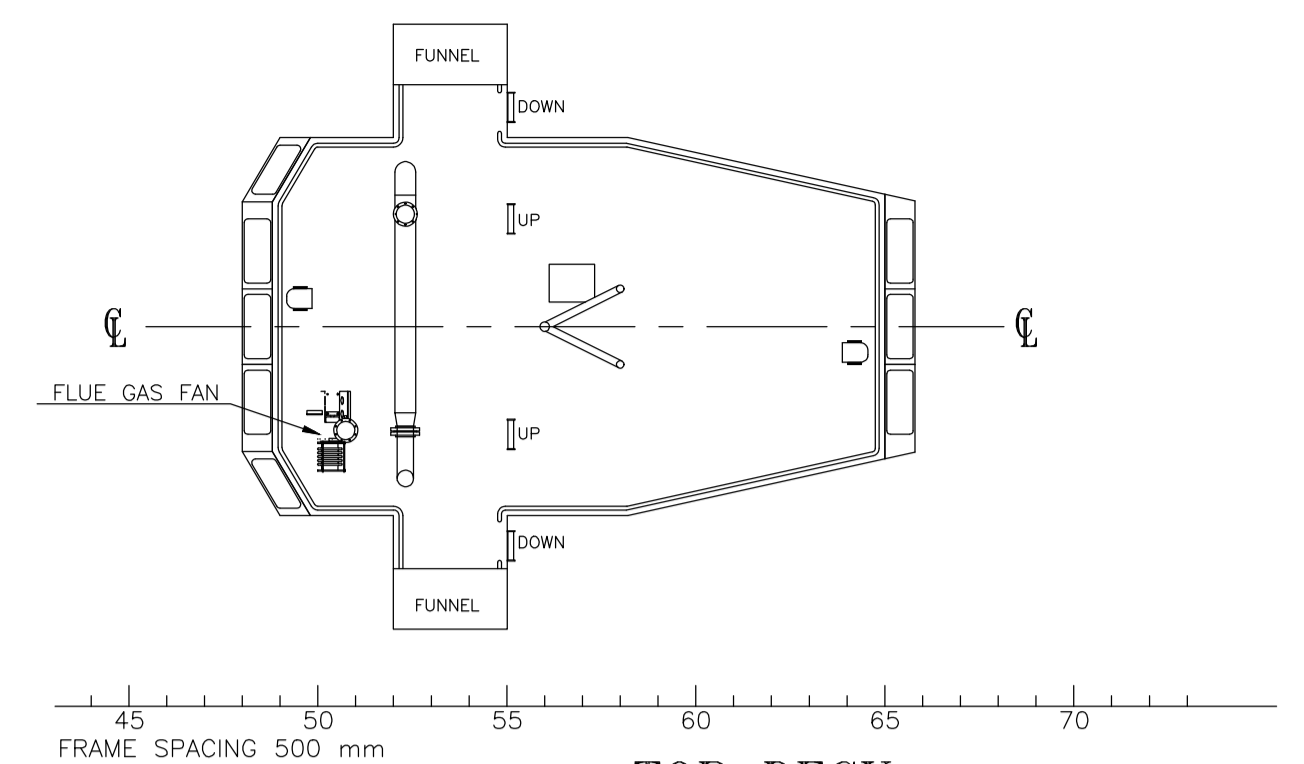
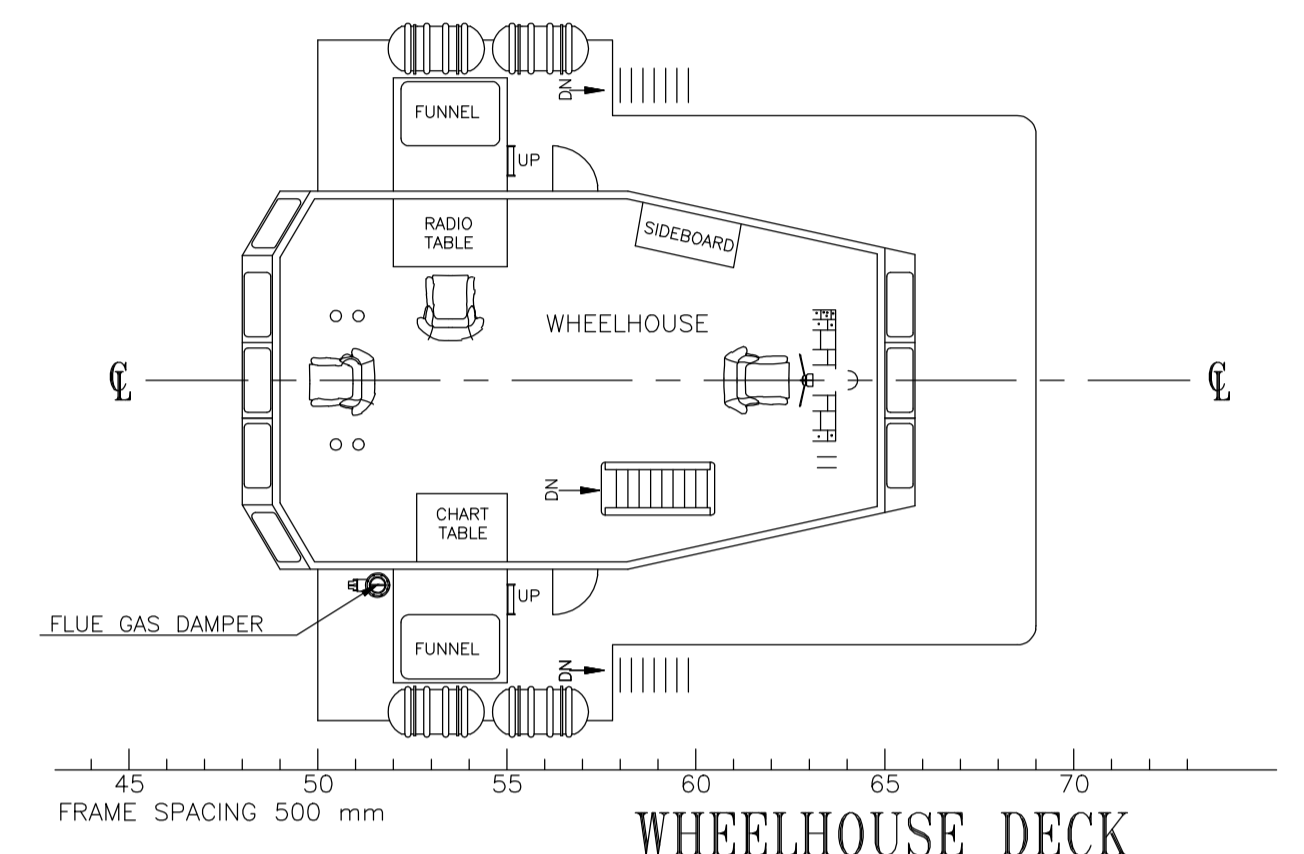


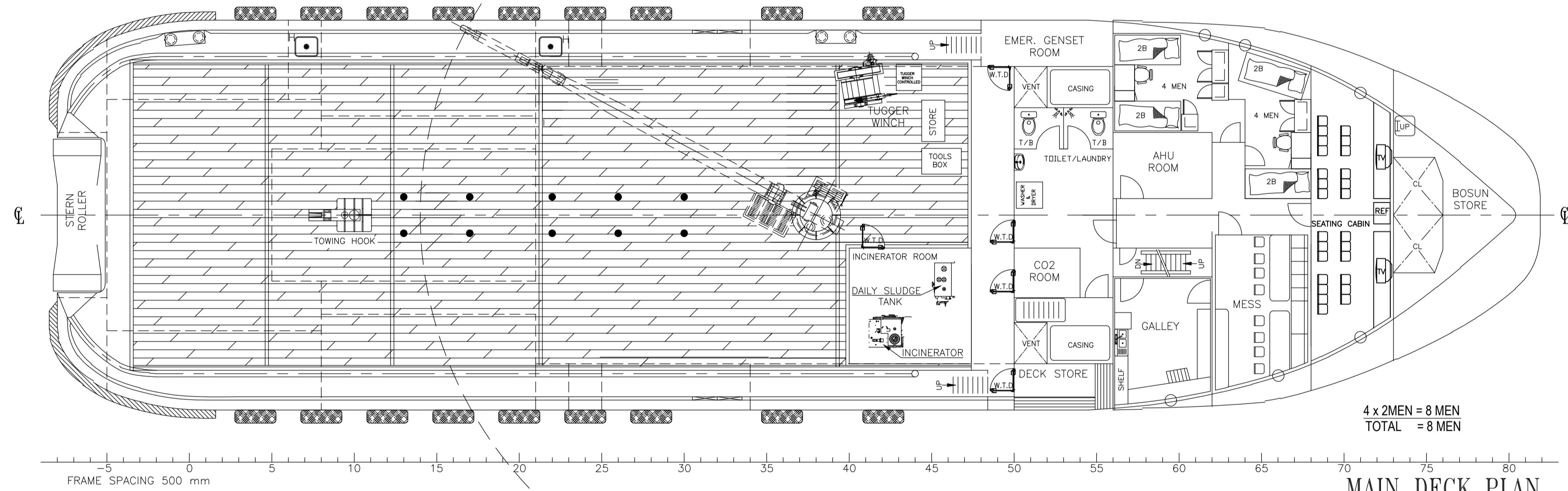
OUTBOARD PROFILE



TOP DECK

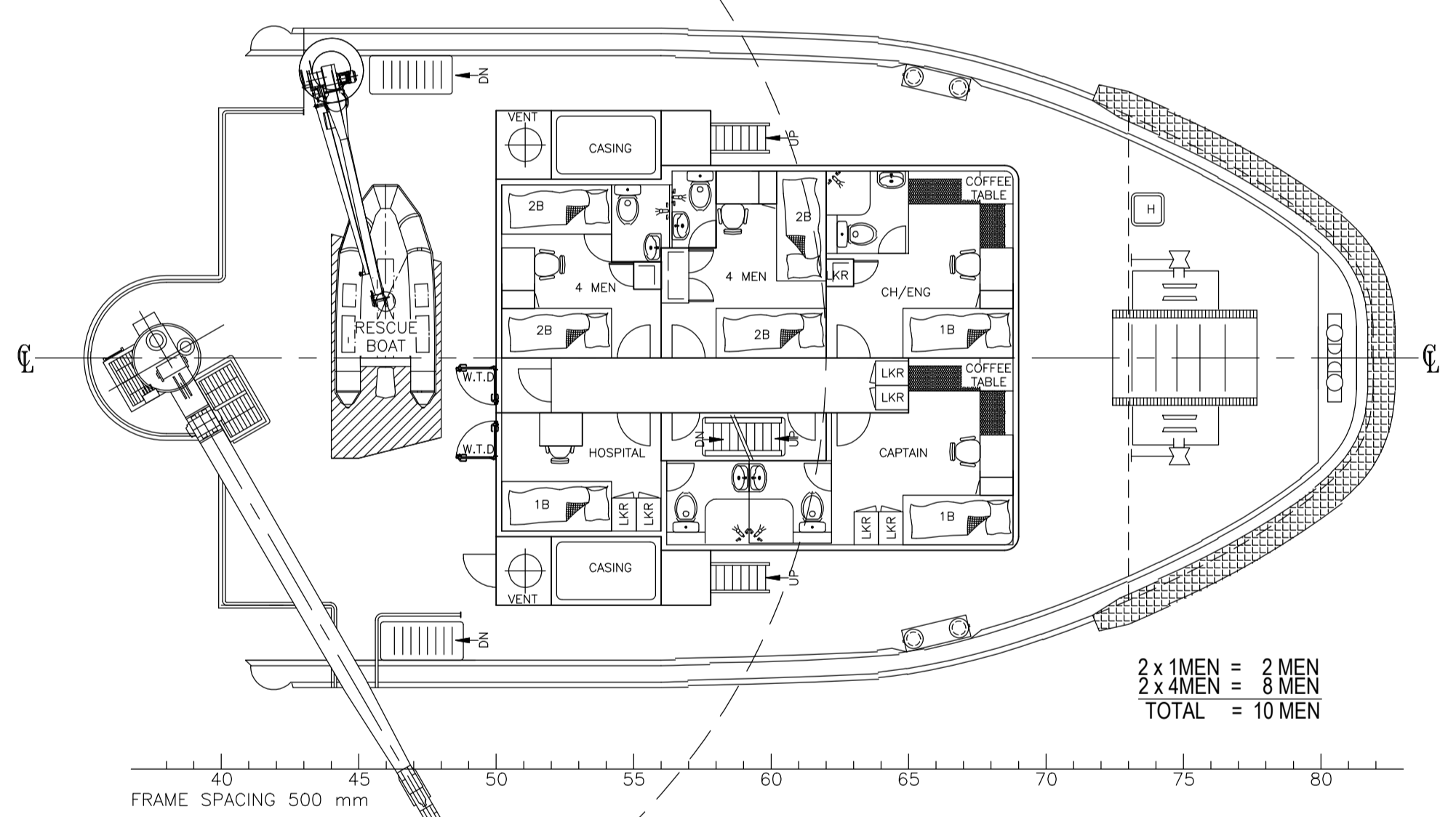


WHEELHOUSE DECK



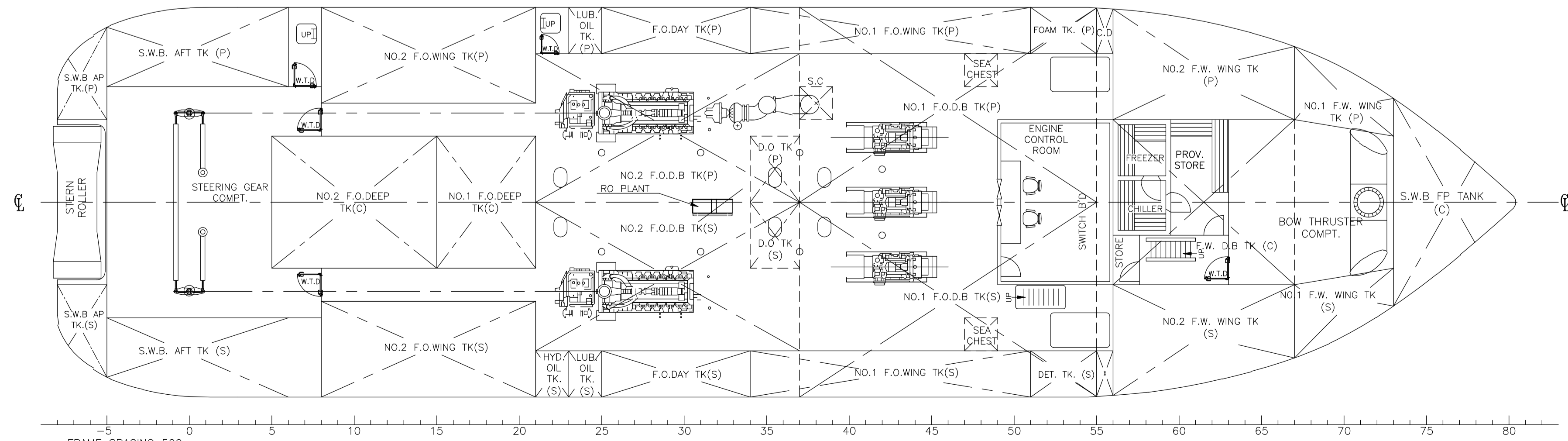
MAIN DECK PLAN

4 x 2MEN = 8 MEN  
TOTAL = 8 MEN



FORECASTLE DECK PLAN

2 x 1MEN = 2 MEN  
2 x 4MEN = 8 MEN  
TOTAL = 10 MEN



BELOW MAIN DECK

**PRINCIPAL DIMENSIONS**

LENGTH OVERALL	45.00 M
LENGTH WATERLINE	43.43 M
LENGTH B.P	39.40 M
BREADTH MOULDED	11.80 M
DEPTH MOULDED	4.60 M
DESIGN DRAFT MOULDED	3.80 M
COMPLEMENT	18 MEN
FUEL OIL	550 M3
FRESH WATER	160 M3
TOTAL POWER	3500 BHP
TRIAL SPEED	12 KNOTS

AS-BUILT AS PER OWNERS REQUEST	03	LJR/DCF	ET	20/JAN/2015
REVISE AS PER DESIGN PROGRESS	02	CHY	DS	11/JUL/2011
DESCRIPTION	REV	DRN BY	CHK BY	DATE
CLIENT: MICLYN EXPRESS OFFSHORE				
TITLE: GENERAL ARRANGEMENT PLAN				
SHIP NAME: SEISMIC SUPPORTER				
CONTRACT NO.	DRAWING NO. MEO-ENGG-SESP-001			
Drawn Office (Singapore):	DRAWN: LJR	REV/NO: 0	SCALE: 1:100	
No. 2 Harbour Road Floor #11-01/04 Harbour Point Tower 2 Singapore 079524	CHECKED: DCF	SHEET NO: 1 OF 1	SIZE: A1	
www.miclynexpressoffshore.com	APPROVED: EBEN TAN	DATE: 24-DEC-14		



This document contains Confidential Proprietary information and shall not be Copied, Reproduced, Used, Transferred to other Documents or Distributed to others for any purpose unless Authorized by MEO.