

MICLYN 258

Flat Top Deck Cargo Barge

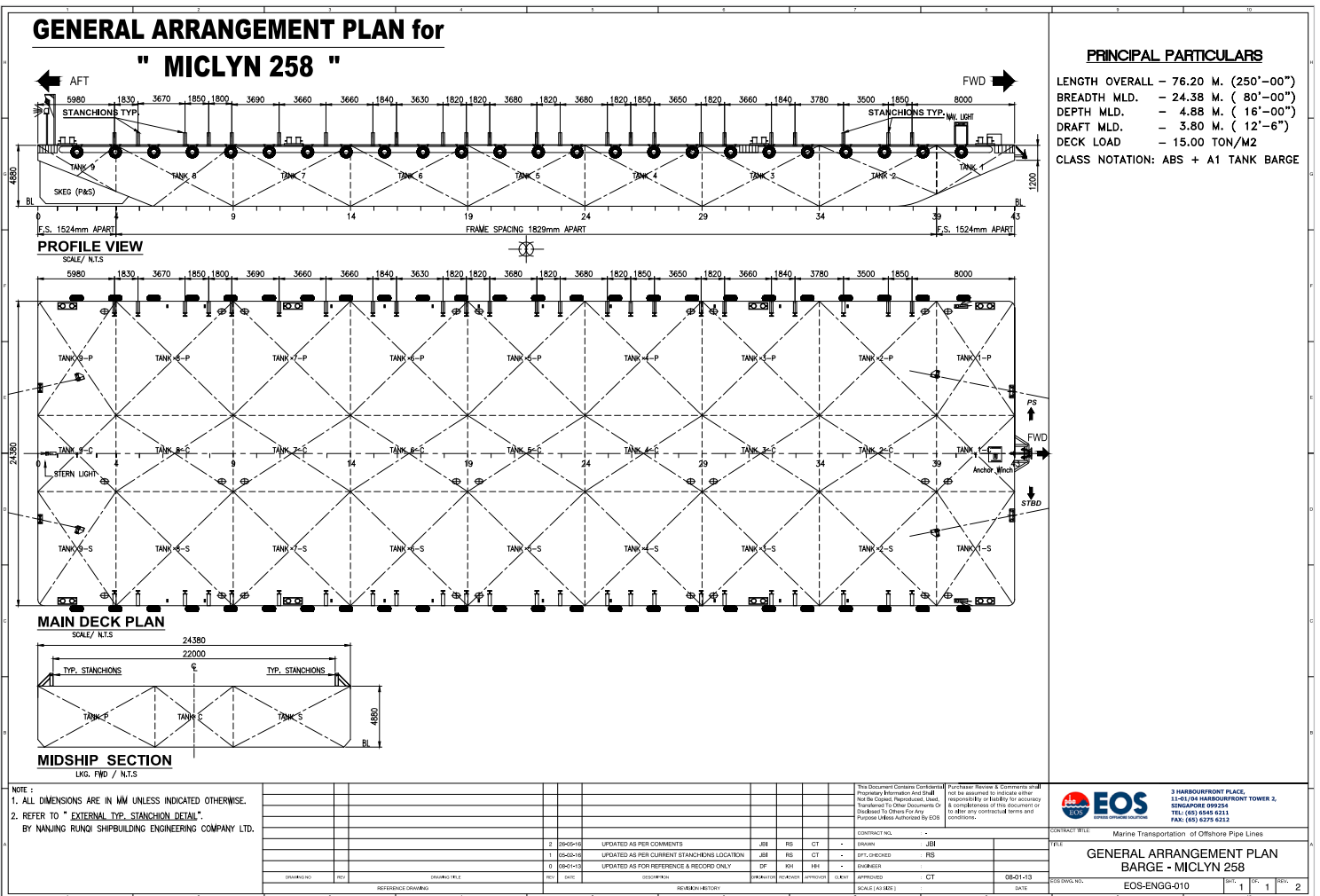
GENERAL

Year Built	2007
Flag / Port of Registry	Singapore / Singapore
Official Number	393893
Class / classification	Bureau Veritas
GRT / NRT	2,257 t / 677 t
Length Overall	250 ft (76.20 m)
Breadth	80 ft (24.38 m)
Depth Loaded	16 ft (4.88 m)
Draft Loaded	12.5 ft (3.81 m)
Dead Weight	5,300 tons (approx.)
Deck Loading	15 t / m ²
Transverse Bulkhead	Eight (8)
Longitudinal Bulkhead	Two (2)



DECK EQUIPMENT

Anchor Winch	1 x hand winch (200 m x 1" galvanized wire)
Anchor	1 x stockless bower anchor
Smit Brackets	4 x smit towing brackets - P&S, fwd and aft
Stanchions	24 stanchions (P&S)
Navigation Lights	1 set solar type, P&S at fwd and aft
Mooring Bollards	4 sets double mooring bollards each side (deck)
Other	Barge is all welded steel construction with flush Main Deck and Twin Skegs.



Particulars are believed to be correct but not guaranteed. Owners reserve the rights to amend the specifications without notifications. Particulars are entirely without warranty as to correctness and interested parties must inspect vessel's certificates, drawings or physical inspection of vessel.