

MICLYN 301

Flat Top Deck Cargo Barge

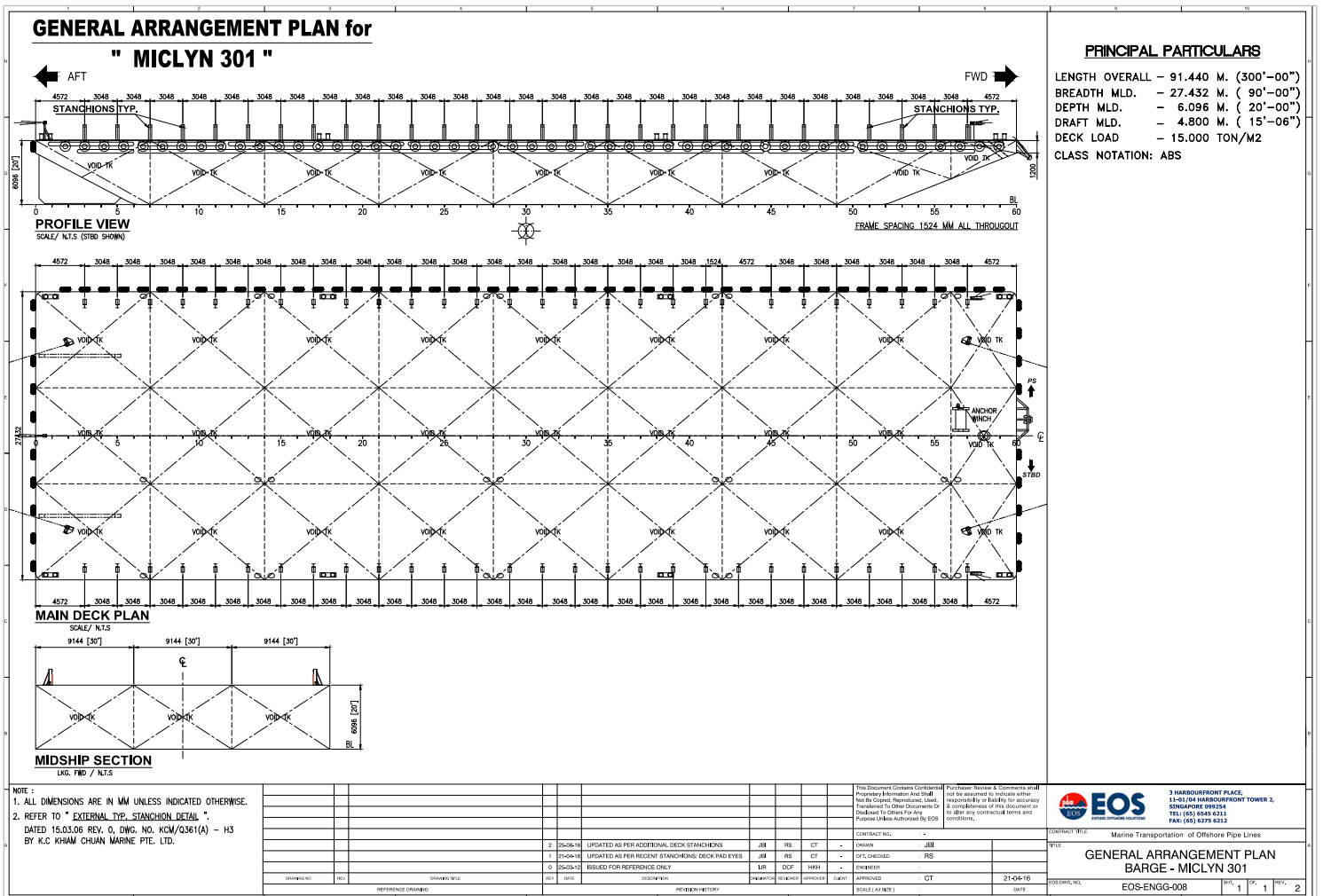
GENERAL

Year Built	2006
Flag / Port of Registry	Singapore / Singapore
Official Number	398257
Class / classification	Bureau Veritas
GRT / NRT	3,931 t / 1,179 t
Length Overall	300 ft (91.44 m)
Breadth	90 ft (27.43 m)
Depth Loaded	20 ft (6.09 m)
Draft Loaded	15.5 ft (4.80 m)
Dead Weight	8,900 t (approx.)
Deck Loading	15 t / m ²
Transverse Bulkhead	Eight (8)
Longitudinal Bulkhead	Two (2)



DECK EQUIPMENT

Anchor Winch	1 x hand operated emergency anchor winch
Anchor	1 x 2,100 kg stockless bower anchor
Anchor Wire	200 m x 37.5 mm galvanized wire rope
Smit Brackets	4 x smit towing brackets - P&S, fwd and aft
Stanchions	28 stanchions on each side
Navigation Lights	1 set solar type, P&S at fwd and aft
Mooring Bollards	4 sets double mooring bollards each side (deck)



Particulars are believed to be correct but not guaranteed. Owners reserve the rights to amend the specifications without notifications. Particulars are entirely without warranty as to correctness and interested parties must inspect vessel's certificates, drawings or physical inspection of vessel.