



EXPRESS 52

Crewboat/ Utility Vessel

PRINCIPAL PARTICULARS

Year Built	1991
Place Built	Aluminum Boats Inc., USA
Design	Seakraft Design Services
Flag	Indonesia
Length Overall	36.60 m
Length BP	32.00 m
Breadth Moulded	7.78 m
Depth Moulded	3.61 m
Draft (max)	2.16 m
Freeboard (SLL)	17.62 m
Class	BV
Notation	I, HULL, MACH, Special Service, Cargo Utility Vessel, Unrestricted Navigation
GRT/ NRT	216.00 T / 65.00 T
Deadweight	Nil

DECK PARTICULARS

Clear Deck Area	125.00 m ²
Deck Carrying Load	48.00 T
Deck Strength	1.00 T/m ²

PERFORMANCE

Maximum Speed	16 Knots @ 7.8 T/24 hrs
Economic Speed	14 Knots @ 7 T/24 hrs

PROPULSION SYSTEM

Main Engines	4 x Detroit Diesel 12V71, 510 BHP, 380 kW @ 2100 RPM, Total 2040 BHP
Auxiliary Engines	2 x Detroit Diesel 3.71, 20 kW @ 1500 RPM
Portable Generator	Nil
Emergency Generator	Nil
Propellers	4 x Fixed Pitch Propellers
Steering Gear System	2 Units
Rudder	2 Units

TANK CAPACITIES

Fuel Oil	52.00 m ³
Fresh Water	19.00 m ³

CARGO DISCHARGE CAPACITIES

Fuel Oil Pump	Powerry Pump, 7.5 HP @ 60 Hz
Fresh Water Pump	Baldor .50 HP @ 60 Hz 115/230V, 3450 RPM
Bilge	Powerry Pump, 7.5 HP, 60 Hz

DECK EQUIPMENT

Anchor Windlass c/w Bow	Electric Capstan
-------------------------	------------------



ACCOMMODATION

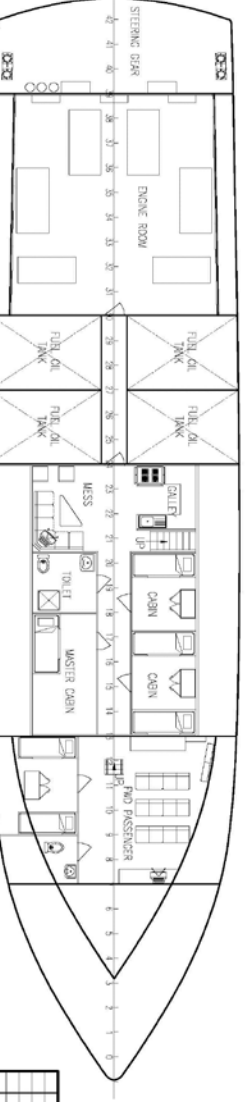
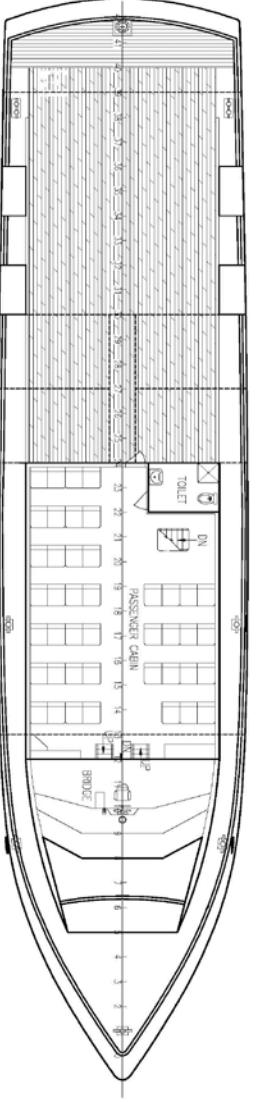
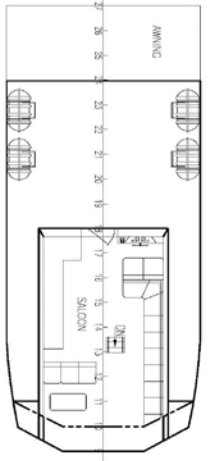
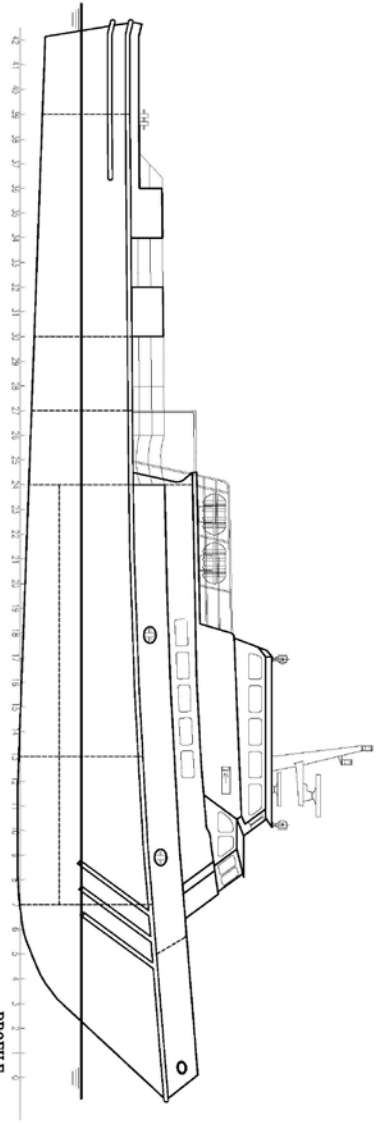
Passenger Seats	60
Crew	1 x 4, 1 x 4, 2 x 1 = 10

INTERNAL FIRE-FIGHTING & ANTI-POLLUTION EQUIPMENT

Emergency Fire Pump	SOLAS Compliant
CO2 Fi-Fi System	SOLAS Compliant
Fire Detection & Alarm	Fixed CO2 System for Engine Room

LIFE-SAVING EQUIPMENT

Life Rafts	6 x 25 men, SOLAS Compliant
------------	-----------------------------



PRINCIPAL PARTICULARS
 LENGTH O.A. 36.60M
 LENGTH B.P. 32.00M
 BREADTH M.D. 7.79M
 DEPTH M.D. 3.61M
 DESIGN DRAFT 1.89M

Project:	EXPRESS 52
Title:	GENERAL ARRANGEMENT
Designer:	SEARABBIT Design Services
Client:	MECLYN EXPRESS OFFSHORE
Date:	17/06
Scale:	AS SHOWN
Drawn:	JOHN
Checked:	KEVIN
Scale:	1:100 (A2)

