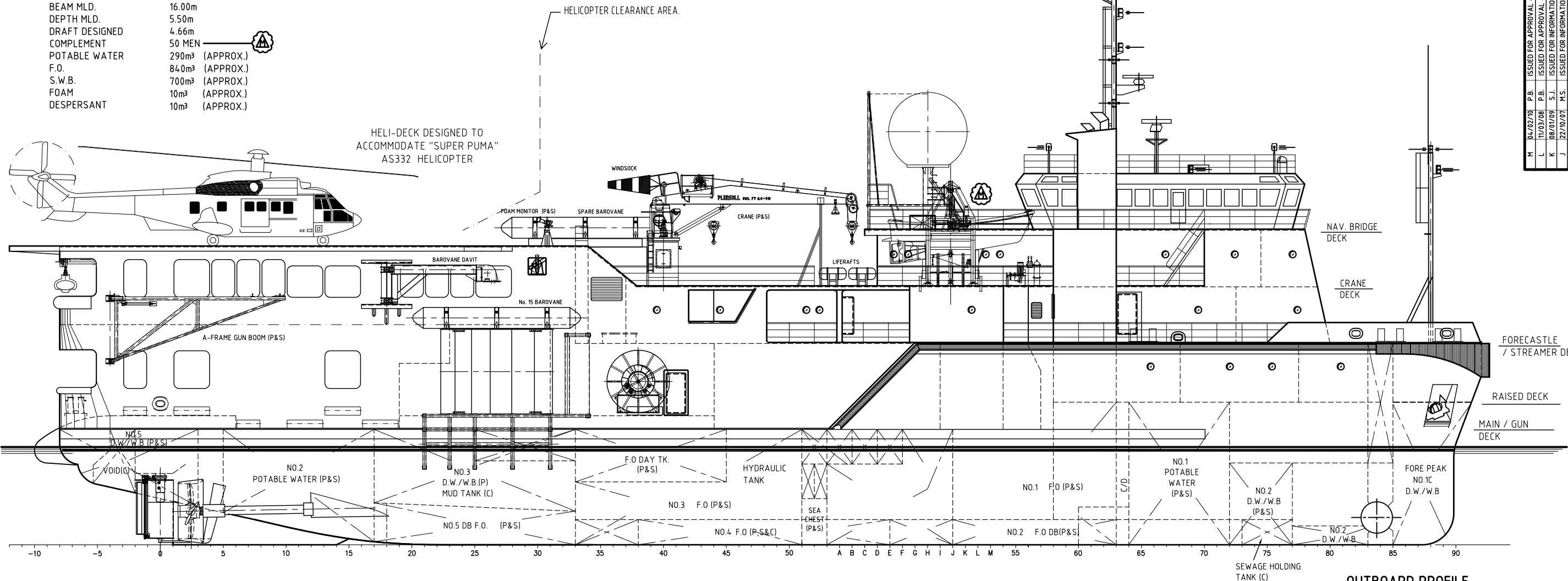


CENTRELINE PROFILE

PRINCIPAL PARTICULARS

LENGTH O.A.	67.80m
LENGTH W.L.	66.50m
BEAM MLD.	16.00m
DEPTH MLD.	5.50m
DRAFT DESIGNED	4.66m
COMPLEMENT	50 MEN
POTABLE WATER	290m ³ (APPROX.)
F.O.	84.0m ³ (APPROX.)
S.W.B.	700m ³ (APPROX.)
FOAM	10m ³ (APPROX.)
DESPERSANT	10m ³ (APPROX.)



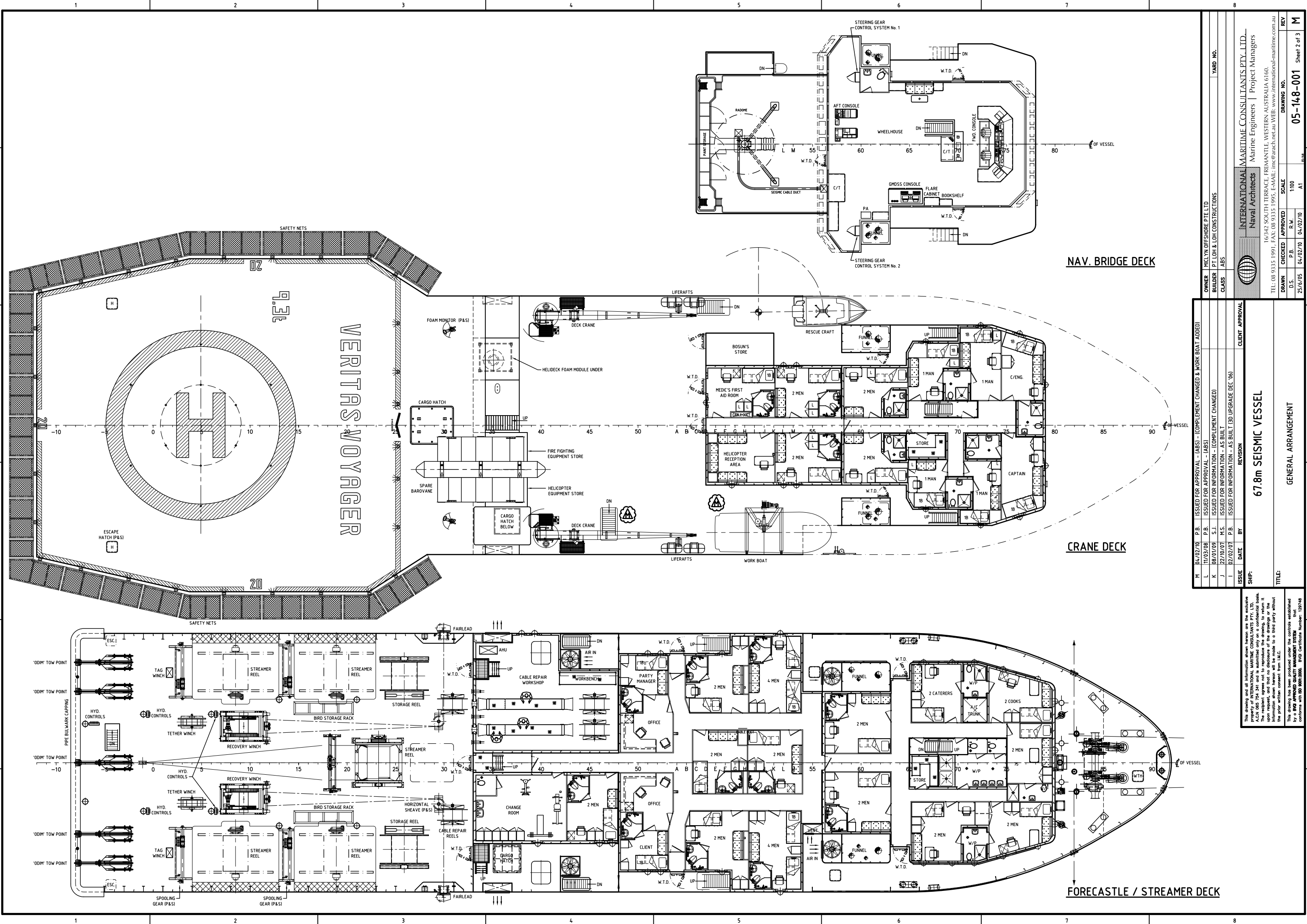
OUTBOARD PROFILE

OWNER	MICLYN OFFSHORE PTE LTD
BUILDER	PT LOH & LOH CONSTRUCTIONS
CLASS	ABS
YARD NO.	
INTERNATIONAL MARITIME CONSULTANTS PTY. LTD.	Marine Engineers Project Managers
Naval Architects	
16/342 SOUTH TERRACE, FREMANTLE, WESTERN AUSTRALIA 6160.	
TEL: 08 9335 1991, FAX: 08 9335 1995, E-MAIL: imc@arach.net.au WEB: www.international-maritime.com.au	
DRAWN	D.S.
CHECKED	P.B.
APPROVED	R.W.
SCALE	1:100
DRAWING NO.	05-148-001
SHEET NO.	Sheet 1 of 3
REV	M

M	04/02/10	P.B.	ISSUED FOR APPROVAL - (ASB) - (COMPLEMENT CHANGED & WORK BOAT ADDED)
L	11/03/08	P.B.	ISSUED FOR APPROVAL - (IASB)
K	08/01/09	S.J.	ISSUED FOR INFORMATION - (COMPLEMENT CHANGED)
J	22/10/07	M.S.	ISSUED FOR INFORMATION - AS BUILT
I	02/02/07	P.B.	ISSUED FOR INFORMATION - AS BUILT (30 UPGRADE DEC '06)
ISSUE	DATE	BY	REVISION
CLIENT APPROVAL			
SHIP:			
TITLE:			
67.8m SEISMIC VESSEL			
GENERAL ARRANGEMENT			

This drawing and all information herein are the exclusive property of INTERNATIONAL MARITIME CONSULTANTS PTY. LTD. and is submitted only on a confidential basis. It is not to be used, copied, reproduced, or otherwise disseminated without the prior written consent of the project manager. The information shown herein will be made to a third party without the prior written consent from I.M.C.

This drawing has been produced under the controls established by a BVQI APPROVED QUALITY MANAGEMENT SYSTEM that conforms with ISO 9001:2000. BVQI Certificate Number: 129748



OWNER	MICLYN OFFSHORE PTE LTD
BUILDER	PT LOH & LOH CONSTRUCTIONS
CLASS	ABS
YARD NO.	
DRAWN	25/6/05
CHECKED	04/02/10
APPROVED	04/02/10
SCALE	1:100
R.W.	AT
DRAWING NO.	05-148-001
REV	Sheet 2 of 3

ISSUE	DATE	BY	REVISION	CLIENT APPROVAL
M	04/02/10	P.B.	ISSUED FOR APPROVAL - (ABS) - (COMPLEMENT CHANGED & WORK BOAT ADDED)	
L	11/03/08	P.B.	ISSUED FOR APPROVAL - (ABS)	
K	08/01/09	S.J.	ISSUED FOR INFORMATION - (COMPLEMENT CHANGED)	
J	22/10/07	M.S.	ISSUED FOR INFORMATION - AS BUILT	
I	02/02/07	P.B.	ISSUED FOR INFORMATION - AS BUILT (3D UPGRADE DEC '06)	

SHIP: 67.8m SEISMIC VESSEL

TITLE: GENERAL ARRANGEMENT

This drawing and all information herein are the exclusive property of INTERNATIONAL MARITIME CONSULTANTS PTY. LTD. ACN 055 754 341 and is submitted only on a confidential basis. It is not to be used, copied, reproduced, or otherwise disseminated without the prior written consent of the company or its agents. Information shown herein will be made to a third party without the prior written consent from I.M.C.

This drawing has been produced under the controls established by a BVQI APPROVED QUALITY MANAGEMENT SYSTEM that conforms with ISO 9001:2000. BVQI Certificate Number: 129746

INTERNATIONAL MARITIME CONSULTANTS PTY. LTD.
 Marine Engineers | Project Managers
 Naval Architects
 16/342 SOUTH TERRACE, FREMANTLE, WESTERN AUSTRALIA 6160.
 TEL: 08 9335 1991, FAX: 08 9335 1995, E-MAIL: imc@imc.net.au WEB: www.international-maritime.com.au

