



CERMAT

40M / 2100BHP / 2 Point Mooring Utility Support Vessel

PRINCIPAL PARTICULARS

Year Built	2009
Place Built	Guangzhou Panyu Lingshan Shipyard, China
Design	Cheoy Lee 40m Utility
Flag	Panama
Length Overall	40.62 m
Length BP	37.41 m
Breadth Moulded	9.80 m
Depth Moulded	3.70 m
Draft (max)	3.10 m
Freeboard (SLL)	0.60 m
Class	BV
Notation	I x Hull x Mach, Tug, Unrestricted Navigation
GRT/ NRT	468.00 T / 140.00 T
Deadweight	378.00 T
Bollard Pull	Nil

DECK PARTICULARS

Clear Deck Area	151.00 m ²
Deck Carrying Load	100.00 T
Deck Strength	3.50 T/m ²

PERFORMANCE

Maximum Speed	16 Knots @ 8 T/24 hrs
Economic Speed	12 Knots @ 7 T/24 hrs

PROPULSION SYSTEM

Main Engines	2 x Caterpillar 3508B, 1050 BHP, 783.3 kW @ 1600 RPM, Total 2100 BHP
Auxiliary Engines	3 x Caterpillar 3406 C, 260 kW @ 1500 RPM
Emergency Generator	1 x Yanmar YDP, 5.7 kW @ 3000 RPM
Bow Thruster	Tunnel HRP 3001TT, 3 T Thrust
Stern Thruster	Tunnel HRP 1001TT, 1 T Thrust
Propellers	2 x Fixed Pitch Propellers
Steering Gear System	2 x Electro-Hydraulic Pump Palmarine
Rudder	2 x Streamlined Spade Type

TANK CAPACITIES

Fuel Oil	233.70 m ³
Fresh Water	152.20 m ³
Bilge	2.40 m ³
Ballast Water	112.70 m ³

CARGO DISCHARGE CAPACITIES

Fuel Oil Pump	30 m ³ /hr @ 30 m head
Fresh Water Pump	35 m ³ /hr @ 35 m head
Bilge Pump	35 m ³ /hr @ 30 m head



DECK EQUIPMENT

Anchors & Chain	2 x 2 T Flipper Delta, 750m x 28 mm Wire Rope
Tugger Winch	Nil
Capstan	1 x UHC-5-U, Electric Hydraulic, 5 T Pull
Anchor Windlass c/w Bow	2 x Unitech UHM-12/40S, 12 T Pull
Crane	SWL 2 T @ 11.6 m Radius (max SWL)
Bow Winch	2 x Unitech UHM-12/40S, 12 T Pull

ACCOMMODATION

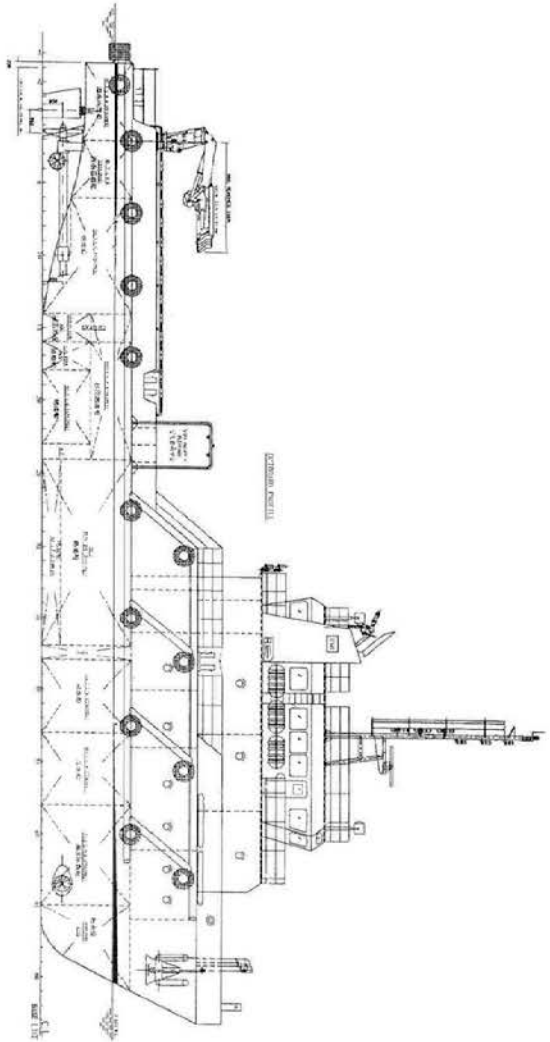
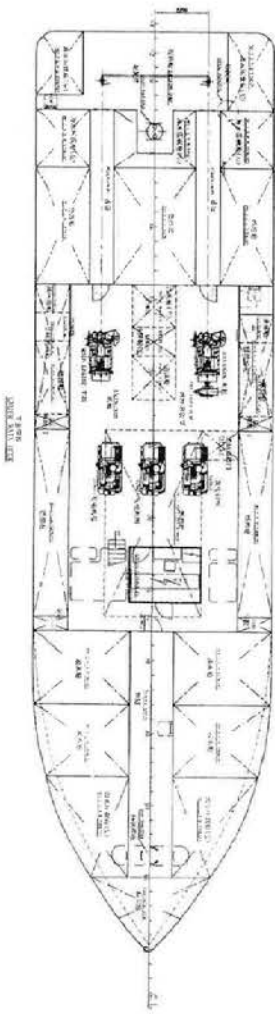
Berths	2 x 1, 1 x 2, 7 x 4 Berths
Total Pax	32

EXTERNAL FIRE-FIGHTING EQUIPMENT

Fi-Fi Notation	1/2 Fi-Fi
Fi-Fi Monitors	1 x Electric Control Monitor, 1200 m ³ /hr, 120 m Throw Length
Fi-Fi Pump	1 x Scampump SE-592 24, 1200 m ³ /hr

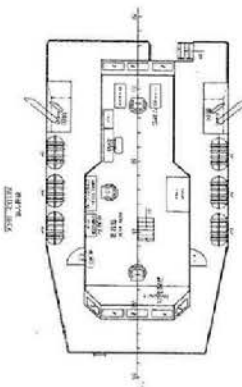
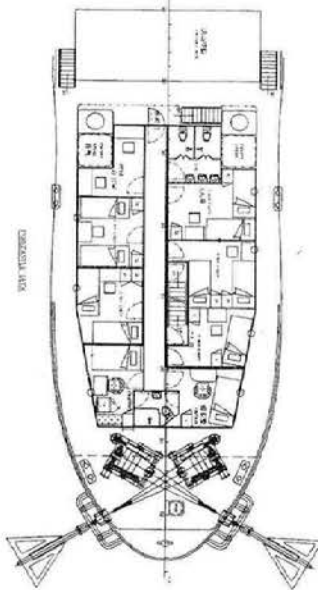
LIFE-SAVING EQUIPMENT

Life Rafts	6 x 20 Men, SOLAS Compliant
Rescue Boat c/w Davit	Nil



PRINCIPAL DIMENSIONS

LENGTH OVERALL	43.24
LENGTH BETWEEN PERMANENT LARKS	29.90
MAXIMUM BEAM	5.80
DEPTH AT KEEL	2.70
DEPTH AT DECK	2.74
DEPTH AT BULKHEAD	3.78
DEPTH AT BULKHEAD	22.00
DEPTH AT BULKHEAD	27.70
DEPTH AT BULKHEAD	151.50
DEPTH AT BULKHEAD	245.00
DEPTH AT BULKHEAD	12.00



40M UTILITY VESSEL		GENERAL ARRANGEMENT	
NAME	40M UTILITY VESSEL	CLASS	UTILITY VESSEL
TYPE	UTILITY VESSEL	REGISTRATION	UK
DESIGNER	CHEVY LEE SHIPYARDS LTD.	MANUFACTURER	CHEVY LEE SHIPYARDS LTD.
DATE	1:100	ISSUE	1:100
GENERAL ARRANGEMENT		GENERAL ARRANGEMENT	
1:100		1:100	
1:100		1:100	
1:100		1:100	