



Uniexpress 9

Fast Crewboat/ Utility Vessel



PRINCIPAL PARTICULARS

Year Built	2008
Place Built	Thailand
Design	Marsun Co. Ltd.
Flag	Thailand
Length Overall	36.00 m
Length BP	33.02 m
Breadth Moulded	7.60 m
Depth Moulded	3.30 m
Draft (max)	1.70 m
Freeboard (SLL)	1.61 m
Class	BV
Notation	I, + HULL, + MACH, Crewboat, Cargo Utility Vessel, Unrestricted Navigation
GRT/ NRT	205.00 T / 63.00 T
Deadweight	120.00 T

DECK PARTICULARS

Clear Deck Area	80 m ²
Deck Carrying Load	50.00 T
Deck Strength	2.00 T/m ²

PERFORMANCE

Maximum Speed	24 Knots @ 15 T/24 hrs @ 32 DWT
Economic Speed	18 Knots @ 9.2 T/24 hrs @ 32 DWT

PROPULSION SYSTEM

Main Engines	3 x Cummins KTA 38-M2, 1350 BHP, 969 kW @ 1950 RPM, Total 4050 BHP
Auxiliary Engines	2 x Cummins 6BT5-9 D(M), 90.4 kW @ 1500 RPM
Portable Generator	Nil
Bow Thruster	Nil
Propellers	3 x Nickel-Aluminium Bronze, Stone Marine
Steering Gear System	Hydraulic, 2.0 TM Tie Bar Steering System
Rudder	2 Units

TANK CAPACITIES

Fuel Oil	50.00 m ³
Fresh Water	20.00 m ³

CARGO DISCHARGE CAPACITIES

Fuel Oil Pump	Azque, BT-IL 52D3
Fresh Water Pump	Azcue CA-50-7 Ø 185, 20 m ³ /hr, 2900 RPM
Bilge	Azcue CA-50-7 Ø 185, 30 m ³ /hr, 2900 RPM

DECK EQUIPMENT

Anchor Windlass c/w Bow	Electro Hydraulic Winch c/w Wire Rope, Chain & Single Anchor
Crane	Nil

ACCOMMODATION

Passenger Seats	92
Crew	2 x 4, 2 x 1 = 10

EXTERNAL FIRE-FIGHTING EQUIPMENT

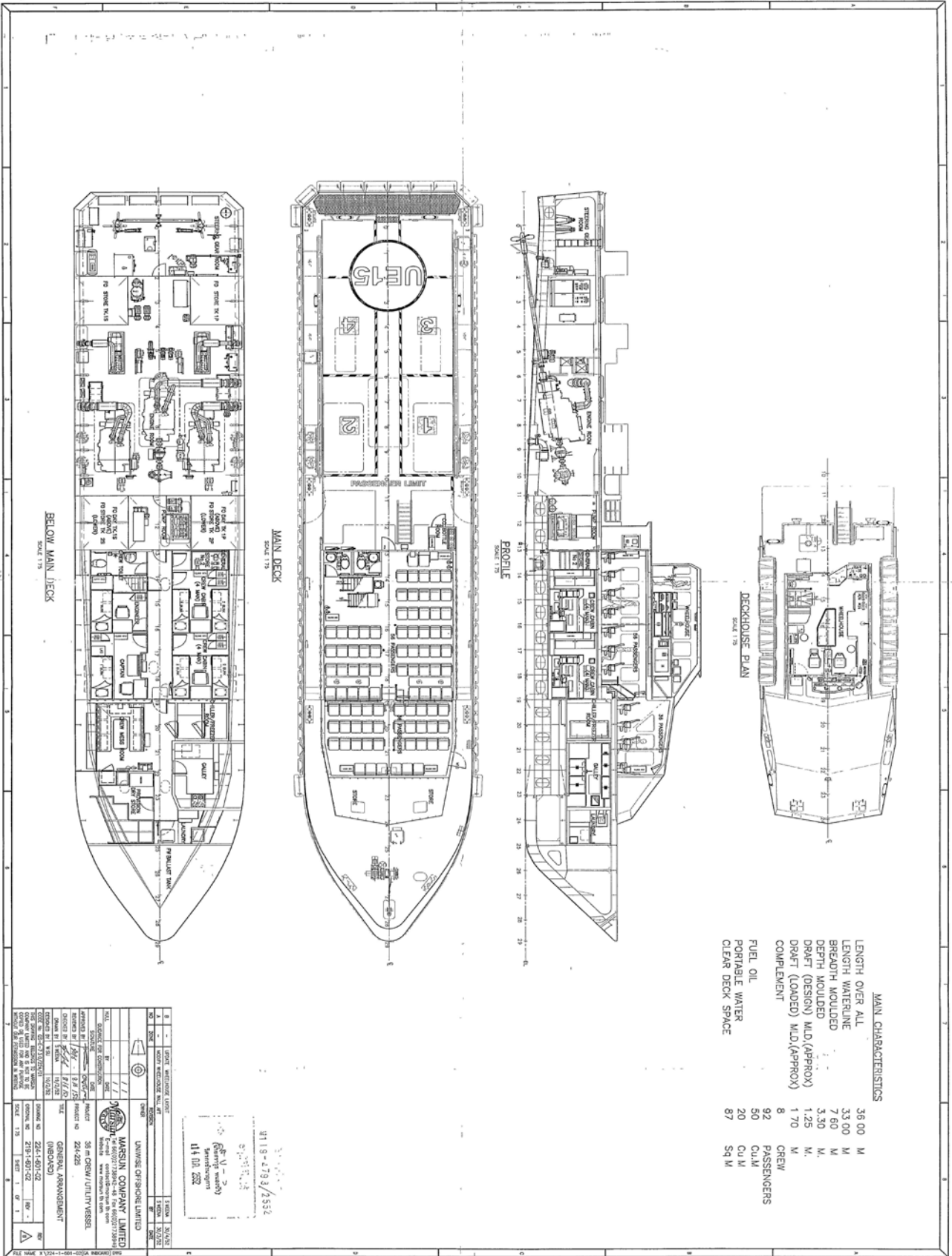
Fi-Fi Notation	ACP, 600 m ³ /h, 250DF
Fi-Fi Monitors	600 m ³ /hr, 100 m Throw Length
Fi-Fi Pump	600 m ³ /hr
Oil Dispersant System	Nil

INTERNAL FIRE-FIGHTING & ANTI-POLLUTION EQUIPMENT

Emergency Fire Pump	Lombardini
CO2 Fi-Fi System	Fixed CO2 System for Engine Room
Fire Detection & Alarm	Notifier AFP-200 Intelligent Fire Detection & Alarm System

LIFE-SAVING EQUIPMENT

Life Rafts	8 x 25 men, SOLAS Compliant
Rescue Boat c/w Davit	Nil



MAIN CHARACTERISTICS

LENGTH OVER ALL	36 00	M
LENGTH WATERLINE	33 00	M
BREADTH MOULDED	7 60	M
DEPTH MOULDED	3 30	M
DRAFT (DESIGN)	1 25	M
DRAFT (LOADED)	1 70	M
COMPLEMENT	8	CREW
FUEL OIL	92	PASSENGERS
PORTABLE WATER	50	CU M
CLEAR DECK SPACE	20	CU M
	87	Sq M

NO.	1	DATE	15/01/2016	REVISION	1
BY	AW	APPROVED BY	AW	DATE	15/01/2016
SCALE	1:1	PROJECT	UNISUB	CLIENT	UNISUB OFFSHORE LIMITED
DESIGNED FOR	CONSTRUCTION	PROJECT NO.	224-225	CLIENT NO.	224-225
DRAWN BY	AW	PROJECT	UNISUB	CLIENT	UNISUB OFFSHORE LIMITED
CHECKED BY	AW	PROJECT	UNISUB	CLIENT	UNISUB OFFSHORE LIMITED
GENERAL ARRANGEMENT					
SCALE	1:1				

UNISUB OFFSHORE LIMITED
 58 m CRIB / UTILITY VESSEL
 GENERAL ARRANGEMENT
 SCALE 1:1

UNISUB
 114 00 2022

9119-4793/7552

UNISUB/2016/15