



## EXPRESS 64

Fast Utility Craft/ Crewboat

### PRINCIPAL PARTICULARS

Year Built	2011
Place Built	Singapore
Design	Penguin
Flag	Panama
Length Overall	36.00 m
Length BP	33.20 m
Breadth Moulded	7.60 m
Depth Moulded	3.65 m
Draft (max)	1.85 m
Freeboard (SLL)	1507 mm
Class	BV
Notation	I, HULL MACH, Crewboat, Cargo Utility Vessel, Unrestricted Navigation, Max Sig. Wave Height 3m
GRT/ NRT	236.00 T / 71.00 T
Deadweight	114.00 T

### DECK PARTICULARS

Clear Deck Area	80.00 m <sup>2</sup>
Deck Carrying Load	40.00 T
Deck Strength	2.00 T/m <sup>2</sup>

### PERFORMANCE

Maximum Speed	22 Knots @ 20 T DWT
Economic Speed	18 Knots @ 20 T DWT

### PROPULSION SYSTEM

Main Engines	3 x Cummins KTA38-M2, 1350 BHP, 2982 kW @ 1900 RPM, Total 4050 BHP
Auxiliary Engines	2 x Cummins 6BT 5.9 Dm Diesel, 80 kW @ 415/220 V/ 3phase/50Hz
Portable Generator	Nil
Bow Thruster	Scandia, S60-80-ALU @ 75-90 BHP, 0.6 T Thrust
Propellers	3 x Fixed Pitch Propellers, 5-Blade
Steering Gear System	2 x Duplex Electro Hydraulic Pump System
Rudder	2 Units

### TANK CAPACITIES

Fuel Oil	56.00 m <sup>3</sup>
Fresh Water	30 m <sup>3</sup> /hr

### CARGO DISCHARGE CAPACITIES

Fuel Oil Pump	30 m <sup>3</sup> /hr
Fresh Water Pump	30 m <sup>3</sup> /hr
Bilge	50 m <sup>3</sup> /hr, AzcueCA 80/10A

### DECK EQUIPMENT

Anchor Windlass c/w Bow	Hypac, HHAW15-32
-------------------------	------------------



### ACCOMMODATION

Passenger Seats	Nil
Crew	2 x 1, 2 x 2, 3 x 4 = 18

### EXTERNAL FIRE-FIGHTING EQUIPMENT

Fi-Fi Notation	Equivalent to 1/4 Fi-Fi
Fi-Fi Monitors	600 m <sup>3</sup> /hr, < 110 m Throw Length
Fi-Fi Pump	600 m <sup>3</sup> /hr
Oil Dispersant System	Nil

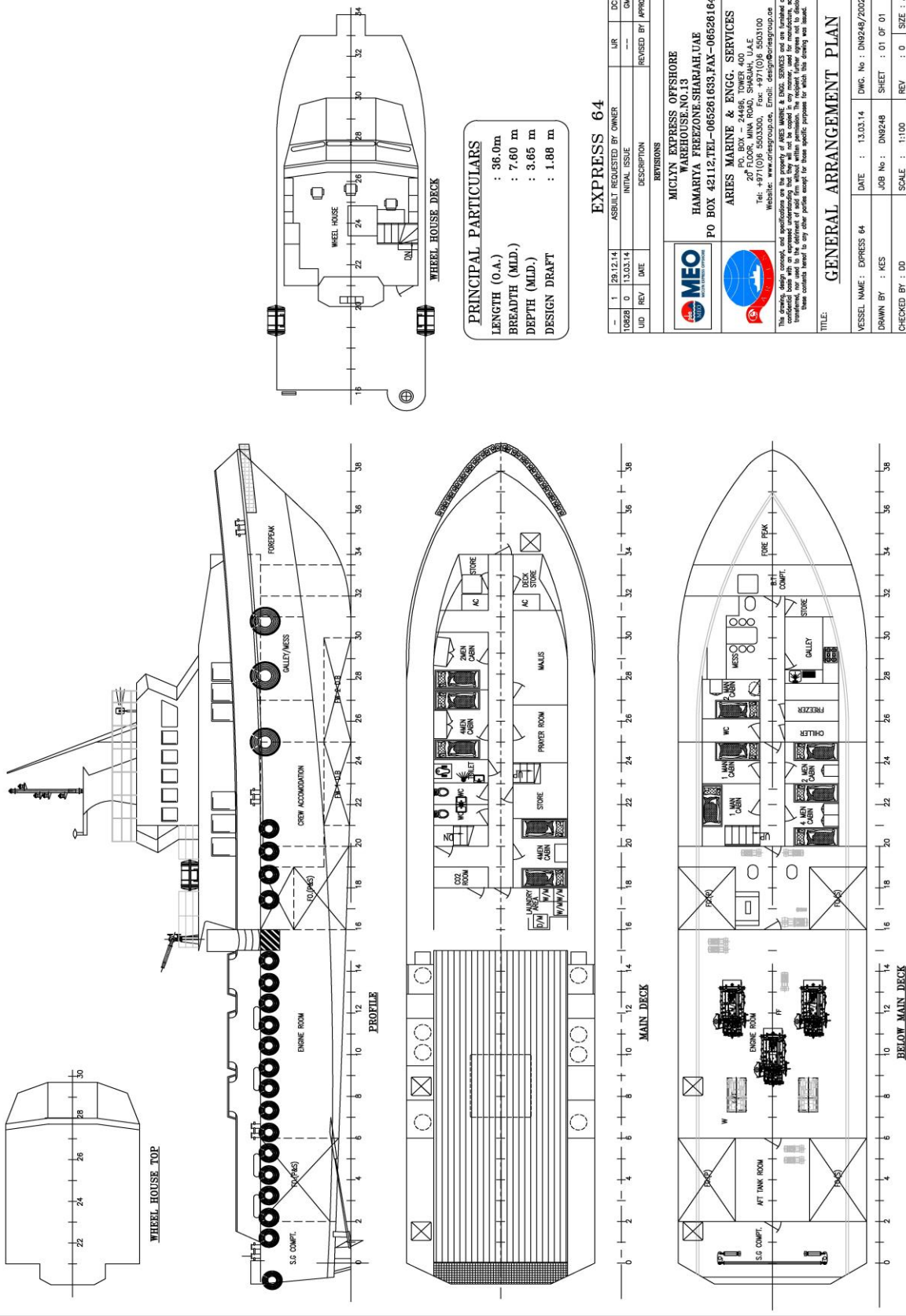
### INTERNAL FIRE-FIGHTING & ANTI-POLLUTION EQUIPMENT

Emergency Fire Pump	Koshin Robin DY 23, N0.011417902
CO2 Fi-Fi System	Fixed CO2 System for Engine Room
Fire Detection & Alarm	Optical Smoke, Multi-Sensor Smoke & Heat Detector

### LIFE-SAVING EQUIPMENT

Life Rafts	2 x 25 men, SOLAS Compliant
Rescue Boat c/w Davit	Nil

# GENERAL ARRANGEMENT PLAN - EXPRESS 64



**PRINCIPAL PARTICULARS**  
 LENGTH (O.A.) : 36.0m  
 BREADTH (MLD.) : 7.60 m  
 DEPTH (MLD.) : 3.65 m  
 DESIGN DRAFT : 1.88 m

## EXPRESS 64

NO.	DATE	DESCRIPTION	BY	APPROVED
1	28.12.14	ASBUILT REQUESTED BY OWNER	LR	DCF
0	13.03.14	INITIAL ISSUE	---	GM
10828				

**MICLYN EXPRESS OFFSHORE**  
 WAREHOUSE.NO.13  
 HAMARIYA FREEZONE.SHARJAH,UAE  
 PO BOX 42112.TEL-065261633.FAX-065261644

**ARIES MARINE & ENGG. SERVICES**  
 2/F FLOOR, MINA ROAD, SHARJAH, U.A.E  
 Tel: +977(0)6 5503300, Fax: +977(0)6 5503100  
 Website: www.ariesmarine.com, Email: design@ariesmarine.com

This sheet, which is part of a contract, is the property of ARIES MARINE & ENGG. SERVICES. It is to be used only for the purpose for which it was prepared and is not to be used for any other purpose without the written consent of ARIES MARINE & ENGG. SERVICES. It is to be returned to ARIES MARINE & ENGG. SERVICES when it is no longer required.

REVISIONS			
NO.	DATE	DESCRIPTION	BY

## GENERAL ARRANGEMENT PLAN

VESSEL NAME : EXPRESS 64	DATE : 13.03.14	DWG. No : DNG248/2002
DRAWN BY : KCS	JOB No : DNG248	SHEET : 01 OF 01
CHECKED BY : DD	SCALE : 1:100	REV : 0
	SIZE : A2	

