



MEO
MICLYN EXPRESS OFFSHORE

EXPRESS 75

Fast Utility Craft/ Crewboat



PRINCIPAL PARTICULARS

Year Built	2013
Place Built	Singapore
Design	FLEX 38, Penguin Shipyard Int
Flag	Panama
Length Overall	38.00 m
Length BP	36.00 m
Breadth Moulded	7.60 m
Depth Moulded	3.65 m
Draft (max)	1.89 m
Freeboard (SLL)	1.41 m
Class	BV
Notation	I, Hull, Mach, Crewboat, Sea Area 3 Max Significant Wave Height Not Exceeding 3.0 m
GRT/ NRT	257.00 T / 77.00 T
Deadweight	160.00 T

DECK PARTICULARS

Clear Deck Area	80.00 m ²
Deck Carrying Load	55.00 T
Deck Strength	2.00 T/m ²

PERFORMANCE

Maximum Speed	18 Knots, 20 T DWT
Economic Speed	16 Knots, 20 T DWT

PROPULSION SYSTEM

Main Engines	3 x Baudouin 12M26.2P2, 1100 BHP @ 1900 RPM, Total 3300 BHP, 2430 kW
Auxiliary Engines	2 x Baudouin 6W105M, 80 kW @ 1500 RPM
Portable Generator	Denko KDE 3300
Emergency Generator	Denko KDE 3300E
Bow Thruster	45 kW Electro Hydraulic, 0.6 T Thrust
Propellers	Fixed Pitch Propellers, Triple Screw
Steering Gear System	2 x Duplex Electro Hydraulic Pump System
Rudder	2 x CAST/BV396SGP126E/D

TANK CAPACITIES

Fuel Oil	68.77 m ³
Fresh Water	30.92 m ³

CARGO DISCHARGE CAPACITIES

Fuel Oil Pump	Same with Current Tech Specs
Fresh Water Pump	Nil
Bilge	Nil

DECK EQUIPMENT

Anchor Windlass c/w Bow	HYPAC 6
-------------------------	---------

ACCOMMODATION

Passenger Seats	16
Crew	1 x 1, 3 x 2, 1 x 3 = 10

EXTERNAL FIRE-FIGHTING EQUIPMENT

Fi-Fi Notation	Same with Current Tech Specs
Fi-Fi Monitors	600 m ³ /hr, 110 m Throw Length
Fi-Fi Pump	600 m ³ /hr
Oil Dispersant System	Nil

INTERNAL FIRE-FIGHTING & ANTI-POLLUTION EQUIPMENT

Emergency Fire Pump	Nil
CO2 Fi-Fi System	Fixed CO2 System for Engine Room
Fire Detection & Alarm	Optical, Multi-Sensor Smoke & Heat Detector

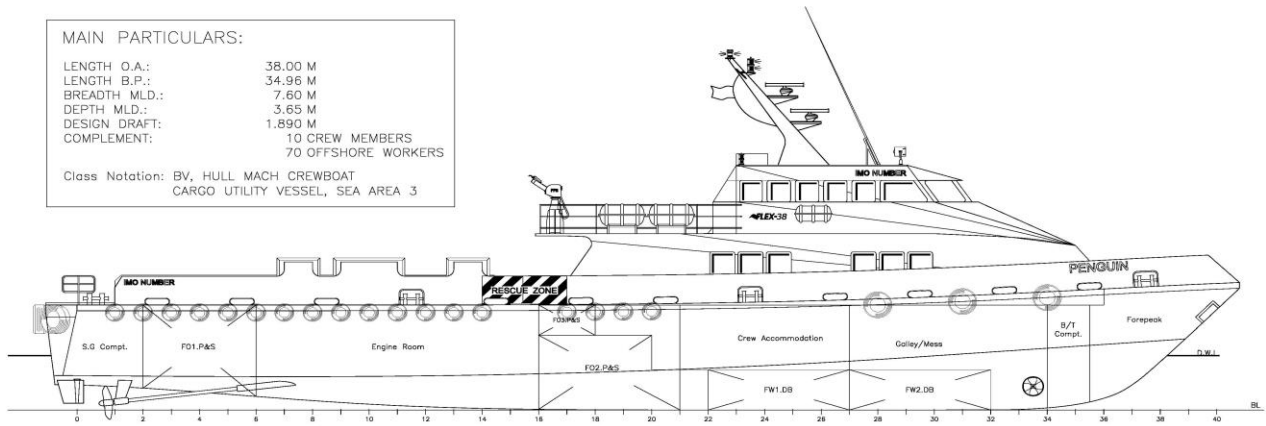
LIFE-SAVING EQUIPMENT

Life Rafts	4 x 25 men, SOLAS Compliant
Rescue Boat c/w Davit	Nil

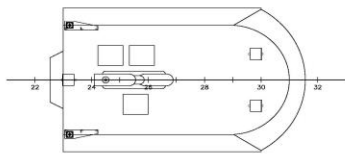
MAIN PARTICULARS:

LENGTH O.A.: 38.00 M
 LENGTH B.P.: 34.96 M
 BREADTH MLD.: 7.60 M
 DEPTH MLD.: 3.65 M
 DESIGN DRAFT: 1.890 M
 COMPLEMENT: 10 CREW MEMBERS
 70 OFFSHORE WORKERS

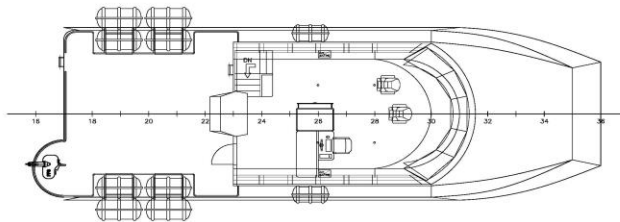
Class Notation: BV, HULL MACH CREWBOAT
 CARGO UTILITY VESSEL, SEA AREA 3



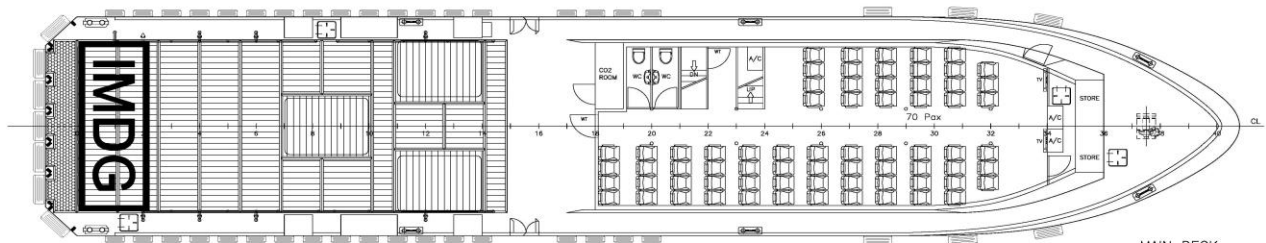
PROFILE



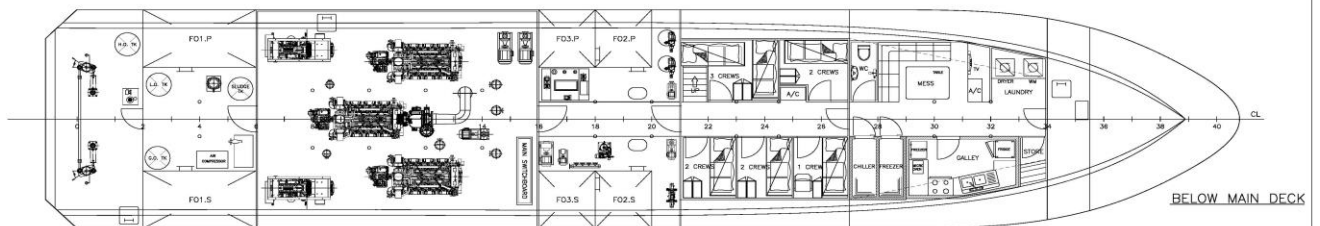
WHEELHOUSE TOP



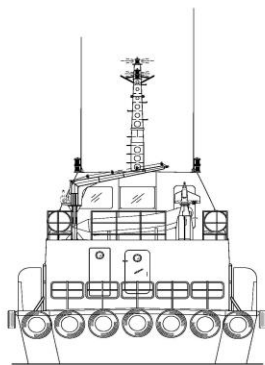
WHEELHOUSE PLAN



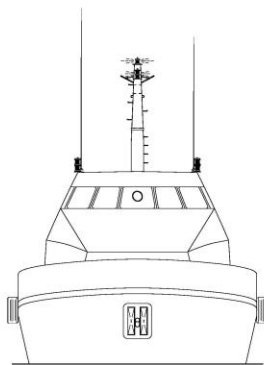
MAIN DECK



BELOW MAIN DECK



STERN VIEW



FRONT VIEW

24096T
 BUREAU VERITAS Section 24097U.....
 VU avec observations
 Singapore, 16-Mar-2013
 (Electronic document)
 The plan approval office
 SPO/13/01065

PROJECT:	FLEX-38(H203-204)		
TITLE:	GENERAL ARRANGEMENT		
PENGUIN SHIPYARD INTERNATIONAL PTE LTD 18 Tuas Basin Link, Singapore 638784 Tel: 68628322 Fax: 68622150 This drawing and the information contained herein is supplied on the understanding that they are the exclusive property of Penguin Shipyards International Pte Ltd. They must not be used or reproduced in whole or in part, without permission in writing.			
DRAWN:	ZH	DATE:	01,AUG,2011
CHECKED:	PATRICK	DATE:	08,AUG,2011
APPROVED:	PATRICK	DATE:	20,AUG,2011
DRAWING No.:	PSI-H196-G-01	SIZE:	A1
		SCALE:	1:75
		REVISION:	B
		SHEET:	1 OF 1