



## EXPRESS 76

Fast Utility Craft/ Crewboat

### PRINCIPAL PARTICULARS

Year Built	2013
Place Built	Indonesia, Batam
Design	Penguin Shipyard Int'l
Flag	Panama
Length Overall	38.00 m
Length BP	36.00 m
Breadth Moulded	7.60 m
Depth Moulded	3.65 m
Draft (max)	1.89m
Freeboard (SLL)	17.60 m
Class	BV
Notation	I, Hull, Mach, Crewboat, Sea Area 3 Max Significant Wave Height Not Exceeding 3.0 m
GRT/ NRT	239.00 T / 71.00 T
Deadweight	131.48 T

### DECK PARTICULARS

Clear Deck Area	80.00 m <sup>2</sup>
Deck Carrying Load	55.00 T
Deck Strength	2.00 T/m <sup>2</sup>

### PERFORMANCE

Maximum Speed	25 Knots
Economic Speed	23 Knots

### PROPULSION SYSTEM

Main Engines	3 x Baudouin 12M26.2, 1100 BHP, 810 kW @ 1900 RPM, Total 3300 BHP
Auxiliary Engines	2 x Baudouin 6W105M, 90 kW @ 1500RPM
Portable Generator	Denko KDE 3300
Emergency Generator	Nil
Bow Thruster	45 kW Petters, 0.6 T
Propellers	3 x Fixed Pitch Propellers
Steering Gear System	Duplex Electro Hydraulic Pump
Rudder	2 Units

### TANK CAPACITIES

Fuel Oil	68.71 m <sup>3</sup>
Fresh Water	30.92 m <sup>3</sup>

### CARGO DISCHARGE CAPACITIES

Fuel Oil Pump	Bombas ITUR SA 25 m <sup>3</sup> /hr
Fresh Water Pump	Nil
Bilge	DESMI, S70-50-175NA09

### DECK EQUIPMENT

Anchor Windlass c/w Bow	HYPAC6
-------------------------	--------



### ACCOMMODATION

Passenger Seats	70
Crew	1 x 1, 3 x 2, 1 x 3 = 10

### EXTERNAL FIRE-FIGHTING EQUIPMENT

Fi-Fi Notation	Equivalent to 1/4 Fi-Fi c/w Water Spray System
Fi-Fi Monitors	600 m <sup>3</sup> /h, 100 m / 45 m Throw Length
Fi-Fi Pump	600 m <sup>3</sup> /hr @ 1900 RPM
Oil Dispersant System	Inductor, Proportion Pump, 200 L

### INTERNAL FIRE-FIGHTING & ANTI-POLLUTION EQUIPMENT

Emergency Fire Pump	YanMar YDP 20E, 30m <sup>3</sup> /hr @ 35m head
CO2 Fi-Fi System	Fixed CO2 System for Engine Room
Fire Detection & Alarm	Apollo

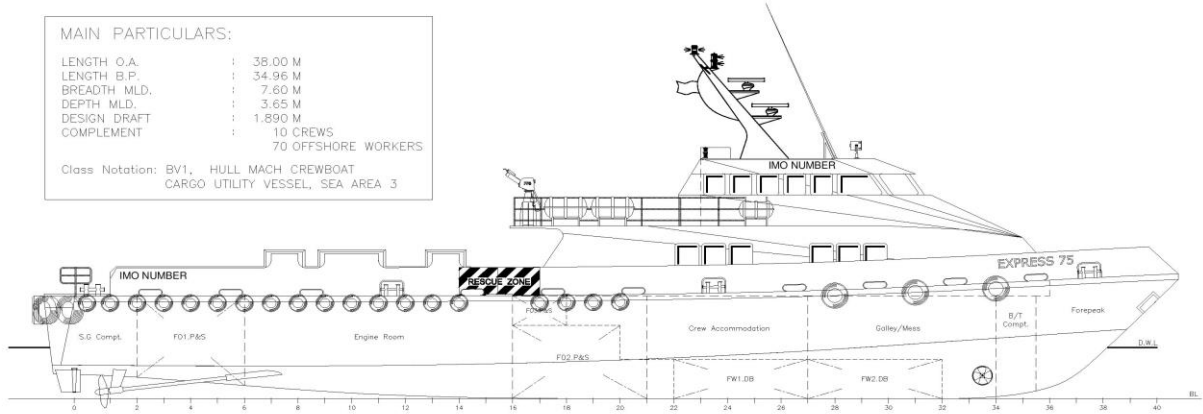
### LIFE-SAVING EQUIPMENT

Life Rafts	2 x 10, 8 x 25 men
Rescue Boat c/w Davit	Nil

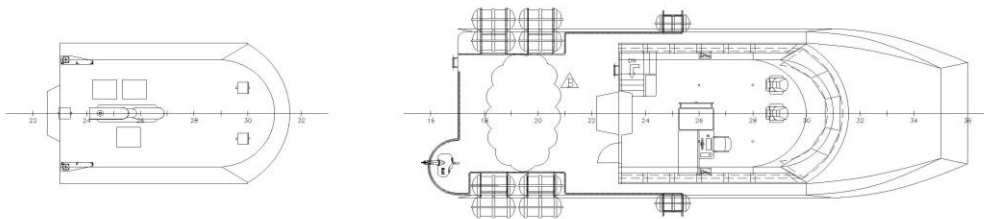
**MAIN PARTICULARS:**

LENGTH O.A. : 38.00 M  
 LENGTH B.P. : 34.96 M  
 BREADTH MLD. : 7.60 M  
 DEPTH MLD. : 3.65 M  
 DESIGN DRAFT : 1.890 M  
 COMPLEMENT : 10 CREWS  
 70 OFFSHORE WORKERS

Class Notation: BV1, HULL MACH CREWBOAT  
 CARGO UTILITY VESSEL, SEA AREA 3

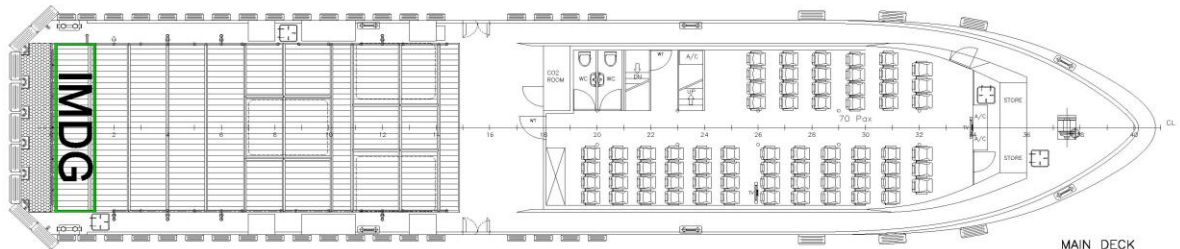


PROFILE

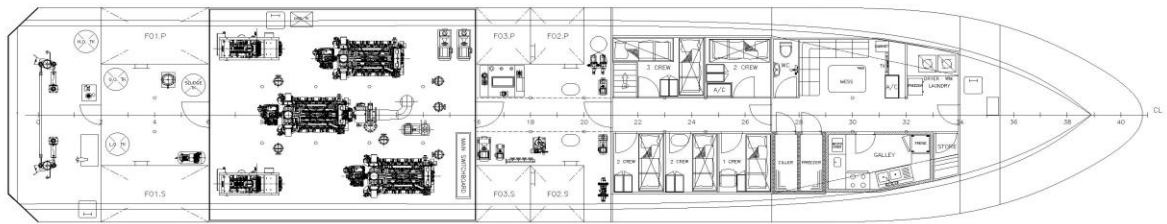


WHEELHOUSE TOP

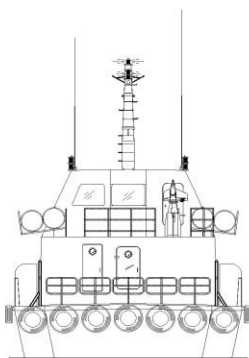
WHEELHOUSE PLAN



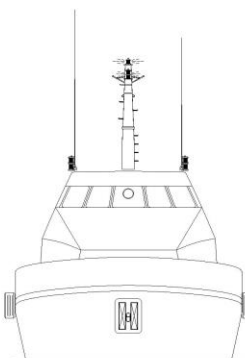
MAIN DECK



BELOW MAIN DECK



STERN VIEW



FRONT VIEW

B	Remove rescue boat and Davit Boom from Bridge deck.	THH	18.JAN.2013	OWNER COMMENT
REV.	MODIFICATION	DONE	DATE	REMARK
PROJECT: FLEX-38 (H203)				
TITLE: GENERAL ARRANGEMENT				
<b>PENGUIN SHIPYARD INTERNATIONAL PTE LTD</b> 18 Tais Basin Link, Singapore 638784 Tel: 68628322 Fax: 68622150				
<small>This drawing and the information contained herein is supplied on the understanding that they are the exclusive property of Penguin Shipyard International Pte Ltd. They must not be used or reproduced in whole or in part, without permission in writing.</small>				
DRAWN	: ZH	DATE	: 01.AUG.2011	SIZE : A1
CHECKED	: PATRICK	DATE	: 08.AUG.2011	SCALE : 1:75
APPROVED	: PATRICK	DATE	: 20.AUG.2011	REVISION : B
DRAWING No.:	PSI-H196-G-01			SHEET : 1 OF 1