



## EXPRESS 91

Fast Utility Craft/ Crewboat

### PRINCIPAL PARTICULARS

Year Built	2015
Place Built	Batam, Indonesia
Design	Penguin Shipyard Int'l
Flag	Panama
Length Overall	40.00 m
Length BP	37.46 m
Breadth Moulded	7.60 m
Depth Moulded	3.65 m
Draft (max)	1.90 m
Freeboard (SLL)	1.79 m
Class	BV
Notation	I + Hull + MACH, Crewboat, Sea area 3 (Max. Significant Wave Height > 3.00 m)
GRT/ NRT	272.00 T / 81.00 T
Deadweight	132.00 T

### DECK PARTICULARS

Clear Deck Area	100.00 m <sup>2</sup>
Deck Carrying Load	60.00 T
Deck Strength	2.00 T/m <sup>2</sup>

### PERFORMANCE

Maximum Speed	28 Knots @ 35 DWT
Economic Speed	25 Knots @ 35 DWT

### PROPULSION SYSTEM

Main Engines	2 x Cummins KTA38M2 & 1 x KTA50M2 (IMO Tier II), 2 x 1350 BHP & 1 x 1800 BHP @ 1900 RPM, Total 4500 BHP
Auxiliary Engines	3 x Cummins 6CT8.3D(M), 90 kW @ 1500 RPM
Portable Generator	Denko KDE3300, 3 kW @ 50 Hz, 15/230V
Emergency Generator	Nil
Bow Thruster	Electro Hydraulic @ 100 KW, 1.4 T Thrust
Propellers	3 x Fixed Pitch Propellers, 5-blade
Steering Gear System	2 x Hydraulic Power / DRIQ001
Rudder	2 x Mecast

### TANK CAPACITIES

Fuel Oil	71.30 m <sup>3</sup>
Fresh Water	30.42 m <sup>3</sup>

### CARGO DISCHARGE CAPACITIES

Fuel Oil Pump	23.00 m <sup>3</sup> /hr
Fresh Water Pump	110/220V @ 2850 RPM, 50 Hz, Myers
Bilge	Nil

### DECK EQUIPMENT

Anchor Windlass c/w Bow	Hypac Electro Hydraulic Winch c/w Wire rope, Chain & Single Anchor
Crane	Palfinger PK4501, 0.5 T @ 6 m radius



### ACCOMMODATION

Passenger Seats	100
Crew	2 x 1, 4 x 2 = 10

### EXTERNAL FIRE-FIGHTING EQUIPMENT

Fi-Fi Notation	Equivalent to 1/4 FIFI System c/w Water Spray
Fi-Fi Monitors	600 m <sup>3</sup> /hr @ 100 m Throw Length
Fi-Fi Pump	600 m <sup>3</sup> /hr @ 130m Head
Oil Dispersant System	1 V-Jet Nozzles (P&S), 200 L

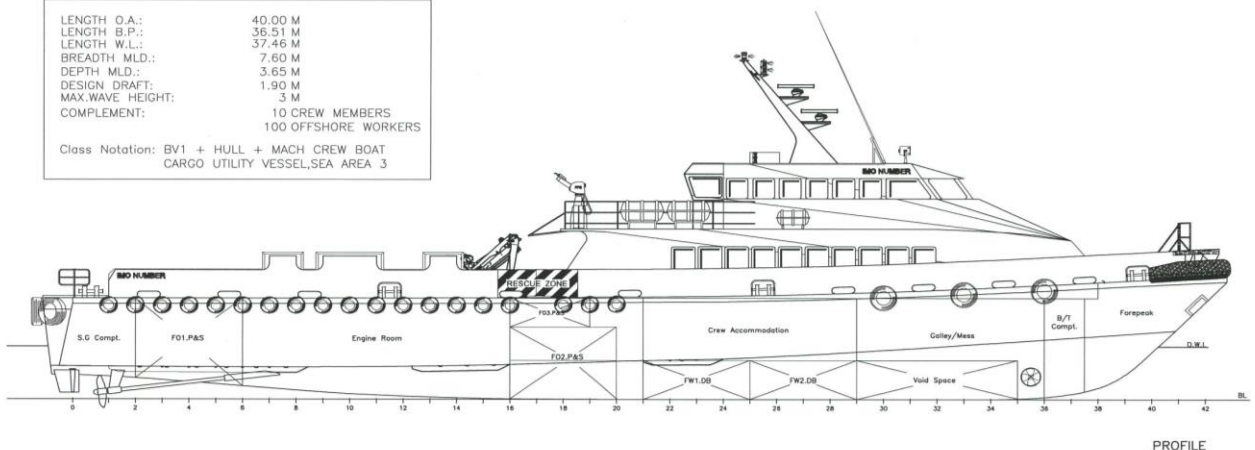
### INTERNAL FIRE-FIGHTING & ANTI-POLLUTION EQUIPMENT

Emergency Fire Pump	Matsuka/Yanmar, 30m <sup>3</sup> /hr @ 35 m Head
CO2 Fi-Fi System	Fixed CO2 System for Engine Room
Fire Detection & Alarm	Apollo

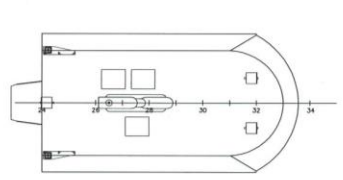
### LIFE-SAVING EQUIPMENT

Life Rafts	8 x 25, 2 x 10 men, SOLAS Compliant
Rescue Boat c/w Davit	1 x 6 men, 25 HP/20, Non-SOLAS Compliant

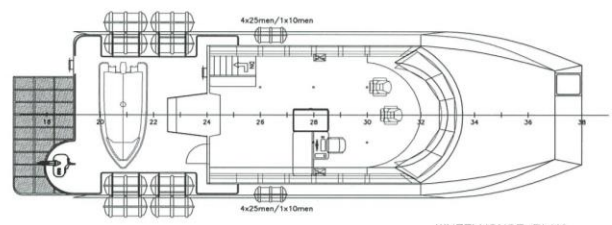
LENGTH O.A.: 40.00 M  
 LENGTH B.P.: 36.51 M  
 LENGTH W.L.: 37.46 M  
 BREADTH M.L.D.: 7.60 M  
 DEPTH M.L.D.: 3.65 M  
 DESIGN DRAFT: 1.90 M  
 MAX. WAVE HEIGHT: 3 M  
 COMPLEMENT: 10 CREW MEMBERS  
 100 OFFSHORE WORKERS  
 Class Notation: BV1 + HULL + MACH CREW BOAT  
 CARGO UTILITY VESSEL, SEA AREA 3



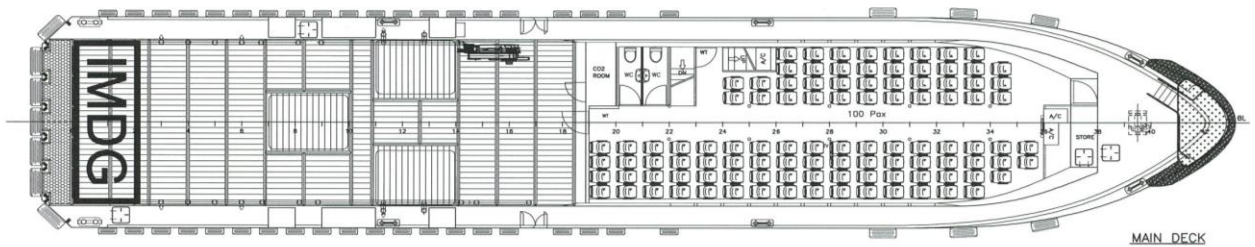
PROFILE



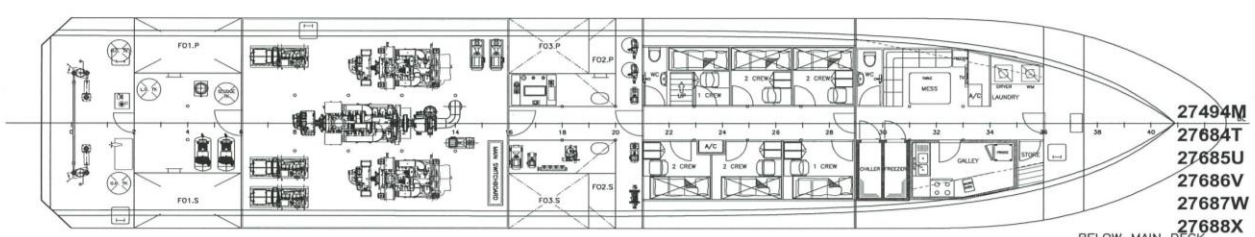
WHEELHOUSE TOP



WHEELHOUSE PLAN



MAIN DECK



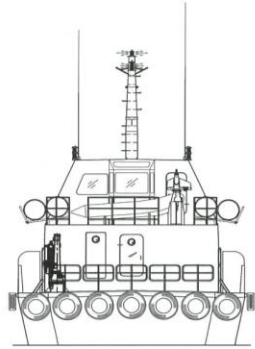
BELOW MAIN DECK

27494M  
 27684T  
 27685U  
 27686V  
 27687W  
 27688X  
 27689Y  
 27695F

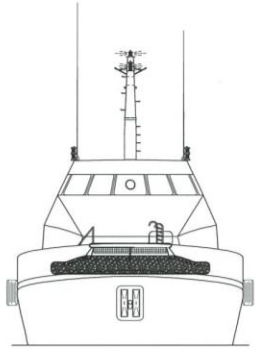
**BUREAU VERITAS Section**  
**VU avec observations**

Singapore, 03-Aug-2014

[Electronic document]  
 The plan approval office  
 SPO/14/02904



STERN VIEW



FRONT VIEW

PROJECT:	FLEX-40S (H255,260,261,263,264,265,268,276)		
TITLE:	GENERAL ARRANGEMENT		
 <b>PENGUIN SHIPYARD INTERNATIONAL PTE LTD</b> 18 Tuas Basin Link, Singapore 638784 Tel: 68628322 Fax: 68622150			
<small>This drawing and the information contained herein is supplied on the understanding that they are the exclusive property of Penguin Shipyard International Pte Ltd. They must not be used or reproduced in whole or in part, without permission in writing.</small>			
DRAWN:	STEPHEN	DATE:	27.MAR.2014
CHECKED:	YAW JH	DATE:	28.MAR.2014
APPROVED:	CHEW KH	DATE:	28.MAR.2014
DRAWING No.:	PSI-H255-G-01	SHEET:	1 OF 1