



EXPRESS 26

Crewboat/ Utility Vessel

PRINCIPAL PARTICULARS

Year Built	2000
Place Built	UAE
Design	Seaspray Aluminum Boats
Flag	Panama
Length Overall	30.48 m
Length BP	30.62 m
Breadth Moulded	7.93 m
Depth Moulded	3.28 m
Draft (max)	1.50 m
Freeboard (SLL)	1786 mm
Class	BV
Notation	I, HULL, MACH, Crewboat, Unrestricted Navigation
GRT/ NRT	208.00 T / 62.00 T
Deadweight	Nil

DECK PARTICULARS

Clear Deck Area	50.00 m ²
Deck Carrying Load	Nil
Deck Strength	Nil

PERFORMANCE

Maximum Speed	18 Knots @ 20 T DWT
Economic Speed	16 Knots @ 20 T DWT

PROPULSION SYSTEM

Main Engines	4 x Cummins KTA @ 1800 RPM
Auxiliary Engines	2 x Cummins, 75 kW
Portable Generator	Nil
Emergency Generator	Nil
Propellers	4 x Solid Screw Propeller, Ord 5
Steering Gear System	Nil
Rudder	2 Units

TANK CAPACITIES

Fuel Oil	32.00 m ³
Fresh Water	22.00 m ³

ACCOMMODATION

Passenger Seats	Nil
Crew Cabins	2 x 1, 6 x 2 = 8

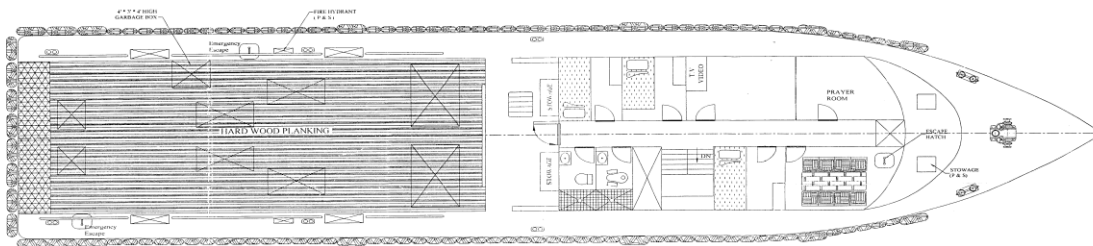
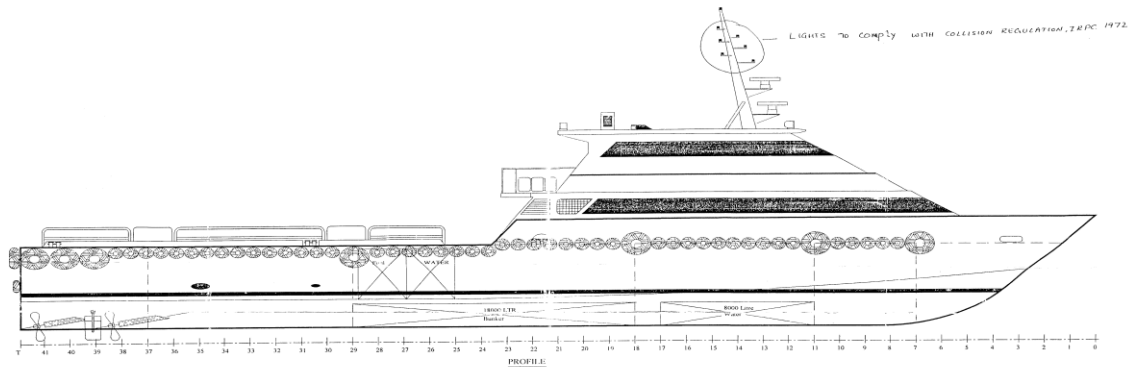


INTERNAL FIRE-FIGHTING & ANTI-POLLUTION EQUIPMENT

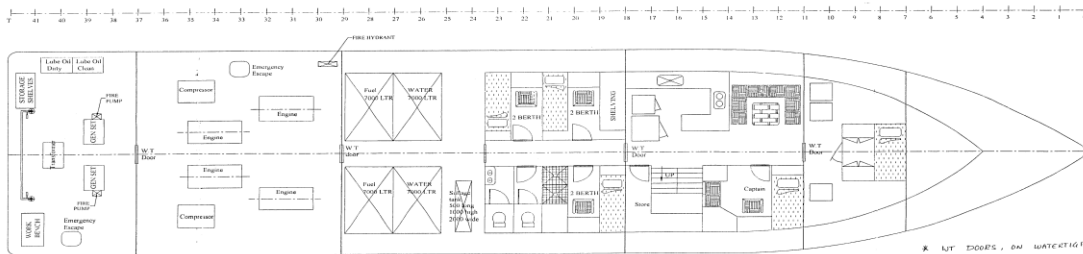
Emergency Fire Pump	Robin Pump 520 L/min
CO2 Fi-Fi System	4 Cylinders
Fire Detection & Alarm	Smoke Detectors, Heat Detector

LIFE-SAVING EQUIPMENT

Life Rafts	2 x 25 men
------------	------------



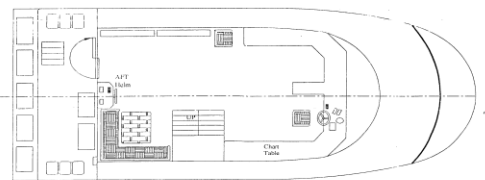
MAIN DECK PLAN



BELOW DECK PLAN

* ALL DOORS, ON WATCHTOWER BULKHEADS TO BE NORMALLY KEPT CLOSED, WHILE AT SEA. USE OF DOOR TO BE REGULATED BY THE MASTER.

PARTICULARS	
LENGTH O.A	110' FEET
BEAM	26' 0"
DEPTH	3.28 M
DRAFT	1.50 M (max.)
FUEL	32000 LTRS
WATER	22000 LTRS
CARGO	35 TONNES
PASSENGERS	5
CREW	6



TOP DECK PLAN

Notes:
Frame Spacing: 800

BUREAU VERITAS Revision: 018/2011
REVIEWED
BY: [Signature]
DATE: 02/03/2011
PROJECT: 02-V-01-01

Seaspray Aluminium Boats "Emirates" (L.L.C)	
P.O. Box 3700 ALHAYAT	UNITED ARAB EMIRATES Email: seaspray@emirates.ae
Tel: 973 3333333 Fax: 973 3333333	
110' FOOT CREW / SECURITY BOAT	
ABER 36	
Checked <i>[Signature]</i>	Drawn <i>[Signature]</i>
Scale 1:50	Date MAR.2000
Dwg No. 444-C02-155-1	
This drawing and all information shown herein are the exclusive property of Seaspray Aluminium Boats "Emirates" and submitted only on a confidential basis. The Recipient agrees not to reproduce the drawing, to make or use copies and not to disclose the drawing or the information shown herein or if he made to a third party without prior written consent from Seaspray Aluminium Boats "Emirates".	

