



MAGELLAN 1

8200 BHP / 107 T BP / AHT

PRINCIPAL PARTICULARS

Year Built	2011
Place Built	PT Loh and Loh Yard, Batam, Indonesia
Design	Conan Wu
Flag	Panama
Length Overall	52.00 m
Length BP	44.40 m
Breadth Moulded	15.00 m
Depth Moulded	6.50 m
Draft (max)	5.70 m
Freeboard (SLL)	0.80 m
Class	BV
Notation	I x Hull x Mach, Tug; Fire Fighting Ship 1 - Water Spraying; Special Services - Anchor Handling, Unrestricted navigation
GRT/ NRT	1496.00 T / 449.00 T
Deadweight	1025.80T
Bollard Pull	103.86 T

DECK PARTICULARS

Clear Deck Area	240.00 m ²
Deck Carrying Load	200.00 T
Deck Strength	5.00 T/m ²

PERFORMANCE

Maximum Speed	12 Knots
---------------	----------

PROPULSION SYSTEM

Main Engines	2 x General Electric 16V228, 4100 BHP, 3057 kW @ 1050 RPM, Total 8200 BHP
Auxiliary Engines	3 x Cummins KTA19, 380 kW @ 1500 RPM
Emergency Generator	Cummins, 175 kW
Bow Thruster	Kamome CPP Electric Driven, 66.70 kN
Stern Thruster	Kamome CPP Elec Driven, 49kN
Propellers	2 x Kamome CPP in Fixed Nozzles
Steering Gear System	2 x Electro-Hydraulic
Rudder	2 x Heel Pintle

TANK CAPACITIES

Fuel Oil	597.20 m ³
Fresh Water	267.20 m ³
Drill Water	122.00 m ³
Bilge	5.50 m ³
Ballast Water	125.30 m ³



CARGO DISCHARGE CAPACITIES

Fuel Oil Pump	100 m ³ /hr
Fresh Water Pump	100 m ³ /hr
Drill Water Pump	100 m ³ /hr
Bilge Pump	70 m ³ /hr

DECK EQUIPMENT

Anchor & Chain	2 x Stockless Anchor 1920 kg, 220 m x 34 mm U2 Stud Link Chains
Tugger Winch	2 x Electro-Hydraulic 10 T @ 5 m/min
Capstan	2 x Electro-Hydraulic 5 T @ 5 m/min
Anchor Windlass c/w Bow	Macgregor Plimsoll, Electro-Hydraulic w/ Double Gypsies, Single Mooring Drum, Double Warping Ends of 400 mm dia
Crane	SWL 5 T @ 15 m Radius (max SWL)

ANCHOR HANDLING & TOWING EQUIPMENT

Anchor Handling/ Towing Winch	Electro-Hydraulic Double Drum Waterfall Type
AH/Towing Drum Capacity	1000 m L x 60 mm Dia SWP
Spare Reel Drum Capacity	10 T x 20 m/min, 1000 m L x 71 mm Dia SWR
Line Pull @ First Layer	250 T @ 6 m/min
Brake Holding	400 T @ 1st Layer
Towing Pin	SWL 300 T
Shark Jaw	SWL 350 T
Stern Roller	SWL 400 T, 1500 mm Dia x 6000 mm W

ACCOMMODATION

Berths	6 x 1, 10 x 2 Berths
Total Pax	26

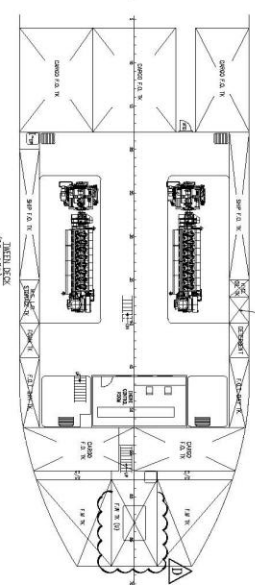
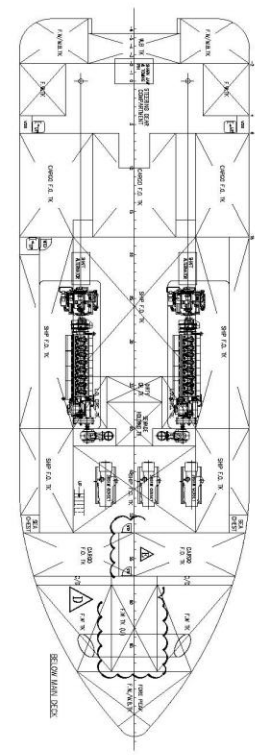
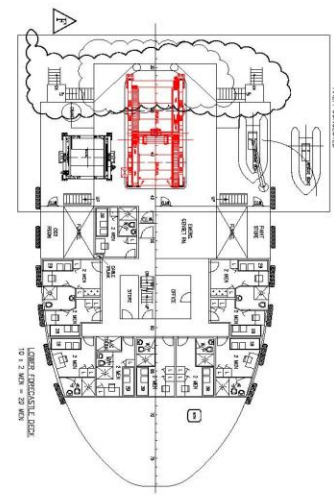
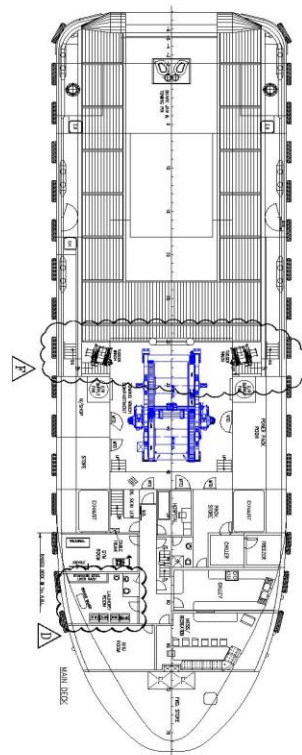
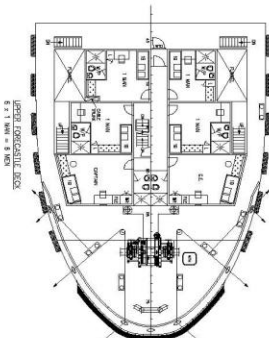
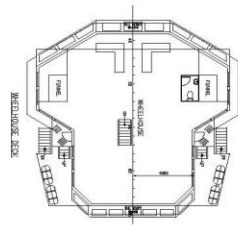
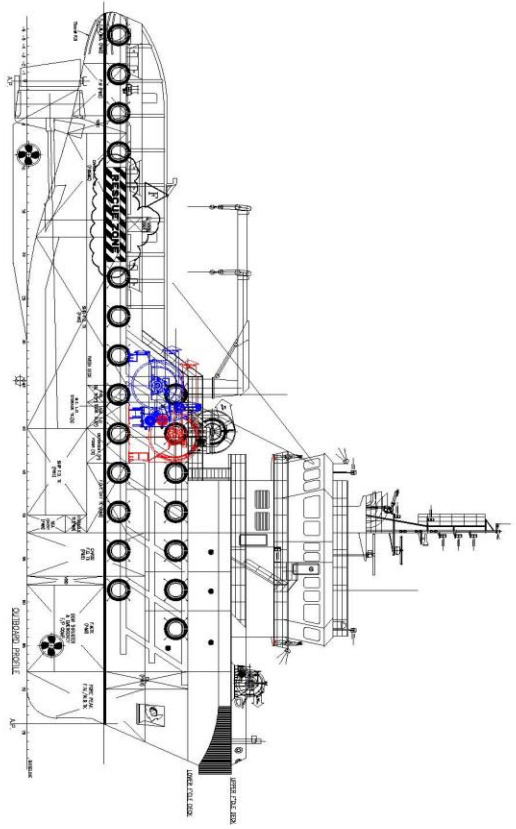
EXTERNAL FIRE-FIGHTING EQUIPMENT

Fi-Fi Notation	Fully Compliant with BV Requirements
Fi-Fi Monitors	1 x Fi-Fi Monitor, 1200 m ³ /hr, 120 m Throw Length
Fi-Fi Pump	2 x Fi-Fi Pumps, 1650 m ³ /hr

LIFE-SAVING EQUIPMENT

Life Rafts	2 x 10, 2 x 20 Men, SOLAS Compliant
Rescue Boat c/w Davit	1 x 6 Men, 20 HP of Outboard Eng, 20 L Fuel, SOLAS Compliant

Particulars are believed to be correct but not guaranteed. Owners reserve the rights to amend the specifications without notifications. Particulars are entirely without warranty as to correctness and interested parties must inspect vessel's certificates, drawings or physical inspection of vessel.



PRINCIPAL PARTICULARS

LENGTH O.A.	50.00m
LENGTH B.P.	44.40m
LENGTH W.L.	48.80m
BEAM M.D.	15.00m
DEPTH M.D.	6.50m
DRAHT M.D.	5.00m
DRAHT MAX.	5.70m
COMPLEMENT	28 MEN

CLIENT	DESCRIPTION	REV	DNV BY	CHK BY	DATE
	MCLYN EXPRESS OFFSHORE				
<p>TITLE: GENERAL ARRANGEMENT PLAN</p> <p>SHIP NAME: MAGELLAN 1</p>					
		CONTRACT NO.	DRAWING NO.		
<p>SHIP NAME: MAGELLAN 1</p>		MECHNO.:	SCALE:		
DESIGNED:	USF	REVISED:	F1		
CHECKED:	OCF	DATE:	12 JANUARY 2018		