



MICLYN OPAL

40M / 3200BHP / Utility Service Vessel

PRINCIPAL PARTICULARS

Year Built	2012
Place Built	PT Miclyn Shipbuilding, Batam, Indonesia
Design	Shiptech
Flag	Panama
Length Overall	39.80 m
Length BP	36.00 m
Breadth Moulded	10.00 m
Depth Moulded	4.20 m
Draft (max)	3.50 m
Freeboard (SLL)	0.64 m
Class	BV
Notation	1 x Hull x Mach Tug, Unrestricted Navigation
GRT/ NRT	498.00 T / 149.00 T
Deadweight	306.61 T
Bollard Pull	40.14 T (average), 40.53 T (maximum)

DECK PARTICULARS

Clear Deck Area	107.00 m ²
Deck Carrying Load	13.00 T
Deck Strength	2.45 T/m ²

PERFORMANCE

Maximum Speed	11 Knots
Economic Speed	10 Knots

PROPULSION SYSTEM

Main Engines	2 x Cummins KTA50M2, 1600 BHP @ 1800 RPM, Total 3200 BHP
Auxiliary Engines	3 x Cummins 6CTA 8.3, 185 kW
Emergency Generator	1 x Cummins 6BT5.9, 80 kW, 440V
Bow Thruster	Kamome TFA-50 MA, 2 T Thrust
Propellers	2 x Fixed Pitch Propellers with Kort Nozzles
Steering Gear System	2 x Electro-Hydraulic
Rudder	2 x Fixed Units

TANK CAPACITIES

Fuel Oil	302.72 m ³
Fresh Water	129.14 m ³
Drill Water	42.00 m ³
Bilge	5.45 m ³
Ballast Water	43.65 m ³

CARGO DISCHARGE CAPACITIES

Fuel Oil Pump	40 m ³ /hr
Fresh Water Pump	40 m ³ /hr
Bilge Pump	40 m ³ /hr



DECK EQUIPMENT

Anchors & Chain	2 x Stockless Anchor 750 kg, 330 m x 20 mm (Dia) U2 Stud link Chains
Tugger Winch	Electro-Hydraulic Double Drum Waterfall Type Line Pull @ 1st Layer 50 T @ 6 m/min (1st Speed) 10 T @ 24 m/min (2nd Speed)
Capstan	1 x Electro-Hydraulic
Anchor Windlass c/w Bow	1 x Electro-Hydraulic
Crane	Nil

ANCHOR HANDLING & TOWING EQUIPMENT

Anchor Handling/ Towing Winch	Electro-Hydraulic Double Drum Waterfall Type
AH Drum Capacity	1000 m (L) x 20 mm (Dia) SWL
Towing Drum Capacity	1000 m (L) x 34 mm (Dia) SWL
Spare Reel Drum Capacity	Nil
Line Pull @ First Layer	50 T @ 6 m/min (1st Speed), 10 T @ 24 m/min (2nd speed)
Brake Holding	120 T @ 1st Layer
Towing Pin	SWL 100T
Shark Jaw	SWL 200T
Stern Roller	SWL 60 T, 4 m (W) x 1000 mm (Dia)

ACCOMMODATION

Berths	2 x 1, 4 x 2, 2 x 4 Berths
Total Pax	18

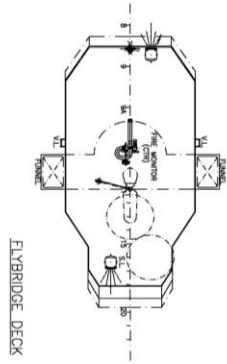
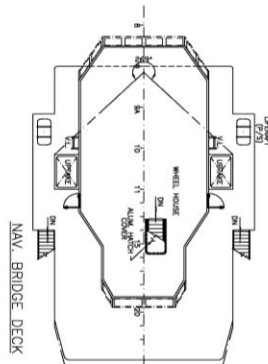
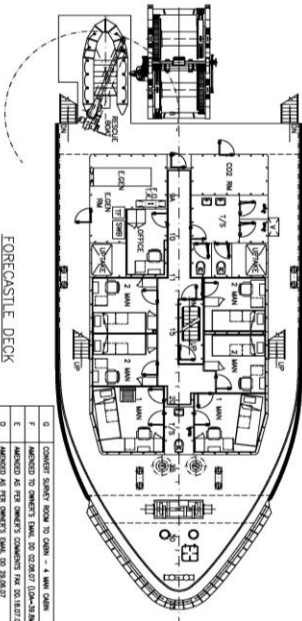
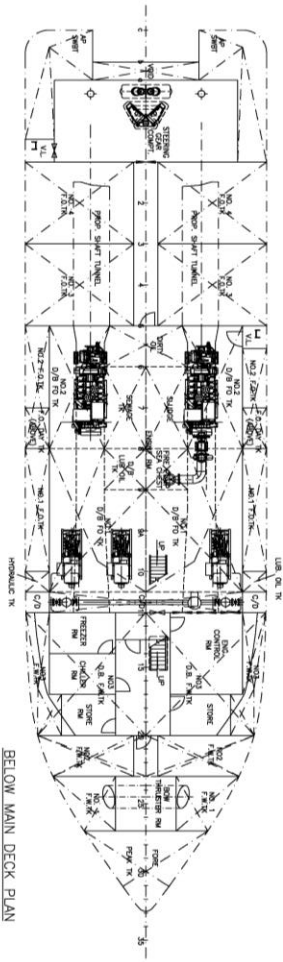
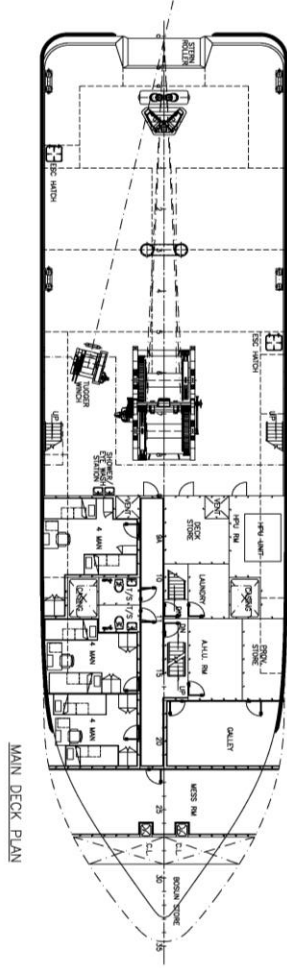
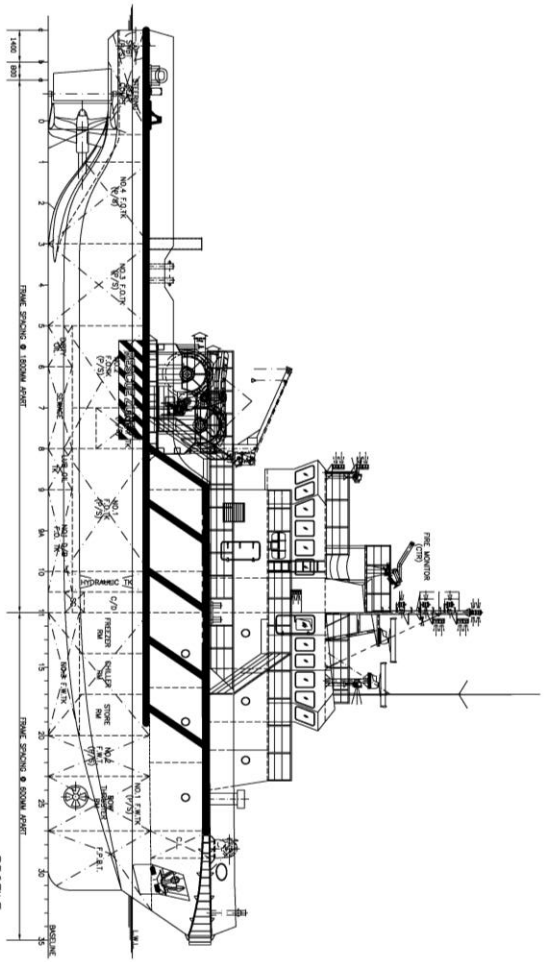
EXTERNAL FIRE-FIGHTING EQUIPMENT

Fi-Fi Notation	Equivalent to 1/2 Fi-Fi
Fi-Fi Monitors	1 x 1200 m ³ /hr, 130 m Throw Length
Fi-Fi Pump	1 x 1200 m ³ /hr

LIFE-SAVING EQUIPMENT

Life Rafts	2 x 25 Men, SOLAS Compliant
Rescue Boat c/w Davit	1 x 6 Men, 20 HP, 20 L, SOLAS Compliant

Particulars are believed to be correct but not guaranteed. Owners reserve the rights to amend the specifications without notifications. Particulars are entirely without warranty as to correctness and interested parties must inspect vessel's certificates, drawings or physical inspection of vessel.



PRINCIPAL PARTICULARS

LENGTH O.A. 39.80 M
 LENGTH W.L. 38.13 M
 LENGTH B.P. 35.33 M
 BREADTH MOULDED 10.00 M
 DEPTH MOULDED 4.20 M
 DRAFT DESIGNED 3.50 M

COMPLEMENT 22 CREW/
 PERSONNEL

APPROVED BY :
 ON :
 This drawing and the information contained hereon is required on the understanding that any use made of it is to be at the user's sole responsibility and that the user shall not be held responsible in any way for any error or omission in this drawing or information, without permission in writing.

NO	DESCRIPTION	DATE
1	DESIGN PROGRESS	01/02/2014
2	DESIGN PROGRESS	02/02/2014
3	DESIGN PROGRESS	03/02/2014
4	DESIGN PROGRESS	04/02/2014
5	DESIGN PROGRESS	05/02/2014
6	DESIGN PROGRESS	06/02/2014
7	DESIGN PROGRESS	07/02/2014
8	DESIGN PROGRESS	08/02/2014
9	DESIGN PROGRESS	09/02/2014
10	DESIGN PROGRESS	10/02/2014

PROJECT: 39 BM UTILITY / WORK BOAT
 PROJECT NO: 571515-01
 PROJECT MANAGER: E-Ship: ship@meo.com
 PROJECT DESIGNER: V. PRASAD

NAVAL ARCHITECTS

MECLYN EXPRESS OFFSHORE

NO	DESCRIPTION	DATE
1	CONVERT START ROOM TO OPEN - 4 MAN ROOM	28/11/11
2	ADDED TO CHANGES DRAW TO CHANGEST (2011-01-01)	28/11/11
3	ADDED TO CHANGES DRAW TO CHANGEST (2011-01-01)	28/11/11
4	ADDED TO CHANGES DRAW TO CHANGEST (2011-01-01)	28/11/11
5	ADDED TO CHANGES DRAW TO CHANGEST (2011-01-01)	28/11/11
6	ADDED TO CHANGES DRAW TO CHANGEST (2011-01-01)	28/11/11
7	ADDED TO CHANGES DRAW TO CHANGEST (2011-01-01)	28/11/11
8	ADDED TO CHANGES DRAW TO CHANGEST (2011-01-01)	28/11/11
9	ADDED TO CHANGES DRAW TO CHANGEST (2011-01-01)	28/11/11
10	ADDED TO CHANGES DRAW TO CHANGEST (2011-01-01)	28/11/11

BUILDER	FL/501	HULL NO/USE/101
DESIGNER	132428	SCALE
CHECKED	1:100	DWG NO
NOTED		571515-01
		SHEET 1 OF 1