



MICLYN ORION

38M / 3800BHP/ AHT

PRINCIPAL PARTICULARS

Year Built	2007
Place Built	Weihai Machinery Plant, China
Design	Yantai Haiwen Marine Engineering & Tech
Flag	Panama
Length Overall	38.10 m
Length BP	32.75 m
Breadth Moulded	10.60 m
Depth Moulded	4.90 m
Draft (max)	4.10 m
Freeboard (SLL)	0.80 m
Class	BV
Notation	I x Hull x Mach Tug, Unrestricted navigation
GRT/ NRT	488.00 T / 146.00 T
Deadweight	452.00 T
Bollard Pull	41.14 T (sustained), 41.75 T (max)

DECK PARTICULARS

Clear Deck Area	107.00 m ²
Deck Carrying Load	150.00 T
Deck Strength	5.00 T/m ²

PERFORMANCE

Maximum Speed	12 Knots
---------------	----------

PROPULSION SYSTEM

Main Engines	2 x Mitsubishi S16R MPTK, 1900 BHP @ 1650 RPM, Total 3800 BHP
Auxiliary Engines	2 x Cummins NT855-G1, 200 kW
Emergency Generator	1 x Cummins 6CT8.3, 100 kW
Bow Thruster	200 kW Diesel Driven in CPP Tunnel
Stern Thruster	Nil
Propellers	2 x Fixed Pitch Propellers in Kort Nozzles
Steering Gear System	2 x Scandia Electro-Hydraulic
Rudder	2 x Balanced Spade Type

TANK CAPACITIES

Fuel Oil	403.00 m ³
Fresh Water	75.00 m ³
Drill Water	Nil
Bilge	9.20 m ³
Ballast Water	63.00 m ³



CARGO DISCHARGE CAPACITIES

Fuel Oil Pump	25 m ³ /hr x 60 m head
Fresh Water Pump	3 m ³ /hr x 41 m head
Drill Water Pump	Nil
Bilge Pump	60 m ³ /hr x 21 m head

DECK EQUIPMENT

Anchor & Chain	2 x 660 kg Stockless Anchor, 220 m x 26 mm U2 Steel Stud Link Chains
Tugger Winch	2 x 5 T Pull 10 m/min
Capstan	Nil
Anchor Windlass c/w Bow	Electro-Hydraulic TH-26U2HAW 2.9 T @ 10 m/min
Crane	SWL 2 T @ 8 m Radius (max SWL)

ANCHOR HANDLING & TOWING EQUIPMENT

Towing Winch	Thor Hydraulics TH50AHTW Electro-Hydraulic Water Fall Type
AH/Towing Drum Capacity	1000 m (L) x 48mm (Dia)
Spare Reel Drum Capacity	1000 m (L) x 48mm (Dia)
Line Pull @ First Layer	50 T @ 10 m/min (1st Layer)
Brake Holding	130 T
Towing Pin	SWL 100 T
Shark Jaw	SWL 100 T, Rope 50-75 mm
Stern Roller	SWL 150 T, 4.5 m (L) x 1.35 m (Dia)

ACCOMMODATION

Berths	1 x 1, 2 x 2, 4 x 4 Berths
Total Pax	21

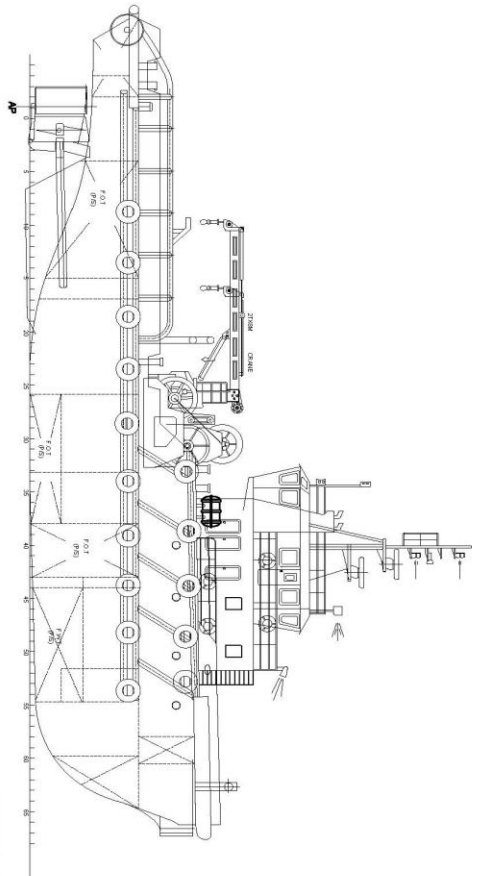
EXTERNAL FIRE-FIGHTING EQUIPMENT

Fi-Fi Notation	Nil
Fi-Fi Monitors	2 Units
Fi-Fi Pump	1 Unit

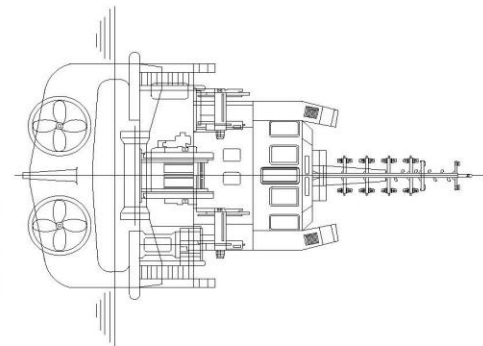
LIFE-SAVING EQUIPMENT

Life Rafts	2 x 20, 2 x 10 Men, SOLAS Compliant
Rescue Boat c/w Davit	Nil

Particulars are believed to be correct but not guaranteed. Owners reserve the rights to amend the specifications without notifications. Particulars are entirely without warranty as to correctness and interested parties must inspect vessel's certificates, drawings or physical inspection of vessel.



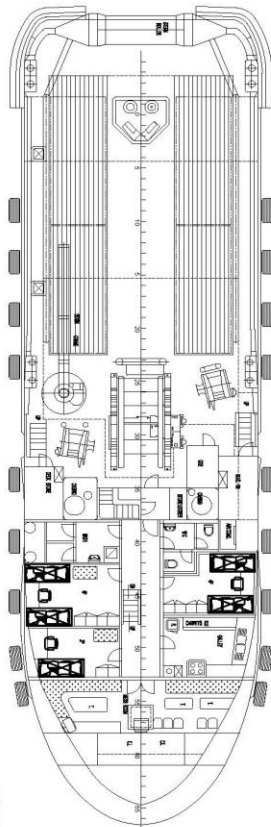
PROFILE VIEW



STERN VIEW

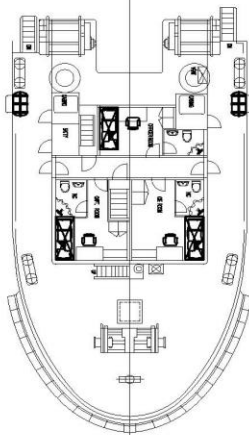
PRINCIPAL PARTICULARS

- LOA 38.10 MTS
- LWL 36.65 MTS
- BEAM 10.60 MTS
- DEPTH/HEAD 6.00 MTS
- FRAME SPACE 500 mm
- MAN. ENGINE 1 X ITO, ROPS, S/S, W/PK
- SPEED 12.0 KNOTS
- COMPLEMENT 18 MEN
- COVES 5 X
- VERTICALS 5



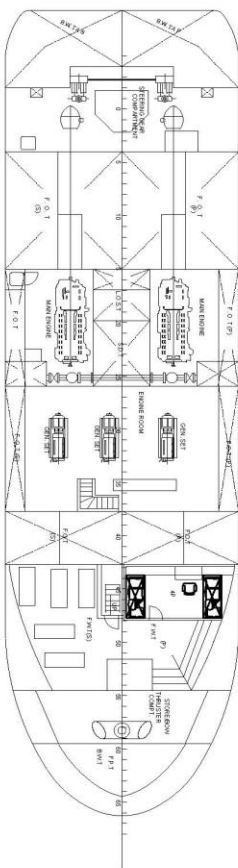
MAIN DECK PLAN

2.10m x 1 = 2
4.10m x 2 = 8
7.00m = 10



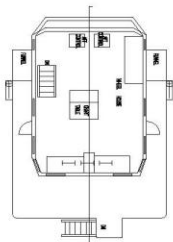
FORECASTLE DECK PLAN

1.10m x 2 = 2
2.10m x 1 = 2
7.00m = 8



BELOW MAIN DECK PLAN

4.10m x 1 = 4
7.00m = 8



NAV. BRIDGE DECK

MICLYN EXPRESS OFFSHORE



GENERAL ARRANGEMENT PLAN

SHIP NAME: MICLYN ORION

CONTRACT NO. MEO/MS-000181

DATE: 21 SEPTEMBER 2015

CLIENT	DESCRIPTION	REV.	DATE	DATE

