



MICLYN POWER

4000 BHP / Multi-Purpose Tug / Utility Vessel

PRINCIPAL PARTICULARS

Year Built	1999
Place Built	Nam Cheong Yard, Malaysia
Design	Conan Wu
Flag	Panama
Length Overall	45.50 m
Length BP	44.00 m
Breadth Moulded	11.60 m
Depth Moulded	5.00 m
Draft (max)	4.50 m
Freeboard (SLL)	0.50 m
Class	BV
Notation	I x Hull x Mach, Tug ; Special Service Offshore Support Vessel, Unrestricted navigation
GRT/ NRT	723.00 T / 217.00 T
Deadweight	592.86 T
Bollard Pull	48.00 T

DECK PARTICULARS

Clear Deck Area	140.20 m ²
Deck Carrying Load	100.00 T
Deck Strength	5.00 T/m ²

PERFORMANCE

Maximum Speed	12 Knots
---------------	----------

PROPULSION SYSTEM

Main Engines	2 x Yanmar Z280A-EN, 2000 BHP @ 720 RPM, Total 4000 BHP
Auxiliary Engines	2 x Cummins NTA 855D(M), 275 kW
Emergency Generator	1 x Cummins, 50 kW @ 1500 RPM
Bow Thruster	Ulstein, 6 T Thrust
Stern Thruster	Nil
Propellers	2 x Kamome CPP
Steering Gear System	2 x Jastram Engineering
Rudder	2 x Jastram Engineering

TANK CAPACITIES

Fuel Oil	450.00 m ³
Fresh Water	250.00 m ³
Drill Water	Nil
Bilge	Nil
Ballast Water	56.50 m ³

CARGO DISCHARGE CAPACITIES

Fuel Oil Pump	50 m ³ /hr x 40 m head
Fresh Water Pump	50 m ³ /hr
Drill Water Pump	Nil
Bilge Pump	50 m ³ /hr x 60 m head



DECK EQUIPMENT

Anchors & Chain	2 x 785 kg Stockless Anchor
Tugger Winch	2 x 5 T Pull 15 m/min
Capstan	2 x 5 T Pull 15 m/min
Anchor Windlass c/w Bow	Plimsoll Hydraulic 3.8 T x 10 m/min
A Frame	1 Unit

ANCHOR HANDLING & TOWING EQUIPMENT

Towing Winch	Double Drum Heavy Duty SWL 145 T
AH/Towing Drum Capacity	1200 m (L) x 60 mm (Dia)
Spare Reel Drum Capacity	1200 m (L) x 60 mm (Dia)
Line Pull @ First Layer	50 T @ 10 m/min
Brake Holding	130 T
Towing Pin	SWL 100 T
Shark Jaw	SWL 250 T, Ulstein
Stern Roller	3.5 m (L) x 1.5 m (Dia)

ACCOMMODATION

Berths	4 x 1, 4 x 2, 3 x 4 Berths
Total Pax	24

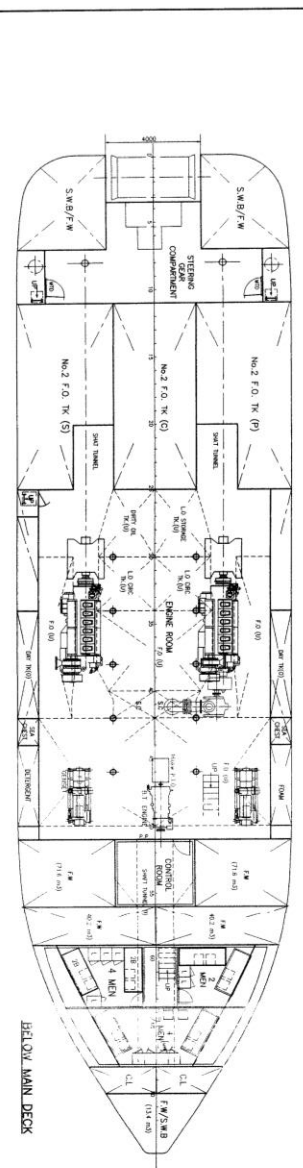
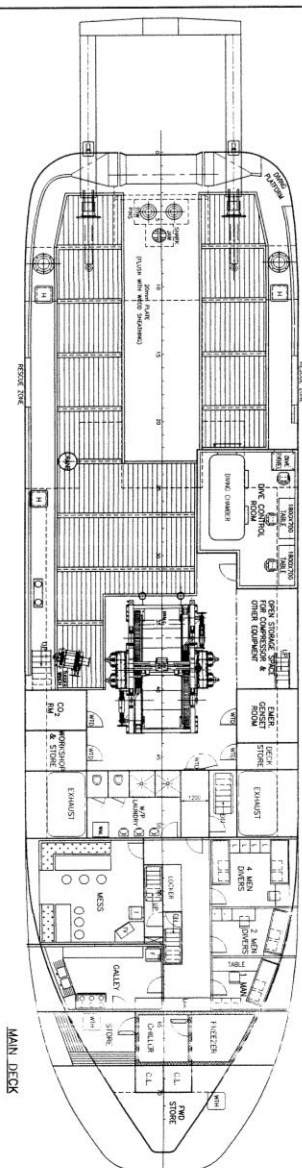
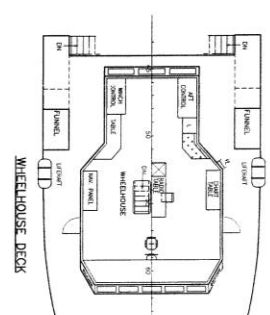
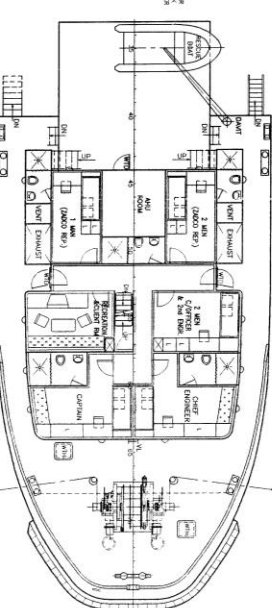
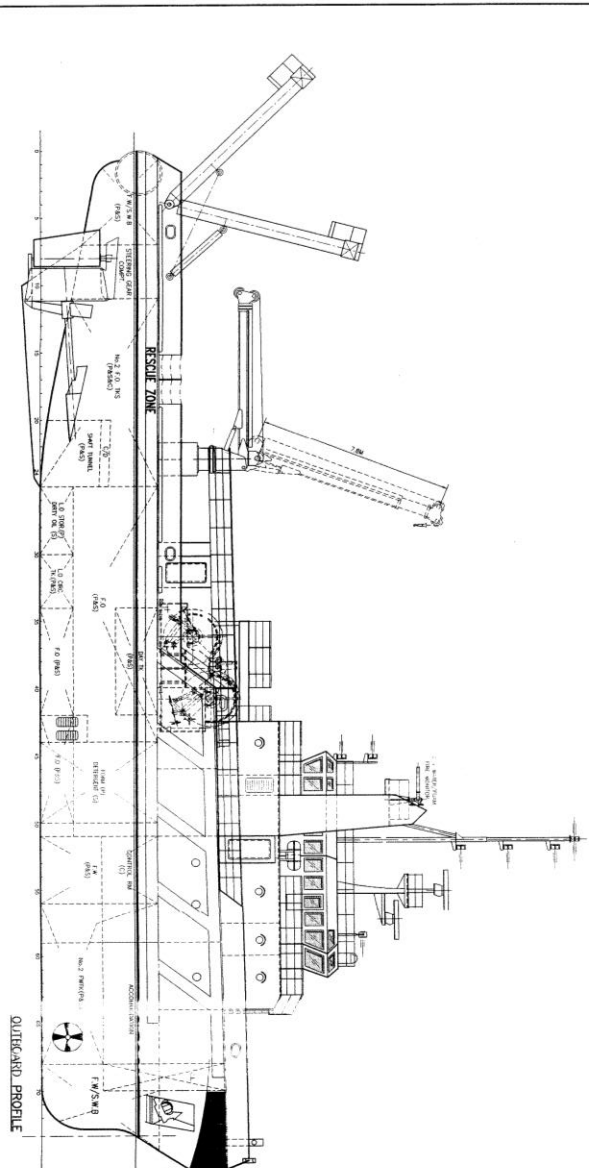
EXTERNAL FIRE-FIGHTING EQUIPMENT

Fi-Fi Notation	1/2 Fi-Fi Monitor, Kvaerner
Fi-Fi Monitors	2 x 1200 m ³ /hr, 125 m Throw length
Fi-Fi Pump	2 x 1500 m ³ /hr

LIFE-SAVING EQUIPMENT

Life Rafts	4 x 25 Men, SOLAS Compliant
Rescue Boat c/w Davit	1 x 6 Men, 27 HP of Outboard Eng, 20 L, SOLAS Compliant

Particulars are believed to be correct but not guaranteed. Owners reserve the rights to amend the specifications without notifications. Particulars are entirely without warranty as to correctness and interested parties must inspect vessel's certificates, drawings or physical inspection of vessel.



NOT REVIEWED
 1 DEC 2006
 ASS Engineers

STRT'S

PRINCIPAL PARTICULARS

LENGTH O.A. 45.50m
 LENGTH WL 44.00m
 BEAM MLD. 11.60m
 DEPTH MLD. 5.00m
 DRAFT DESIGNED 3.50m
 COMPLEMENT 28 MEN
 M.D.O 450 m³ (approx.)
 F.W. 250 m³ (approx.)

17 NOV 2013

THIS DRAWING AND THE INFORMATION CONTAINED THEREIN ARE THE PROPERTY OF CONNAN WU & ASSOCIATES. IT IS TO BE USED ONLY FOR THE PROJECT AND VESSEL IDENTIFIED HEREIN. IT IS NOT TO BE REPRODUCED, COPIED, OR TRANSMITTED IN ANY FORM OR BY ANY MEANS, WITHOUT THE WRITTEN PERMISSION OF CONNAN WU & ASSOCIATES.

NO.	DATE	DESCRIPTION	BY	CHKD
1	17/11/13	ISSUED FOR CONSTRUCTION	AW	AW
2	17/11/13	ISSUED FOR CONSTRUCTION	AW	AW
3	17/11/13	ISSUED FOR CONSTRUCTION	AW	AW
4	17/11/13	ISSUED FOR CONSTRUCTION	AW	AW
5	17/11/13	ISSUED FOR CONSTRUCTION	AW	AW
6	17/11/13	ISSUED FOR CONSTRUCTION	AW	AW
7	17/11/13	ISSUED FOR CONSTRUCTION	AW	AW
8	17/11/13	ISSUED FOR CONSTRUCTION	AW	AW
9	17/11/13	ISSUED FOR CONSTRUCTION	AW	AW
10	17/11/13	ISSUED FOR CONSTRUCTION	AW	AW
11	17/11/13	ISSUED FOR CONSTRUCTION	AW	AW
12	17/11/13	ISSUED FOR CONSTRUCTION	AW	AW
13	17/11/13	ISSUED FOR CONSTRUCTION	AW	AW
14	17/11/13	ISSUED FOR CONSTRUCTION	AW	AW
15	17/11/13	ISSUED FOR CONSTRUCTION	AW	AW
16	17/11/13	ISSUED FOR CONSTRUCTION	AW	AW
17	17/11/13	ISSUED FOR CONSTRUCTION	AW	AW
18	17/11/13	ISSUED FOR CONSTRUCTION	AW	AW
19	17/11/13	ISSUED FOR CONSTRUCTION	AW	AW
20	17/11/13	ISSUED FOR CONSTRUCTION	AW	AW
21	17/11/13	ISSUED FOR CONSTRUCTION	AW	AW
22	17/11/13	ISSUED FOR CONSTRUCTION	AW	AW
23	17/11/13	ISSUED FOR CONSTRUCTION	AW	AW
24	17/11/13	ISSUED FOR CONSTRUCTION	AW	AW
25	17/11/13	ISSUED FOR CONSTRUCTION	AW	AW
26	17/11/13	ISSUED FOR CONSTRUCTION	AW	AW
27	17/11/13	ISSUED FOR CONSTRUCTION	AW	AW
28	17/11/13	ISSUED FOR CONSTRUCTION	AW	AW
29	17/11/13	ISSUED FOR CONSTRUCTION	AW	AW
30	17/11/13	ISSUED FOR CONSTRUCTION	AW	AW
31	17/11/13	ISSUED FOR CONSTRUCTION	AW	AW
32	17/11/13	ISSUED FOR CONSTRUCTION	AW	AW
33	17/11/13	ISSUED FOR CONSTRUCTION	AW	AW
34	17/11/13	ISSUED FOR CONSTRUCTION	AW	AW
35	17/11/13	ISSUED FOR CONSTRUCTION	AW	AW
36	17/11/13	ISSUED FOR CONSTRUCTION	AW	AW
37	17/11/13	ISSUED FOR CONSTRUCTION	AW	AW
38	17/11/13	ISSUED FOR CONSTRUCTION	AW	AW
39	17/11/13	ISSUED FOR CONSTRUCTION	AW	AW
40	17/11/13	ISSUED FOR CONSTRUCTION	AW	AW
41	17/11/13	ISSUED FOR CONSTRUCTION	AW	AW
42	17/11/13	ISSUED FOR CONSTRUCTION	AW	AW
43	17/11/13	ISSUED FOR CONSTRUCTION	AW	AW
44	17/11/13	ISSUED FOR CONSTRUCTION	AW	AW
45	17/11/13	ISSUED FOR CONSTRUCTION	AW	AW
46	17/11/13	ISSUED FOR CONSTRUCTION	AW	AW
47	17/11/13	ISSUED FOR CONSTRUCTION	AW	AW
48	17/11/13	ISSUED FOR CONSTRUCTION	AW	AW
49	17/11/13	ISSUED FOR CONSTRUCTION	AW	AW
50	17/11/13	ISSUED FOR CONSTRUCTION	AW	AW
51	17/11/13	ISSUED FOR CONSTRUCTION	AW	AW
52	17/11/13	ISSUED FOR CONSTRUCTION	AW	AW
53	17/11/13	ISSUED FOR CONSTRUCTION	AW	AW
54	17/11/13	ISSUED FOR CONSTRUCTION	AW	AW
55	17/11/13	ISSUED FOR CONSTRUCTION	AW	AW
56	17/11/13	ISSUED FOR CONSTRUCTION	AW	AW
57	17/11/13	ISSUED FOR CONSTRUCTION	AW	AW
58	17/11/13	ISSUED FOR CONSTRUCTION	AW	AW
59	17/11/13	ISSUED FOR CONSTRUCTION	AW	AW
60	17/11/13	ISSUED FOR CONSTRUCTION	AW	AW
61	17/11/13	ISSUED FOR CONSTRUCTION	AW	AW
62	17/11/13	ISSUED FOR CONSTRUCTION	AW	AW
63	17/11/13	ISSUED FOR CONSTRUCTION	AW	AW
64	17/11/13	ISSUED FOR CONSTRUCTION	AW	AW
65	17/11/13	ISSUED FOR CONSTRUCTION	AW	AW
66	17/11/13	ISSUED FOR CONSTRUCTION	AW	AW
67	17/11/13	ISSUED FOR CONSTRUCTION	AW	AW
68	17/11/13	ISSUED FOR CONSTRUCTION	AW	AW
69	17/11/13	ISSUED FOR CONSTRUCTION	AW	AW
70	17/11/13	ISSUED FOR CONSTRUCTION	AW	AW
71	17/11/13	ISSUED FOR CONSTRUCTION	AW	AW
72	17/11/13	ISSUED FOR CONSTRUCTION	AW	AW
73	17/11/13	ISSUED FOR CONSTRUCTION	AW	AW
74	17/11/13	ISSUED FOR CONSTRUCTION	AW	AW
75	17/11/13	ISSUED FOR CONSTRUCTION	AW	AW
76	17/11/13	ISSUED FOR CONSTRUCTION	AW	AW
77	17/11/13	ISSUED FOR CONSTRUCTION	AW	AW
78	17/11/13	ISSUED FOR CONSTRUCTION	AW	AW
79	17/11/13	ISSUED FOR CONSTRUCTION	AW	AW
80	17/11/13	ISSUED FOR CONSTRUCTION	AW	AW
81	17/11/13	ISSUED FOR CONSTRUCTION	AW	AW
82	17/11/13	ISSUED FOR CONSTRUCTION	AW	AW
83	17/11/13	ISSUED FOR CONSTRUCTION	AW	AW
84	17/11/13	ISSUED FOR CONSTRUCTION	AW	AW
85	17/11/13	ISSUED FOR CONSTRUCTION	AW	AW
86	17/11/13	ISSUED FOR CONSTRUCTION	AW	AW
87	17/11/13	ISSUED FOR CONSTRUCTION	AW	AW
88	17/11/13	ISSUED FOR CONSTRUCTION	AW	AW
89	17/11/13	ISSUED FOR CONSTRUCTION	AW	AW
90	17/11/13	ISSUED FOR CONSTRUCTION	AW	AW
91	17/11/13	ISSUED FOR CONSTRUCTION	AW	AW
92	17/11/13	ISSUED FOR CONSTRUCTION	AW	AW
93	17/11/13	ISSUED FOR CONSTRUCTION	AW	AW
94	17/11/13	ISSUED FOR CONSTRUCTION	AW	AW
95	17/11/13	ISSUED FOR CONSTRUCTION	AW	AW
96	17/11/13	ISSUED FOR CONSTRUCTION	AW	AW
97	17/11/13	ISSUED FOR CONSTRUCTION	AW	AW
98	17/11/13	ISSUED FOR CONSTRUCTION	AW	AW
99	17/11/13	ISSUED FOR CONSTRUCTION	AW	AW
100	17/11/13	ISSUED FOR CONSTRUCTION	AW	AW

CONNAN WU & ASSOCIATES
 1:100 C2000/0-1 H

