

MEO RANGER

DP2 / PSV

PRINCIPAL PARTICULARS

Year Built	2013
Place Built	PT Loh & Loh Construction, Indonesia
Design	Focal Marine and Offshore
Flag	Panama
Length Overall	64.00 m
Length BP	57.60 m
Breadth Moulded	16.00 m
Depth Moulded	6.50 m
Draft (max)	5.39 m
Freeboard (SLL)	1125 mm
Class	BV
Notation	1 x HULL, MACH, Supply, FiFi 1, Sp Svc Stby Res LHNS WS, Unres Nav, Dynapos AM/AT R
GRT/ NRT	2300.00 T / 690.00 T
Deadweight	2304.85 T
Bollard Pull	Nil

DECK PARTICULARS

Clear Deck Area	443.52 m ²
Deck Carrying Load	600.00 T
Deck Strength	7.5 T/m ²

PERFORMANCE

Maximum Speed	13.5 Knots
Economic Speed	11 Knots

PROPULSION SYSTEM

Main Engines	2 x Niigata 6L28HX, 2500 BHP, 1838 kW, 750 RPM, Total 5000 BHP
Auxiliary Engines	3 x Baudouin 8M26.2, 473 kW @ 1500 RPM
Emergency Generator	Baudouin, 90 kW @ 1500 RPM
Shaft Generator	2 x Leroy Somer LSAM 50.2, 900 kW @ 1500 RPM
ROV Generator	Nil
Air Compressor	2 x Sperre HL2/77, 25 m ³ /hr, 30 bar max/pr
Bow Thruster	2 x NCG NCT165, 10 T Thrust
Stern Thruster	Nil
Propellers	2 x Niigata Z-pellers ZP-41CP
Steering Gear System	2 x Niigata Z-pellers ZP-41CP
Rudder	Nil

TANK CAPACITIES

Fuel Oil	588.636 m ³
Fresh Water	457.90 m ³
Drill Water	614.40 m ³
Liquid Mud	416.30 m ³
Brine	416.30 m ³
Bilge	10.866 m ³
Ballast Water	614.40 m ³
Methanol	85.52 m ³
Dry bulk	170.00 m ³ , 4 x 42.5m ³ per Tank



CARGO DISCHARGE CAPACITIES

Fuel Oil Pump	80 m ³ /hr @ 60 m head, Desmi NSL80-265
Fresh Water Pump	80 m ³ /hr @ 60 m head, Itur ILNC50-200B
Drill Water Pump	80 m ³ /hr @ 60 m head, Itur ILNC50-200B
Liquid Mud Pump	2 x 70 m ³ /hr @ 60 m head, Magnum 4x3x1
Brine Pump	2 x 70 m ³ /hr @ 60 m head, Magnum 4x3x1
Bilge/Ballast/Fire/GS	2 x 80 m ³ /hr @ 30 m head, Itur ILN040/160B
Methanol	2 x 25 m ³ /hr @ 60 m head, Parson Deep Weel Centrifugal
Dry Bulk Compressor	2 x 13 m ³ /min, Unslip, Airman, 5.6bar/6.5bar Pressure

DP SYSTEM

DP2, Navis 4000, 2 DPGS, Fanbeam, 2 Anemometers, 2 Motion Sensors, Independent Joystick, Taut Wire SMT TW-1.0 system 300 m depth

DECK EQUIPMENT

Anchors & Chain	2 x HHP Stockless Anchor, 1760 kg
Tugger Winch	2 x 5T Electro Hydraulic Vertical Capstan
Capstan	2 x 5T Electro Hydraulic Vertical Capstan
Anchor Windlass c/w Bow	2 x Electro Hydraulic 9.4T @ 9 m/min
Crane No. 1	SWL 3 T @ 13 m radius (max SWL) SWL 3 T @ 13 m radius (max Radius)
Crane No. 2	Nil
A Frame	Nil
Mezzanine Deck	Nil
Moon Pool	Nil

ACCOMMODATION

Berths	4 x 1, 6 x 2, 11 x 4 Berths
Total Pax	60

EXTERNAL FIRE-FIGHTING EQUIPMENT

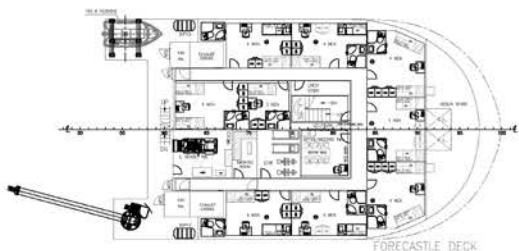
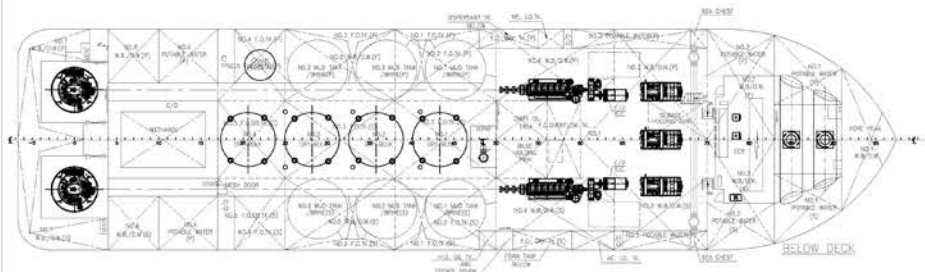
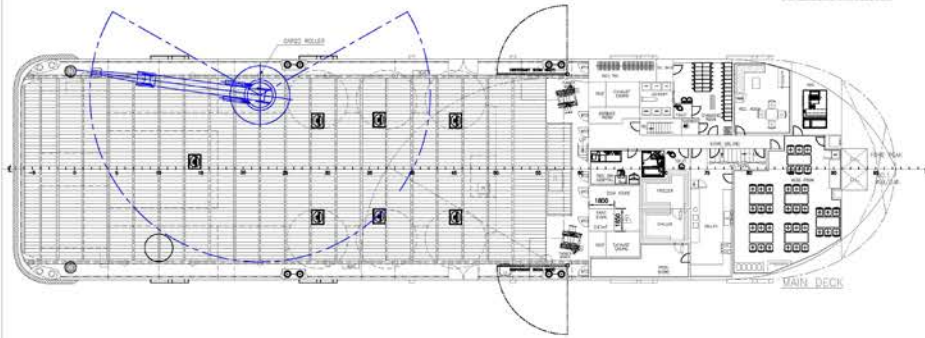
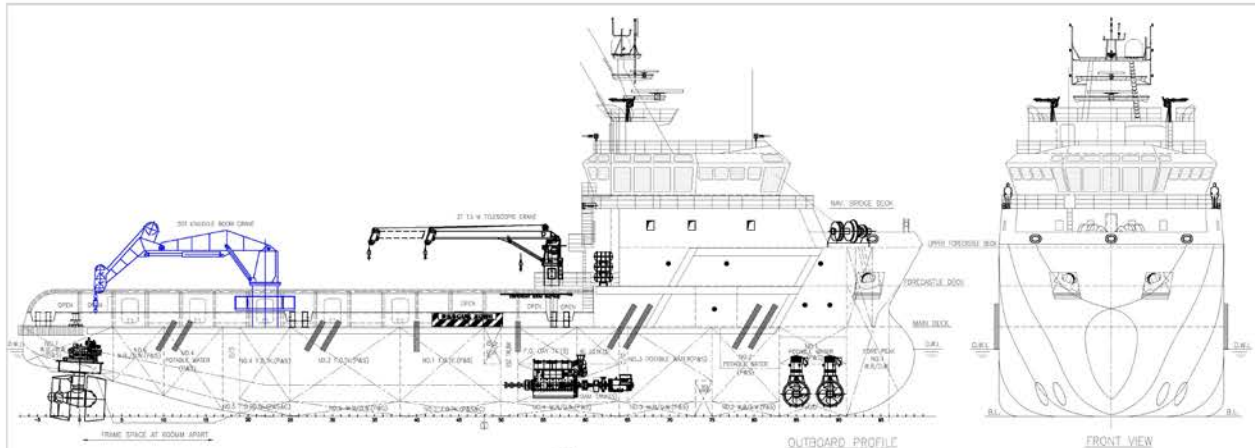
Fi-Fi Notation	1 x Hull x Mach, Supply Vsl FiFi Ship 1, Special Svc, Standby Rescue, LHNS-WS, Unrest'd Nav
Fi-Fi Monitors	2 x 1650 m ³ /h Capacity, 140 m Throw Length
Fi-Fi Pump	2 x 1650 m ³ /hr

LIFE-SAVING EQUIPMENT

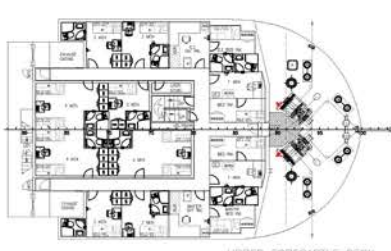
Life Rafts	8 x 25 men, SOLAS compliant
Rescue Boat c/w Davit	1 x 6 men, Inboard Eng, 50 L Fuel, SOLAS Compliant
Fast Rescue Craft	Nil

DIVING & ROV SYSTEMS

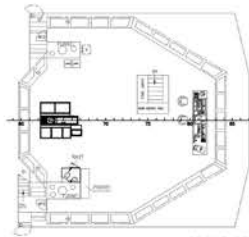
Diving System	Nil
Air Diving System	Optional, installed as required
Work Class/Other ROV	Can be fitted with ROV



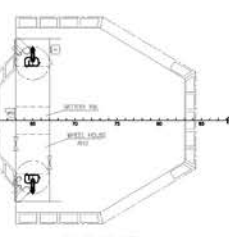
FORECASTLE DECK
(34 MEN)



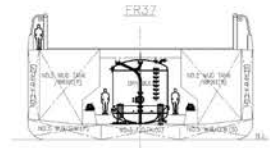
UPPER FORECASTLE DECK
(26 MEN)



NAV. BRIDGE DECK



COMPASS DECK



PRINCIPAL PARTICULARS

LENGTH OA	64.00 M
LENGTH BP	57.60 M
BEAM MLD.	18.00 M
DEPTH MLD.	8.50 M
DRAFT DESIGNED	4.90 M
DRAFT SHANTLING	5.40 M
COMPLEMENT	60 MEN
MAIN ENGINE	2 x 2,575 BHP
TRIAL SPEED	13 KTS

APPROXIMATE CARGO CAPACITIES

DEADWEIGHT	2,000 T
CARGO BK. AREA	500 M ² @ 7.5T/M ²
DECK CARGO	600 T
FUEL OIL	585 M ³
WB/DW	600 M ³
POTABLE WATER	300 M ³
MUD/BRINE	350 M ³
CEMENT	170 M ³
METHANOL	80 M ³

DESCRIPTION	REV	DRN BY	CHK BY	DATE
CLIENT				
MICLYN EXPRESS OFFSHORE				
		TITLE GENERAL ARRANGEMENT PLAN		
		SHIP NAME MEO RANGER		
CONTRACT NO.	DRAWING NO.		REV.	
DATE	LDR	SCALE	1:175	
DRAWN	DCP	SHEET NO.	1 OF 1	
DESIGNED	DCP	RIS	A1	
APPROVED	EJEN TAN	DATE	5 AUG 2016	

○ REVISED
 ● NEW
 ○ REVISION 1 - 100%
 ○ REVISED 1 - 100%
 ○ REVISED 2 - 100%
 ○ REVISED 3 - 100%
 ○ REVISED 4 - 100%
 ○ REVISED 5 - 100%

THIS DOCUMENT AND THE CONTENTS ARE COPYRIGHT AND REMAIN PROPERTY OF MEO MARINE & OFFSHORE. THEY MUST NOT BE COPIED IN WHOLE OR IN PART OR ANY PART THEREOF FOR ANY PURPOSE WITHOUT THE WRITTEN PERMISSION FROM MEO MARINE & OFFSHORE. THE USER OF THIS DOCUMENT ACCEPTS RESPONSIBILITY OF THE CONSTRUCTION.