

SAMSON VI

Multicat / 30T Bollard Pull

GENERAL

Year Built	2008
Built at	Astilleros Armada, Vigo
Country	Spain
Classification	GLC + Tug - Unrestricted Navigation
Port of Registry	Panama
Flag	Panama
Official Number	859754
Call Sign	HP 5018

PERFORMANCE

Speed	6 knots Maximum
	5 knots Economical
Bollard Pull	30T

DIMENSIONS

Length Overall	24.99m
Breadth	11.50m
Depth	3.50m
Maximum Draft	2.5m
Gross Tonnage	248.58T

MISCELLANEOUS

Moonpool	Ø1,000mm
	Deck container fittings for 20' container

ACCOMMODATION

Cabins	3 cabins
Type	Double
Maximum Crew	6 persons
*Galley, sanitary facilities, air conditioning (heat & cold)	

DECK EQUIPMENT

Deck Crane 1	Heila HLRM 170T/4s, 10T at 14m
Deck Crane 2	Heila HLRM 90T/4s, 6.4T at 12.62m
Towing Winch	500m x Ø35mm, 30T pull
Anchor Handling Winch	100m x Ø50mm, 80T pull
Capstan	2 x 15T
Tugger Winch	15T Hydraulic
Shark Jaws	For 3" Chain Max
Bow Roller	For a work load of 80T, 5.40m x Ø1.20m (160T S.W.L.)
Stern Roller	For a work load of 30T, 1.50m x Ø0.70m (60T S.W.L.)
Spud Fittings	2 x Ø550mm
*Pre-installation for 4 point mooring	
*Deck floor fully covered with interchangeable wooden inserts	



NAVIGATIONAL EQUIPMENT

2 x Radar Systems	1 x 12KW Furuno - range 72m
	1 x 6KW Furuno - range 48m
Compass	Furuno triple-reciever system
Echo Sounder	Furuno FE-700, IMO std - range 800m
Reciever DGPS	Furuno-37, WAAS incorporated
Reciever DGPS	Furuno-90, IMO std
Autopilot	Robertson AP-50
Navtex	Furuno NX-700A
VHF Radio Phones	2 x Sailor RT-5022, DSC, A Class
GMDSS Portable VHF Radio Phones	2 x Sailor SO-3520
Chart Plotter	Furuno Nav Net
Inmarsat Mini C GMDSS	TT-3000E Navigation area A1/A2
Navigation Software	Navigator Plus. MEXSEA
Anemometer	Walker, wind speed and direction
AIS	Transmitter & Reciever

PROPULSION (3 FIXED PITCH PROPELLERS)

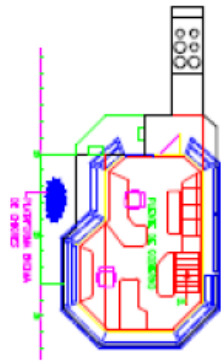
Main Engines	3 x Vector 750 / 816 BHP
Total Output	2,448 BHP
Gearboxes	Hydraulically Driven
Bowthrusters	Hydraulically Driven, 250 BHP, 360° Water Jet Propulsion

AUXILIARIES

Diesel Generator	1 x Iveco 520 BHP at 2000rpm for hydraulics, 1 x emergency electro hydraulic group 70cv
Generators	2 x Iveco 100kW, 50 Hz 230/400V, 1500rpm
Port Generator	1 x Iveco 20kVa
Transfer Pumps	1 x 60m ³ /h MDO/ 1 x 60m ³ /h FW

TANK CAPACITIES

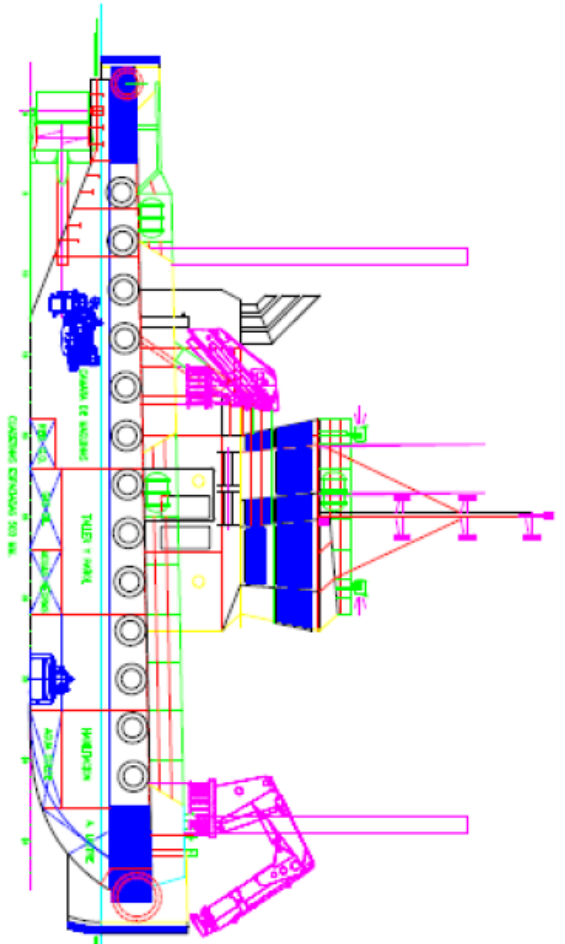
Fuel Oil	121.015m ³
Fresh Water	68.041m ³
Lube Oil	3.446m ³
Hydraulic Oil	6.000m ³
Dirty Oil	2.352m ³
Slop Tank	2.352m ³
Black Water	10.780m ³
Ballast Water	79.941m ³



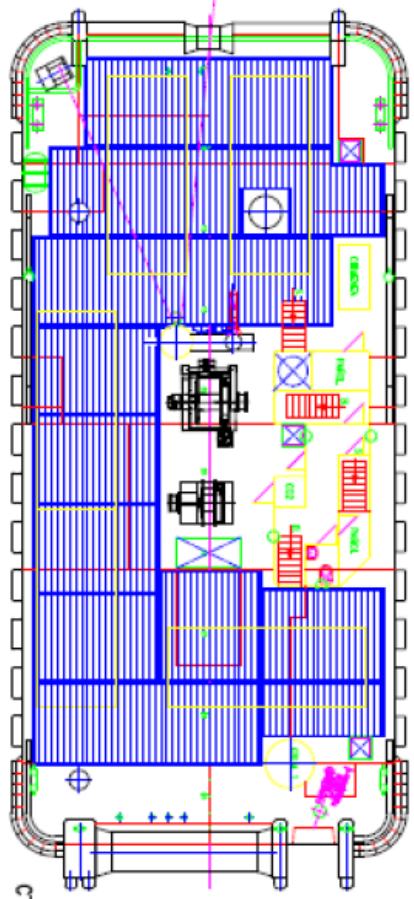
CTA, PUENTE



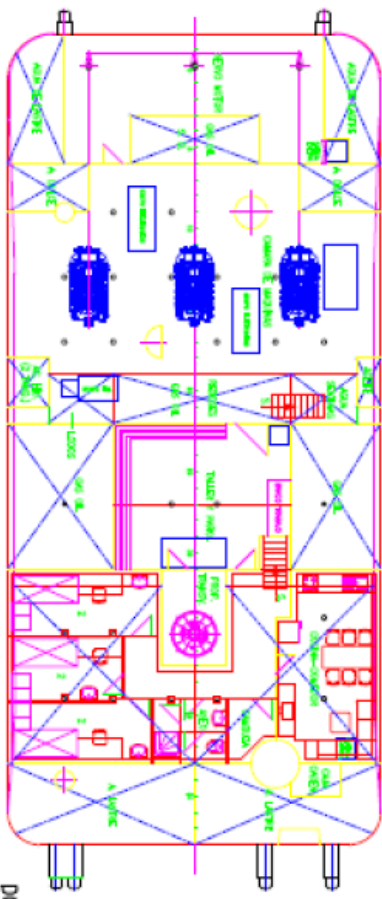
CTA, PUENTE BAJO



SECCION TRANSVERSAL



CTA, PRINCIPAL



DOBLE FONDO

CARACTERISTICAS

- ESTRUKA TOTAL: 24.00 M.
- ESTRUKA PRINCIPAL: 23.00 M.
- ESTRUKA BOTE (ENCUENTRADO): 23.00 M.
- ANCHO LE TRONCO: 11.50 M.
- ANCHO LE TRONCO: 10.00 M.
- ANCHO LE TRONCO: 2.00 M.

		RESUMEN	
PROYECTO:	CLIENTE:	FECHA:	VERSION:
DESCRIPCION GENERAL:	PROYECTO:	FECHA:	VERSION:
PROYECTO:	CLIENTE:	FECHA:	VERSION:
PROYECTO:	CLIENTE:	FECHA:	VERSION: