



## AOS 8

Crewboat/ Utility Vessel

### PRINCIPAL PARTICULARS

Year Built	2004
Place Built	Marsun Shipyard, Thailand
Design	Marsun Co. Ltd
Flag	Panama
Length Overall	36.00 m
Length BP	30.60 m
Breadth Moulded	7.60 m
Depth Moulded	3.30 m
Draft (max)	1.20 m
Freeboard (SLL)	1.70 m
Class	BV
Notation	I, Hull, Mach, Special Service, Tropical Zone > 160 NM from port of refuge
GRT/NRT	161.00 T / 51.00 T
Deadweight	125.25 T

### DECK PARTICULARS

Clear Deck Area	87.00 m <sup>2</sup>
Deck Carrying Load	44.00 T
Deck Strength	2.00 T/m <sup>2</sup>

### PERFORMANCE

Maximum Speed	22 Knots @ 16.3 T/24 hrs
Economic Speed	19.5 Knots @ 11.5 MT/24 hrs

### PROPULSION SYSTEM

Main Engines	3 x Caterpillar 3412E, 2460 kW @ 2300 RPM, Total 3342 BHP
Auxiliary Engines	2 x 100 KVA, 80 kW @ 125 HP
Propellers	3 x Fixed Pitch 5-Blade Propellers
Steering Gear System	2 Units
Rudder	2 Units

### TANK CAPACITIES

Fuel Oil	50.00 m <sup>3</sup>
Fresh Water	20.00 m <sup>3</sup>

### ACCOMMODATION

Passenger Seats	86
Crew	4 x 2, 1 x 2 = 10



### EXTERNAL FIRE-FIGHTING EQUIPMENT

Fi-Fi Notation	Nil
Fi-Fi Monitors	1 x 1200 m <sup>3</sup> /hr @ 11 bar
Fi-Fi Pump	1 x 1200 m <sup>3</sup> /hr @ 11 bar
Oil Dispersant System	Nil

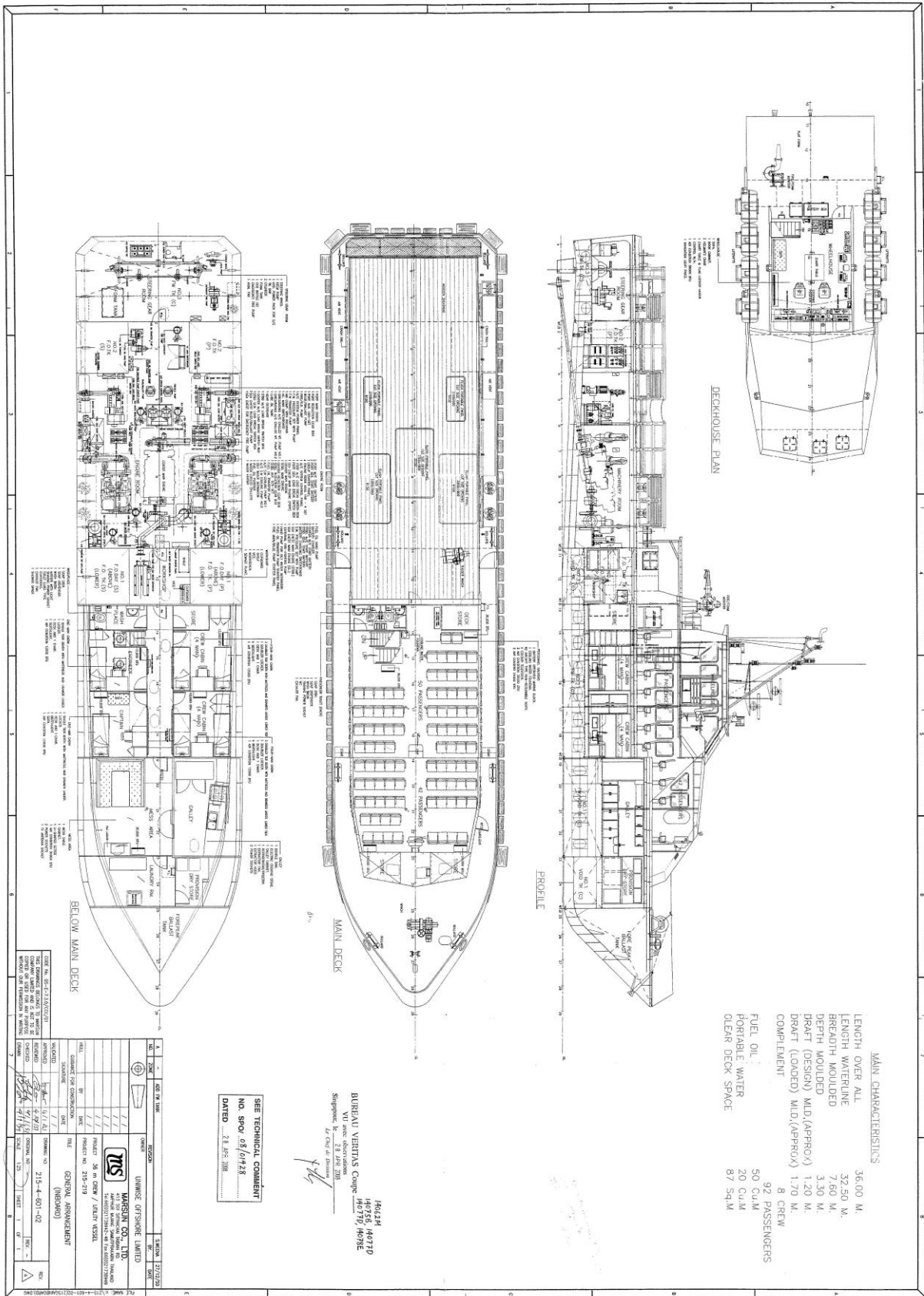
### INTERNAL FIRE-FIGHTING & ANTI-POLLUTION EQUIPMENT

Emergency Fire Pump	1 x 25 m <sup>3</sup> /hr @ 25 m head
CO2 Fi-Fi System	4 Units
Fire Detection & Alarm	Notifier AFP-200

### LIFE-SAVING EQUIPMENT

Life Rafts	8 x 25 men, SOLAS Compliant
------------	-----------------------------

Particulars are believed to be correct but not guaranteed. Owners reserve the rights to amend the specifications without notifications. Particulars are entirely without warranty as to correctness and interested parties must inspect vessel's certificates, drawings or physical inspection of vessel.



**MAIN CHARACTERISTICS**

LENGTH OVER ALL 36.00 M.  
 LENGTH WATERLINE 32.50 M.  
 BREADTH MOULDED 7.60 M.  
 DEPTH MOULDED 3.30 M.  
 DRAUGHT (DESIGN) MLD (APPROX) 1.20 M.  
 DRAUGHT (LOADED) MLD (APPROX) 1.70 M.  
 COMPLEMENT 8 CREW  
 92 PASSENGERS  
 FUEL OIL 50 CUM  
 PORTABLE WATER 20 CUM  
 CLEAR DECK SPACE 87 SQM

164241 162710  
 BUREAU VERITAS Group  
 160737, 160796  
 Singapore, 160737, 160796  
 28 Apr 2016

SEE TECHNICAL COMMENT  
 NO. SPV 08/0728  
 DATED 28 APR 2016

NO.	DATE	BY	DESCRIPTION
1	21/04/16	...	...
2	21/04/16	...	...
3	21/04/16	...	...
4	21/04/16	...	...
5	21/04/16	...	...
6	21/04/16	...	...
7	21/04/16	...	...
8	21/04/16	...	...
9	21/04/16	...	...
10	21/04/16	...	...

DESIGN NO. 215-4-601-02  
 PROJECT NO. 215-4-601-02  
 SHEET 1 OF 1

