



MICLYN CONSTRUCTOR 1

Accommodation & Work Barge

PRINCIPAL PARTICULARS

Year Built	2008
Place Built	PT Miclyn Shipbuilding, Indonesia
Design	Conan Wu & Associates
Flag	Malaysia
Length Overall	100.00 m
Length BP	100.00 m
Breadth Moulded	30.50 m
Depth Moulded	6.50 m
Draft (max)	4.50 m
Freeboard (SLL)	2.00 m
Class	BV
Notation	I, Hull, Special Service, Accomodation Barge - No Propulsion, Unrestricted Navigation
GRT/ NRT	8508.00 T / 2552.00 T
Deadweight	8857.70 T
Bollard Pull	Nil

DECK PARTICULARS

Clear Deck Area	1728.00 m ²
Deck Carrying Load	1800.00 T
Deck Strength	15.00 T/m ²

PROPULSION SYSTEM

Auxiliary Engines	4 x Cummins VTA28-D(M), 608 kW @ 1800 RPM
Emergency Generator	1 x Cummins KTA19-D(M), 335 kW @ 1800 RPM
Air Compressor	2 x Ingersoll Rand 830 CFM - 145 PSIG
FW Maker	50 T/day
Sewage Treatment Plant	Maker Holland Marine Service, Model II/140
AHU	3 x AHU (Serve for Control Deck, Accomodation Deck, Boat Deck & Main Deck)

TANK CAPACITIES

Fuel Oil	1055.10 m ³
Fresh Water	1747.90 m ³
Bilge	27.80 m ³
Ballast Water	6868.80 m ³

CARGO DISCHARGE CAPACITIES

Fuel Oil Pump	45 m ³ /hr @ 45 m head
Fresh Water Pump	30 m ³ /hr @ 35 m head
Bilge Pump	5 m ³ /hr @ 30 m head



DECK EQUIPMENT

Anchors & Chain	10 x 7 T Flipper Delta, 8 Length of 38 mm Dia x 1230m (6 x 36) IWRC RHRL Galvd Steel
Tugger Winch	2 x Ingersoll Rand FA7i, Capacity 7 T
Capstan	4 x Titan Electric Vertical Capstan 10 T @ 15 m/min
Mooring Anchor	8 x 7 T Delta Flipper Type
Mooring Winches	4 x Double Drum Amhoist AM77EF
Brake Holding	77 T
Spooling Capacity	1230 m
Buoys	13 pcs
Crane 1	SWL 68 T @ 15 m Radius (max SWL), SWL 46.1 T @ 26 m Radius (max Radius) w/ Man-Riding Capability
Crane 2	SWL 1.5 T @ 30 m Radius (max SWL), SWL 10 T @ 3.5 m Radius (max Radius)
Fairhead	8 x Universal Type

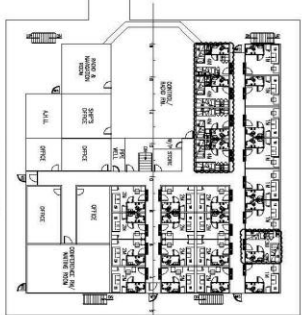
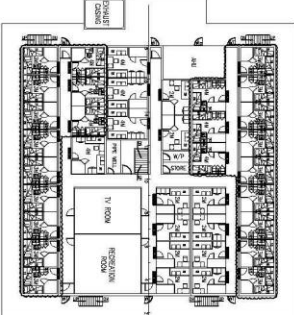
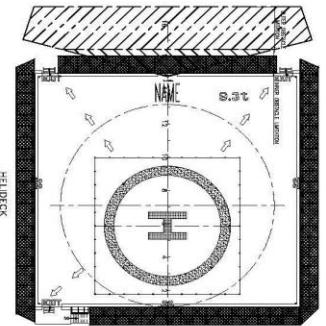
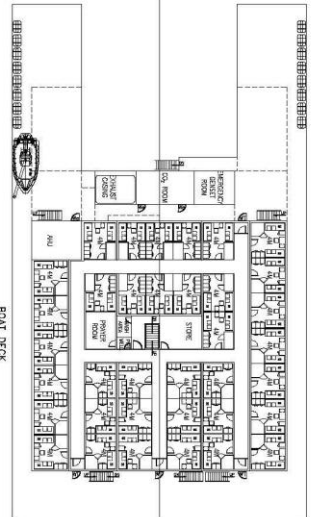
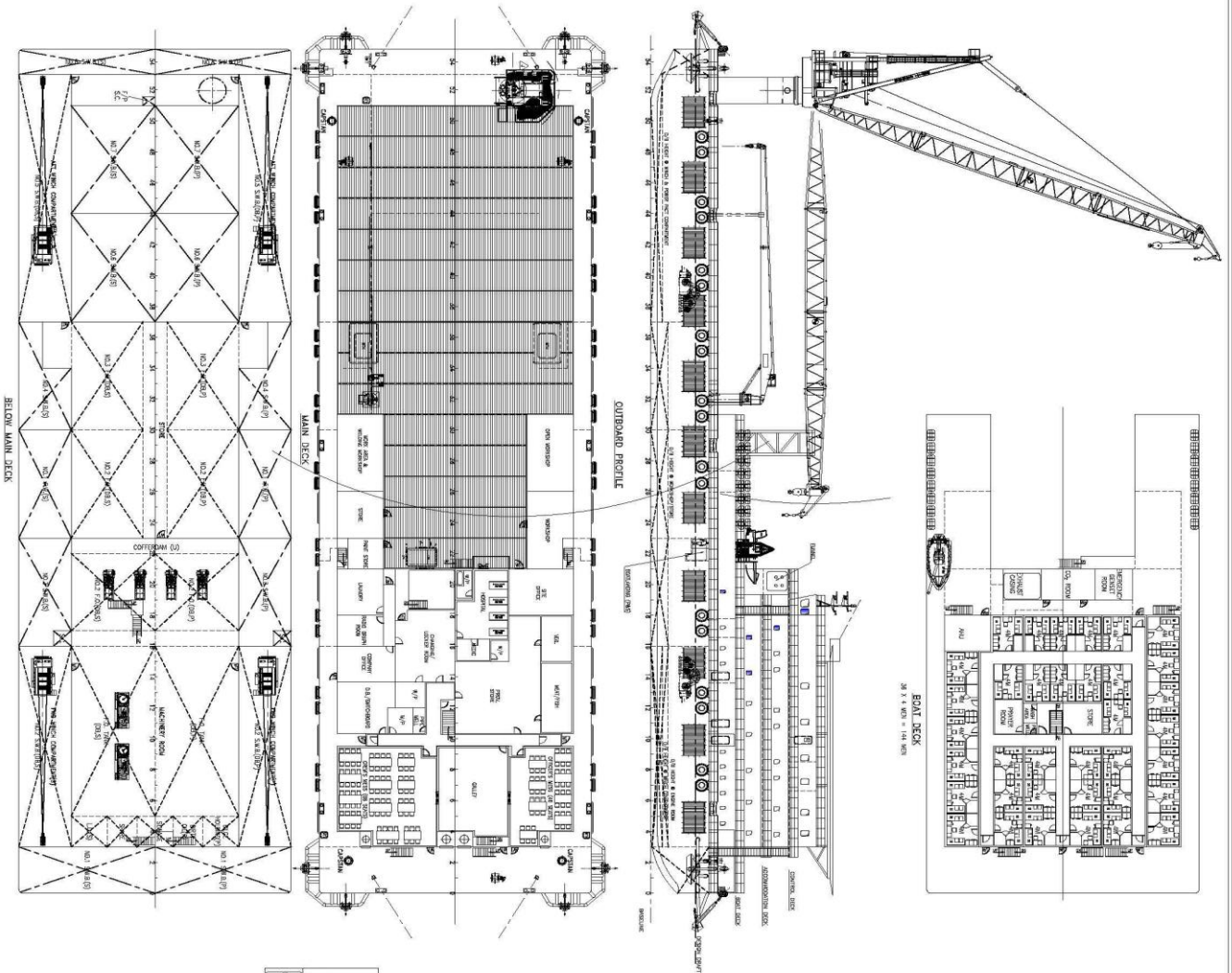
ACCOMMODATION

Berths	36 x 4, 18 x 3, 10 x 2, 10 x 4, 4 x 4, 1 x 3, 12 x 2, 7 x 1 Berths
Total Pax	308

LIFE-SAVING EQUIPMENT

Life Rafts	32 x 25, 7 x 20 Men, SOLAS Compliant
Rescue Boat c/w Davit	1 x 6 Men, 25 HP, 20 L

Particulars are believed to be correct but not guaranteed. Owners reserve the rights to amend the specifications without notifications. Particulars are entirely without warranty as to correctness and interested parties must inspect vessel's certificates, drawings or physical inspection of vessel.



PRINCIPAL PARTICULARS

LENGTH O.A.	100m (328ft)
BREAM M.D.	30.5m (100ft)
DEPTH M.D.	6.50m
MAXIMUM DRAFT	4.5m
DESIGN DRAFT	3.0m
COMPLEMENT	308 MEN
F.O.	1000 m ³ (approx.)
POTABLE WATER	1000 m ³ (approx.)
DRILL WATER	1000 m ³ (approx.)

MEO
MULTI-TERRITORY OFFSHORE

**GENERAL ARRANGEMENT PLAN
308 MEN COMPLEMENT
MILVYN CONSTRUCTOR 1**

NO. SHEET	4	ISSUE	01/01/2015
DATE AFTER SITE INSPECTION	3	ISSUE	01/02/2015
DATE 1st MAIN ROOM TO 31 NOV.	3	ISSUE	02/20/15
DESCRIPTION		REV	DATE

CLIENT: **MILVYN CONSTRUCTOR 1**

DESIGNER	DATE
CHECKED	
APPROVED	
DATE	30/04/2015

