



MICLYN POWER

4000 BHP / Multi-Purpose Tug / Utility Vessel

PRINCIPAL PARTICULARS

Year Built	1999
Place Built	Nam Cheong Yard, Malaysia
Design	-
Flag	Panama
Length Overall	45.50 m
Length BP	42.40 m
Breadth Moulded	11.60 m
Depth Moulded	5.00 m
Draft (max)	4.50 m
Freeboard (SLL)	0.51 m
Class	BV
Notation	1 x Hull x Mach, Tug ; Special Service Offshore Support Vessel, Unrestricted navigation
GRT/ NRT	723.00 T / 217.00 T
Deadweight	592.86 T
Bollard Pull	52.70 T

DECK PARTICULARS

Clear Deck Area	140.20 m ²
Deck Carrying Load	100.00 T
Deck Strength	5.00 T/m ²

PERFORMANCE

Maximum Speed	12 Knots @ 13.5 MT/24 hrs
---------------	---------------------------

PROPULSION SYSTEM

Main Engines	2 x Yanmar Z280A-EN, 2000 BHP @ 720 RPM, Total 4000 BHP
Auxiliary Engines	2 x Cummins NTA 855D(M), 275 kW
Emergency Generator	1 x Cummins, 50 kW @ 1500 RPM
Bow Thruster	1 x Ulstein, 5 T Thrust
Stern Thruster	Nil
Propellers	2 x Kamome CPP
Steering Gear System	2 x Jastram Engineering
Rudder	2 x Jastram Engineering

TANK CAPACITIES

Fuel Oil	382.00 m ³ (85%)
Fresh Water	208.00 m ³
Drill Water	Nil
Bilge	Nil
Ballast Water	55.20 m ³

CARGO DISCHARGE CAPACITIES

Fuel Oil Pump	50 m ³ /hr x 40 m head
Fresh Water Pump	50 m ³ /hr
Drill Water Pump	Nil
Bilge Pump	Nil



DECK EQUIPMENT

Anchors & Chain	2A/Flash Built Welded (Chain 275 meter)
Tugger Winch	1 x 5 T Pull 15 m/min
Capstan	2 x 5 T Pull 15 m/min
Anchor Windlass c/w Bow	Plimsoll Hydraulic 3.8 T x 10 m/min
A Frame	Nil

ANCHOR HANDLING & TOWING EQUIPMENT

Towing Winch	Plimsoll SWL 120 T, (Dia) 52mm X 1000m (L)
AH/Towing Drum Capacity	1000 m (L) x 52 mm (Dia)
Spare Reel Drum Capacity	1000 m (L) x 52 mm (Dia)
Line Pull @ First Layer	50 T @ 10 m/min
Brake Holding	130 T
Towing Pin	SWL 100 T
Shark Jaw	SWL 250 T, Ulstein
Stern Roller	3.5 m (L) x 1.5 m (Dia)

ACCOMMODATION

Berths	1 x 1, 2 x 2, 8 x 4 Berths
Total Pax	37

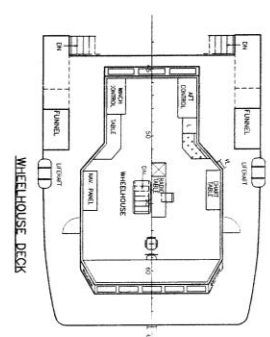
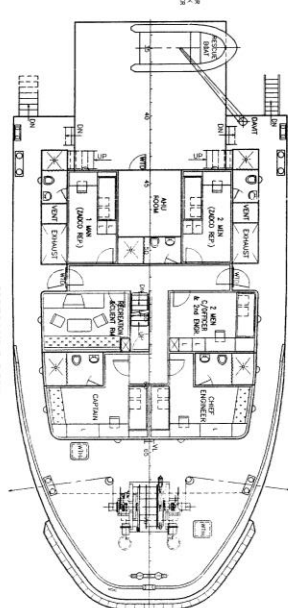
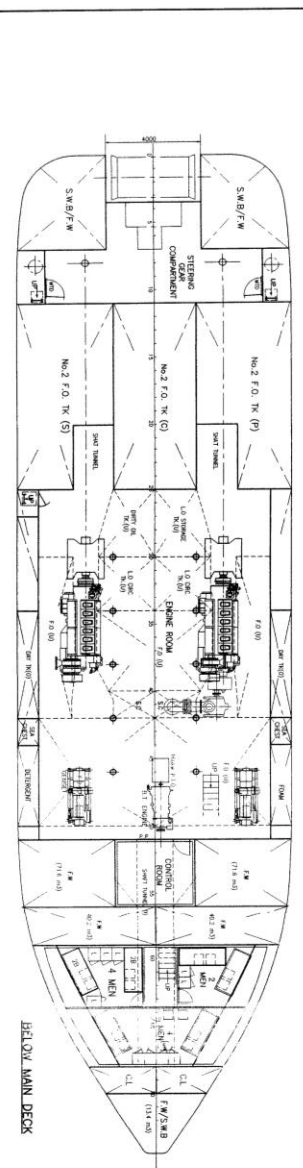
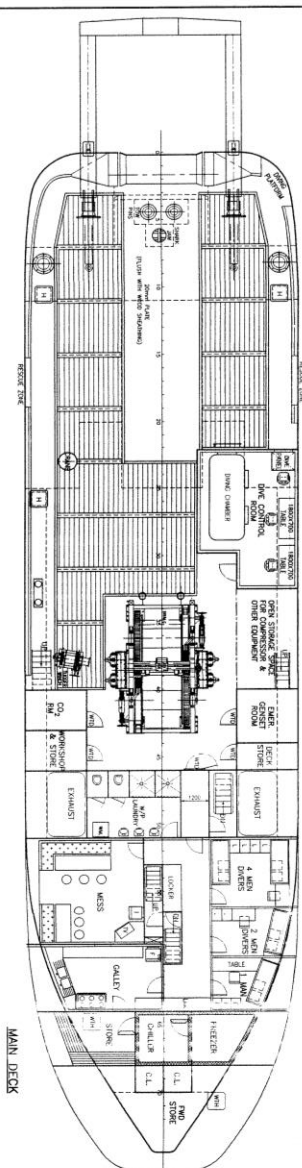
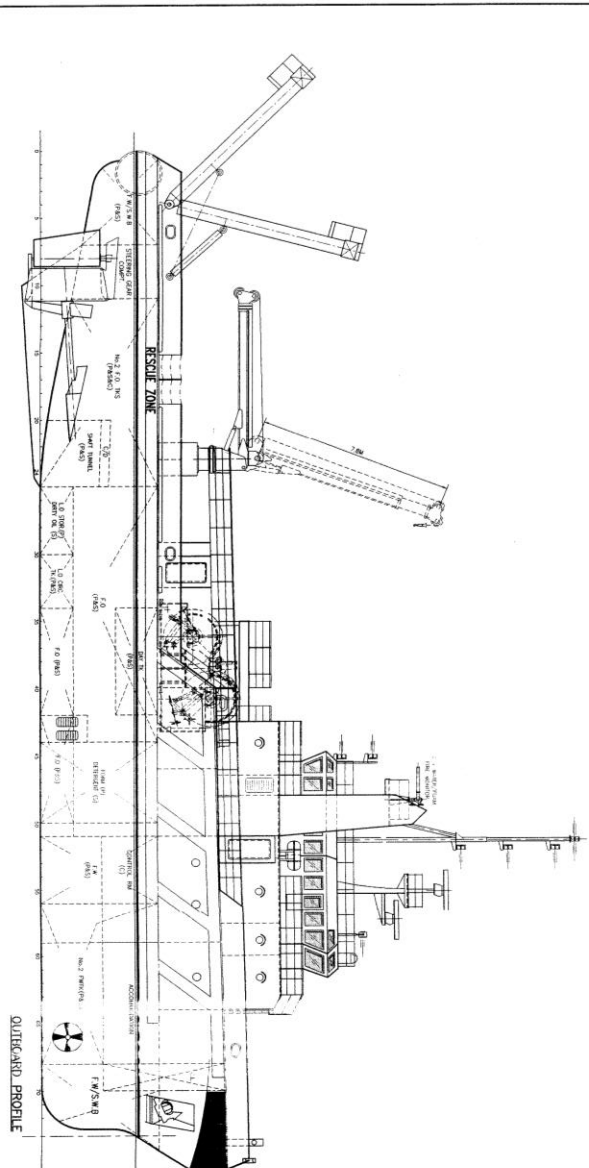
EXTERNAL FIRE-FIGHTING EQUIPMENT

Fi-Fi Notation	1/2 Fi-Fi Monitor, Kvaerner
Fi-Fi Monitors	1 x 1500 m ³ /hr
Fi-Fi Pump	1 x 1500 m ³ /hr

LIFE-SAVING EQUIPMENT

Life Rafts	4 x 25 Men, SOLAS Compliant
Rescue Boat c/w Davit	1 x 6 Men, 27 HP of Outboard Eng, 20 L, SOLAS Compliant

Particulars are believed to be correct but not guaranteed. Owners reserve the rights to amend the specifications without notifications. Particulars are entirely without warranty as to correctness and interested parties must inspect vessel's certificates, drawings or physical inspection of vessel.



NOT REVIEWED
 1 DEC 2008
 ASIS Singapore

PRINCIPAL PARTICULARS
 LENGTH O.A. 45.50m
 LENGTH WL 44.00m
 BEAM MLD. 11.60m
 DEPTH MLD. 5.00m
 DRAFT DESIGNED 3.50m
 COMPLEMENT 28 MEN
 M.D.O 450 m³ (approx.)
 F.W 250 m³ (approx.)

17 NOV 2013

THE DRAWING AND THE INFORMATION CONTAINED THEREIN ARE THE PROPERTY OF MEO GROUP. NO PART OF THIS DRAWING OR THE INFORMATION CONTAINED THEREIN MAY BE REPRODUCED OR TRANSMITTED IN ANY FORM OR BY ANY MEANS, ELECTRONIC OR MECHANICAL, INCLUDING PHOTOCOPYING, RECORDING, OR BY ANY INFORMATION STORAGE AND RETRIEVAL SYSTEM, WITHOUT THE WRITTEN PERMISSION OF MEO GROUP.

VD / Class # 9318 933

45.5m UTILITY VESSEL
 General Arrangement
 AISCOPY DESIGN

NO.	REVISION	DATE	BY	CHK	APP
1	ISSUED FOR CONSTRUCTION	17 NOV 2013
2
3
4
5
6
7
8
9
10
11
12
13
14
15
16
17
18
19
20
21
22
23
24
25
26
27
28
29
30
31
32
33
34
35
36
37
38
39
40
41
42
43
44
45
46
47
48
49
50
51
52
53
54
55
56
57
58
59
60
61
62
63
64
65
66
67
68
69
70
71
72
73
74
75
76
77
78
79
80
81
82
83
84
85
86
87
88
89
90
91
92
93
94
95
96
97
98
99
100

CONAN WU & ASSOCIATES
 1:100 C2800/3-1 H