



EXPRESS 60

Fast Utility Craft/ Crewboat

PRINCIPAL PARTICULARS

Year Built	2007
Place Built	Singapore, Penguin Shipyard
Design	FLEX 36
Flag	Panama
Length Overall	36.00 m
Length Waterline	32.50 m
Breadth Moulded	7.60 m
Depth Moulded	3.65 m
Draft (max)	1.88 m
Freeboard (SLL)	1.97 m
Class	BV
Notation	I, HULL MACH, Crewboat/ Cargo Utility Vessel Coastal Service
GRT/ NRT	239.00 T / 71.00 T
Deadweight	113.00 T

DECK PARTICULARS

Clear Deck Area	80.00 m ²
Deck Carrying Load	40.00 T
Deck Strength	2.00 T/m ²

PERFORMANCE

Maximum Speed	22 Knots @ 20 T DWT
Economic Speed	18 Knots @ 20 T DWT

PROPULSION SYSTEM

Main Engines	3 x Cummins x KTA 38 M2, 1350 BHP, 1900 RPM, Total 4050 BHP, 3022 kW
Auxiliary Engines	2 x Cummins 6BT5.9M, 91 kW @ 1500 RPM
Bow Thruster	75 kW Electro Hydraulic Bow Thruster
Propellers	3 x Fixed Pitch Propellers
Steering Gear System	2 x Duplex Electro Hydraulic Pump System
Rudder	2 Units

TANK CAPACITIES

Fuel Oil	55.00 m ³
Fresh Water	27.00 m ³

CARGO DISCHARGE CAPACITIES

Fuel Oil Pump	30 m ³ /hr @ 5 Bar
Fresh Water Pump	30 m ³ /hr @ 5 Bar
Bilge	25 m ³ /hr

DECK EQUIPMENT

Anchor Windlass c/w Bow	Leeson Electric - C 11 2T 17 FZ 22A - 5.5 HP / 4 Kw
-------------------------	---



ACCOMMODATION

Passenger Seats	84 Seats
Crew	2 x 1, 2 x 4 = 10 Berths

EXTERNAL FIRE-FIGHTING EQUIPMENT

Fi-Fi Notation	Equivalent to 1/4 FiFi
Fi-Fi Monitors	600 m ³ /hr, 130 m Throw Length
Fi-Fi Pump	600 m ³ /hr (GM12V-71T1 Engine)
Oil Dispersant System	Nil

INTERNAL FIRE-FIGHTING & ANTI-POLLUTION EQUIPMENT

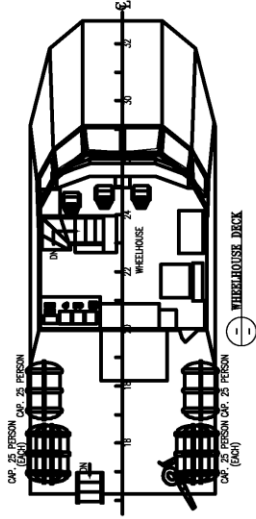
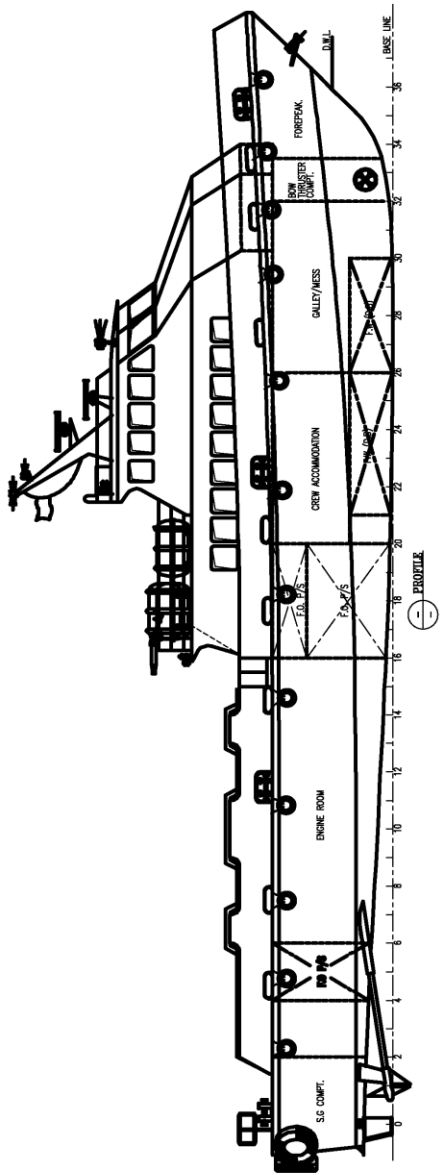
Emergency Fire Pump	50 m ³ /hr @ 30 m Head Ascue CA80/10-A
CO2 Fi-Fi System	Fixed CO2 System for Engine Room
Fire Detection & Alarm	Precept Fire Control Panel, Manufactured in the U.K.

LIFE-SAVING EQUIPMENT

Life Rafts	6 x 25 men, SOLAS Compliant
------------	-----------------------------

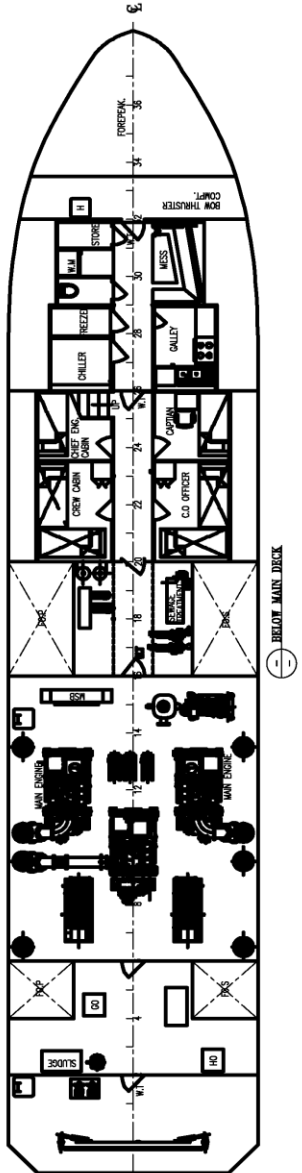
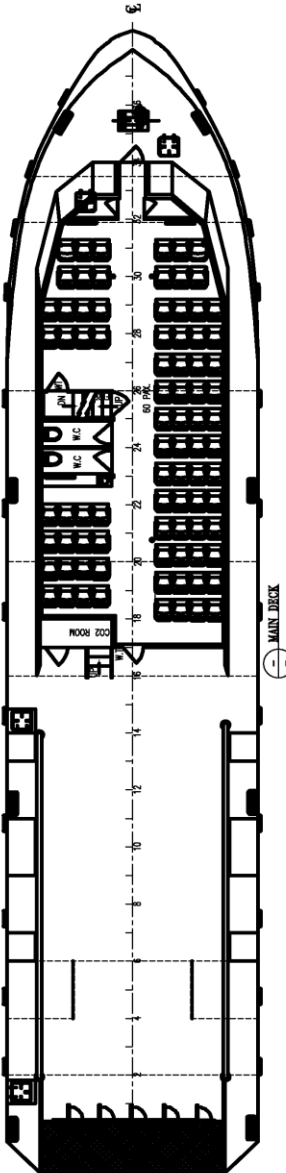
Particulars are believed to be correct but not guaranteed. Owners reserve the rights to amend the specifications without notifications. Particulars are entirely without warranty as to correctness and interested parties must inspect vessel's certificates, drawings or physical inspection of vessel.

GENERAL ARRANGEMENT PLAN - EXPRESS 60



PRINCIPAL PARTICULARS

- LENGTH (O.A.) : 36.00 m
- LENGTH (B.P.) : 32.50 m
- BREADTH (MID.) : 7.60 m
- DEPTH (MID.) : 3.65 m
- DESIGNED DRAUGHT : 1.84 m
- COMPLEMENT : 10 CREW
- IMO NUMBER : 84 OFFSHORE
- BV1 * HULL * MACH : WORKERS
- CREW BOAT/CARGO UTILITY VESSEL COASTAL AREA : 9519951



EXPRESS 60

B	07.09.18	24 SEATS ADDED AT PORTSIDE	NSN	-
29895	A	23.09.17	DD	-
UD	REV	DATE	DESCRIPTION	REVISED BY

MEO
MCLYN EXPRESS OFFSHORE
VALDORRELANDIA
HAMBURG
PO BOX 48112, TEL: +49 4103 6833, FAX: +49 4103 6831644

ARES MARINE & ENGG. SERVICES
207 E. OGDEN AVE.
SARASOTA, FL 34236, USA
Tel: +971(0)6 550 3300, Fax: +971(0)6 550 3100
Website: www.aresmar.com, Email: design@aresgroup.co

This drawing, design concept, and specifications are the property of ARES MARINE & ENGG. SERVICES and are furnished on a non-exclusive basis. It is to be used only for the project and vessel for which it was prepared. No part of this drawing, design, or specifications may be reproduced, stored in a retrieval system, or transmitted in any form or by any means, electronic, mechanical, photocopying, recording, or by any information storage and retrieval system, without the prior written permission of ARES MARINE & ENGG. SERVICES. The contents hereof are for information only and are not intended to constitute an offer of any financial product or service. The contents hereof are for information only and are not intended to constitute an offer of any financial product or service.

TITLE: **GENERAL ARRANGEMENT PLAN**

VESSEL NAME :	EXPRESS 60	DATE :	23.09.17	DWG. No. :	DM10639/2002
DRAWN BY :	VKN	JOB No. :	DM10638	SHEET :	01 OF 01
CHECKED BY :	SSS	SCALE :	1:100	REV. :	A
				SIZE :	A2