



MICLYN ONYX

40M / 3200BHP / Utility Service Vessel

PRINCIPAL PARTICULARS

Year Built	2008
Place Built	PT Miclyn Shipbuilding, Batam, Indonesia
Design	Shiptech Naval Architects
Flag	Panama
Length Overall	39.80 m
Length BP	33.53 m
Breadth Moulded	10.00 m
Depth Moulded	4.20 m
Draft (max)	3.50 m
Freeboard (SLL)	0.70 m
Class	BV
Notation	I x Hull x Mach Tug, Unrestricted Navigation
GRT/ NRT	498.00 T / 149.00 T
Deadweight	309.00 T
Bollard Pull	40.00 T

DECK PARTICULARS

Clear Deck Area	120.00 m ²
Deck Carrying Load	16.50 T
Deck Strength	2.45 T/m ²

PERFORMANCE

Maximum Speed	11 Knots @ 9 T/24 hrs
Economic Speed	8 Knots @ 7 T/24 hrs

PROPULSION SYSTEM

Main Engines	2 x Cummins KTA50M2, 1600 BHP @ 1800 RPM, Total 3200 BHP
Auxiliary Engines	3 x Cummins, 185 kW
Emergency Generator	1 x Emergency Genset, 80 kW, 440V
Bow Thruster	250 BHP in Tunnel
Propellers	2 x Fixed Pitch Propellers with Kort Nozzles
Steering Gear System	2 x Electro-Hydraulic
Rudder	2 x Fixed Units

TANK CAPACITIES

Fuel Oil	302.49 m ³
Fresh Water	128.94 m ³
Drill Water	42.00 m ³
Bilge	5.49 m ³
Ballast Water	44.79 m ³

CARGO DISCHARGE CAPACITIES

Fuel Oil Pump	40 m ³ /hr
Fresh Water Pump	Nil
Bilge Pump	Nil



DECK EQUIPMENT

Anchors & Chain	2 x Stockless Bower 780 kg, Chain 330 m x 24 mm (Dia) U2 Steel Stud Link Chain
Tugger Winch	5 T Pull @ 15/min (1st Layer) Drum 220 m x 20 mm (Dia) SWR @ 8 layers
Capstan	1 x Electro-Hydraulic 5 T
Anchor Windlass c/w Bow	Nil
Crane	Nil

ANCHOR HANDLING & TOWING EQUIPMENT

Towing Pin	SWL 100T
Shark Jaw	SWL 100T
Stern Roller	SWL 60 T, 4 m (W) x 1000 mm (Dia)

ACCOMMODATION

Berths	2 x 1, 4 x 2, 2 x 3, 4 x 4 Berths
Total Pax	32

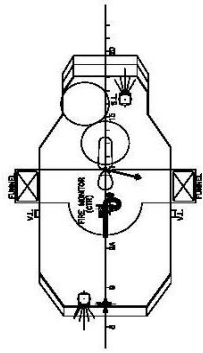
LIFE-SAVING EQUIPMENT

Fi-Fi Notation	Nil
Fi-Fi Monitors	1 x 1200 m ³ /hr
Fi-Fi Pump	1 x 1200 m ³ /hr

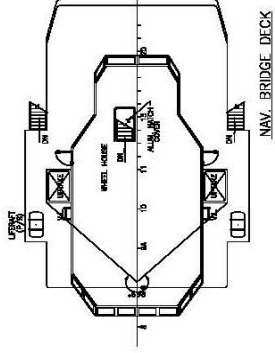
EXTERNAL FIRE-FIGHTING EQUIPMENT

Life Rafts	4 x 25 Men, SOLAS Compliant
Rescue Boat c/w Davit	1 x 6 Men, 20 HP, SOLAS compliant

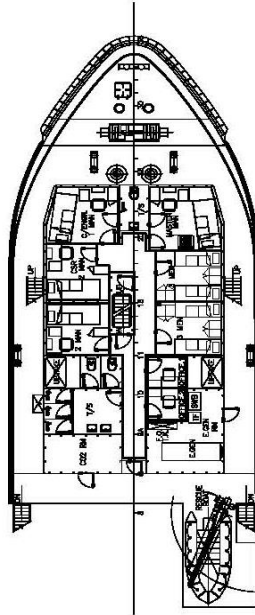
Particulars are believed to be correct but not guaranteed. Owners reserve the rights to amend the specifications without notifications. Particulars are entirely without warranty as to correctness and interested parties must inspect vessel's certificates, drawings or physical inspection of vessel.



FLYBRIDGE DECK

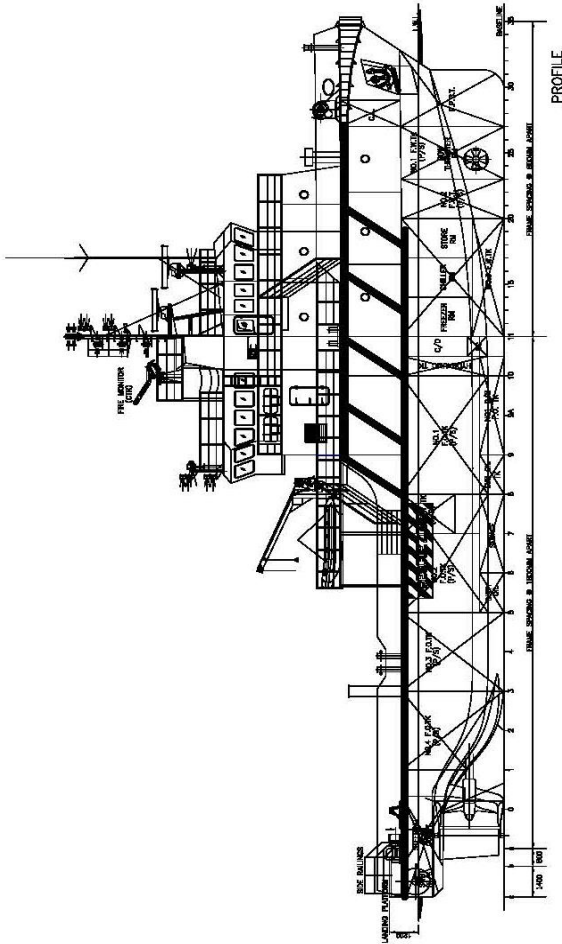


NAV. BRIDGE DECK

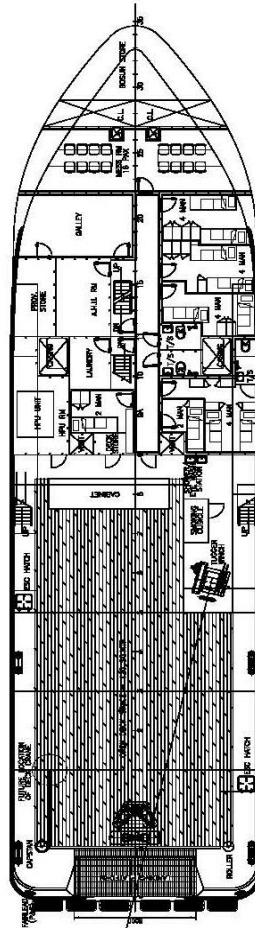


FORECASTLE DECK

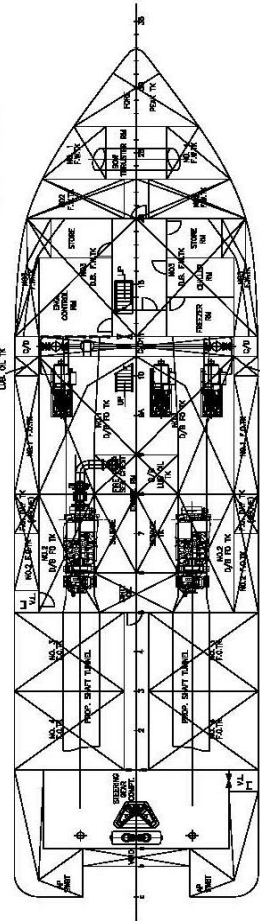
2x1MAN = 2MEN
 2x2MAN = 4MAN
 2x3MAN = 6MEN
 TOTAL = 12MEN



PROFIELE



MAIN DECK PLAN
 2x2MAN = 4MEN
 4x4MAN = 16MEN
 TOTAL = 20MEN



BELOW MAIN DECK PLAN

PRINCIPAL PARTICULARS

LENGTH O.A. 39.80 M
 LENGTH W.L. 38.13 M
 LENGTH B.P. 35.33 M
 BREADTH MOULDED 10.00 M
 DEPTH MOULDED 4.20 M
 DRAFT DESIGNED 3.50 M
 CREW PERSONNEL 32 CREW/ PERSONNEL

DESCRIPTION	REV	DATE	BY	CHECKED BY	DATE
CLIENT: MCLYN EXPRESS OFFSHORE					
TITLE: GENERAL ARRANGEMENT PLAN					
SHIP NAME: MCLYN ONYX					
CONTRACT NO.: MEO-COYX-04-001					
SCALE:	DATE:	REV:	BY:	CHECKED BY:	DATE:
0	E106	0	CFI	LR	AI
APPROVED: LCH					
DATE: 18 MARCH 2014					



MEO-COYX-04-001
 MCLYN ONYX
 MCLYN EXPRESS OFFSHORE
 MCLYN ONYX
 MCLYN EXPRESS OFFSHORE
 MCLYN ONYX
 MCLYN EXPRESS OFFSHORE

