



Uniexpress 18

Fast Crewboat/ Utility Vessel

PRINCIPAL PARTICULARS

Year Built	3/7/1905
Place Built	Thailand
Design	Marsun Co. Ltd
Flag	Thailand
Length Overall	40.00 m
Length BP	37.50 m
Breadth Moulded	7.60 m
Depth Moulded	3.60 m
Draft (max)	1.70 m
Freeboard (SLL)	1.21 m
Class	DNV.GL
Notation	X 1A HSLC Crew R1
GRT/ NRT	247.00 T / 74.00 T
Deadweight	147.00 T

DECK PARTICULARS

Clear Deck Area	120.00 m ²
Deck Carrying Load	50.00 T
Deck Strength	2.00 T/m ²

PERFORMANCE

Maximum Speed	24 Knots @ 15 T/24 hrs @ 32 DWT
Economic Speed	18 Knots @ 9.2 T / 24 hrs @ 32 DWT

PROPULSION SYSTEM

Main Engines	3 Units x Cummins KTA38-M2, 1350 BHP, 1007 kW @ 1950 RPM, Total BHP = 4050
Auxiliary Engines	2 x Cummins 6BT5.9, 80 kW @ 1500 RPM
Propellers	3 x Nickel-Aluminium Bronze 4-Blade Propellers Stone Marine
Steering Gear System	2 x RIQ, 7087U12-2.5-35-T
Rudder	2 Units

TANK CAPACITIES

Fuel Oil	65.00 m ³
Fresh Water	25.00 m ³

CARGO DISCHARGE CAPACITIES

Fuel Oil Pump	20.00 m ³ /hr, 2900 RPM, Azcue BT-IL52D3
Fresh Water Pump	20.00 m ³ /hr, Max Ht= 40 m, Azcue CA50/7A
Bilge	30 m ³ /h, 2900 RPM, Azcue CA-50-7 Ø185

DECK EQUIPMENT

Anchor Windlass c/w Bow	MARSUN, 120 kg Anchor, 1.25 m Chain, 100 m Wire Rope
-------------------------	--

ACCOMMODATION

Passenger Seats	70
Crew	6



EXTERNAL FIRE-FIGHTING EQUIPMENT

Fi-Fi Notation	ACP, 600 m ³ /h, 250DF
Fi-Fi Monitors	600 m ³ /hrs, 100 m Throw Length
Fi-Fi Pump	600 m ³ /hr
Oil Dispersant System	Spray boom, 200 L/hr

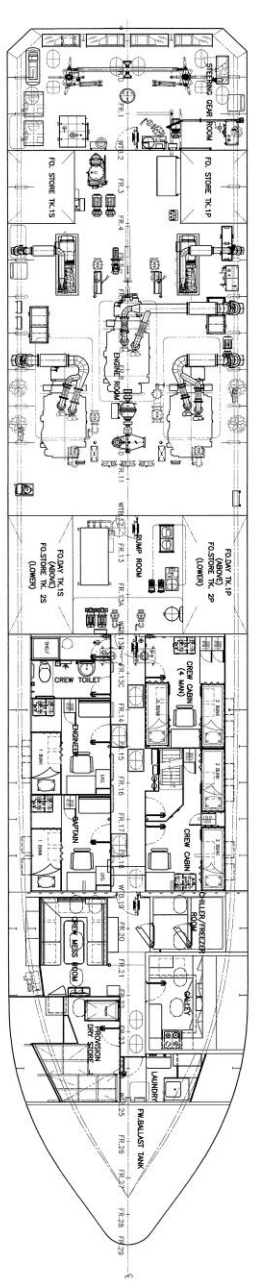
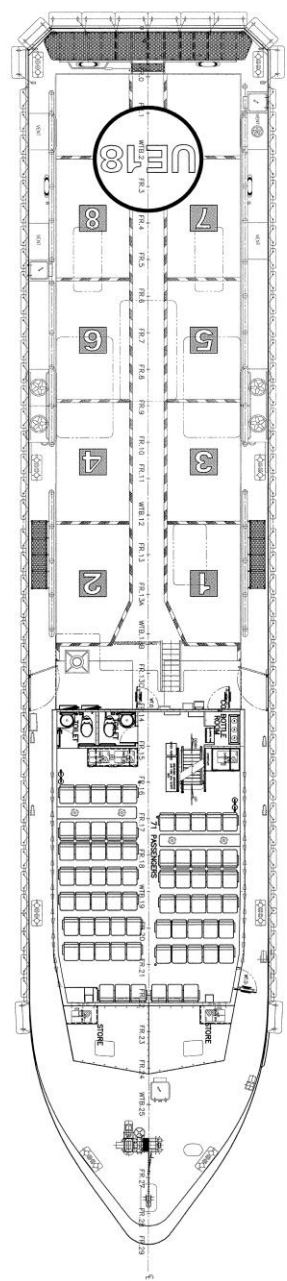
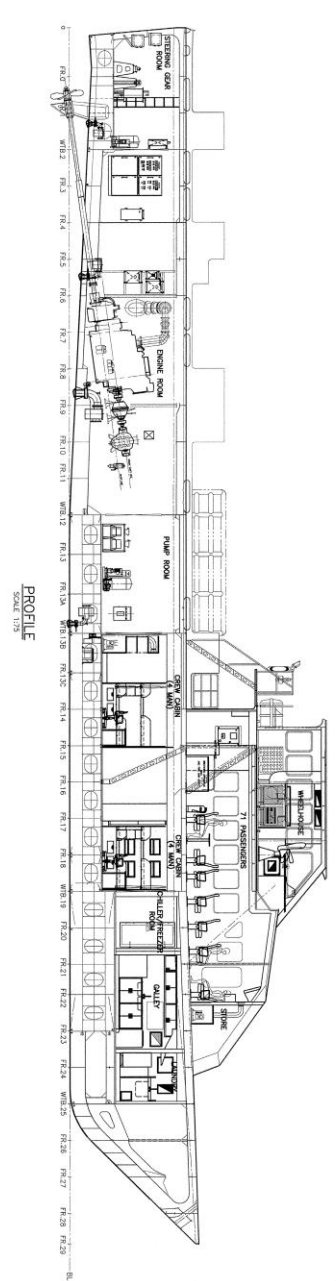
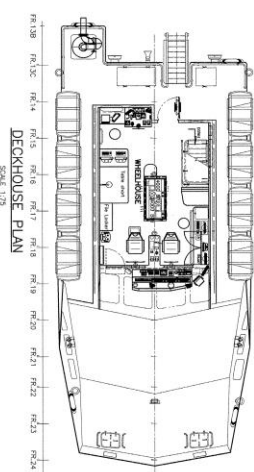
INTERNAL FIRE-FIGHTING & ANTI-POLLUTION EQUIPMENT

Emergency Fire Pump	Azcue CA 50-7 Ø 185, 30 m ³ /hr, 2900 RPM
CO2 Fi-Fi System	4 x Fixed CO2 System for Engine Room
Fire Detection & Alarm	Notifier, NFS2-640/E

LIFE-SAVING EQUIPMENT

Life Rafts	8 x 20 men, SOLAS Compliant
------------	-----------------------------

Particulars are believed to be correct but not guaranteed. Owners reserve the rights to amend the specifications without notifications. Particulars are entirely without warranty as to correctness and interested parties must inspect vessel's certificates, drawings or physical inspection of vessel.



MAIN CHARACTERISTICS

LENGTH OVER ALL	40.00	M.
LENGTH WATERLINE (Draft Loaded)	37.50	M.
BREADTH MOULDED	7.60	M.
DEPTH MOULDED	3.60	M.
DRAFT (DESIGN)	1.25	M.
DRAFT (LOADED) MLD.(APPROX)	1.70	M.
COMPLEMENT	10	CREW
FUEL OIL	71	PASSENGERS
PORTABLE WATER	50	CUM
CLEAR DECK SPACE	20	CUM
	120	Sq.M

AS-BUILT		REVISION	
NO.	DATE	NO.	DATE
1			
<p>SHIP'S NAME: 232-1-801-02 (232 GANNORAD) DMS</p> <p>OWNER: UNWISE OFFSHORE LIMITED</p> <p>DESIGNER: MARSSUN COMPANY LIMITED 40m CREW UTILITY VESSEL Website: www.marssun.com</p> <p>DESIGNED BY: AK DATE: 18/06/23</p> <p>PROJECT NO: 232</p> <p>GENERAL ARRANGEMENT (ONBOARD)</p> <p>SCALE: 1:25</p>			

