

Uniexpress 21

Fast Crewboat/ Utility Vessel



PRINCIPAL PARTICULARS

Year Built	2002
Place Built	Henderson-Western Australia
Design	Wave Naster Int'l
Flag	Thailand
Length Overall	32.20 m
Length BP	32.59 m
Breadth Moulded	8.00 m
Depth Moulded	3.50 m
Draft (max)	2.60 m
Freeboard (SLL)	1.90 m
Class	BV
Notation	I +HULL, +MACH, Crewboat, Special Service (Industrial Exploration & Petroleum Producer), Cargo Utility Vessel, Unrestricted navigation
GRT/ NRT	243.00 T / 77.00 T
Deadweight	119.10 T

DECK PARTICULARS

Clear Deck Area	56.00 m ²
Deck Carrying Load	40.00 T
Deck Strength	1.50 T/m ²

PERFORMANCE

Maximum Speed	20 Knots @ 12.0 T/24 hrs
Economic Speed	15 Knots @ 8.0 T/24 hrs

PROPULSION SYSTEM

Main Engines	3 x Cummins KTA 38-M2, 1350 BHP @ 1950 RPM, Total 4050 BHP00
Auxiliary Engines	2 x Cummins 6BT5.9- D(M), 80 kW @ 1500 RPM
Propellers	3 x Fixed Pitch Propeller, 4-blade Nickel-Aluminium Bronze Propeller Stone Marine
Steering Gear System	W.E.G MOT AL100L FV16334
Rudder	2 Units

TANK CAPACITIES

Fuel Oil	65.00 m ³
Fresh Water	10.00 m ³
Bilge	Varisco E30-160, C.I./ Bronze Impellor, 15 m ³ /h

DECK EQUIPMENT

Anchor Windlass c/w Bow	Electro Hydraulic Winch c/w Wire Rope, Chain & Single Anchor
-------------------------	--

ACCOMMODATION

Passenger Seats	120
Crew	6

EXTERNAL FIRE-FIGHTING EQUIPMENT

Fi-Fi Notation	Main Engine Driven
Fi-Fi Monitors	Fi-Fi Monitor, 600 m ³ /h, 130 m Throw Length
Fi-Fi Pump	30 m ³ /hr

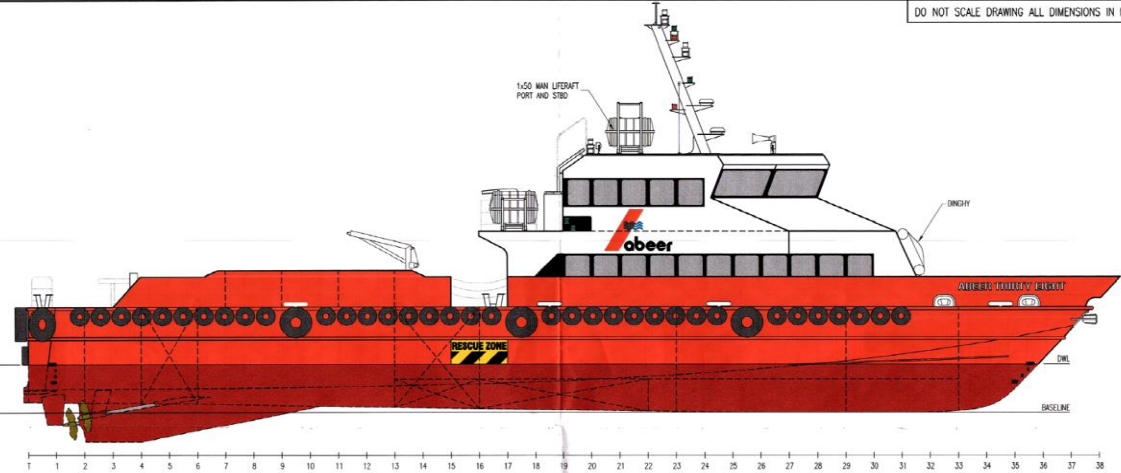
INTERNAL FIRE-FIGHTING & ANTI-POLLUTION EQUIPMENT

Emergency Fire Pump	Yanmar Diesel Engine LA series S/N: C11647, 3.1 kW @ 3600RPM
CO2 Fi-Fi System	4 x Fixed CO2 System for Engine Room
Fire Detection & Alarm	FST 851 R

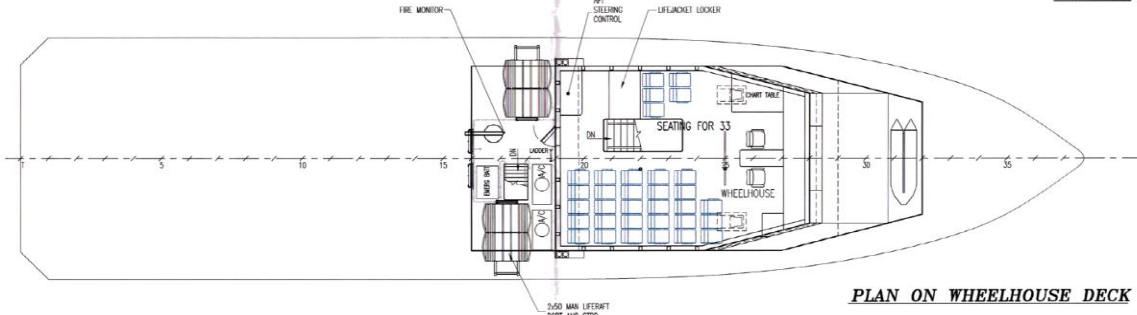
LIFE-SAVING EQUIPMENT

Life Rafts	6 x 50 men, SOLAS Compliant
------------	-----------------------------

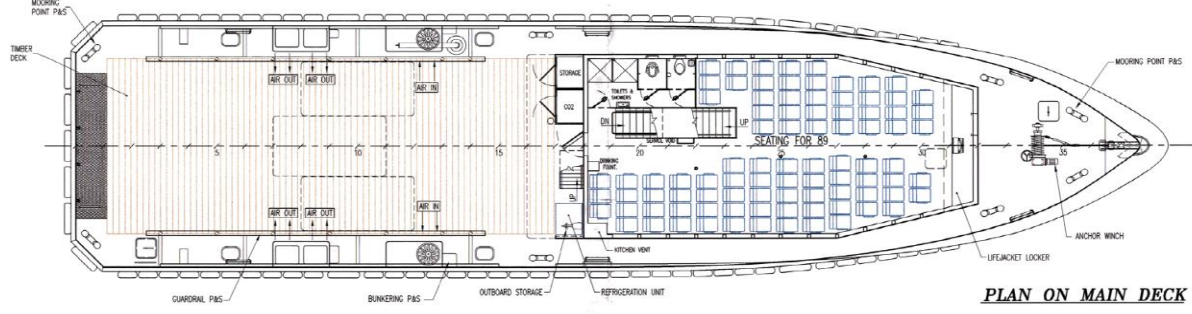
DO NOT SCALE DRAWING ALL DIMENSIONS IN MILLIMETERS U.O.N.



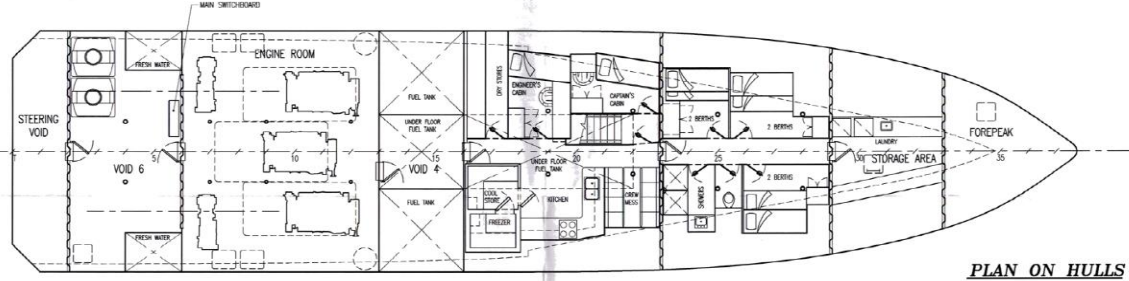
PROFILE



PLAN ON WHEELHOUSE DECK



PLAN ON MAIN DECK



PLAN ON HULLS

PRINCIPLE PARTICULARS	
Length Overall	- 34.0m
Length on Waterline	- 31.3m
Beam (Moulded)	- 8.0m
Hull Depth	- 3.5m
D.W.L.	- 1.60m
Diesel Fuel	- 50000L
Fresh Water	- 10000L
Industrial Personnel	- 122
Crew (Total)	- 8

D 1 AS BUILT		MS 116.09.021	SC
C 1 AS BUILT	DESIGN APPROVAL	MS 116.09.021	SC
D 1 AS BUILT	CONSTRUCTION	MS 116.09.021	SC
Rev	Description	Drawn	Scale
1			
2			
3			
4			
5			
6			
7			
8			
9			
10			
11			
12			
13			
14			
15			
16			
17			
18			
19			
20			
21			
22			
23			
24			
25			
26			
27			
28			
29			
30			
31			
32			
33			
34			
35			
36			
37			
38			
39			
40			
41			
42			
43			
44			
45			
46			
47			
48			
49			
50			
51			
52			
53			
54			
55			
56			
57			
58			
59			
60			
61			
62			
63			
64			
65			
66			
67			
68			
69			
70			
71			
72			
73			
74			
75			
76			
77			
78			
79			
80			
81			
82			
83			
84			
85			
86			
87			
88			
89			
90			
91			
92			
93			
94			
95			
96			
97			
98			
99			
100			

WaveMaster INTERNATIONAL
 27 Quill Way, Henderson 6108 Western Australia
 Telephone: 08 91 9410 1422 Fax: 08 91 41 10 2089
 A.C.N. 009 100 314
 E-MAIL: wave@waveinternational.com.au
 Website: www.waveinternational.com.au

Project	Yard 180	34m WORK BOAT	Scale	1:75	Sheet Size	A1
Drawing Title	GENERAL ARRANGEMENT		Drawing No.	180-101	Rev.	D

828