



MEO VIGILANT

4750BHP / 61.1BP / Multi-Purpose AHT

PRINCIPAL PARTICULARS

| | |
|-----------------|---|
| Year Built | 2011 |
| Place Built | Guangzhou Panyu Lingshan Shipyard, China |
| Design | Evergrow Shipbuilding, 48m ZPP MPV |
| Flag | Singapore |
| Length Overall | 48.00 m |
| Length BP | 44.67 m |
| Breadth Moulded | 12.80 m |
| Depth Moulded | 5.00 m |
| Draft (max) | 4.20 m |
| Freeboard (SLL) | 0.812 m |
| Class | BV |
| Notation | I x Hull x Mach; Tug; Supply Vessel, Fire Fighting Ship 1-Water Spraying, Unrestricted Navigation |
| GRT/ NRT | 841.00 T / 252.00 T |
| Deadweight | 780.00 T |
| Bollard Pull | 61.60 T (Ahead), 54.13 T (Astern) |

DECK PARTICULARS

| | |
|--------------------|-----------------------|
| Clear Deck Area | 230.00 m ² |
| Deck Carrying Load | 100.00 T |
| Deck Strength | 5.00 T/m ² |

PERFORMANCE

| | |
|----------------|------------------------|
| Maximum Speed | 12 Knots @ 16 T/24 Hrs |
| Economic Speed | 11 Knots @ 12 T/24 hrs |

PROPULSION SYSTEM

| | |
|----------------------|---|
| Main Engines | 2 x Caterpillar 3516B, 2374 BHP, 1771 kW @ 1600 RPM, Total 4750 BHP |
| Auxiliary Engines | 3 x Caterpillar 3406, 245kW @ 1500 RPM |
| Emergency Generator | Perkins, 50 kW @ 1500 RPM |
| Bow Thruster | Schottel CCP Electric Driven, 5 T Thrust |
| Propellers | 2 x Azimuth Drive Propellers |
| Steering Gear System | Nil |

TANK CAPACITIES

| | |
|---------------|-----------------------|
| Fuel Oil | 677.78 m ³ |
| Fresh Water | 212.24 m ³ |
| Bilge | 6.25m ³ |
| Ballast Water | 114.68 m ³ |

CARGO DISCHARGE CAPACITIES

| | |
|------------------|-----------------------------------|
| Fuel Oil Pump | 80 m ³ /hr @ 70 m head |
| Fresh Water Pump | 80 m ³ /hr @ 70 m head |
| Bilge Pump | 50 m ³ /hr @ 35 m head |



DECK EQUIPMENT

| | |
|-------------------------|---|
| Anchors & Chain | 2 x 856 kg AC14 HHP, 192.5 m (P), 220 m (S), 34 mm Stud Link Chains |
| Tugger Winch | 2 x Electro-Hydraulic 10 T @ 15 m/min |
| Capstan | 2 x Electro-Hydraulic 5 T @ 15 m/min |
| Anchor Windlass c/w Bow | Electro-Hydraulic, 80 T Break, 10 T Pull |
| Crane | SWL 2 T @ 6.5 m Radius (max SWL) |

ANCHOR HANDLING & TOWING EQUIPMENT

| | |
|-------------------------------|---|
| Anchor Handling/ Towing Winch | 100 T Pull Electro-Hydraulic, Waterfall Type, FWD Tension Capacity 60 T |
| AH/Towing Drum Capacity | 1000 mm L x 52 m Dia, 10 Layers |
| Spare Reel Drum Capacity | 1000 mm L x 52 m Dia, 10 Layers |
| Line Pull @ First Layer | 100 T x 4 m/min, Low Speed |
| Brake Holding | 150 T (Static, 1st Layer) |
| Towing Pin | SWL 200 T, Marine Equipment |
| Shark Jaw | SWL 200 T, Marine Equipment |
| Stern Roller | SWL 200T, 3.5 m W x 1.5 m Dia |
| Bow Winch | Electro-Hydraulic Marine Equipment, Brake Holding 80 T |
| Fwd Tow Winch | Electro-Hydraulic Marine Equipment, Pull 10 T x 15 m/min (1st Layer Low Speed), Pull 10 T x 15 m/min (1st Layer High Speed) Brake Holding 80 T |
| Aft Tow Winch | Electro-Hyd Marine Equipment Waterfall Type, Pull 100 T x 4 m/min (1st Layer Low Speed), Pull 15 T x 20 m/min (1st Layer High Speed), Brake Holding 200 T |

ACCOMMODATION

| | |
|-----------|----------------------------|
| Berths | 7 x 4, 3 x 2, 2 x 1 Berths |
| Total Pax | 36 |

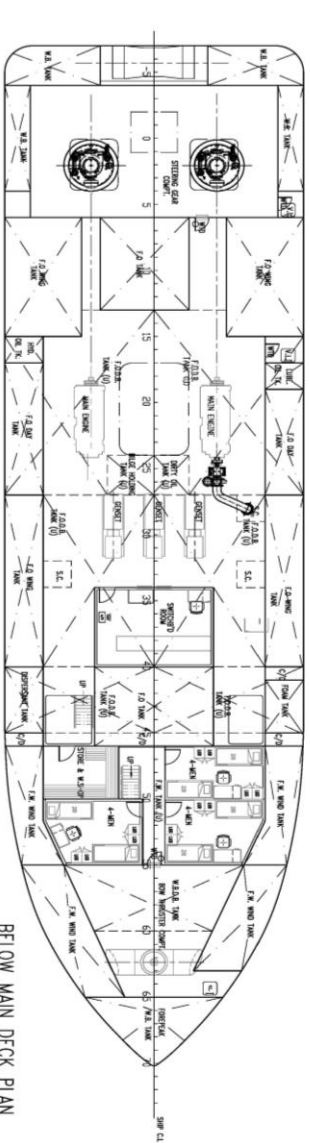
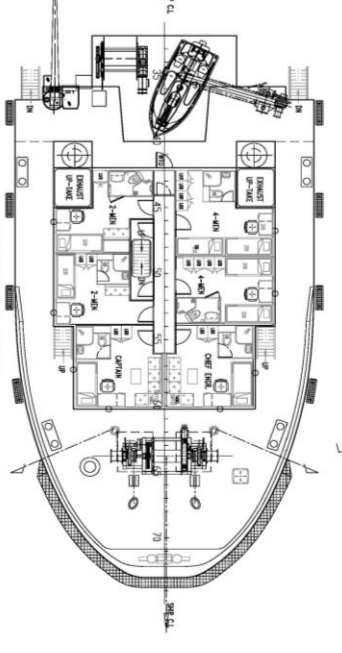
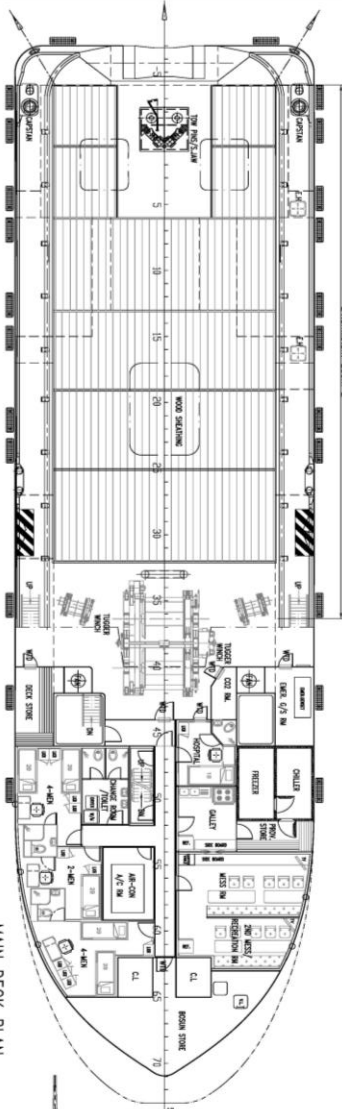
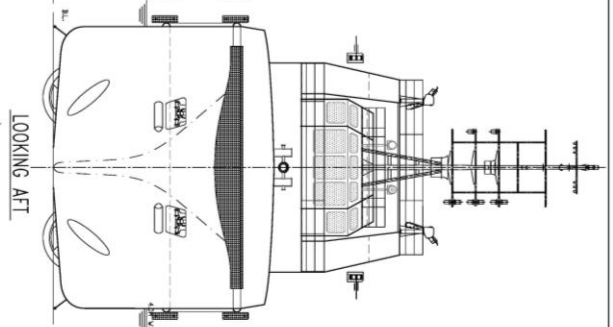
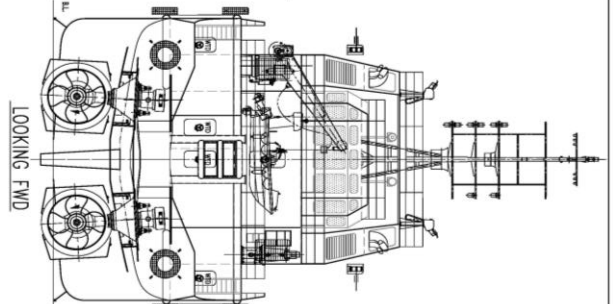
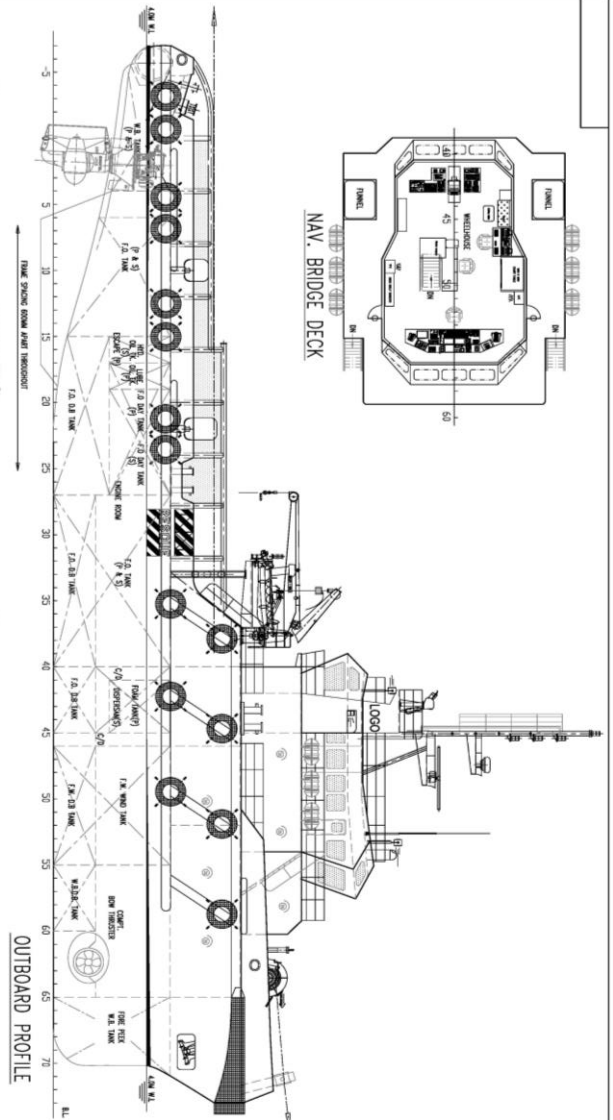
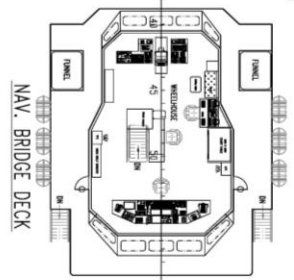
EXTERNAL FIRE-FIGHTING EQUIPMENT

| | |
|----------------|---|
| Fi-Fi Notation | Class 1 Fire Fighting System, 1 x FFS M/E Driven Pump, 2905 m ³ /hr @ 19 bar |
| Fi-Fi Monitors | 2 x 1200 m ³ /hr, 120 m Throw Length |
| Fi-Fi Pump | 2905 m ³ /hr |

LIFE-SAVING EQUIPMENT

| | |
|-----------------------|--|
| Life Rafts | 6 x 20 Men, SOLAS Compliant |
| Rescue Boat c/w Davit | 1 x 6 Men, 20 HP of Outboard Engine, 13 L, SOLAS Compliant |

Particulars are believed to be correct but not guaranteed. Owners reserve the rights to amend the specifications without notifications. Particulars are entirely without warranty as to correctness and interested parties must inspect vessel's certificates, drawings or physical inspection of vessel.



PRINCIPAL DIMENSIONS

| | |
|------------------------|-----------------------|
| LENGTH OVERALL | 48.00 M |
| LENGTH WATERLINE | 46.30 M |
| BREADTH BEHIND RIG | 12.80 M |
| BREADTH MOULDED | 5.00 M |
| DEPTH MOULDED | 4.20 M |
| MAX. DRAUGHT | 4.80 M |
| ACCUMODATION | 36 MEN |
| WATER TANK | 230.00 M ³ |
| FRESH WATER TANK | 200.00 M ³ |
| WATER TANK | 50.00 M ³ |
| BOLLARD PULL (ASTERN) | 92.0 TONNES |
| BOLLARD PULL (FORWARD) | 92.0 TONNES |
| SPEED (MAX) | 12.0 KNOTS |

| | |
|----------|------------------------------|
| SHIP | 48m ZPP MULTI-PURPOSE VESSEL |
| TITLE | GENERAL ARRANGEMENT |
| DESIGNED | SCALE |
| CHECKED | APPROVED |
| DATE | 11/03/2011 |
| REV | AS BUILT |

RUMALKU VENTURA Register: 188919
FOR REFERENCE
 See report R 3.../ASSENT
 Singapore, 16-Nov-2011
 (Electronic document)

