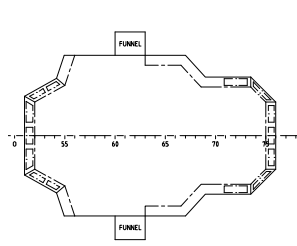
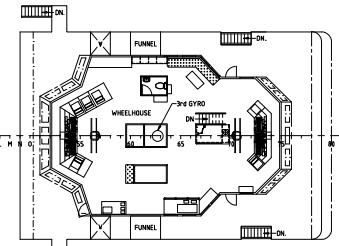


**PRINCIPAL PARTICULARS:**

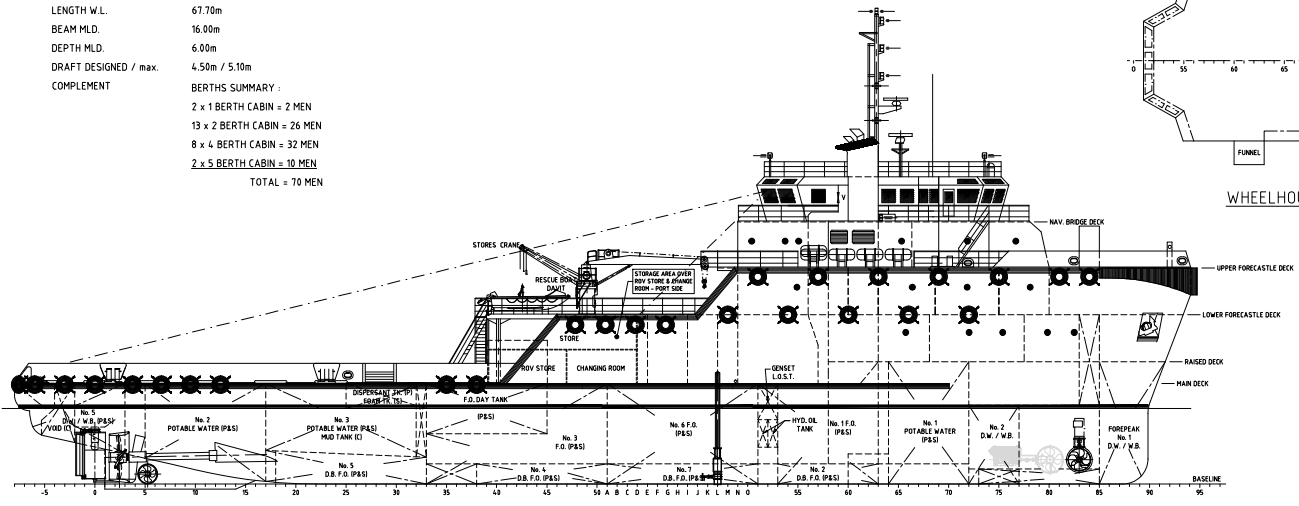
LENGTH O.A. 70.25m  
 LENGTH W.L. 67.70m  
 BEAM MLD. 16.00m  
 DEPTH MLD. 6.00m  
 DRAFT DESIGNED / max. 4.50m / 5.10m  
 COMPLEMENT  
 BERTHS SUMMARY :  
 2 x 1 BERTH CABIN = 2 MEN  
 13 x 2 BERTH CABIN = 26 MEN  
 8 x 4 BERTH CABIN = 32 MEN  
 2 x 5 BERTH CABIN = 10 MEN  
 TOTAL = 70 MEN



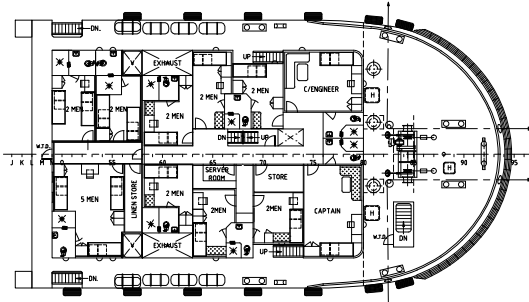
WHEELHOUSE TOP



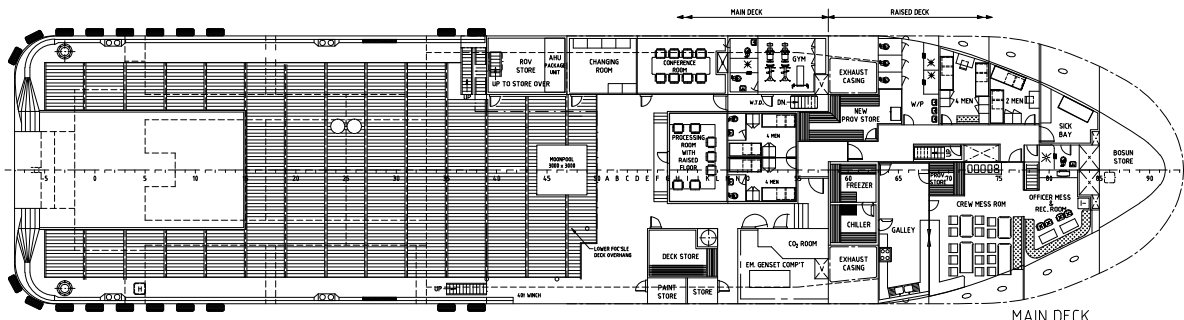
NAV. BRIDGE DECK



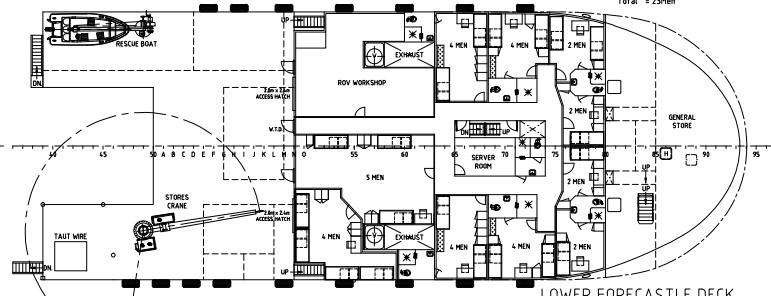
OUTBOARD PROFILE  
 FRAME SPACING 60mm THROUGHOUT



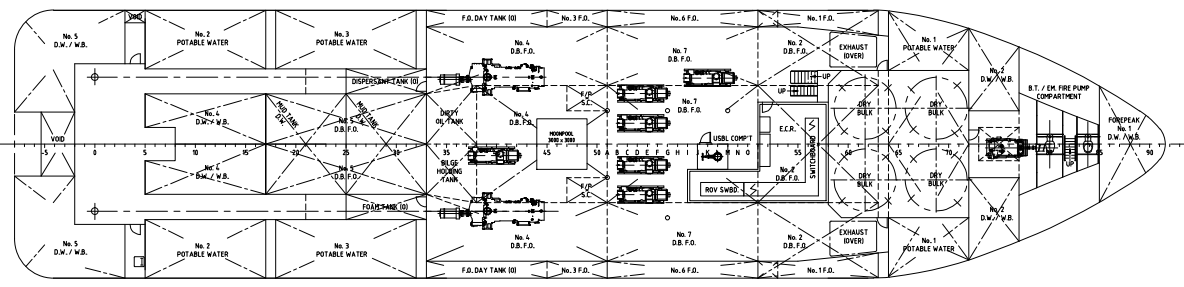
UPPER FORECASTLE DECK  
 2 x 1 Men = 2  
 8 x 2 Men = 16  
 1 x 5 Men = 5  
 Total = 23 Men



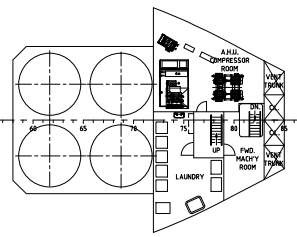
MAIN DECK  
 1 x 2 Men = 2  
 3 x 4 Men = 12  
 Total = 14 Men



LOWER FORECASTLE DECK  
 4 x 2 Men = 8  
 5 x 4 Men = 20  
 1 x 5 Men = 5  
 Total = 33 Men



BELOW MAIN DECK



ACCOMMODATION TWEEN DECK

ASBUILT CREW ACCOMMODATION - OWNERS REQUEST				
DESCRIPTION	REV	LRN	DCP / ET	14/02/16
CLIENT:				
<b>MICLYN EXPRESS OFFSHORE</b>				
TITLE : GENERAL ARRANGEMENT PLAN				
SHIP NAME : MICLYN ENTERPRISE				
CONTRACT NO.:	DRAWING NO.:		MEO-MIEGE-GAP-001	
DRAWN:		REVISED:		
CHECKED:		SCALE:		
DCP		1:100		
SHEET NO.:		DATE:		
1 OF 1		11-FEBRUARY-2016		
APPROVED:		DATE:		
ERIK TING		11-FEBRUARY-2016		



This document contains Confidential, Proprietary information and shall not be Distributed, Reproduced, or Used, Transferred for other Distribution or disclosed to others for any purpose unless Authorized by MEO.