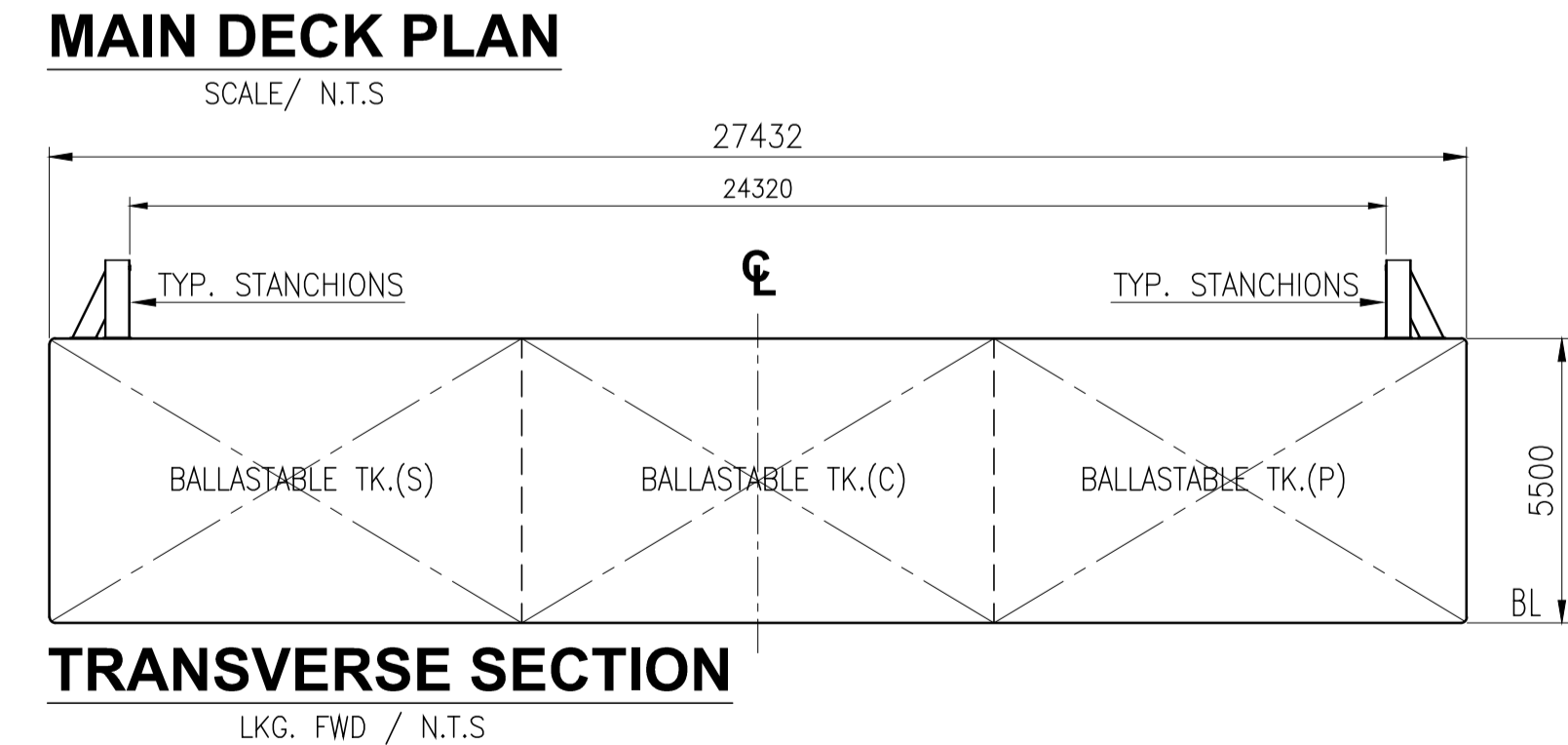
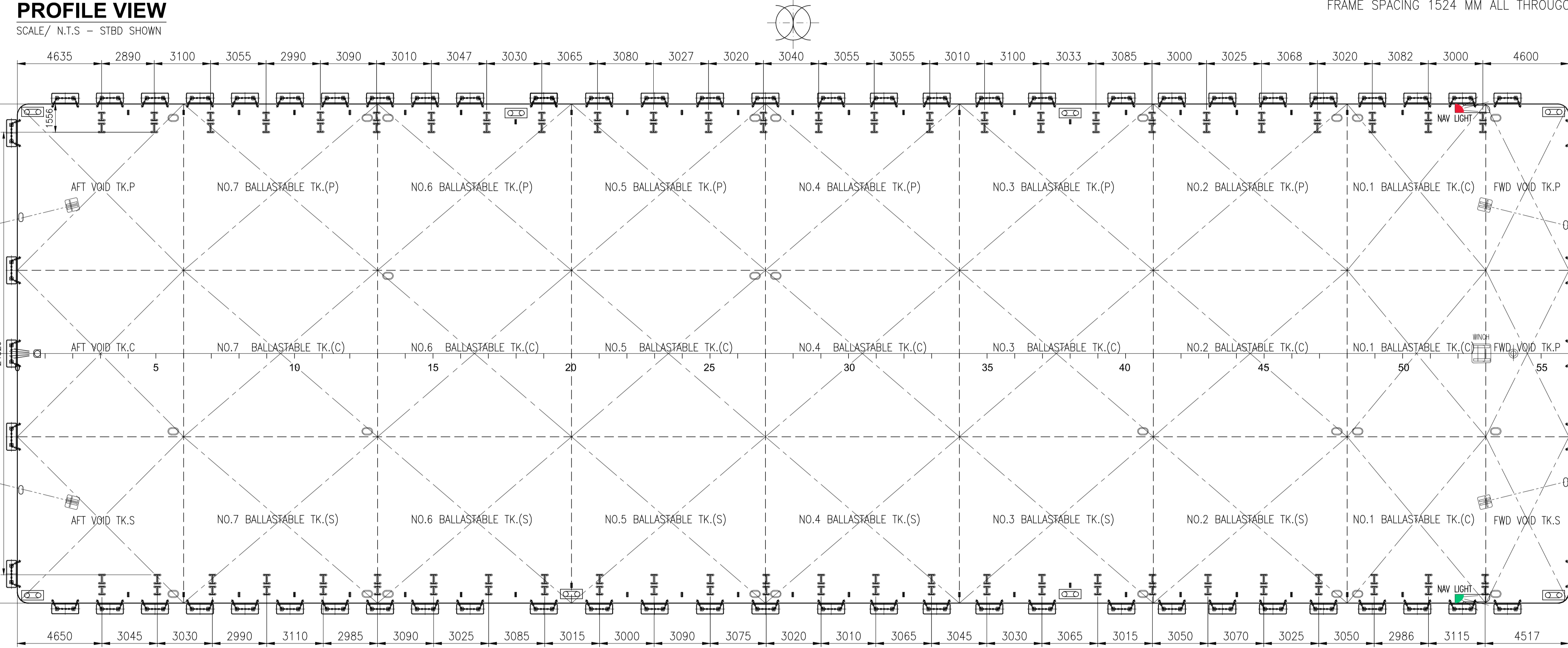
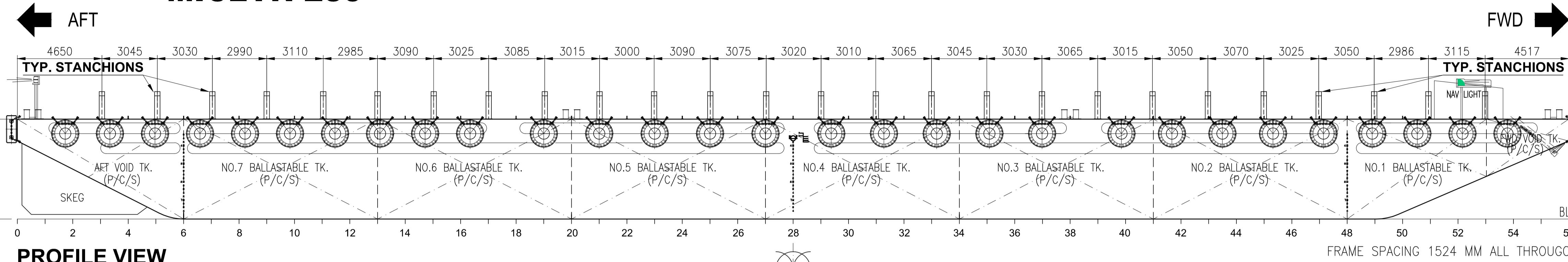


# GENERAL ARRANGEMENT PLAN for " MICLYN 285 "



## PRINCIPAL PARTICULARS

- LENGTH OVERALL - 85.344 M. (280'-00")
- BREADTH MLD. - 27.432 M. ( 90'-00")
- DEPTH MLD. - 5.500 M. ( 18'-00")
- DRAFT MLD. - 4.420 M. ( 14'-06")
- DECK LOAD - 15.000 TON/M2
- CLASS NOTATION: BV I + HULL PONTOON UNRESTRICTED NAVIGATION

NOTE :  
1. ALL DIMENSIONS ARE IN MM UNLESS INDICATED OTHERWISE.  
2. REFER TO " EXTERNAL TYP. STANCHION DETAIL (AS FITTED)". BY. S.N (EOS MIDDLE EAST)

DRAWING NO	REV	DRAWING TITLE	REV	DATE	DESCRIPTION	ORIGINATOR	REVIEWER	APPROVER	CLIENT	APPROVED	DATE
			4	28-03-19	UPDATED DWG. AS PER ACTUAL STANCHION POSITION/ LOCATION	JB	RS	CE	-		
			3	13-11-18	UPDATED DWG. AS PER ADDL P/S STANCHIONS @ FR#3,#13,#51 & #53	JB	RS	CE	-	CONTRACT NO. :	
			2	08-11-18	UPDATED DRAWING AS PER CORRECT TANK NAME & NUMBER	JB	RS	CE	-	DRAWN : JB	
			1	06-01-16	UPDATED AS PER CURRENT STANCHIONS/ DECK PAD EYES	JB	RS	CT	-	DFT. CHECKED : RS	
			0	07-03-13	ISSUED FOR REFERENCE ONLY	DCF	IJR	HKH	-	ENGINEER :	
										APPROVED : CE	07-03-13
										SCALE [ A3 SIZE ] :	

This Document Contains Confidential Proprietary Information And Shall Not Be Copied, Reproduced, Used, Transferred To Other Documents Or Disclosed To Others For Any Purpose Unless Authorized By EOS

Purchaser Review & Comments shall not be assumed to indicate either responsibility or liability for accuracy & completeness of this document or to alter any contractual terms and conditions.



**EOS**  
EXPRESS OFFSHORE SOLUTIONS

10 HOE CHIANG ROAD,  
#09-01 KEPPEL TOWERS,  
SINGAPORE 089315  
TEL: (65) 6545 6211  
FAX: (65) 6820 0167

CONTRACT TITLE: Marine Transportation of Offshore Pipe Lines

TITLE: **GENERAL ARRANGEMENT PLAN  
BARGE - MICLYN 285**

EOS DWG. NO. EOS-ENGG-006

SHT. 1 OF 1 REV. 4