

MICLYN 288

Flat Top Deck Cargo Barge

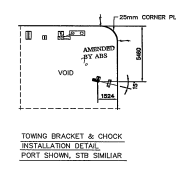
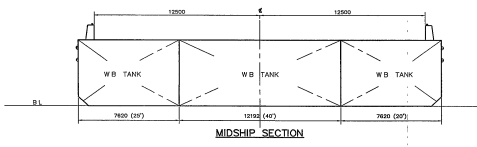
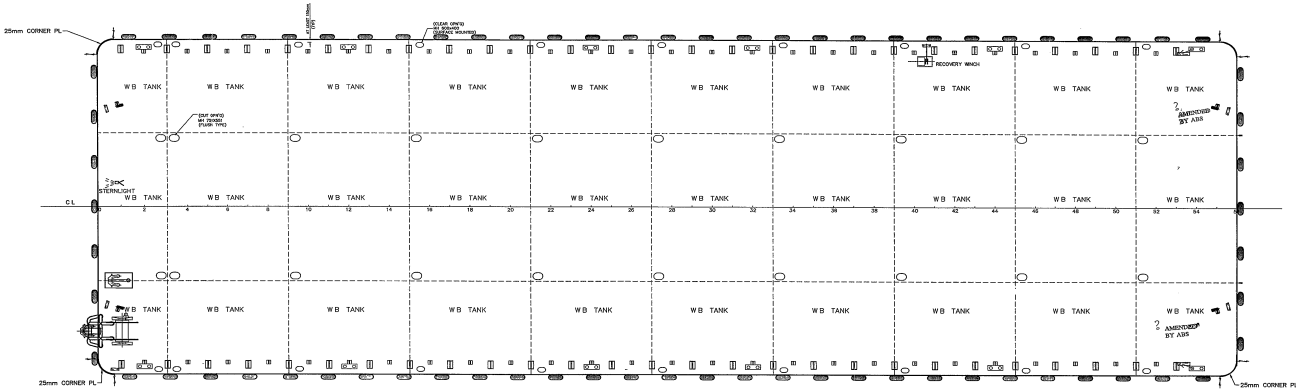
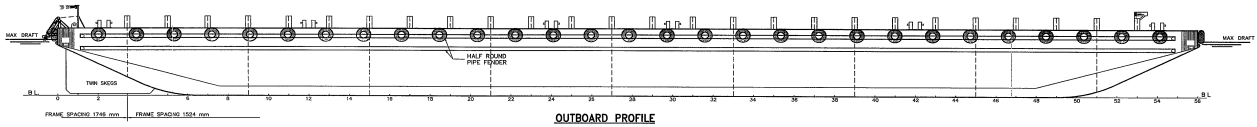
GENERAL

Year Built	2007
Flag / Port of Registry	Singapore / Singapore
Official Number	392596
Class / classification	Bureau Veritas
GRT / NRT	3,292 t / 987 t
Length Overall	280 ft (85.34 m)
Breadth	90 ft (27.43 m)
Depth Loaded	18 ft (5.49 m)
Draft Loaded	14.5 ft (4.42 m)
Dead Weight	7,800 t (approx.)
Deck Loading	15 t / m ²
Transverse Bulkhead	Eight (8)
Longitudinal Bulkhead	Two (2)



DECK EQUIPMENT

Anchor Winch	1 x manual anchor winch (Diesel Driven)
Anchor	1 x 2,100 kg stockless bower anchor
Smit Brackets	3 x smit towing brackets - P&S, fwd and aft
Stanchions	26 stanchions on each side
Navigation Lights	1 set solar type, P&S at fwd and aft
Mooring Bollards	4 sets double mooring bollards each side (deck)



PRINCIPAL PARTICULARS

LENGTH O(A)M(L)D	282' (85 976 m)
BEAM(M)D	90' (27 439 m)
DRAFT(M)D	15' (4 588 m)
DRAFT LOADED	15' (4 573 m)
DECK LOAD	15t/m ²

REVIEWED
14 JUL 2008
ABS LIAISON
SINGAPORE

14 JUL 2008
CONAN WU & ASSOCIATES (P) LTD

OWNER	CEISO (SINGAPORE) PTE LTD	YARD NO.	BY0202-02
BUILDER	HANYONG YENHA SHIPBUILDING CO LTD		
CLASS	ABS		
DATE	14 JUL 2008		
SHIP	282' x 90' x 18' DECK CARGO/TANK BARGE		
TITLE	GENERAL ARRANGEMENT		
INFORMATION	CONAN WU & ASSOCIATES (P) LTD		
DRAWN	T.S.CHUA	SCALE	1:150
CHECKED	T.S.CHUA		
DATE	14 JUL 2008		

Particulars are believed to be correct but not guaranteed. Owners reserve the rights to amend the specifications without notifications. Particulars are entirely without warranty as to correctness and interested parties must inspect vessel's certificates, drawings or physical inspection of vessel.