

EOS 4001

Self Ballastable Deck Cargo Barge

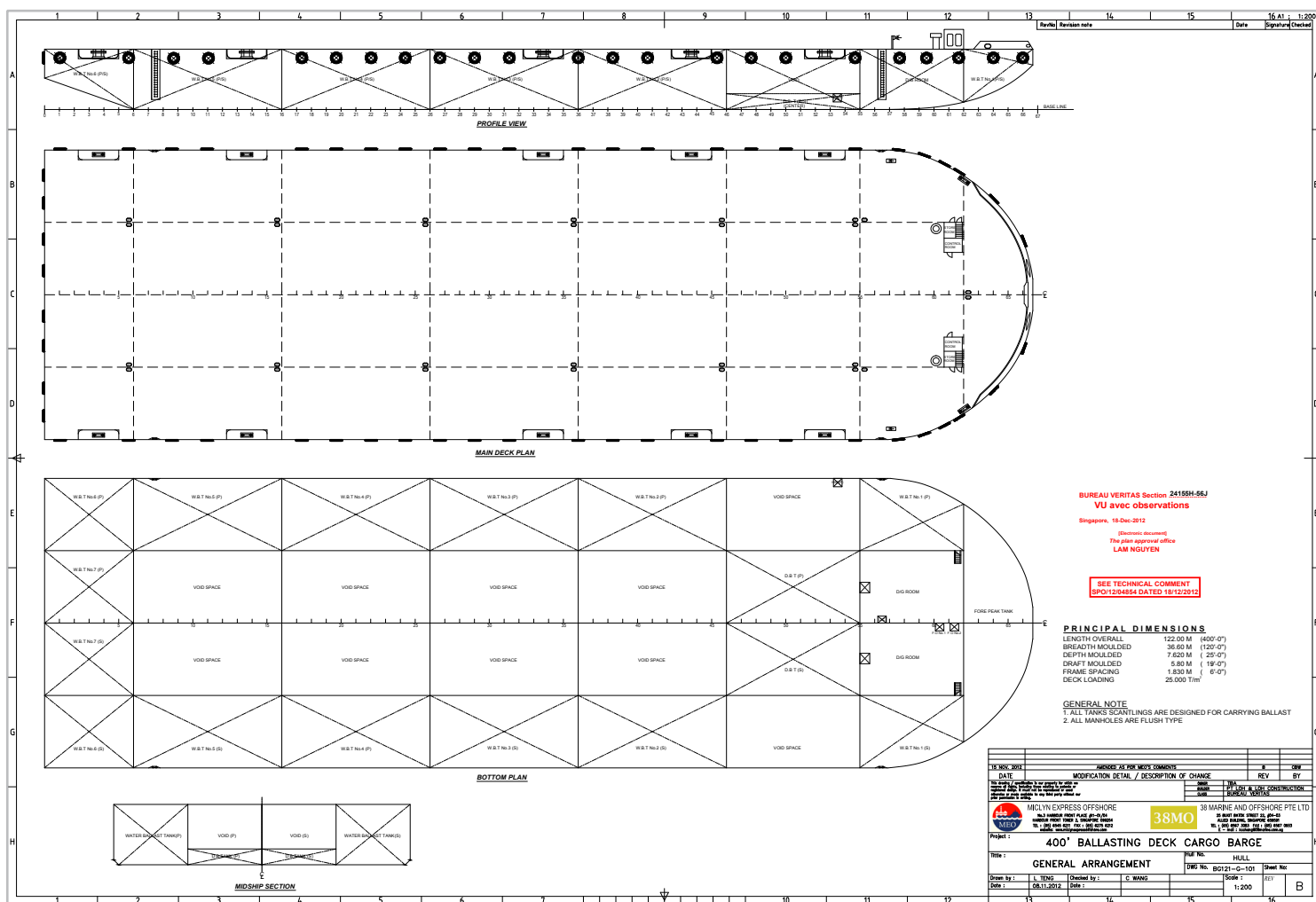
GENERAL

| | |
|-------------------------|-----------------------|
| Year Built | 2013 |
| Flag / Port of Registry | Taiwan / Taichung |
| Official Number | 016413 |
| Class / classification | Bureau Veritas / CR |
| GRT / NRT | 9,128 t / 2,738 t |
| Length Overall | 400 ft (122.00 m) |
| Breadth | 120 ft (36.60 m) |
| Depth Loaded | 25 ft (7.62 m) |
| Draft Loaded | 19 ft (5.80 m) |
| Dead Weight | 20,000 t (approx.) |
| Deck Loading | 25 t / m ² |
| Transverse Bulkhead | Seven (7) |
| Longitudinal Bulkhead | Three (3) |



DECK EQUIPMENT

| | |
|-------------------|---|
| Anchor Winch | 1 x 4 t capacity electric (Diesel Driven) |
| Anchor | 1 x 3,620 kg stockless bower |
| Smit Brackets | 2 x smit towing brackets - P&S, fwd and aft |
| Stanchions | NIL |
| Navigation Lights | 1 set solar type, P&S at fwd and aft |
| Mooring Bollards | 12 x double mooring bollards 12" NB |
| Other | 2 x Diesel Generator @ 290 kW |



Particulars are believed to be correct but not guaranteed. Owners reserve the rights to amend the specifications without notifications. Particulars are entirely without warranty as to correctness and interested parties must inspect vessel's certificates, drawings or physical inspection of vessel.