

# EXPRESS 58



## FAST UTILITY CRAFT/ CREWBOAT



### PRINCIPAL PARTICULARS

YEAR BUILT	2007
PLACE BUILT	Singapore
DESIGN	FLEX 36, Penguin Shipyard Int
FLAG	Panama
LENGTH OVERALL	36.00 m
LENGTH BP	32.50 m
BREADTH MOULDED	7.60 m
DEPTH MOULDED	3.65 m
DRAFT (MAX)	1.88 m
FREEBOARD (SLL)	1.8m
CLASS	DNV.GL
NOTATION	I, Hull, Mach, Crew Boat
GRT/ NRT	239.00 T / 72.00 T
DEADWEIGHT	113.00 T

### DECK PARTICULARS

CLEAR DECK AREA	88.00 m <sup>2</sup>
DECK CARRYING LOAD	32.00 T
DECK STRENGTH	2.00 T/m <sup>2</sup>

### PERFORMANCE

MAXIMUM SPEED	20 Knots @ 14.08 T/24 hrs
ECONOMIC SPEED	18 Knots @ 12.25 T/24hrs
FUEL CONSUMPTION	248/hr

### TANK CAPACITIES

FUEL OIL	52.00 m <sup>3</sup>
FRESH WATER	27.00 m <sup>3</sup>

### PROPULSION SYSTEM

MAIN ENGINES	3 x Cummins, KTA 38 M2, 1350 BHP, 1900 RPM, Total 4050 BHP, 2982 kW
AUXILIARY ENGINES	2 x Cummins, 91kW, 415V, 50 HZ, 3 Phase
PORTABLE GENERATOR	Nil
BOW THRUSTER	Hydraulic Pump Teco, 75 kW, 1475 RPM
PROPELLERS	Triple Screw, Fixed Pitch Propellers
STEERING GEAR SYSTEM	2 Units
RUDDER	2 Units

### CARGO DISCHARGE CAPACITIES

FUEL OIL PUMP	30 m <sup>3</sup> /hr
FRESH WATER PUMP	30 m <sup>3</sup> /hr
BILGE	25 m <sup>3</sup> /hr

### DECK EQUIPMENT

ANCHOR WINDLASS C/W BOW	18 mm Steel Wire rope c/w Thimble Eye, Anchor Chain & Winch
-------------------------	---

### ACCOMMODATION

PASSENGER SEATS	16
CREW	1 x1, 1x1, 1x4, 1x4, 1x4, 1x2

### EXTERNAL FIRE-FIGHTING EQUIPMENT

FI-FI SYSTEM	Detroit Engine 8 V.92/ Garbarino Pumps Asia 150 DF
FI-FI NOTATION	Equivalent to 1/4 FiFi
FI-FI MONITORS	600 m <sup>3</sup> /hr, 130 m head
FI-FI PUMP	600 m <sup>3</sup> /hr, 130 m head
OIL DISPERSANT SYSTEM	Nil

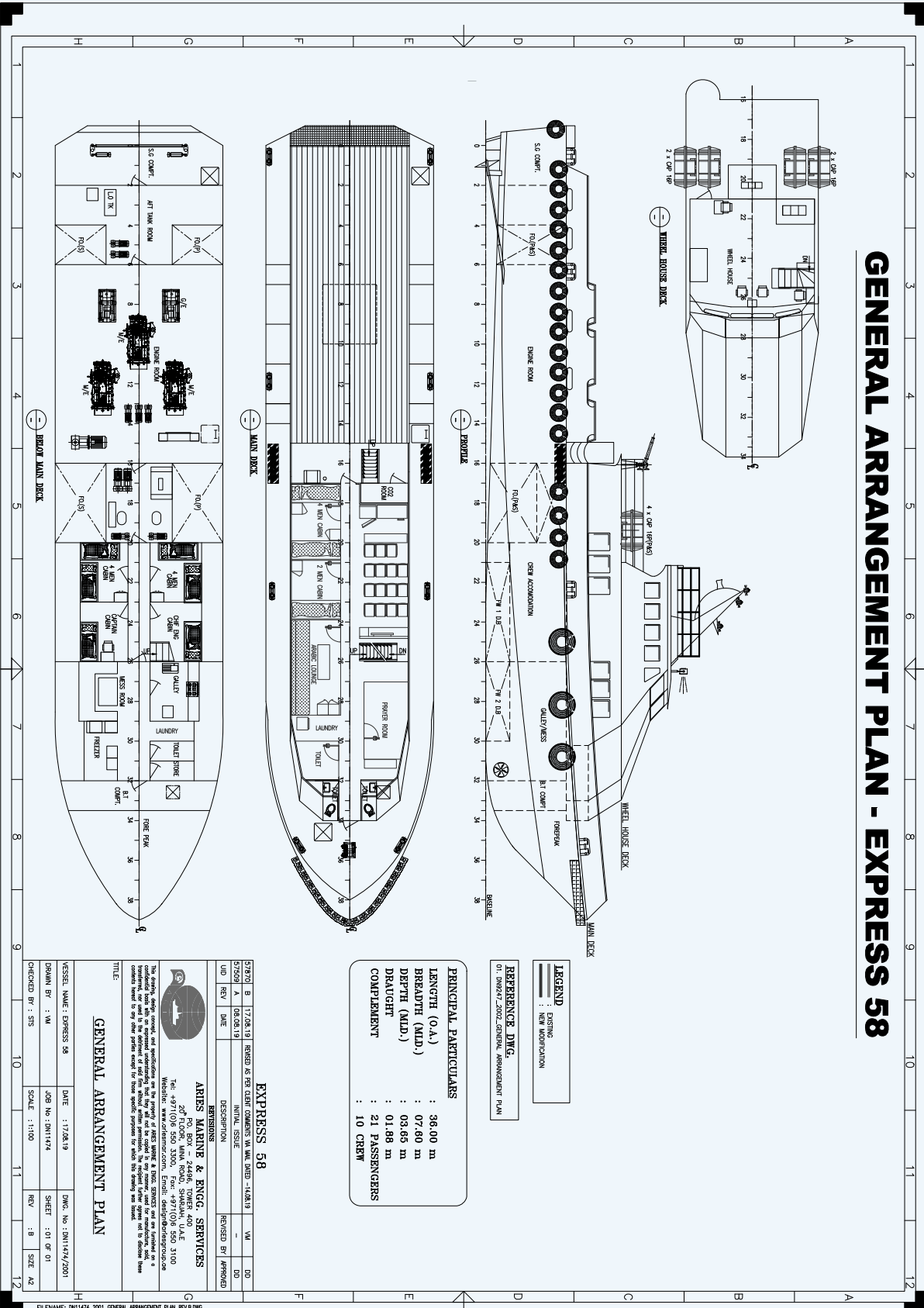
### INTERNAL FIFI & ANTI-POLLUTION EQUIPMENT

EMERGENCY FIRE PUMP	1 x Yanmar Pump YDP30STN-2 23ml head, 850L
CO2 FI-FI SYSTEM	Armstrong NK Fixed CO2 System
FIRE DETECTION & ALARM	Optical Smoke, Multi-Sensor Smoke & Heat Detector

### LIFE-SAVING EQUIPMENT

LIFE RAFTS	4 x 16 men, SOLAS Compliant
------------	-----------------------------

# GENERAL ARRANGEMENT PLAN - EXPRESS 58



**PRINCIPAL PARTICULARS**

LENGTH (O.A.) : 36.00 m  
 BREADTH (MID.) : 07.60 m  
 DEPTH (MID.) : 03.65 m  
 DRAUGHT : 01.88 m  
 COMPLEMENT : 21 PASSENGERS  
 : 10 CREW

**LEGEND**

EXISTING  
 NEW ADDITION

**REFERENCE DWG.**  
 01: 08/07/2001-GENERAL ARRANGEMENT PLAN

## EXPRESS 58

UID	REV	DATE	DESCRIPTION	REVISED BY	APPROVED
07870	B	17.08.19	REVISED AS PER CLIENT COMMENTS WA MAIL DATED -14.08.19	VM	DD
07509	A	08.08.19	INITIAL ISSUE		

**ARIS MARINE & ENGG. SERVICES**  
 207 PLOUARD ROAD, SINGAPORE 401414  
 Tel: +91(0)8 550 3000, Fax: +91(0)8 550 3100  
 Website: www.arismarine.com, Email: sales@arismarine.com

**GENERAL ARRANGEMENT PLAN**

VESSEL NAME : EXPRESS 58	DATE : 17.08.19	DWG. No : 0811474/2001
DRAWN BY : VM	JOB No : 0811474	SHEET : 01 OF 01
CHECKED BY : STS	SCALE : 1:100	REV : 8
		SIZE : A4

Vessel particulars are believed to be correct but are not guaranteed. Owners reserve the rights to amend the specifications without notification. Particulars are entirely without warranty as to correctness. Interested parties must inspect vessel's certificates, drawings or conduct a physical inspection of vessel.