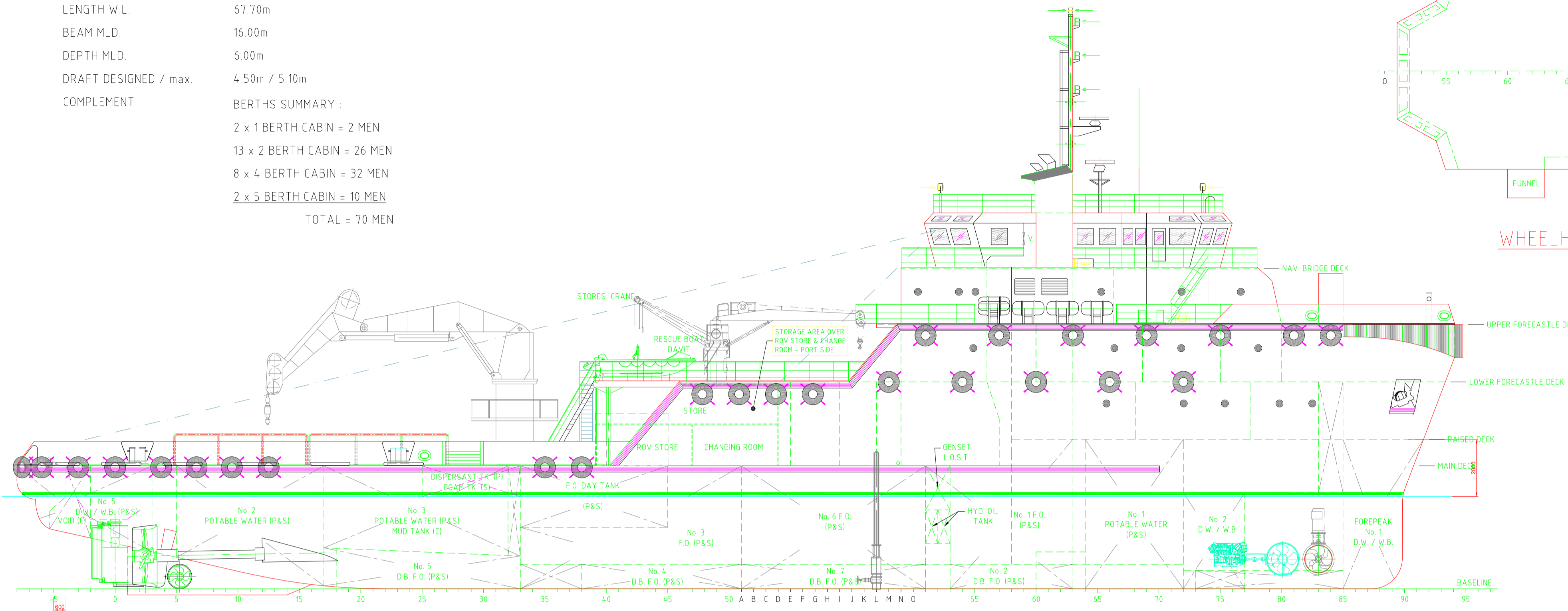


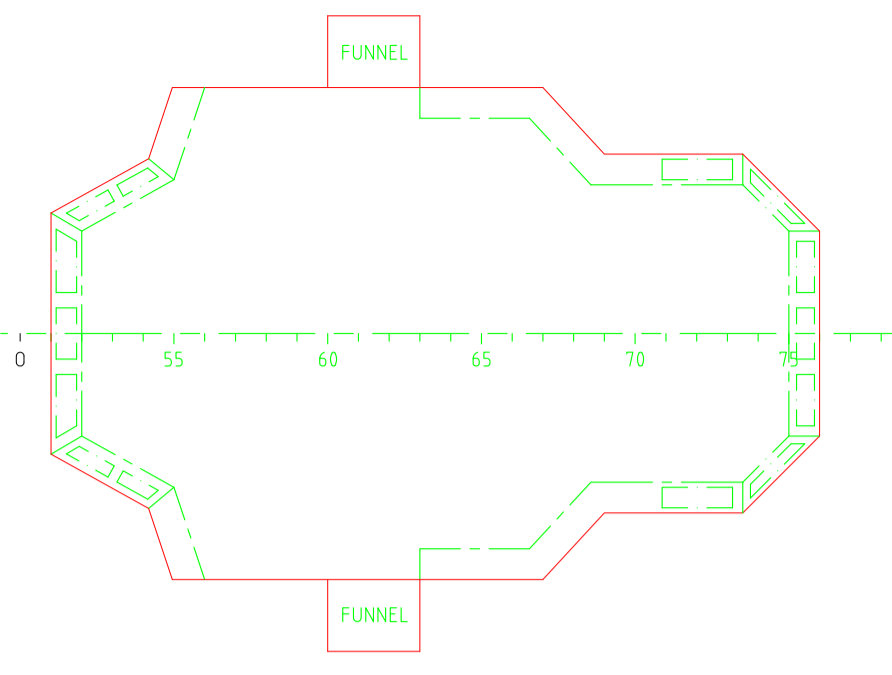
PRINCIPAL PARTICULARS:

LENGTH O.A. 70.25m
 LENGTH W.L. 67.70m
 BEAM MLD. 16.00m
 DEPTH MLD. 6.00m
 DRAFT DESIGNED / max. 4.50m / 5.10m
 COMPLEMENT

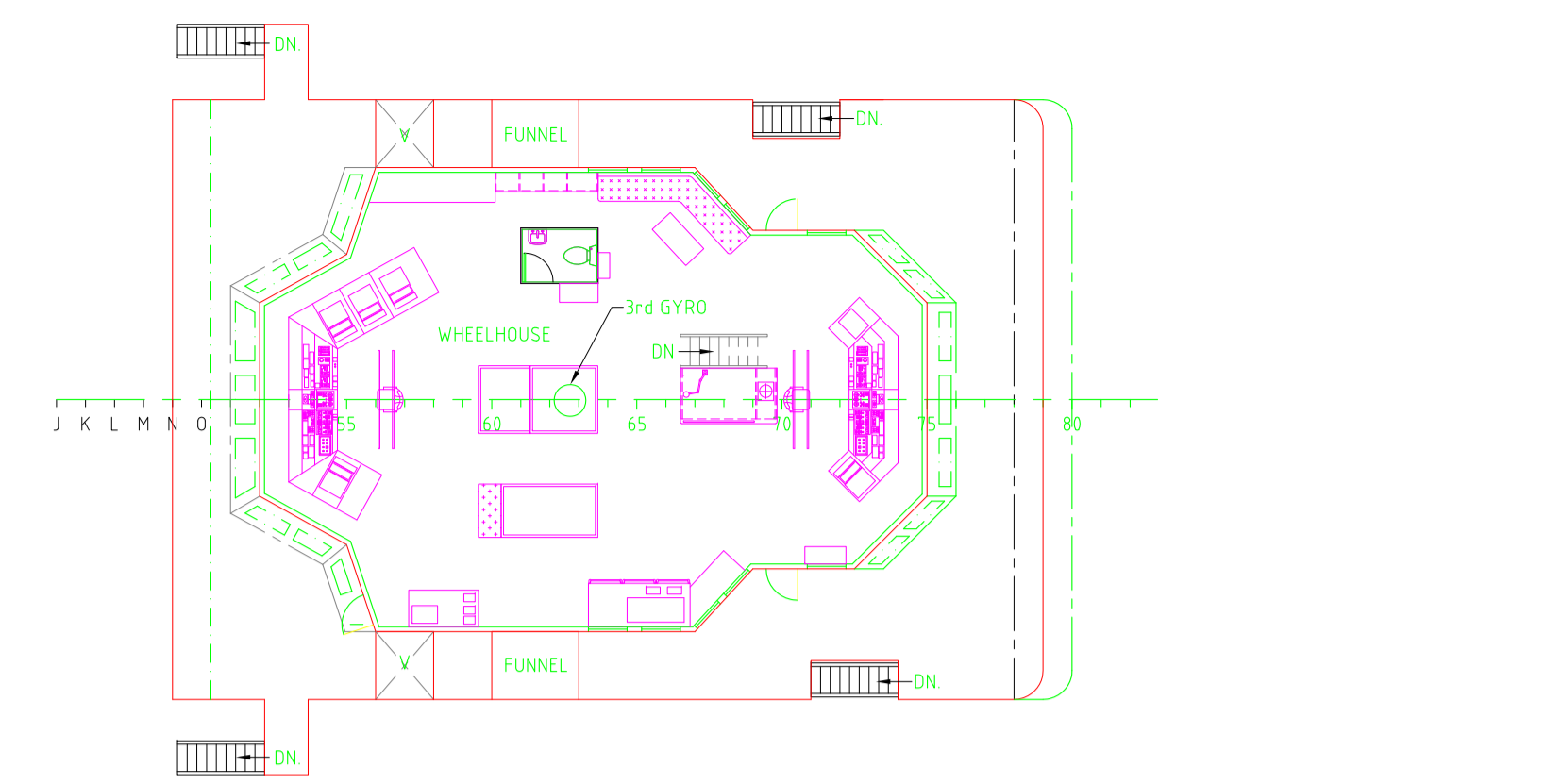
BERTHS SUMMARY :
 2 x 1 BERTH CABIN = 2 MEN
 13 x 2 BERTH CABIN = 26 MEN
 8 x 4 BERTH CABIN = 32 MEN
 2 x 5 BERTH CABIN = 10 MEN
TOTAL = 70 MEN



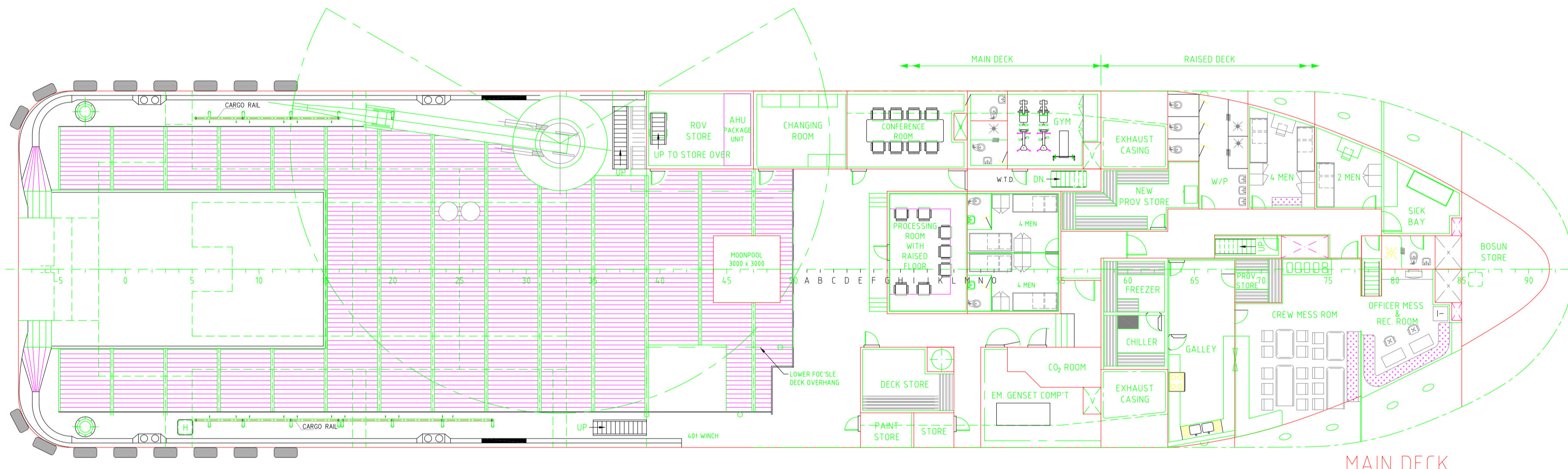
OUTBOARD PROFILE
 FRAME SPACING 600mm THROUGHOUT



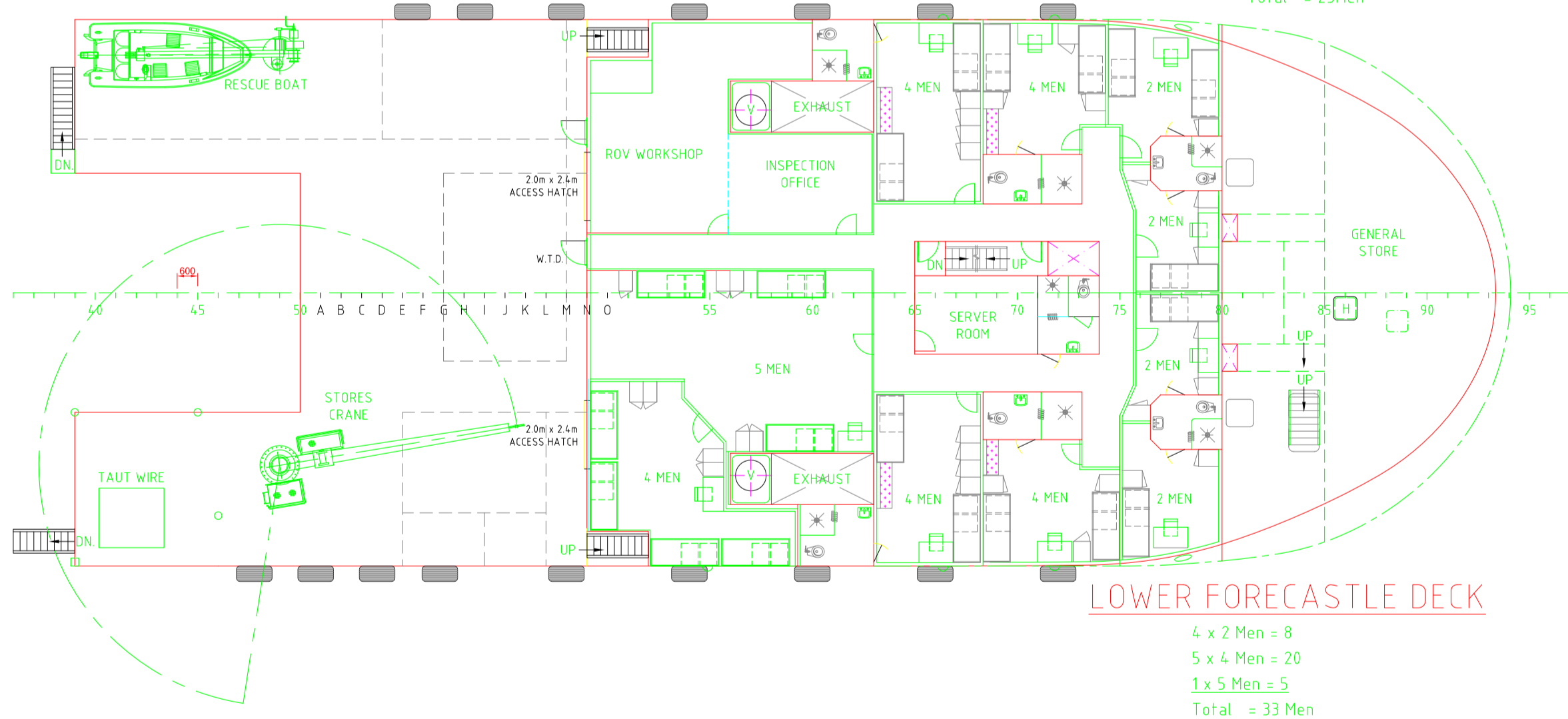
WHEELHOUSE TOP



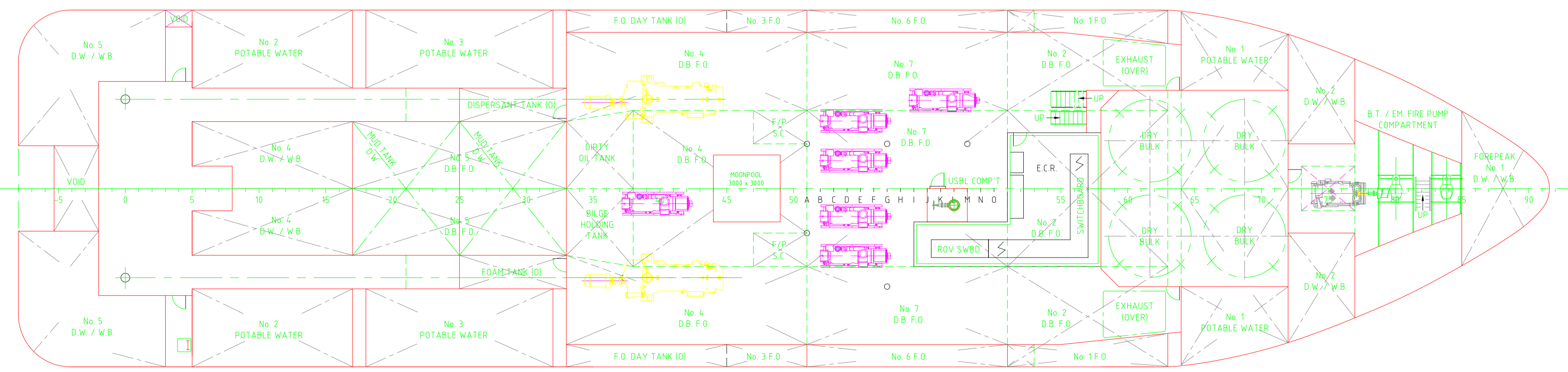
NAV. BRIDGE DECK



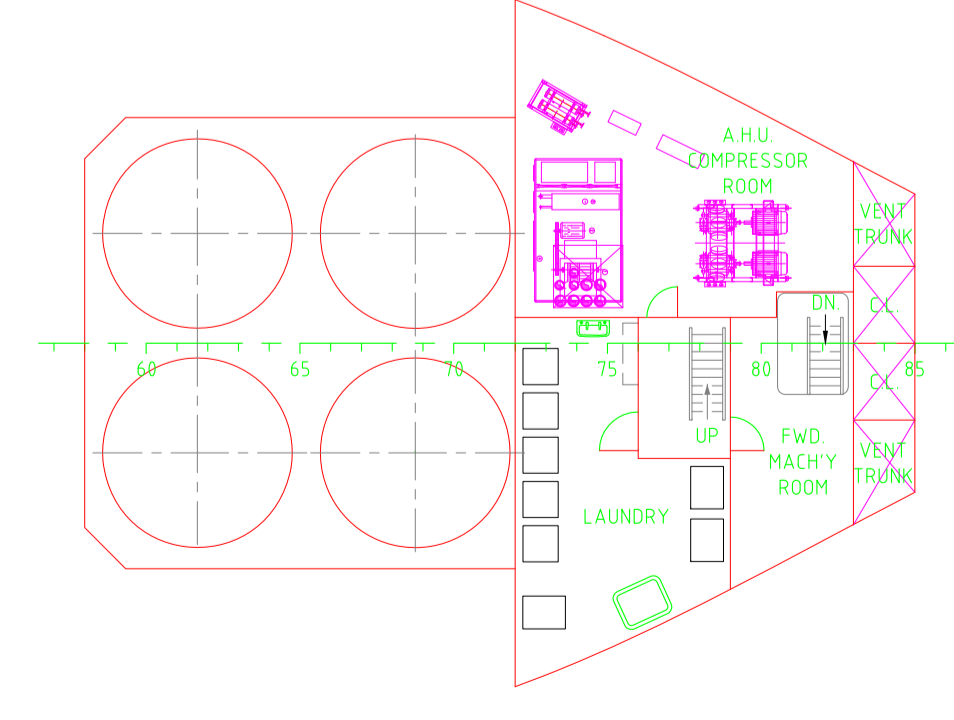
MAIN DECK
 1 x 2 Men = 2
 3 x 4 Men = 12
Total = 14 Men



LOWER FORECASTLE DECK
 4 x 2 Men = 8
 5 x 4 Men = 20
 1 x 5 Men = 5
Total = 33 Men



BELOW MAIN DECK



ACCOMMODATION TWEEN DECK

RE-INSTALL KNUCKLE CRANE	4	MY	IM	26/9/2020
ASBUILT CREW ACCOMMODATION - OWNERS REQUEST	3	IJR	DCF / ET	14/02/16
DESCRIPTION	REV	DRN BY	CHK BY	DATE

CLIENT:
MICLYN EXPRESS OFFSHORE

TITLE : GENERAL ARRANGEMENT PLAN			
SHIP NAME : MICLYN ENTERPRISE			
CONTRACT NO.:	DRAWING NO.:	MEO-MEOE-GAP-001	
DRAWN: IJR	REV. NO.: 4	SCALE: 1:100	
CHECKED: DCF	SHEET NO.: 1 OF 1	SIZE: A1	
APPROVED: ERIK TING	DATE: 26/9/2020		



Main Office (Singapore):
 No.3 Harbour Front Place #11-01/04 Harbour Front Tower 2
 Singapore 099214
 Tel: (65) 43456211 Fax: (65) 42754212
www.miclynexpressoffshore.com

This document contains Confidential Proprietary Information and shall not be Copied, Reproduced, Used, Transferred to other Documents or Disclosed to others for any purpose unless Authorized by MEO.