

Miclyn 2510

Flat Top Deck Cargo Barge

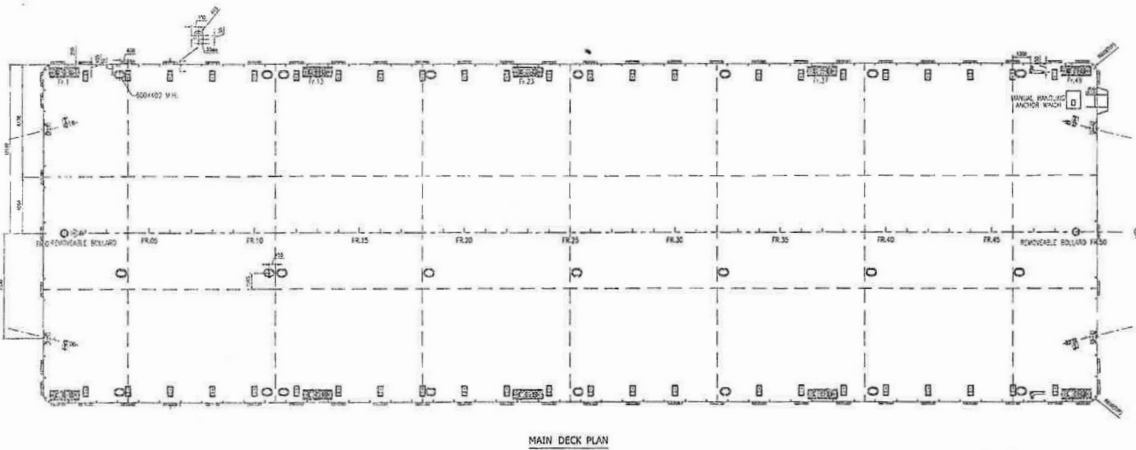
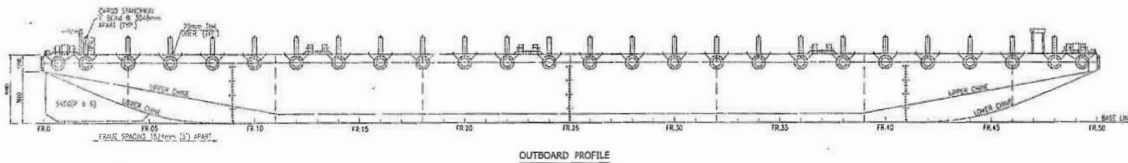
GENERAL

Year Built	2008
Flag / Port of Registry	Indonesia
Official Number	NA
Class / classification	Bureau Veritas
GRT/NRT	2,225 t / 667 t
Length Overall	250 ft (76.20m)
Breadth	80 ft (24.38 m)
Depth Loaded	16 ft (4.88 m)
Draft Loaded	12.6 ft (3.80 m)
Dead weight	4,900 t (approx.)
Deck Loading	15 t / m ²
Transverse Bulkhead	Seven (7)
Longitudinal Bulkhead	Two (2)



DECK EQUIPMENT

Anchor Winch	1 x hand operated anchor winch
Anchor	1 x 2,100 kg stockless bower anchor
Smit Brackets	4 x smit towing brackets - P&S, fwd and aft
Stanchions	24 stanchions on each side
Navigation Lights	1 set solar type, P&S at fwd and aft
Mooring Bollards	8 sets double mooring bollards each side (deck)
Other	Barge is all welded steel construction with flush main deck and twin skegs.



PRINCIPAL DIMENSIONS

LENGTH OVERALL	76.200 M (250'-0")
BREADTH MOULDED	24.384 M (80'-0")
DEPTH MOULDED	4.880 M (16'-0")
DRAFT LOADED	3.800 M (12'-6")
DECK LOADING	15 MT/M ²

SHEEP & CO. LTD.
NOT REVIEWED
1.9 MAY 2008
JAN SIGURDSEN



REV.	DESCRIPTION	DATE	DRAWING	CHKD	APPV.
1	ISSUED FOR APPROVAL				

THIS DRAWING IS THE PROPERTY OF Solid-Free OFFSHORE CO. LTD. ALL RIGHTS RESERVED. NO PARTS OF THIS DRAWING MAY BE REPRODUCED OR TRANSMITTED IN ANY FORM OR BY ANY MEANS, ELECTRONIC OR MECHANICAL, WITHOUT THE WRITTEN PERMISSION OF Solid-Free OFFSHORE CO. LTD.

DESIGNER: Solid-Free Offshore Solutions Limited
25, Colindale Avenue, London NW9 1QB, UK
Tel: +44 (0)20 8846 2000 Fax: +44 (0)20 8846 2001
E-mail: info@solid-free.com

TITLE: GENERAL ARRANGEMENT

PROJECT: TANKER OPERATIONAL SUPPORT CO. LTD. TMS REF: 01-1018

FIGURE: 250' x 80' x 16'
DECK CARGO BARGE WITH BOLLARD TANKS

SCALE: 1/8" = 1'-0"
SHEET: 1 OF 1
DATE: 01/05/08
DRAWING NO.: SFP-01018-001
REV.: 0

Particulars are believed to be correct but not guaranteed. Owners reserve the rights to amend the specifications without notifications. Particulars are entirely without warranty as to correctness and interested parties must inspect vessel's certificates, drawings or physical inspection of vessel.