

MEO MONARCH 2



65M 7145BHP DP2 / OSV



KEY PARTICULARS

- Built 2015
- AHTS / PSV / SSV
- 600T deck carrying load
- 50 pax accommodation
- 90.00 T BP
- Class 1, Fi-Fi Ship



WWW.MEOGROUP.COM
2020

VESSEL SPECIFICATIONS

PRINCIPAL PARTICULARS

YEAR BUILT	2015
PLACE BUILT	Wuchang Ship Yard, China
DESIGN	Focal Marine & Offshore (Focal 680)
FLAG	Indonesia
LENGTH OVERALL	64.80 m
LENGTH BP	60.00 m
BREADTH MOULDED	16.00 m
DEPTH MOULDED	6.20 m
DRAFT (MAX)	5.00 m
FREEBOARD (SLL)	1209 mm
CLASS	BV
NOTATION	1 x Hull x Mach, Tug; Anchor Handling Vessel; Fire Fighting Ship 1; Oil Recovery Ship; Supply Vessel - Oil Product FP > 60°C, LHNS; SP50, Unrestricted Nav, x DYNAPOS AM/ATR
GRT/ NRT	2491.00 T / 748.00 T
DEADWEIGHT	1786.60 T
BOLLARD PULL	90.00 T

DECK PARTICULARS

CLEAR DECK AREA	435.00 m ²
DECK CARRYING LOAD	600.00 T
DECK STRENGTH	7.00 T/m ²

PERFORMANCE

MAXIMUM SPEED	14 Knots @ 25.00 T/24hrs
ECONOMIC SPEED	10 Knots @ 12.00 T/24hrs

PROPULSION SYSTEMS

MAIN ENGINES	2 x Daihatsu 8DKM-28e, 3572 BHP, 2666 kW @ 750 RPM, Total 7145 BHP
AUXILIARY ENGINES	3 x Caterpillar C18, 450 kW @ 1500 RPM
EMERGENCY GENERATOR	Cummins QSB7-DM, 122 kW @ 1500 RPM
SHAFT GENERATOR	3 x Leroy Somer LSAM 51.2VL90, 1600 kW @ 1500 RPM
BOW THRUSTER	2 x Brunvoll CPP, 10 T Thrust
STERN THRUSTER	Brunvoll CPP, 10 T Thrust
PROPELLERS	2 x NGC CPP in Kort Nozzles, NCP85
STEERING GEAR SYSTEM	2 x Electro Hydraulic Interfaced w/ DP system, 45 deg High Lift "Flap" Type
RUDDER	2 x Electro Hydraulic Interfaced w/ DP system, 45 deg High Lift "Flap" Type

TANK CAPACITIES

FUEL OIL / FRESH WATER	530.00 m ³ / 367.00 m ³
DRILL / BALLAST WATER	584.80 m ³
LIQUID MUD / BRINE	380.30 m ³
BILGE / BALLAST WATER	13.20 m ³
DRY BULK	150.00 m ³ , 4 x 37.50 m ³ per tank

CARGO DISCHARGE CAPACITIES

FUEL OIL PUMP	100 m ³ /hr @ 60 m head
FRESH WATER PUMP	100 m ³ /hr @ 70 m head
DRILL WATER PUMP	100 m ³ /hr @ 70 m head
LIQUID MUD PUMP	2 x 70 m ³ /hr @ 70 m head
BRINE PUMP	2 x 70 m ³ /hr @ 70 m head
BILGE/BALLAST/FIRE/GS	100 m ³ /hr @ 70 m head
DRY BULK COMPRESSOR	2 x 780 m ³ /hr @ 80 PSI

DP SYSTEM

DP2, Kongsberg, 2 DGPS, Fanbeam, 3 Anemometers, 3 Motions Sensors, Independent Joystick

DECK EQUIPMENT

ANCHORS & CHAIN	2 x HY-14 HHP Anchor, 1900 / 1905 kg
TUGGER WINCH	2 x Electro Hydraulic 10 T @ 15 m/min,
CAPSTAN	Drum Capacity 250 m x 22 mm dia
ANCHOR WINDLASS C/W BOW	2 x Electro Hydraulic 10 T @ 15 m/min Mac Gregor Electro hydraulic c/w Double gypsies & warping ends
CRANE	SWL 2 T @ 15 m radius

ANCHOR HANDLING & TOWING EQUIPMENT

AH/TOWING WINCH	MacGregor Hydraulic Anchor Handling/Towing Winch 1500m x 64mm Dia SWR @ 10 layers
AH/TOWING DRUM CAP.	1500 m x 64 mm
SPARE REEL DRUM CAP.	1500 m (L) x 64 mm (Dia)
LINE PULL @ FIRST LAYER	150 T at low speed
BRAKE HOLDING	250 T
TOWING PIN	2 x SWL 250 T
SHARK JAW	SWL 250 T
STERN ROLLER	SWL 250 T, 4.4 m (L) x 1.7 m (Dia)

ACCOMMODATION

BERTHS	8 x 4, 5 x 2, 8 x 1 Berths
TOTAL PAX	50

EXTERNAL FIRE-FIGHTING EQUIPMENT

FI-FI NOTATION	Fire Fighting Ship 1 w/ Fixed Water Spray System
FI-FI MONITORS	2 x 1200 m ³ /hr, 120 m Throw Length
FI-FI PUMP	2 x 1860 m ³ /hr

LIFE-SAVING EQUIPMENT

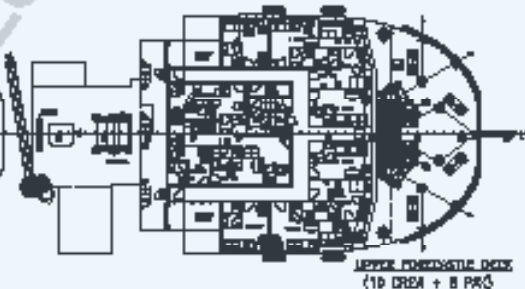
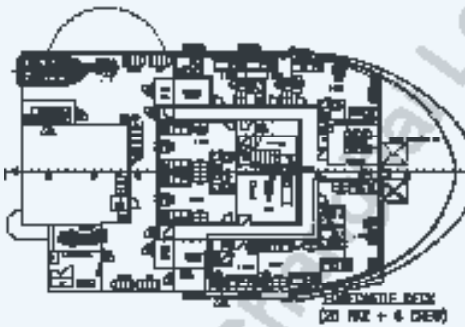
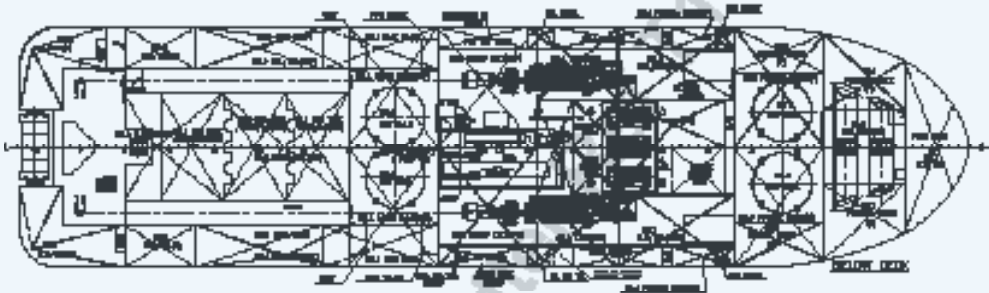
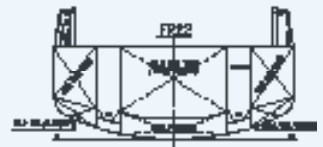
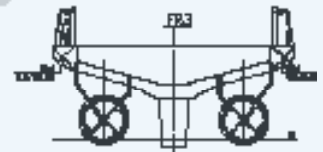
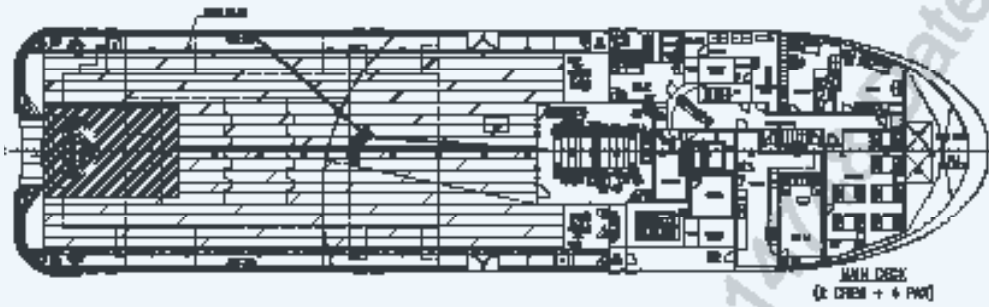
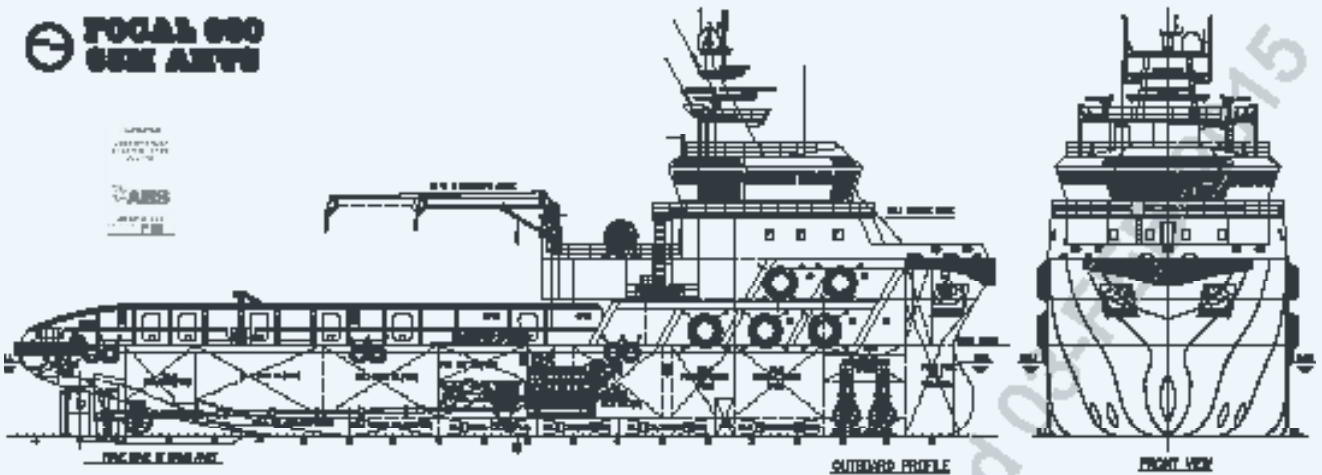
LIFE RAFTS	8 X 20 men, SOLAS Compliant
RESCUE BOAT C/W DAVIT	1 x 6 men, 20 HP Outboard Engine, 50 L Fuel, SOLAS Compliant

VESSEL WORK HISTORY

END USER	WORK LOCATION	END DATE	SCOPE OF WORK
ENI East Sepinggan Ltd	Indonesia	2020	DP2 offshore support duties
Petronas Carigali	Malaysia	2019	AHTS Support Duties / Pairing tug for MC1
Pertamina EP	Indonesia	2019	DP anchor handling support
Petronas Carigali Sdn Bhd	Malaysia	2019	Anchor handling, towing and supply duties
Sapura Offshore Sdn Bhd	Malaysia	2018	DP2 offshore support duties
Sea Swift Pty Ltd	Indonesia	2018	LCT towage
JOB Pertamina Petrochina East Java	Indonesia	2018	Static tow and standby for FPSO
PHE West Madura Offshore	Indonesia	2018	DP2 anchor handling support
Sarawak Shell Berhad	Malaysia	2018	Accommodation Work boat supply and offshore support duties
Shell Australia	Australia	2016	Barge towage for Prelude project
Inpex Australia	Australia	2016	Barge towage for Ichthys project
Franmarine Underwater Services	Christmas Island	2016	ROV and diving support duties
MMA Australia	Dampier / Batam	2016	Towage of 2 barges
Technip Australia	Australia	2016	Anchor handling, towing and supply duties
Technip Australia	Australia	2016	Transportation of project cargo
Shell Australia	SEA / Australia	2016	General offshore and support duties
Total E&P Borneo B.V.	Brunei	2015	Transportation of project cargo
Murphy Sarawak Oil Company Ltd.	Malaysia	2015	Anchor handling, towing and supply duties

**FOCAL 600
6000 TONS**

CLASSIFICATION SOCIETY
AISC
 ACCORDING TO
 RULES FOR
 CONSTRUCTION



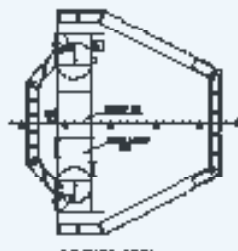
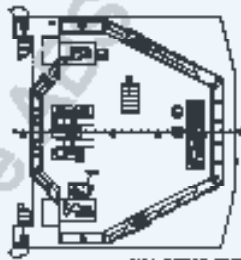
PRINCIPAL PARTICULARS

- LENGTH O/L _____ 64.00 M
- LENGTH B/P _____ 59.00 M
- BEAM M/L _____ 16.00 M
- DEPTH M/L _____ 6.00 M
- DEPTH FORWARD _____ 6.00 M
- DEPTH AFTWARD _____ 6.00 M
- COMPLIANCE _____ **IS CODE**

- DECK SPACE _____ 3 x 2,000 SQ
- TOTAL SPACE _____ 52 KTS
- ROLLING PAUL _____ 90 T

APPROXIMATE CARGO CAPACITIES

- DECKSPACE _____ 1,000 T
- DECK SPACE _____ 400 M³ ST T/M³
- SIDE CATCH _____ 500 T
- DECK SPACE _____ 500 M³
- DECK SPACE _____ 500 M³
- DECK SPACE _____ 300 M³
- DECK SPACE _____ 300 M³
- DECK SPACE _____ 100 M³



CLASSIFICATION SOCIETY
AISC
 ACCORDING TO
 RULES FOR
 CONSTRUCTION

THIS VESSEL IS TO BE CONSTRUCTED IN ACCORDANCE WITH THE
 REQUIREMENTS OF THE RULES FOR CONSTRUCTION, AND THE VESSEL IS TO
 BE CLASSIFIED AS A 6000 TONS TUG BOAT WITH 6000 TONS OF
 CARGO CAPACITY.

NO.	DESCRIPTION OF WORK	DATE	BY
1	GENERAL ARRANGEMENT		
MICLYN EXPRESS OFFSHORE			
WUCHANG BIFUELING INDUSTRY			
64.0M ANCHOR HANDLING TUG / OIL RECOVERY / SUPPLY VESSEL "FOCAL 600"			
DESIGN	SCALE	DATE	BY
DESIGN	SCALE	DATE	BY
DESIGN	SCALE	DATE	BY
DESIGN	SCALE	DATE	BY