



Express 100

Monohull Fast Multi-Role Support Vessel

PRINCIPAL PARTICULARS

| | |
|-----------------|--|
| Year Built | 2016 |
| Place Built | Penguin Shipyard Int Pte, Ltd. Singapore |
| Design | Flex-42 Crewboats |
| Flag | Malaysia |
| Length Overall | 42.00 m |
| Length BP | 40.6 |
| Breadth Moulded | 8.00 m |
| Depth Moulded | 3.98 m |
| Draft (max) | 1.90 m |
| Freeboard (SLL) | 1.60 m |
| Class | BV |
| Notation | I, + HULL, + MACH, Crewboat, Sea Area 3 |
| GRT/ NRT | 239.00 T / 71.00 T |
| Deadweight | 140.00 T |

DECK PARTICULARS

| | |
|--------------------|-----------------------|
| Clear Deck Area | 110 m ² |
| Deck Carrying Load | 60.00 T |
| Deck Strength | 2.50 T/m ² |

PERFORMANCE

| | |
|----------------|-------------------------------------|
| Maximum Speed | 30 Knots @ 878 Liters/hour @ 35 DWT |
| Economic Speed | 28 Knots @ 729 Liters/hour @ 35 DWT |

PROPULSION SYSTEM

| | |
|----------------------|--|
| Main Engines | 3 x Caterpillar C32 ACERT IMO Tier 2, 1450 BHP, 1081 kW @ 2300 RPM, Total 4350 BHP |
| Auxiliary Engines | 3 x Caterpillar C4.4, 122 BHP, 86 kW , Total 366 BHP |
| Portable Generator | Nil |
| Bow Thruster | 1 x Electro-hydraulic @ 132 BHP |
| Propellers | 3 x Fixed pitch propellers, Ni-Al-Bronze, 5 blades |
| Steering Gear System | 2 x Electro Hydraulic Pump System (415 V, 3Phase 50 Hz) |
| Rudder | 2 x Electro Hydraulic Pump System (415 V, 3Phase 50 Hz) |

TANK CAPACITIES

| | |
|-------------|-----------------------|
| Fuel Oil | 100.00 m ³ |
| Fresh Water | 20.00 m ³ |

CARGO DISCHARGE CAPACITIES

| | |
|------------------|---|
| Fuel Oil Pump | 23 m ³ /hr @30 m head, 5.5 kW/1450 RPM |
| Fresh Water Pump | 3.8 m ³ /hr @25 m head, 0.75 HP (0.55 kW) 2870 RPM |
| Bilge | 10 m ³ /hr @10 m head, 1.5 kW/2900 RPM |



DECK EQUIPMENT

| | |
|-------------------------|--|
| Anchor Windlass c/w Bow | 1 x Electro Hydraulic Winch c/w Wire Rope, Chain & Single Anchor |
| Crane | Nil |

ACCOMMODATION

| | |
|-----------------|------------------------|
| Passenger Seats | 80 pax, Business Class |
| Crew | 88 |

EXTERNAL FIRE-FIGHTING EQUIPMENT

| | |
|-----------------------|---|
| Fi-Fi Notation | 2 x SFP 250X350, 600m ³ /hr @115m head |
| Fi-Fi Monitors | 2 x 600 m ³ /hr, 115 m Throw Length |
| Fi-Fi Pump | 2 x 600 m ³ /hr, 115 m Throw Length |
| Oil Dispersant System | 0.20 m ³ |

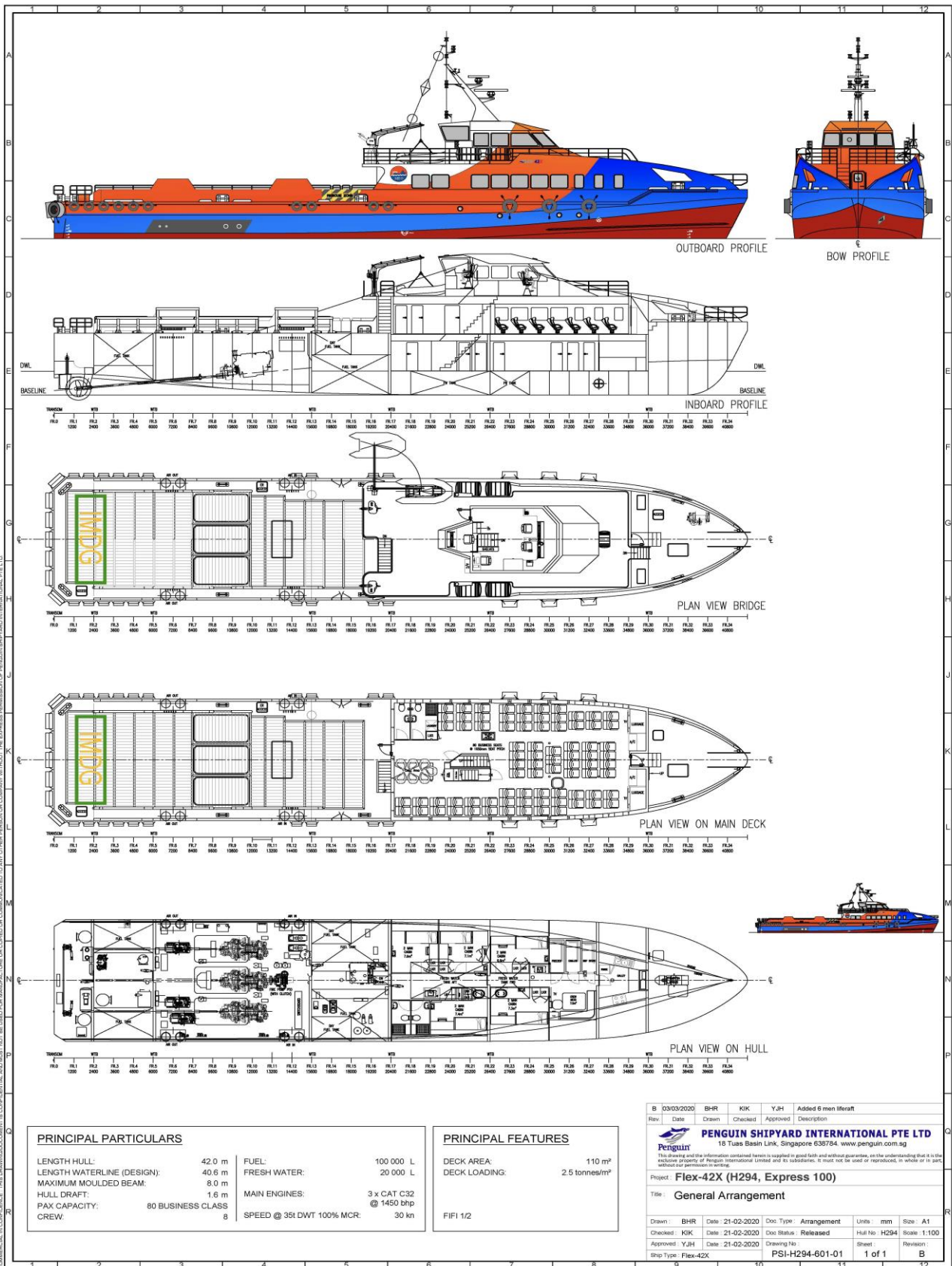
INTERNAL FIRE-FIGHTING & ANTI-POLLUTION EQUIPMENT

| | |
|------------------------|--|
| Emergency Fire Pump | DESMI, 50m ³ /hr @30m head, 11 kW |
| CO2 Fi-Fi System | Aerosal System for Engine Room |
| Fire Detection & Alarm | APOLLO Smoke Detector & Fire Alarm in Living Room, Electronic Devices LTD : Smoke with Heat Detector & Fire Alarm in E/R |

LIFE-SAVING EQUIPMENT

| | |
|-----------------------|--|
| Life Rafts | 4 x 65 men, 1 x 6 men, SOLAS Compliant |
| Rescue Boat c/w Davit | Nil |

Particulars are believed to be correct but not guaranteed. Owners reserve the rights to amend the specifications without notifications. Particulars are entirely without warranty as to correctness and interested parties must inspect vessel's certificates, drawings or physical inspection of vessel.



PRINCIPAL PARTICULARS

LENGTH HULL: 42.0 m
 LENGTH WATERLINE (DESIGN): 40.6 m
 MAXIMUM MOULDED BEAM: 8.0 m
 HULL DRAFT: 1.6 m
 PAX CAPACITY: 80 BUSINESS CLASS
 CREW: 8

FUEL: 100 000 L
 FRESH WATER: 20 000 L
 MAIN ENGINES: 3 x CAT C32 @ 1450 bhp
 SPEED @ 35t DWT 100% MCR: 30 kn

PRINCIPAL FEATURES

DECK AREA: 110 m²
 DECK LOADING: 2.5 tonnes/m²
 FIFI 1/2

| Rev | Date | Drawn | Checked | Approved | Description |
|-----|------------|-------|---------|----------|----------------------|
| B | 03/03/2020 | BHR | KJK | Y.JH | Added 6 men liferaft |

PENGUIN SHIPYARD INTERNATIONAL PTE LTD
 18 Tuas Basin Link, Singapore 638784. www.penguin.com.sg

Project: Flex-42X (H294, Express 100)

Title: General Arrangement

| | | | | |
|---------------------|------------------|-----------------------------|---------------|--------------|
| Drawn: BHR | Date: 21-02-2020 | Doc Type: Arrangement | Units: mm | Size: A1 |
| Checked: KJK | Date: 21-02-2020 | Doc Status: Released | Hull No: H294 | Scale: 1:100 |
| Approved: Y.JH | Date: 21-02-2020 | Drawing No: PSI-H294-601-01 | Sheet: 1 of 1 | Revision: B |
| Ship Type: Flex-42X | | | | |

