



UNIWISE ADVANCER

5490BHP / AHTS

PRINCIPAL PARTICULARS

Year Built	2003
Place Built	Keppel Singmarine, Singapore
Design	Conan Wu
Flag	Thailand
Length Overall	60.00 m
Length BP	56.39 m
Breadth Moulded	16.00 m
Depth Moulded	5.50 m
Draft (max)	4.85 m
Freeboard (SLL)	0.65 m
Class	DNV GL
Notation	1A Fire Fighter(I) Tug
GRT/ NRT	1595.00 T / 478.00 T
Deadweight	1746.22 T
Bollard Pull	69.87 T (maximum), 65.04 T (average)

DECK PARTICULARS

Clear Deck Area	360.00 m ²
Deck Carrying Load	500.00 T
Deck Strength	5.00 T/m ²

PERFORMANCE

Maximum Speed	14 Knots @ 12 T/24 hrs
Economic Speed	12 Knots @ 8 T/24 hrs

PROPULSION SYSTEM

Main Engines	2 x Deutz BV9M628, 2714 BHP, 2025 Kw @ 1000 RPM, Total 5429 BHP
Auxiliary Engines	2 x Caterpillar 3408 DITA, 350 kW @ 1800 RPM
Emergency Generator	Perkins 1006TG2A, 90 kW @ 1800 RPM
Bow Thruster	Schottel CPP ST330, 7.50 T Thrust
Stern Thruster	1 X Kawasaki KT-328 3, 4.70 T Thrust
Propellers	2 x Schottel CPP SCP0714 XG
Steering Gear System	2 x Tenfjord Steering Gear SR622
Rudder	2 x High Lift Rudders HLR-S1750

TANK CAPACITIES

Fuel Oil	630.00 m ³
Fresh Water	280.20 m ³
Drill Water	762.60 m ³
Liquid Mud	209.90 m ³
Bilge	11.20 m ³
Ballast Water	762.60 m ³
Dry Bulk	150.00 m ³ , 4 x 36.80 m ³ per Tank



CARGO DISCHARGE CAPACITIES

Fuel Oil Pump	100 m ³ /hr @ 60 m head
Fresh Water Pump	100 m ³ /hr @ 60 m head
Drill Water Pump	100 m ³ /hr @ 60 m head
Liquid Mud Pump	2 x 60 m ³ /hr @ 60 m head
Bilge Pump	2 x 65 m ³ /hr @ 60 m head
Dry Bulk Compressor	2 x 25.6 m ³ /hr @ 5.6 bar

DECK EQUIPMENT

Anchors & Chain	2 x 1590 kg HHP, 14 Shackles (P), 18 Shackles (S), 34mm dia U2 Steel Stud Link Chains
Tugger Winch	2 x 10 T Pull Electro-Hydraulic @ 10 m/min
Capstan	2 x 5 T Pull @ 20/min
Anchor Windlass c/w Bow	5.6 T Pull @ 12 m/min
Crane	SWL 3.7 T @ 3.7 m Radius (max SWL), SWL 1.08 T @ 7.0 m Radius (max Radius)

ANCHOR HANDLING & TOWING EQUIPMENT

Anchor Handling/ Towing Winch	Zicom HWTW-150/52/2 Double Drum Waterfall Type
AH/Towing Drum Capacity	1000 m L x 52 mm Dia SWR
Spare Reel Drum Capacity	1000 m L x 52 mm Dia SWR
Line Pull @ First Layer	150 T @ 6.2 m/min (1st Layer)
Brake Holding	200 T Towing Drum, 200 T AH Drum
Towing Pin	SWL 200 T
Shark Jaw	SWL 300 T
Stern Roller	SWL 180 T, 3.5 m L x 1.5 m Dia

ACCOMMODATION

Berths	2 x 1, 2 x 2, 9 x 4 Berths
Total Pax	42

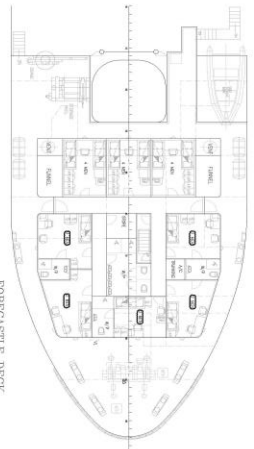
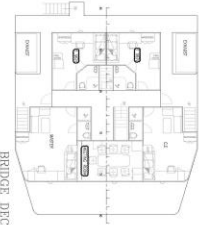
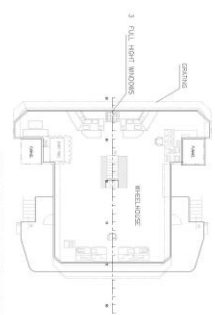
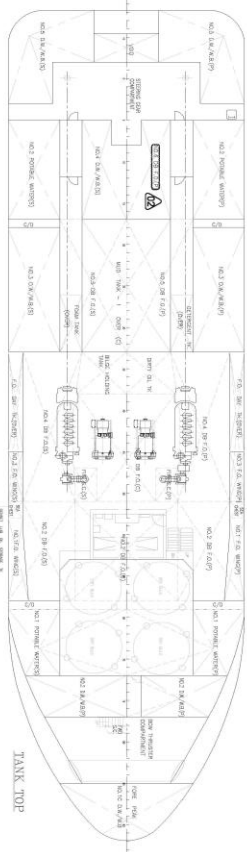
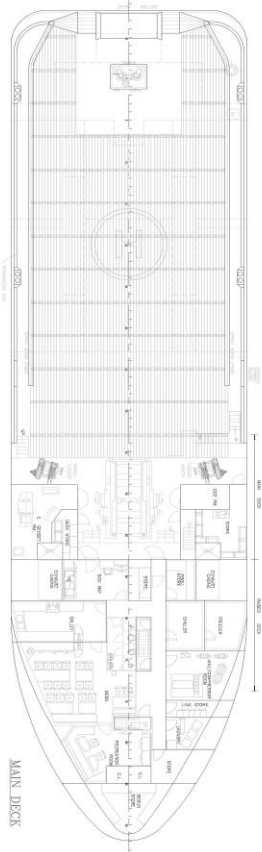
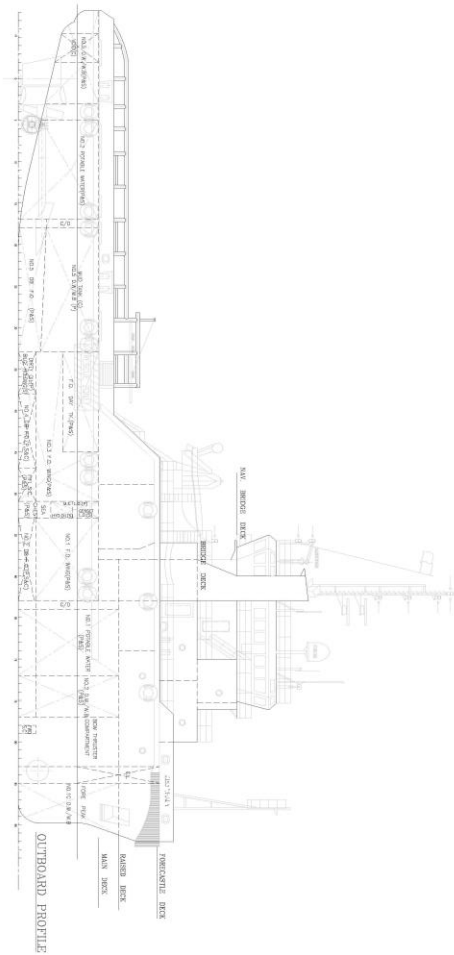
EXTERNAL FIRE-FIGHTING EQUIPMENT

Fi-Fi Notation	FIFI Class I - Remote Control
Fi-Fi Monitors	2 x Skum Foam/Water Capacity, 1200 m ³
Fi-Fi Pump	2 x 100 m ³ /hr at 150 m Height @ 14 Bar

LIFE-SAVING EQUIPMENT

Life Rafts	4 x 20 Men, SOLAS Compliant
Rescue Boat c/w Davit	1 x 6 Men, 25 HP of Outboard Eng, 30 L, SOLAS Compliant

Particulars are believed to be correct but not guaranteed. Owners reserve the rights to amend the specifications without notifications. Particulars are entirely without warranty as to correctness and interested parties must inspect vessel's certificates, drawings or physical inspection of vessel.



PRINCIPAL PARTICULARS

LENGTH O/A	60.00 M
LENGTH W/L	55.70 M
BEAM M/D.	16.00 M
DEPTH M/D.	6.50 M
DRAHT DESIGNED	4.50 M
COMPLEMENT	202 PERSONS
PORTABLE WATER	280 M ³
FUEL OIL	1000 M ³
D.W./S.W.B	208 M ³
LIQUID M/O	150 M ³
DRY BULK	360 M ³
DECK SPACE	360 M ²

<p>MEO MEDITERRANEAN EXPRESS OFFSHORE</p>	<p>GENERAL ARRANGEMENT PLAN</p> <p>SHIP NAME M/V EXPRESS ADVANTER</p>
<p>CLASSIFICATION M/V</p>	<p>TYPE OFFSHORE</p>
<p>REGISTRY CYP</p>	<p>REGISTRY CYPRUS</p>
<p>NET TONNAGE 100</p>	<p>GROSS TONNAGE 100</p>
<p>NET CUBIC METERS 100</p>	<p>GROSS CUBIC METERS 100</p>
<p>NET TONNAGE 100</p>	<p>GROSS TONNAGE 100</p>
<p>NET CUBIC METERS 100</p>	<p>GROSS CUBIC METERS 100</p>

USED FOR INFORMATION
This document is intended for information only and does not constitute an offer or a contract.

