

# C. 288

## Flat Top Deck

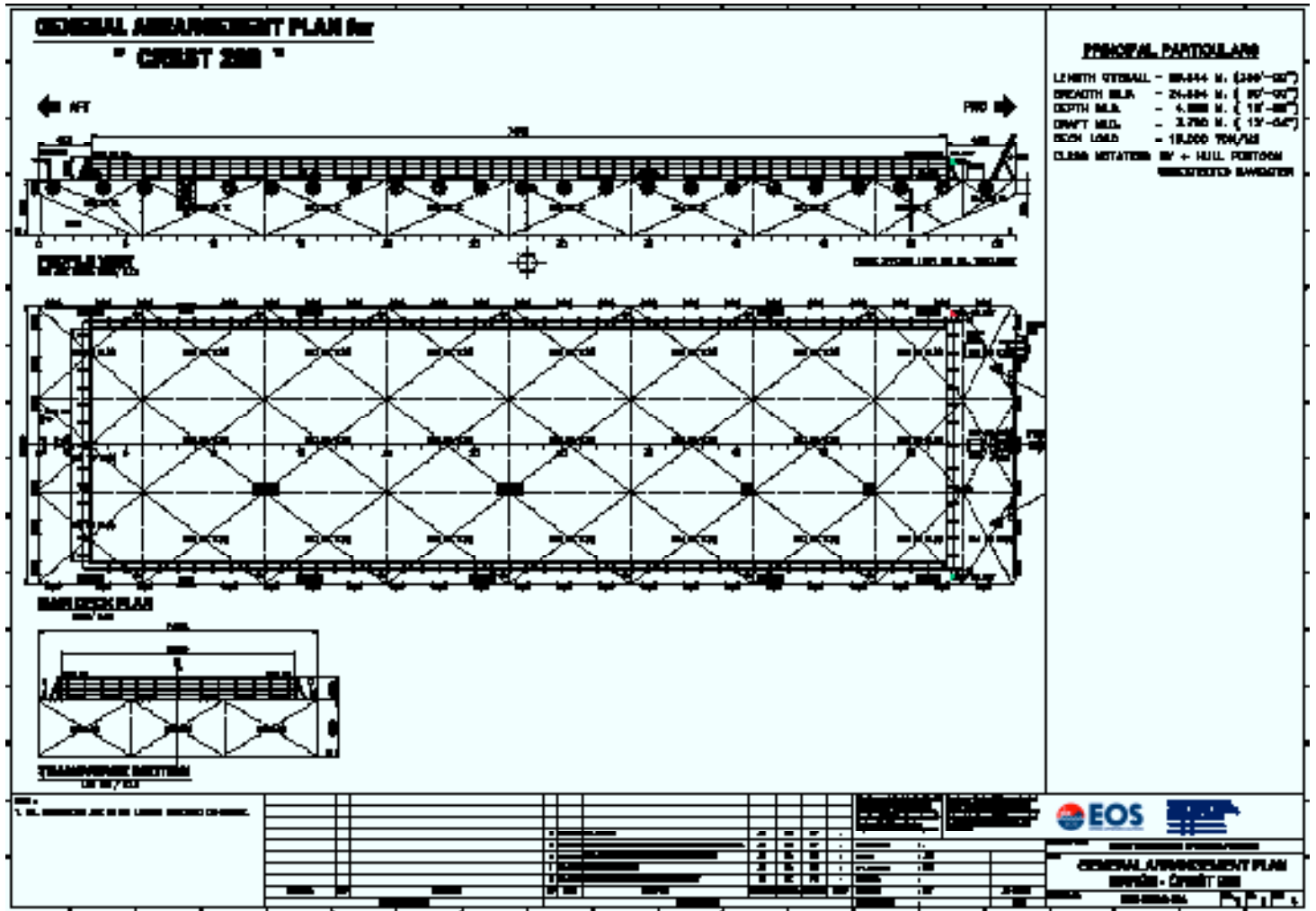
### GENERAL

Port of Registry	Fremantle
Classification	Bureau Veritas
Notation	+ Hull Pantoon
Year Built	2010
LOA	81.93 m (280 ft)
Breadth	24.38 m (80 ft)
Depth	4.88 m (18 ft)
GRT	2,620
Draft (Summer Loadline)	3.742 m
Deck Strength	15 t / m <sup>2</sup>
Deadweight	5,908 T
Lightship Weight	1,365.76 T



### DECK EQUIPMENT

Anchor Winch	1 x Manual Winch
Anchor	Stockless Anchor, 1500kg
Smit Brackets	3 x Forward
Stanchions	NA
Navigation Lights	3 x solar powered. Colreg type
Mooring Bollards	4 x deck type mooring bollards at Port 5 x deck type mooring bollards at Aft
Recovery Winch	1 x Hydraulic Winch at Forward
A-Frame	1 x at Forward
Others	Sidewall Cemented Deck Tire Fenders



Particulars are believed to be correct but not guaranteed. Owners reserve the rights to amend the specifications without notifications. Particulars are entirely without warranty as to correctness and interested parties must inspect vessel's certificates, drawings or physical inspection of vessel.