

# EOS 306

## Flat Top Barge

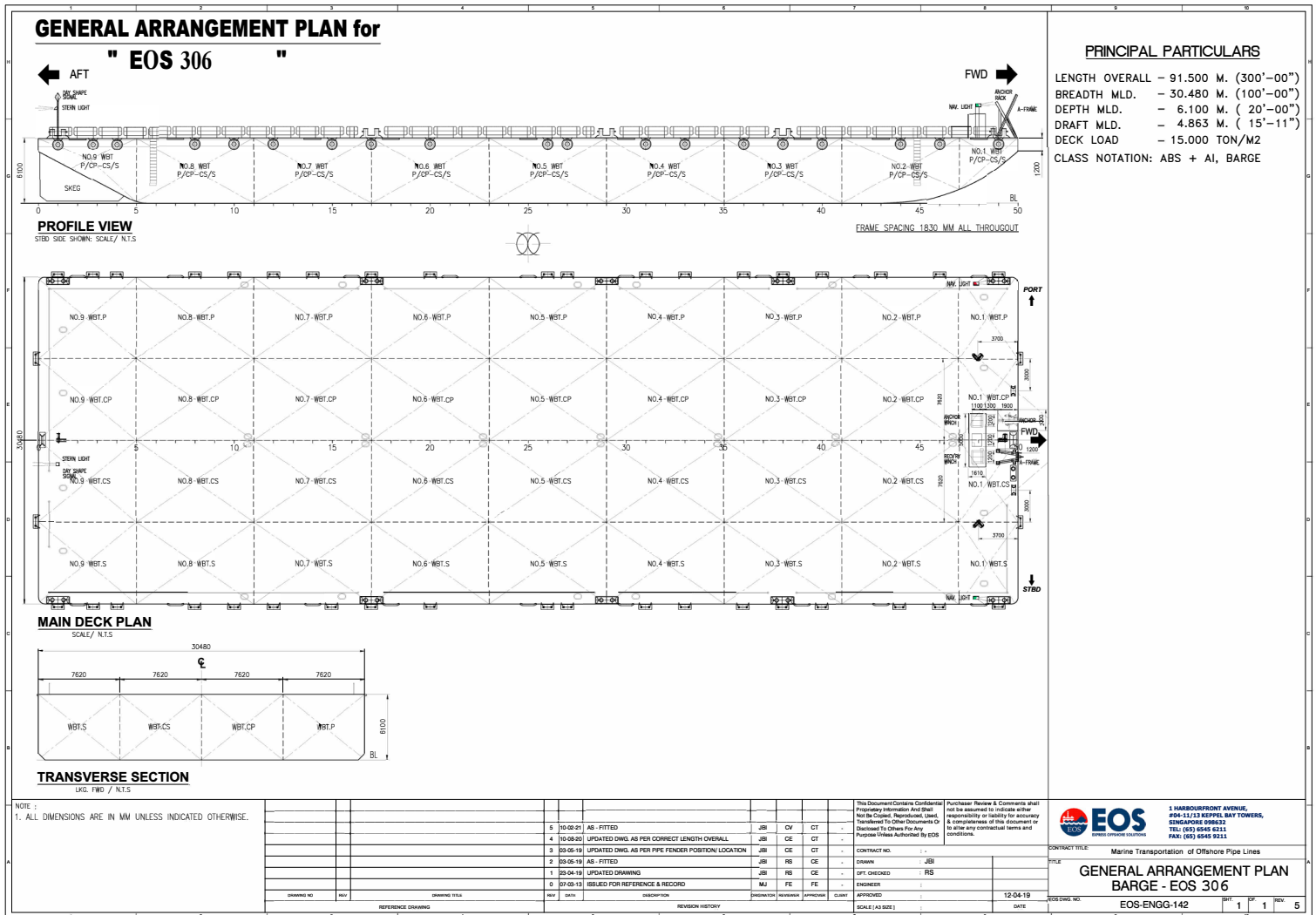
### GENERAL

Year Built	2012
Flag / Port of Registry	Australia
Class / classification	ABS / + A1 Barge
GRT	4,487t
Length Overall	100.6 m (300 ft)
Breadth	30.49 m (100 ft)
Depth Loaded	6.1 m (20 ft)
Deck Loading	15 t /m2
Draft (Summer Loadline)	4.833 m
Deadweight	10,584 T
Lightship Weight	2,394.50 T



### DECK EQUIPMENT

Anchor Winch	1 x Hydraulic Winch
Anchor	Stockless Anchor, 2280kg
Smit Brackets	3 x Forward 2 x Aft (Spare)
Stanchions	NA
Navigation Lights	3 x solar powered. Model 301
Mooring Bollards	5 x deck type mooring bollards at Port 5 x deck type mooring bollards at Aft
Recovery Winch	1 x Hydraulic Winch at Forward
A-Frame	1 x at Forward
Others	Hand-rail fitted Tire Fenders



Particulars are believed to be correct but not guaranteed. Owners reserve the rights to amend the specifications without notifications. Particulars are entirely without warranty as to correctness and interested parties must inspect vessel's certificates, drawings or physical inspection of vessel.