

## EOS 3305

330ft x 120ft x 20ft Ballastable Barge

### GENERAL

|                |                         |
|----------------|-------------------------|
| Length Overall | 100.58 m (330 ft)       |
| Breadth        | 36.57 m (120 ft)        |
| Depth Moulded  | 6.1 m (20 ft)           |
| Draft Moulded  | 4.50 m                  |
| Gross Tonnage  | 5844T                   |
| Net Tonnage    | 1753T                   |
| Deadweight     | 13,500T (approx)        |
| Deck Loading   | 15T/m2                  |
| Classification | ABS +A1 Barge           |
| Flag           | Singapore               |
| Built          | 2011                    |
| Draft (min)    | 0.9 m (5.2 m freeboard) |

### CHAIN BRIDLE ASSEMBLY

|                                      |
|--------------------------------------|
| SMIT Brackets (tow connection point) |
| Master Links, Towing Shackles        |
| Closed Chocks (capped fairleads)     |
| Towing bridle legs (chain)           |
| Tow Plate (triangular plate)         |



### ADDITIONAL DETAILS

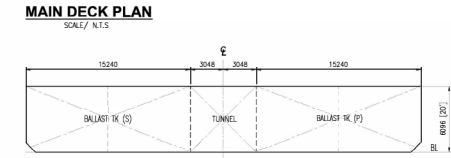
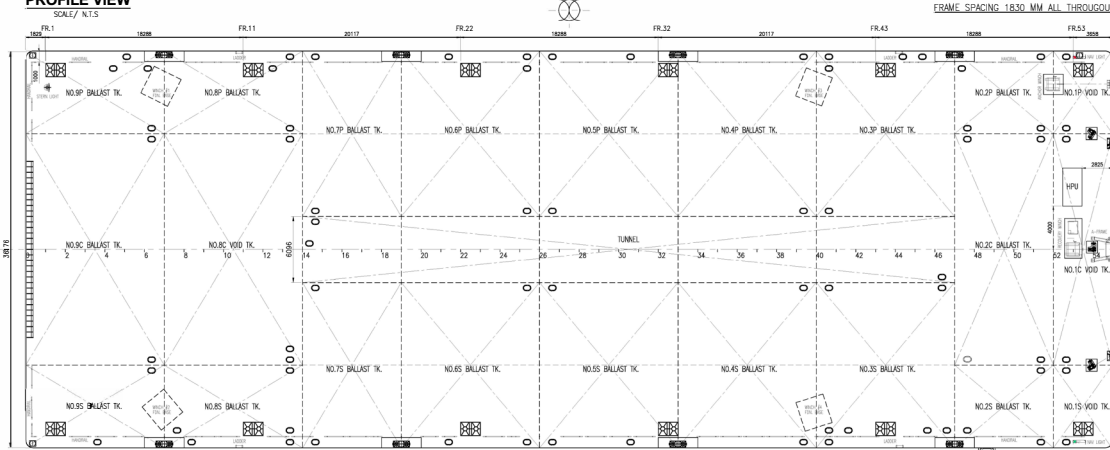
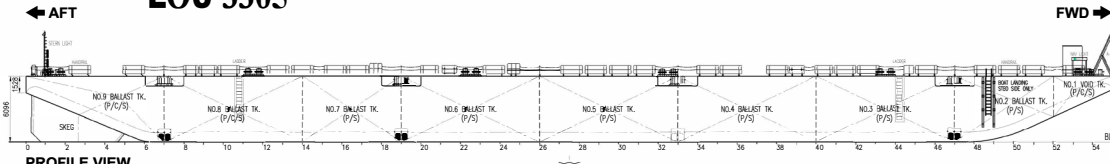
|  |
|--|
| Min Breaking Strength for Smit Towing Bracket 2 x 200T   |
| Min Breaking Strength for Towing Fairlead 2 x 200T       |
| All-Round Handrails                                      |
| Standard Tyre Fenders                                    |
| Flushed manholes marked with identification of each tank |
| Flush Access Ladder to Deck                              |
| Emergency Tow-Set up                                     |
| Navigation Light Stands                                  |

### DECK EQUIPMENT

|                   |  |
|-------------------|--|
| Anchor Winch      | 1 x Hydraulic Winch  |
| Anchor            | Stockless Anchor, 2100kg   |
| Smit Brackets     | 3 x Forward  |
| Stanchions        | NA   |
| Navigation Lights | 3 x solar powered. Colreg type   |
| Mooring Bollards  | 4 x recessed type mooring bollards at Port<br>4 x recessed type mooring bollards at Aft<br>6 x deck type mooring bollards at Port<br>6 x deck type mooring bollards at Aft |
| Recovery Winch    | 1 x Hydraulic Winch at Forward   |
| A-Frame           | 1 x at Forward   |
| Others            | Hand-rail fitted<br>Tire Fenders   |

Particulars are believed to be correct but not guaranteed. Owners reserve the rights to amend the specifications without notifications. Particulars are entirely without warranty as to correctness and interested parties must inspect vessel's certificates, drawings or physical inspection of vessel.

# GENERAL ARRANGEMENT PLAN for " EOS 3305 "



**PRINCIPAL PARTICULARS**  
 LENGTH OVERALL - 100.584 M.(330'-00")  
 BREADTH MLD. - 36.576 M.(120'-00")  
 DEPTH MLD. - 6.096 M.( 20'-00")  
 DRAFT LOADED - 4.750 M.( 15'-07")  
 DECK LOAD - 15.000 TON/M2  
 CLASS NOTATION: ABS + A1 BARGE

NOTE:  
1. ALL DIMENSIONS ARE IN MM UNLESS INDICATED OTHERWISE.

| NO. | DATE     | DESCRIPTION   | DESIGNED BY | CHECKED BY | APPROVED BY | SCALE | DATE     |
|-----|----------|---|-------------|------------|-------------|-------|----------|
| 12  | 06-03-21 | UPDATED DWG AS PER 1 x HPU RELOCATED AT FWD PORT SIDE   | JBI         | CE         | CT          | -     | -        |
| 11  | 19-02-21 | UPDATED DWG AS PER 1 x HPU RELOCATED AT FWD STD. SIDE   | JBI         | CE         | CT          | -     | -        |
| 10  | 09-02-21 | UPDATED DWG AS PER FOUR (4) PT. MOORINGS & HPUS REMOVED | JBI         | CE         | CT          | -     | -        |
| 9   | 13-09-20 | UPDATED DWG AS PER ADDITIONAL DECK EQUIPMENT ONSHORE    | JBI         | CE         | CT          | -     | -        |
| 8   | 03-03-20 | UPDATED DWG AS PER BOAT LANDING AT STBD SIDE FRAME #40  | JBI         | CE         | CT          | -     | -        |
| 7   | 02-03-20 | UPDATED DWG AS PER BOAT LANDING AT STBD. SIDE FRAME #25 | JBI         | RS         | CT          | -     | 02-03-20 |
| 6   | 30-01-20 | UPDATED DWG AS PER INSTALLED FWD-STD. BOAT LANDING      | JBI         | RS         | CT          | -     | 01-30-20 |
| 5   | 01-11-19 | UPDATED DWG AS PER HANDOVER LOCATION                    | JBI         | RS         | CT          | -     | 01-11-19 |

**EOS**  
 1 HARBORFRONT AVENUE,  
 #04-11/13 KEPPEL BAY TOWERS,  
 SINGAPORE 099633  
 TEL: (65) 6545 8211  
 FAX: (65) 6545 9211

CONTRACT TITLE: Marine Transportation of Offshore Pipe Lines  
 TITLE: GENERAL ARRANGEMENT PLAN BARGE - EOS 3305  
 EOS DWG NO: EOS-ENGG-036  
 SHEET NO: 1 OF 12