

EOS 3306

Flat Top Barge

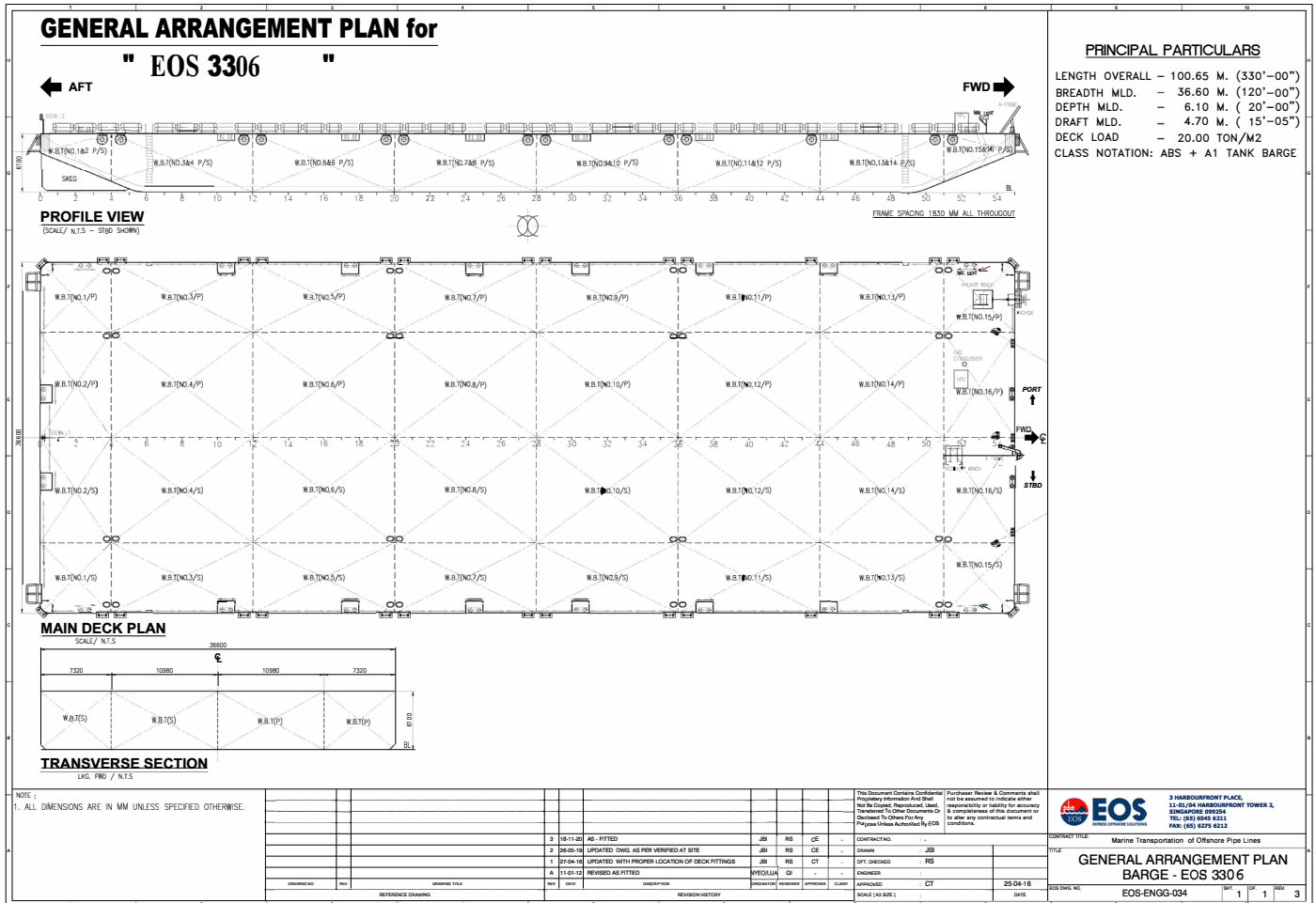
GENERAL

Year Built	2012
Flag / Port of Registry	Australia
Class / classification	ABS + A1 Barge
GRT	6,019 t
Length Overall	96.62 m (330 ft)
Breadth	36.60 m (120 ft)
Depth Loaded	6.1 m (20 ft)
Deck Loading	20 t / m ²
Draft (Summer Loadline)	4.707 m
Deadweight	13,160 T
Lightship Weight	2,946.00 T



DECK EQUIPMENT

Anchor Winch	1 x Hydraulic Winch
Anchor	Stockless Anchor, 2100kg
Smit Brackets	3 x Forward
Stanchions	NA
Navigation Lights	3 x solar powered. Colreg type
Mooring Bollards	6 x recessed type mooring bollards at Port 6 x recessed type mooring bollards at Aft 2 x deck type mooring bollards at Port 2 x deck type mooring bollards at Aft
Recovery Winch	1 x Hydraulic Winch at Forward
A-Frame	1 x at Forward
Others	Hand-rail fitted Tire Fenders



Particulars are believed to be correct but not guaranteed. Owners reserve the rights to amend the specifications without notifications. Particulars are entirely without warranty as to correctness and interested parties must inspect vessel's certificates, drawings or physical inspection of vessel.