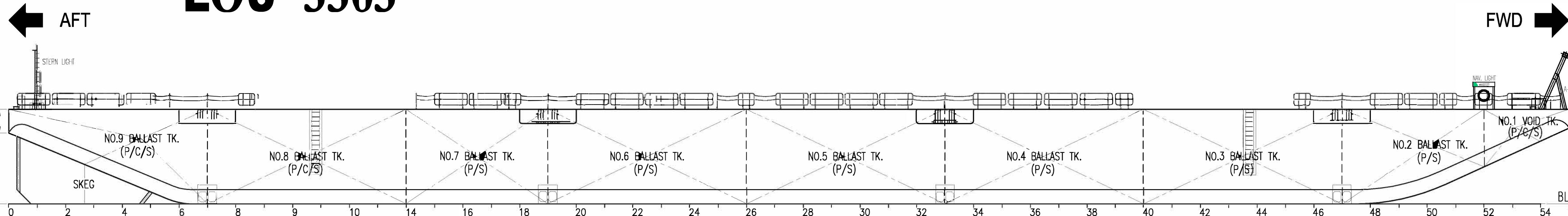


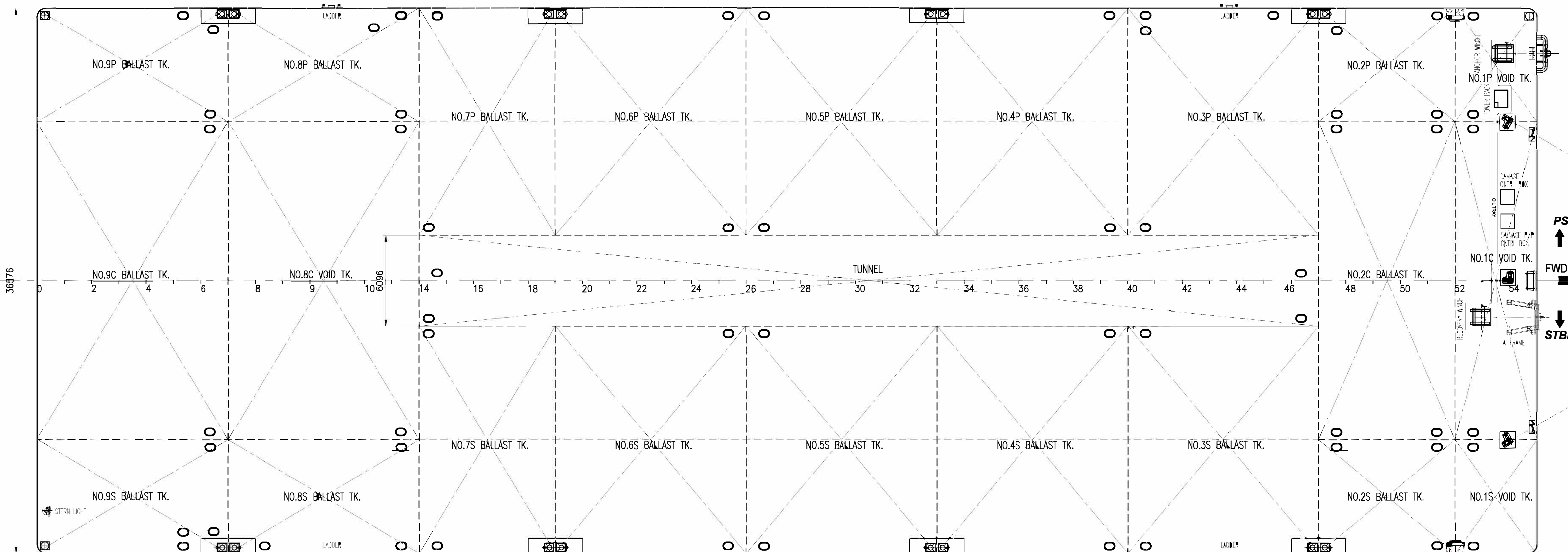
GENERAL ARRANGEMENT PLAN for

" EOS 3303 "

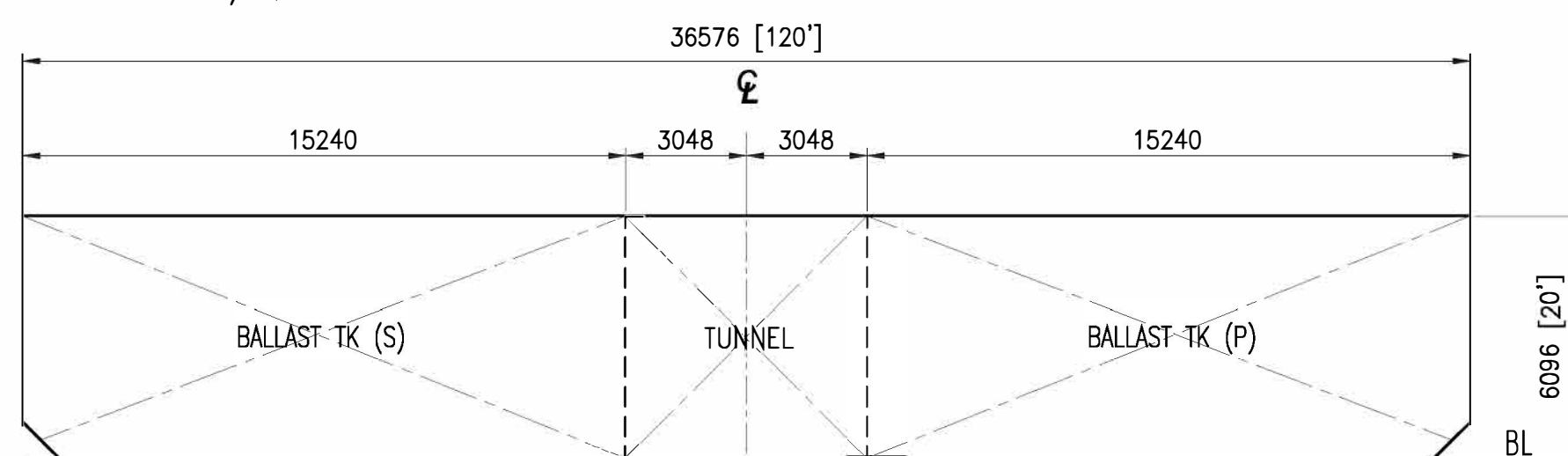


PROFILE VIEW
STBD SIDE SHOWN/ SCALE: N.T.S

FRAME SPACING 1830 MM ALL THROUGHOUT



MAIN DECK PLAN
SCALE/ N.T.S



TRANSVERSE SECTION
LKG. FWD / N.T.S

PRINCIPAL PARTICULARS

LENGTH OVERALL - 100.584 M.(330'-00")
 BREADTH MLD. - 36.576 M.(120'-00")
 DEPTH MLD. - 6.096 M.(20'-00")
 DRAFT LOADED - 4.750 M.(15'- 7")
 DECK LOAD - 15.000 TON/M2
 CLASS NOTATION: ABS + A1 TANK BARGE

NOTE :
 1. ALL DIMENSIONS ARE IN MM UNLESS INDICATED OTHERWISE.

REV	DATE	DESCRIPTION	ORIGINATOR	REVIEWER	APPROVER	CLIENT	APPROVED	DATE
7	08-10-19	UPDATED DWG. AS PER STBD - FWD ROLLER & AFT STBD. BOLLARD REMOVAL	JB	RS	CT	-	This Document Contains Confidential Proprietary Information And Shall Not Be Copied, Reproduced, Used, Transferred To Other Documents Or Disclosed To Others For Any Purpose Unless Authorized By EOS	Purchaser Review & Comments shall not be assumed to indicate either responsibility or liability for accuracy & completeness of this document or to alter any contractual terms and conditions.
6	08-10-19	UPDATED DWG. WITH ADDT DAMAGE CNTRL & SALVAGE P/P BOX	JB	RS	CE	-		
5	29-10-18	UPDATED DRAWING AS PER DECK BOLLARDS REMOVAL	JB	RS	CE	-		
4	29-10-18	UPDATED DRAWING AS PER ADDITIONAL MAN-HOLES	JB	RS	CE	-		
3	10-10-17	UPDATED DRAWING AS PER REMOVAL OF AFT SINGLE BOLLARD	JB	RS	SS	-	CONTRACT NO. : -	
2	27-04-17	AS - FITTED	JB	RS	SS	-	DRAWN : JB	
1	01-06-16	UPDATED DRAWING	JB	RS	CT	-	DFT. CHECKED : RS	
0	21-12-12	ISSUED FOR REFERENCE & RECORD	IK	-	-	-	ENGINEER :	

EOS
EXPRESS OFFSHORE SOLUTIONS

10 HOE CHIANG ROAD,
#09-01 KEPPEL TOWERS,
SINGAPORE 089315
TEL: (65) 6545 6211
FAX: (65) 6820 0167

CONTRACT TITLE: Marine Transportation of Offshore Pipe Lines

TITLE: **GENERAL ARRANGEMENT PLAN**
BARGE - EOS 3303

EOS DWG. NO. EOS-ENGG-050

SHT. 1 OF 1 REV. 7