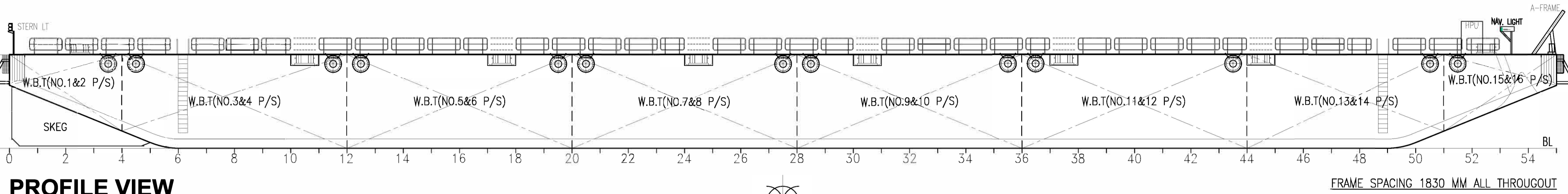


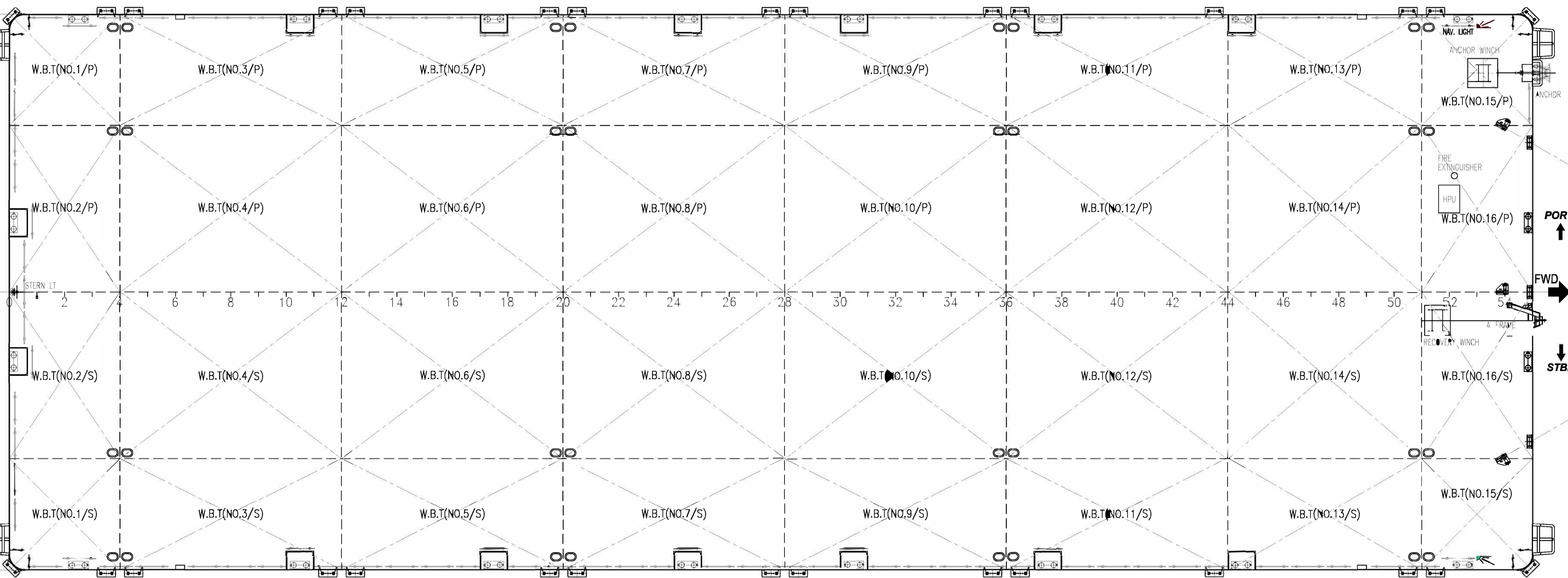
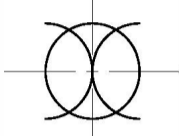
GENERAL ARRANGEMENT PLAN for " EOS 3306 "

← AFT

FWD →

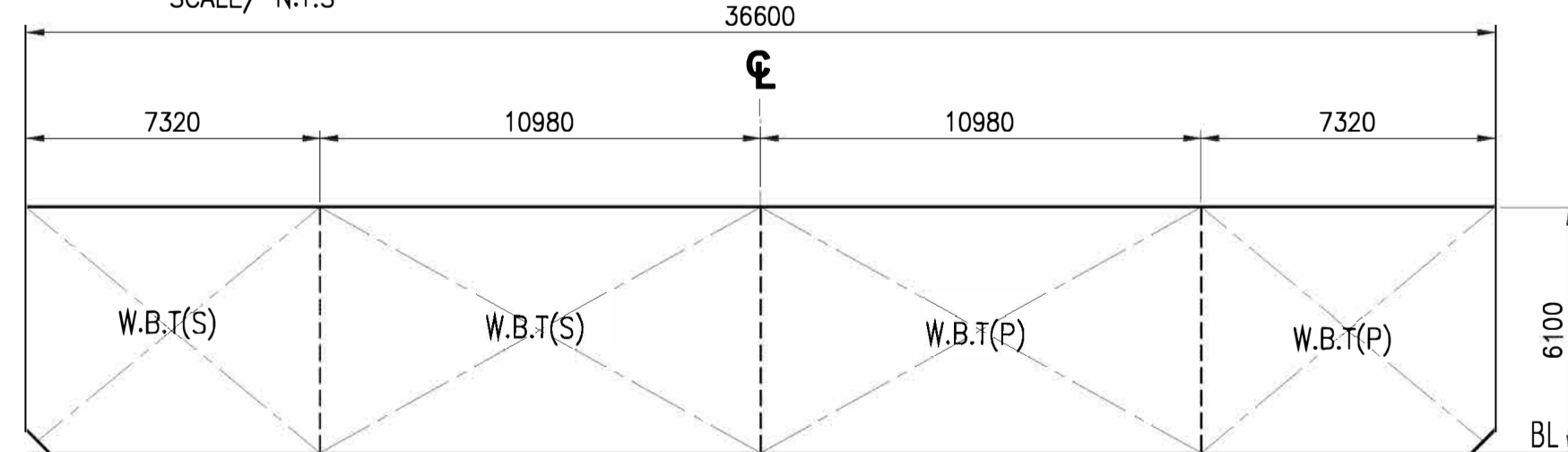


PROFILE VIEW
(SCALE/ N.T.S - STBD SHOWN)



MAIN DECK PLAN

SCALE/ N.T.S



TRANSVERSE SECTION

LKG. FWD / N.T.S

PRINCIPAL PARTICULARS

LENGTH OVERALL - 100.65 M. (330'-00")
 BREADTH MLD. - 36.60 M. (120'-00")
 DEPTH MLD. - 6.10 M. (20'-00")
 DRAFT MLD. - 4.70 M. (15'-05")
 DECK LOAD - 20.00 TON/M2
 CLASS NOTATION: ABS + A1 TANK BARGE

NOTE :
1. ALL DIMENSIONS ARE IN MM UNLESS SPECIFIED OTHERWISE.

DRAWING NO	REV	REFERENCE DRAWING	REV	DATE	DESCRIPTION	ORIGINATOR	REVIEWER	APPROVER	CLIENT	APPROVED	DATE
			3	18-11-20	AS - FITTED	JBI	RS	CE	-	CONTRACT NO. : -	
			2	26-05-19	UPDATED DWG. AS PER VERIFIED AT SITE	JBI	RS	CE	-	DRAWN : JBI	
			1	27-04-16	UPDATED WITH PROPER LOCATION OF DECK FITTINGS	JBI	RS	CT	-	DFT. CHECKED : RS	
			A	11-01-12	REVISED AS FITTED	NYEO/LUA	QI	-	-	ENGINEER :	
										APPROVED : CT	25-04-16
										SCALE [A3 SIZE] :	DATE

This Document Contains Confidential Proprietary Information And Shall Not Be Copied, Reproduced, Used, Transferred To Other Documents Or Disclosed To Others For Any Purpose Unless Authorized By EOS

Purchaser Review & Comments shall not be assumed to indicate either responsibility or liability for accuracy & completeness of this document or to alter any contractual terms and conditions.



3 HARBOURFRONT PLACE,
11-01/04 HARBOURFRONT TOWER 2,
SINGAPORE 099254
TEL: (65) 6545 6211
FAX: (65) 6275 6212

CONTRACT TITLE: Marine Transportation of Offshore Pipe Lines

TITLE: **GENERAL ARRANGEMENT PLAN
BARGE - EOS 3306**

EOS DWG. NO. EOS-ENGG-034 SHIT. 1 OF 1 REV. 3