

EOS 302

Flat Top Barge

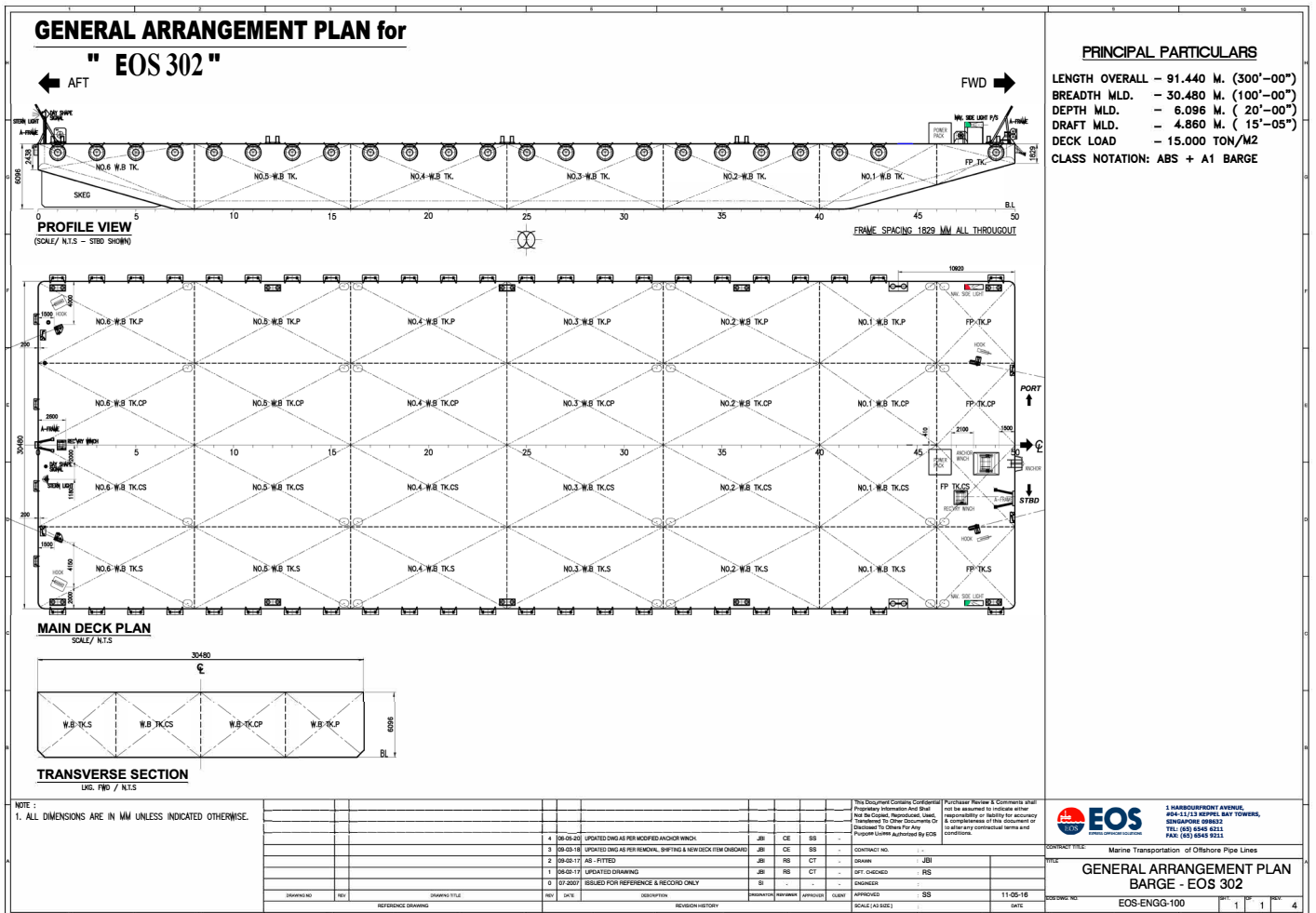
GENERAL

Year Built	2009
Flag / Port of Registry	Singapore
Class / classification	ABS
GRT	4,836 t
Length Overall	91.44 m (300 ft)
Breadth	30.48 m (100 ft)
Depth Loaded	6.09 m (20 ft)
Draft (Summer Loadline)	4.836 m
Deck Strength	15 t / m ²
Deadweight	10,793 T
Lightship Weight	1,420.00 T



DECK EQUIPMENT

Anchor Winch	1 x Hydraulic Winch
Anchor	Stockless Anchor, 2100kg
Smit Brackets	2 x Forward 2 x Aft
Stanchions	NA
Navigation Lights	3 x solar powered. Colreg type
Mooring Bollards	6 x deck type mooring bollards at Port 6 x deck type mooring bollards at Aft
Recovery Winch	1 x Hydraulic Winch at Forward 1 x Manual Winch at Aft
A-Frame	1 x at Forward
Others	Tire Fenders



Particulars are believed to be correct but not guaranteed. Owners reserve the rights to amend the specifications without notifications. Particulars are entirely without warranty as to correctness and interested parties must inspect vessel's certificates, drawings or physical inspection of vessel.