

# M. ENTERPRISE

70M DP2 5150BHP ROV SUPPORT VESSEL



## KEY PARTICULARS

- DP2
- Built 2007
- Indonesia flagged
- 70 pax accommodation
- SPS compliant
- Mezzanine Deck
- Moonpool 3m x 3m
- 20T man-riding crane

# VESSEL SPECIFICATIONS

## PRINCIPAL PARTICULARS

YEAR BUILT	2007
PLACE BUILT	Jiangsu Zhenjiang Shipyard, China
DESIGN	International Maritime Consultants
FLAG	Indonesia
LENGTH OVERALL	70.25 m
LENGTH BP	65.18 m
BREADTH MOULDED	16.00 m
DEPTH MOULDED	6.00 m
DRAFT (MAX)	5.10 m
FREEBOARD (SLL)	0.90 m
CLASS	BV / BKI
NOTATION	I x Hull x Mach; Supply Vessel; Unrestricted Navigation; ALM (SS), Dynapos AM/AT R
GRT/ NRT	2417.00 T /719.00 T
DEADWEIGHT	2196.00 T

## DECK PARTICULARS

MAIN DECK CLEAR AREA	387.00 m <sup>2</sup>
MEZZ DECK CLEAR AREA	114.00 m <sup>2</sup>
TOTAL CLEAR DECK AREA	501.00 m <sup>2</sup>
DECK CARRYING LOAD	300.00 T
DECK STRENGTH	7.50 T/m <sup>2</sup>

## PERFORMANCE

MAXIMUM SPEED	11.5 Knots @ 13T/24Hrs
ECONOMIC SPEED	9.0 Knots @ 10 T/24hrs

## PROPULSION SYSTEM

MAIN ENGINES	2 x Caterpillar 3516B, 2575 BHP, 1920 kW @ 1600 RPM
AUXILIARY ENGINES	3 x Caterpillar C18, 438 kW @ 1500 RPM, 960 L/day
EMERGENCY GENERATOR	Caterpillar CAT 3056, 92.5 kW
SHAFT GENERATOR	2 x Leroy Somer LSAM 49.1 L9, 540 kW
ROV GENERATOR	3 x Cummins QSM11, 400 kW
AIR COMPRESSOR	2 x Electro 25 m <sup>3</sup> /hr X 30 kg/cm <sup>2</sup>
BOW THRUSTER 1	Electric Driven c/w CPP, 7.2 T Thrust
BOW THRUSTER 2	Engine Driven c/w CPP, 8.0 T Thrust
STERN THRUSTER	Electric Driven c/w CPP, 6.0 T Thrust
PROPELLERS	2 x CPP, Fixed Nozzles
STEERING GEAR SYSTEM	2 x Electro Hydraulic
RUDDER	2 x Electric Hydraulic, 5.6 T Torque

## TANK CAPACITIES

FUEL OIL	768.49 m <sup>3</sup>
FRESH WATER	648.72 m <sup>3</sup>
LIQUID MUD	241.92 m <sup>3</sup>
BRINE	242.00 m <sup>3</sup>
BILGE	11.47 m <sup>3</sup>
BALLAST/DRILL WATER	413.31 m <sup>3</sup>
DRY BULK	170.00 m <sup>3</sup> , 4 x 42.50 m <sup>3</sup> per Tank

## CARGO DISCHARGE CAPACITIES

FUEL OIL PUMP	100 m <sup>3</sup> /hr @ 60 m head
FRESH WATER PUMP	100 m <sup>3</sup> /hr @ 60 m head
DRILL WATER PUMP	100 m <sup>3</sup> /hr @ 60 m head
LIQUID MUD PUMP	2 x 66 m <sup>3</sup> /hr @ 60 m head
BILGE/BALLAST/FIRE/GS	2 x 65 m <sup>3</sup> /hr @ 60 m head
DRY BULK COMPRESSOR	1210 m <sup>3</sup> /hr @ 5.5 bar

## DP SYSTEM

DP2, Kongsberg, 2 Veripos DGPS, Sonardyne USBL, Fanbeam, 3 Anemometers, 2 Motion Sensors, Independent Joystick

## DECK EQUIPMENT

ANCHORS & CHAIN	2 x AC 14 Anchors 2000 kg, 2 x 330 m x 40 mm dia U2 Stud Link Chains
TUGGER WINCH	5 T Electro Hydraulic
CAPSTAN	2 x Electro Hydraulic 10 T @ 15 m/min
ANCHOR WINDLASS C/W BOW	Electro Hydraulic 10 T @ 15 m/min c/w 2 x Warping Drums (Independently Clutched)
CRANE 1	Knuckle Boom - SWL 20T @ 6m radius, SWL 9T @ 11 m radius (man-riding)
CRANE 2	SWL 3 T x 7 m radius
A FRAME	Nil
MEZZANINE DECK	20.50mLx12.80mW, Strength 7.50T/m <sup>2</sup>
MOON POOL	3.00mLx3.00mW
STERN ROLLER	1.50m Dia x 3.50m Length, 200.00T SWL

## ACCOMMODATION

CABINS X BERTHS	Main: 1x2, 1x4, 2x4 Lower: 4x2, 4x4, 1x9 Upper: 2x1, 6x2, 2x2, 1x5
TOTAL PAX	70

## LIFE-SAVING EQUIPMENT

LIFE RAFTS	8 x 25 men, SOLAS Compliant
RESCUE BOAT C/W DAVIT	1 x 6 men, 20 HP Outboard, 20 L Fuel, SOLAS Compliant

# VESSEL WORK HISTORY

END USER	WORK LOCATION	END DATE	SCOPE OF WORK
Various oil companies	Indonesia	2021	Pipeline repair
Chevron Thailand	Thailand	2020	Accommodation support duties
Chevron Thailand	Thailand	2019	Accommodation support duties
Prysmian Group	Philippines	2018	ROV support duties
Ophir Thailand	Thailand	2017	Anchor handling, towing and supply duties
Chevron Thailand	Thailand	2016	Anchor handling, towing and supply duties
Chevron Thailand	Thailand	2015	ROV and diving support duties
Chevron Thailand	Thailand	2013	ROV Support and diving support duties



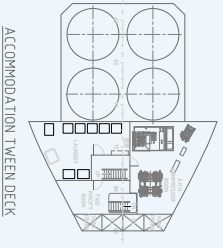
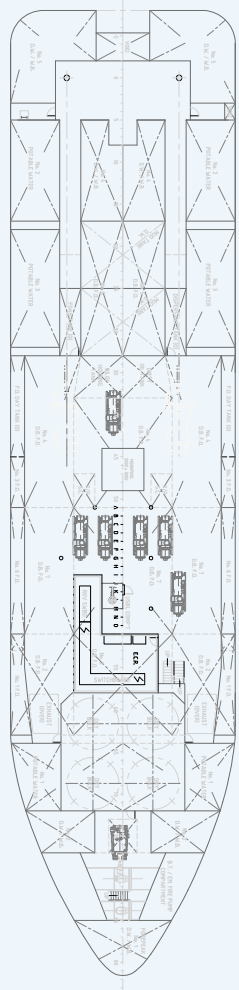
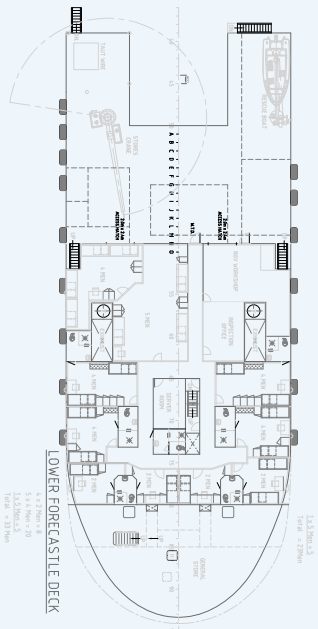
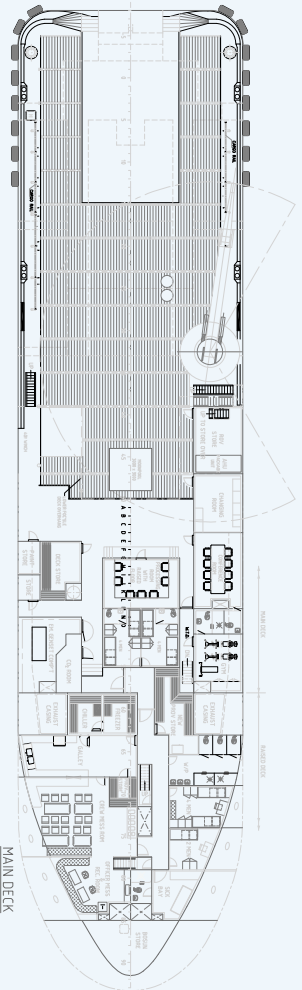
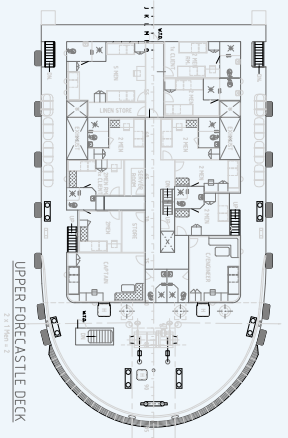
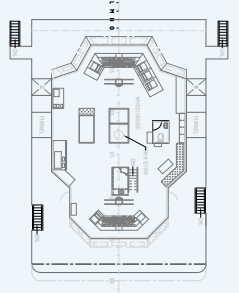
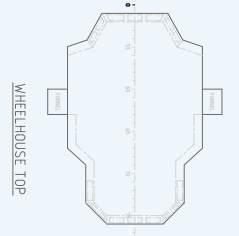
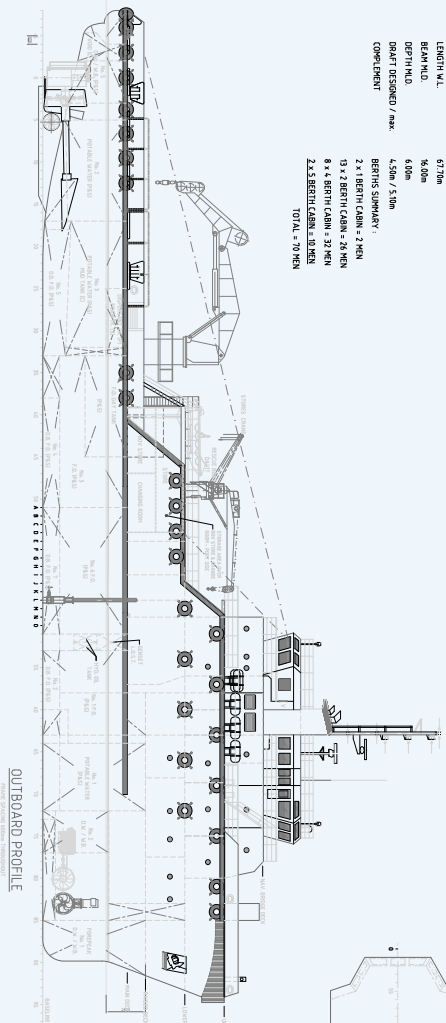
Vessel particulars are believed to be correct but are not guaranteed. Owners reserve the rights to amend the specifications without notification. Particulars are entirely without warranty as to correctness. Interested parties must inspect vessel's certificates, drawings or conduct a physical inspection of vessel.

**PRINCIPAL PARTICULARS:**

LENGTH O.A. 70.25m  
 LENGTH M.L. 67.00m  
 BEAM M.L. 16.00m  
 DEPTH M.L.D. 6.00m  
 DRAUGHT DESIGNED / max. 4.50m / 5.00m  
 COMPLEMENT

**BERTHS SUMMARY:**

2 x 1 BERTH CABIN = 2 MEN  
 13 x 2 BERTH CABIN = 26 MEN  
 8 x 4 BERTH CABIN = 32 MEN  
 2 x 5 BERTH CABIN = 10 MEN  
**TOTAL = 70 MEN**



RE-ENTRY	NO.	NO.	NO.	NO.	NO.
RE-ENTRY	1	2	3	4	5
RE-ENTRY	6	7	8	9	10
RE-ENTRY	11	12	13	14	15
RE-ENTRY	16	17	18	19	20
RE-ENTRY	21	22	23	24	25
RE-ENTRY	26	27	28	29	30
RE-ENTRY	31	32	33	34	35
RE-ENTRY	36	37	38	39	40
RE-ENTRY	41	42	43	44	45
RE-ENTRY	46	47	48	49	50
RE-ENTRY	51	52	53	54	55
RE-ENTRY	56	57	58	59	60
RE-ENTRY	61	62	63	64	65
RE-ENTRY	66	67	68	69	70

**CLIENT:** MCLVN EXPRESS OFFSHORE

**TITLE:** GENERAL ARRANGEMENT PLAN

**SHIP NAME:** MCLVN ENTERPRISE

**COMPONENT NO.:** MEO/ME/000/000001

**SCALE:** 1:250

**DATE:** 10/01/2021

**DESIGNER:** MEO

**CHECKED BY:** MEO

**DATE:** 10/01/2021

**APPROVED BY:** MEO

**DATE:** 10/01/2021

# SPECIALISED VESSEL SERVICES

Tel: +65 6545 6211 / 6829 6100 | Email: svcs.commercial@meogroup.com