

EXPRESS 60



FAST UTILITY CRAFT/ CREWBOAT



PRINCIPAL PARTICULARS

YEAR BUILT	2007
PLACE BUILT	Singapore, Penguin Shipyard
DESIGN	FLEX 36
FLAG	Panama
LENGTH OVERALL	36.00 m
LENGTH BP	32.50 m
BREADTH MOULDED	7.60 m
DEPTH MOULDED	3.65 m
DRAFT (MAX)	1.88 m
FREEBOARD (SLL)	1.50 m
CLASS	DNV
NOTATION	1A Offshore Service Vessel R4
GRT/ NRT	239.00 T / 72.00 T
DEADWEIGHT	113.00 T

DECK PARTICULARS

CLEAR DECK AREA	80.00 m ²
DECK CARRYING LOAD	25.00 T
DECK STRENGTH	2.00 T/m ²

PERFORMANCE

MAXIMUM SPEED	22 Knots @ 20 T DWT
ECONOMIC SPEED	18 Knots @ 20 T DWT

TANK CAPACITIES

FUEL OIL	30 m ³ /hr @ 5 Bar
FRESH WATER	30 m ³ /hr @ 5 Bar

PROPULSION SYSTEM

MAIN ENGINES	3 x Cummins x KTA 38 M2, 1350 BHP, 1900 RPM, Total 4050 BHP, 3022 kW
AUXILIARY ENGINES	2 x Cummins 6BT5.9M, 91 kW @ 1500 RPM
PORTABLE GENERATOR	220 v 45 V / 50 HZ
BOW THRUSTER	75 kW Electro Hydraulic Bow Thruster
PROPELLERS	3 x Fixed Pitch Propellers
STEERING GEAR SYSTEM	2 x Duplex Electro Hydraulic Pump System
RUDDER	2 Units

CARGO DISCHARGE CAPACITIES

FUEL OIL PUMP	30 m ³ /hr @ 5 Bar
FRESH WATER PUMP	30 m ³ /hr @ 5 Bar
BILGE	25 m ³ /hr

DECK EQUIPMENT

ANCHOR WINDLASS C/W BOW	Leeson Electric - C 11 2T 17 FZ 22A - 5.5 HP / 4 Kw
-------------------------	---

ACCOMMODATION

PASSENGER SEATS	62 Seats
CREW	2 x 1, 2 x 4 = 10 Berths

EXTERNAL FIRE-FIGHTING EQUIPMENT

FI-FI NOTATION	Equivalent to 1/4 FiFi
FI-FI MONITORS	600 m ³ /hr, 130 m Throw Length
FI-FI PUMP	600 m ³ /hr (GM12V-71T1 Engine)
OIL DISPERSANT SYSTEM	Nil

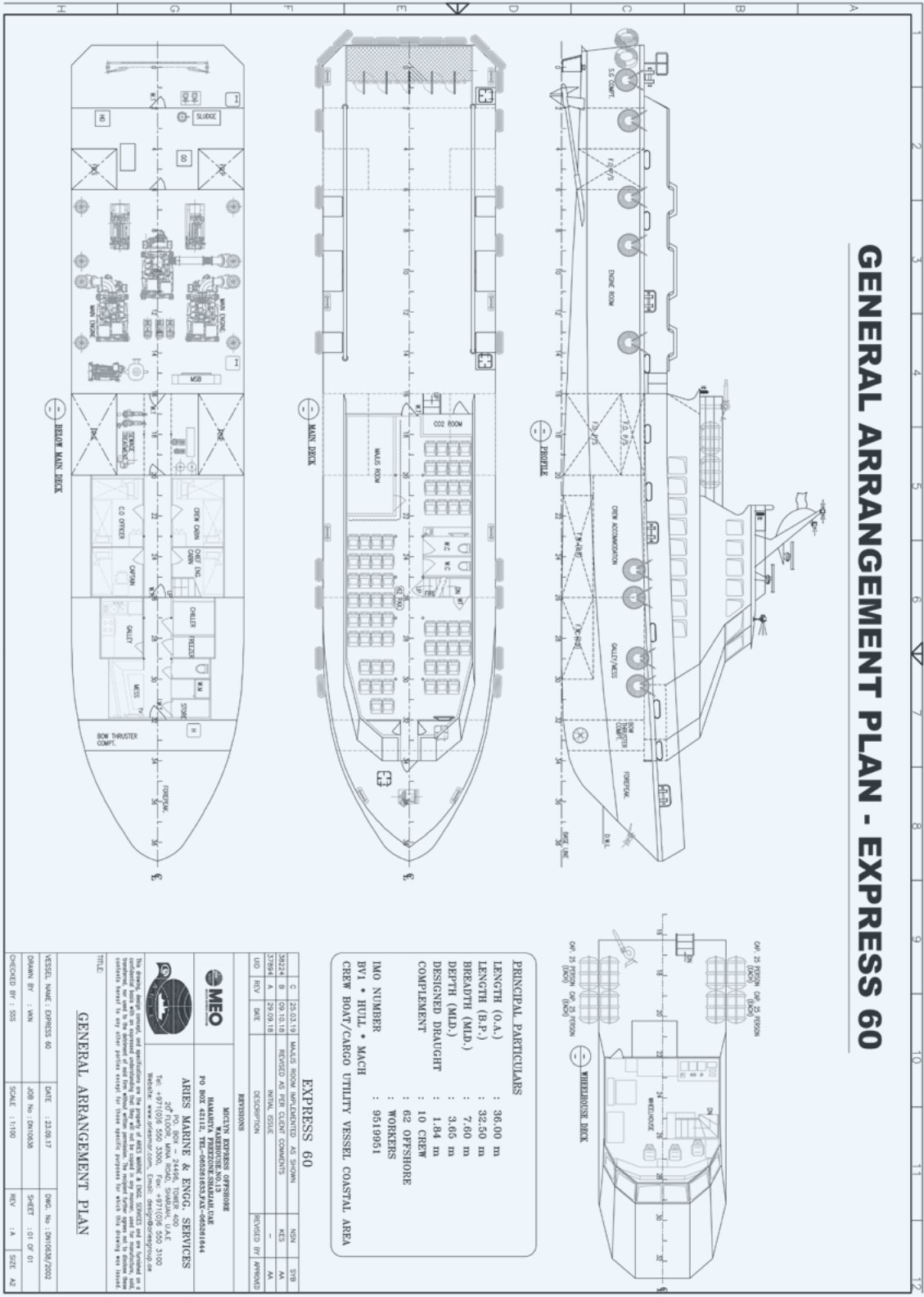
INTERNAL FIFI & ANTI-POLLUTION EQUIPMENT

EMERGENCY FIRE PUMP	50 m ³ /hr @ 30 m Head Ascue
CO2 FI-FI SYSTEM	CA80/10-A
FIRE DETECTION & ALARM	Fixed CO2 System for Engine Room Precept Fire Control Panel, Manufactured in the U.K.

LIFE-SAVING EQUIPMENT

LIFE RAFTS	8 x 25 men, SOLAS Compliant
------------	-----------------------------

GENERAL ARRANGEMENT PLAN - EXPRESS 60



PRINCIPAL PARTICULARS

LENGTH (O.A.) : 36.00 m
 LENGTH (B.P.) : 32.50 m
 BREADTH (M.D.) : 7.60 m
 DEPTH (M.D.) : 3.66 m
 DESIGNED DRAUGHT : 1.84 m
 COMPLEMENT : 10 CREW
 : 62 OFFSHORE WORKERS
 IMO NUMBER : BY1 • HULL • MACH
 CREW BOAT/CARGO UTILITY VESSEL COASTAL AREA

EXPRESS 60

NO	REV	DATE	DESCRIPTION	REVISION BY	APPROVED BY
01			INITIAL SCALE		
02			REVISIONS		

MICLYN EXPRESS OFFSHORE
 HAKATTA PIREZONE-STADIALE CAE
 PO BOX 42112, TEL: +91 98203 23232 FAX: +91 98203 41444
ARIES MARINE & ENGG. SERVICES
 207 Floor, Main Road, Sowdham, UAE
 Tel: +971(0)9 550 3300, Fax: +971(0)9 550 3100
 Website: www.ariesmarine.com, Email: sales@ariesmarine.com

GENERAL ARRANGEMENT PLAN

VESSEL NAME: EXPRESS 60	DATE: 12/04/17	DRG. NO: 091009/0201
DRAWN BY: WAN	JOB NO: 091009	SHEET: 01 OF 01
CHECKED BY: SSS	SCALE: 1:100	REV: 1A SIZE: A2

Vessel particulars are believed to be correct but are not guaranteed. Owners reserve the rights to amend the specifications without notification. Particulars are entirely without warranty as to correctness. Interested parties must inspect vessel's certificates, drawings or conduct a physical inspection of vessel.