

SAMSON SUPPLIER



DYNAMIC POSITIONED FAST CREW/ UTILITY/ SUPPLY VESSEL



PRINCIPAL PARTICULARS

YEAR BUILT	2008
PLACE BUILT	Singapore
DESIGN	Strategic Marine
FLAG	Panama
LENGTH OVERALL	40.37 m
LENGTH BP	37.00 m
BREADTH MOULDED	7.50 m
DEPTH MOULDED	3.22 m
DRAFT (MAX)	1.60 m
FREEBOARD (SLL)	1871 mm
CLASS	DNV
NOTATION	1A HSLC Crew
GRT/ NRT	237.00 T / 71.00 T
DEADWEIGHT	82.98 T

DECK PARTICULARS

CLEAR DECK AREA	120 m ²
DECK CARRYING LOAD	40.00 T
DECK STRENGTH	2.00 T/m ²

PERFORMANCE

MAXIMUM SPEED	18 Knots
ECONOMIC SPEED	12 Knots

TANK CAPACITIES

FUEL OIL	59.45 m ³
FRESH WATER	25.74 m ³

PROPULSION SYSTEM

MAIN ENGINES	2 x Cummins KTA 38M2, 1350 BHP, 1 x Cummins KTA 50M2, 1800 BHP @ 1900RPM, Total 4500 BHP
AUXILIARY ENGINES	2 x Cummins 6BT-5.9D(m), 80 kW @ 1500 RPM
PORTABLE GENERATOR	Nil
BOW THRUSTER	1 x Cummins M14TA, 430 HP; 2 x Petters, S-65-160 AL-DP
PROPELLERS	3 x Mikado < CAC703
STEERING GEAR SYSTEM	Scandia Servo Steering
RUDDER	3 Units

CARGO DISCHARGE CAPACITIES

FUEL OIL PUMP	30 m ³ /hr, Azcue
FRESH WATER PUMP	13.5 m ³ /hr, Azcue
BILGE	30 m ³ /hr, Azcue

DECK EQUIPMENT

ANCHOR WINDLASS C/W BOW CRANE	Hypac Electric Hydraulic Drum Winch
CRANE	Nil

ACCOMMODATION

PASSENGER SEATS	66 Seats
CREW	2 x 1, 4 x 2 = 10

EXTERNAL FIRE-FIGHTING EQUIPMENT

FI-FI NOTATION	SCUM
FI-FI MONITORS	1200 m ³ /hr
FI-FI PUMP	1200 m ³ /hr
OIL DISPERSANT SYSTEM	Nil

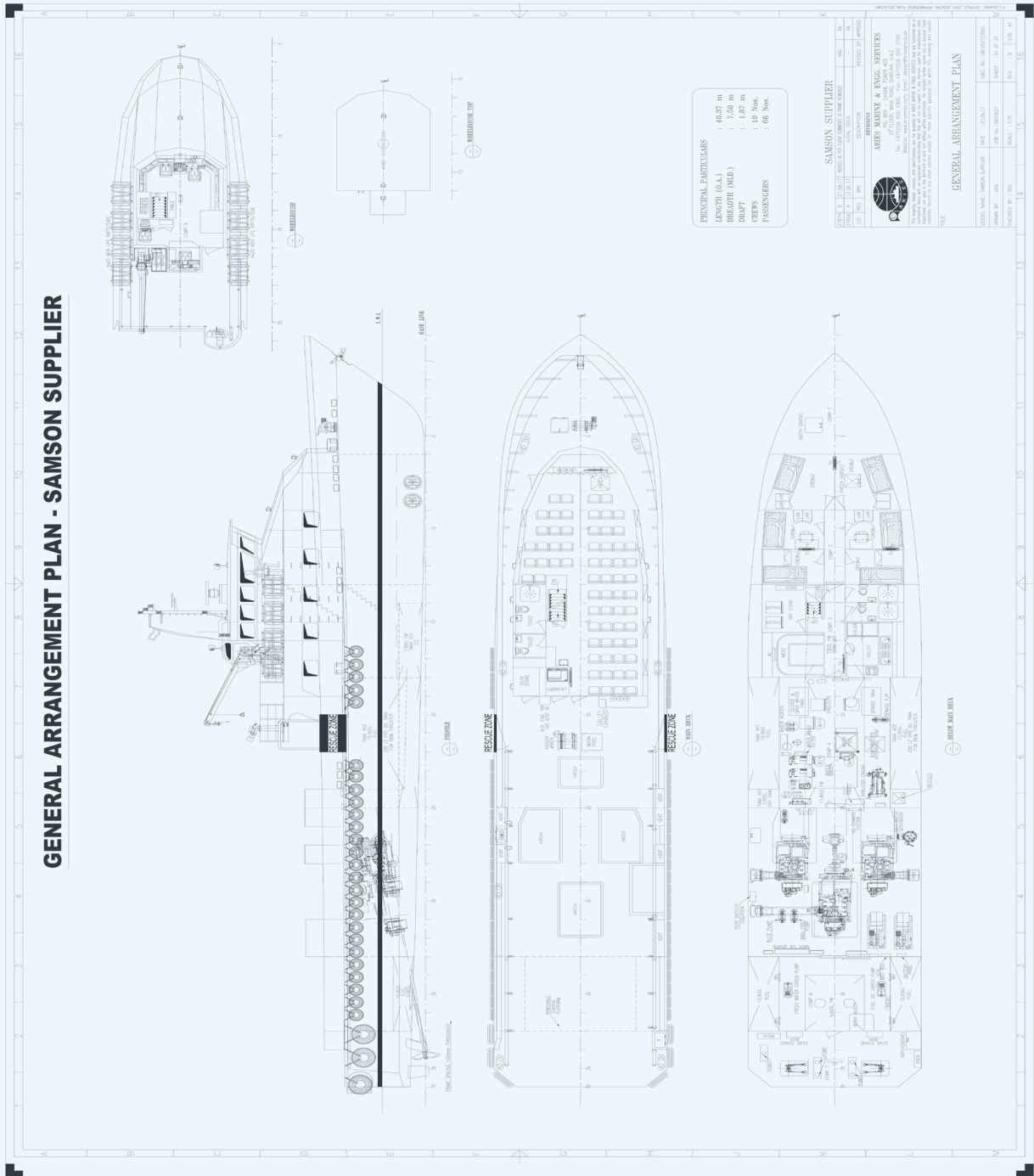
INTERNAL FIFI & ANTI-POLLUTION EQUIPMENT

EMERGENCY FIRE PUMP	Daishin, 52 L/min
CO2 FI-FI SYSTEM	Fixed CO2 System for Engine Room
FIRE DETECTION & ALARM	Optical Smoke, Multi-Sensor Smoke & Heat Detector

LIFE-SAVING EQUIPMENT

LIFE RAFTS	8 x 20 men, SOLAS Compliant
RESCUE BOAT C/W DAVIT	Nil

GENERAL ARRANGEMENT PLAN - SAMSON SUPPLIER



PRINCIPAL PARTICULARS
 LENGTH (O.A.) : 40.37 m
 BREADTH (MID.) : 7.50 m
 DRAFT : 1.07 m
 DECKS : 03 Nos.
 PASSENGERS : 06 Nos.

SAMSON SUPPLIER	
ITEM NO.	DESCRIPTION
01	BRIDGE
02	ENGINE ROOM
03	CREW QUARTERS
04	DECK
05	WATER TANK
06	WATER TANK
07	WATER TANK
08	WATER TANK
09	WATER TANK
10	WATER TANK
11	WATER TANK
12	WATER TANK
13	WATER TANK
14	WATER TANK
15	WATER TANK
16	WATER TANK

GENERAL ARRANGEMENT PLAN

SCALE: 1:100 (PLAN), 1:50 (ELEVATION)

DATE: 15/03/2023

DESIGNER: M.E.O. GROUP

CHECKED BY: [Signature]

APPROVED BY: [Signature]

Vessel particulars are believed to be correct but are not guaranteed. Owners reserve the rights to amend the specifications without notification. Particulars are entirely without warranty as to correctness. Interested parties must inspect vessel's certificates, drawings or conduct a physical inspection of vessel.