

SAMSON SUPPORTER



DYNAMIC POSITIONED FAST CREW/ UTILITY/ SUPPLY VESSEL



PRINCIPAL PARTICULARS

YEAR BUILT	2009
PLACE BUILT	Singapore
DESIGN	Strategic Marine
FLAG	Panama
LENGTH OVERALL	40.37 m
LENGTH BP	35.00 m
BREADTH MOULDED	7.50 m
DEPTH MOULDED	3.22 m
DRAFT (MAX)	1.70 m
FREEBOARD (SLL)	1.87 m
CLASS	DNV
NOTATION	1A HSLC Crew
GRT/ NRT	237.00 T / 71.00 T
DEADWEIGHT	82.98 T

DECK PARTICULARS

CLEAR DECK AREA	120.00 m ²
DECK CARRYING LOAD	40.00 T
DECK STRENGTH	2.00 T/m ²

PERFORMANCE

MAXIMUM SPEED	22 Knots @ 20 T DWT
ECONOMIC SPEED	18 Knots @ 20T DWT

TANK CAPACITIES

FUEL OIL	59.45 m ³
FRESH WATER	25.73 m ³

PROPULSION SYSTEM

MAIN ENGINES	2 x Cummins KTA 38M2, 1350 BHP, 1 x Cummins KTA 50M2, 1800 BHP @ 1900RPM, Total 4559 BHP, 3356 kW
AUXILIARY ENGINES	2 x Cummins 6BT-5.9D(m), 80 kW @ 1500 RPM
PORTABLE GENERATOR	Nil
BOW THRUSTER	2 x Petters S-65-160AL-DP @ 150HP
PROPELLERS	3 x Mikado < CAC703
STEERING GEAR SYSTEM	2 x PL 14-159
RUDDER	2 Units

CARGO DISCHARGE CAPACITIES

FUEL OIL PUMP	20 m ³ /hr 55 m @ head, 415 V
FRESH WATER PUMP	13.5 m ³ /hr @ 55 m head, 415 V
BILGE	30 m ³ /hr @ 54 m head

DECK EQUIPMENT

ANCHOR WINDLASS C/W BOW	Hypac Electric Hydraulic Drum Winch
CRANE	Nil

ACCOMMODATION

PASSENGER SEATS	62 Seats
CREW	2p x 4, 1p x 2=10

EXTERNAL FIRE-FIGHTING EQUIPMENT

FI-FI NOTATION	SCUM
FI-FI MONITORS	1200 m ³ /hr
FI-FI PUMP	1200 m ³ /hr
OIL DISPERSANT SYSTEM	Nil

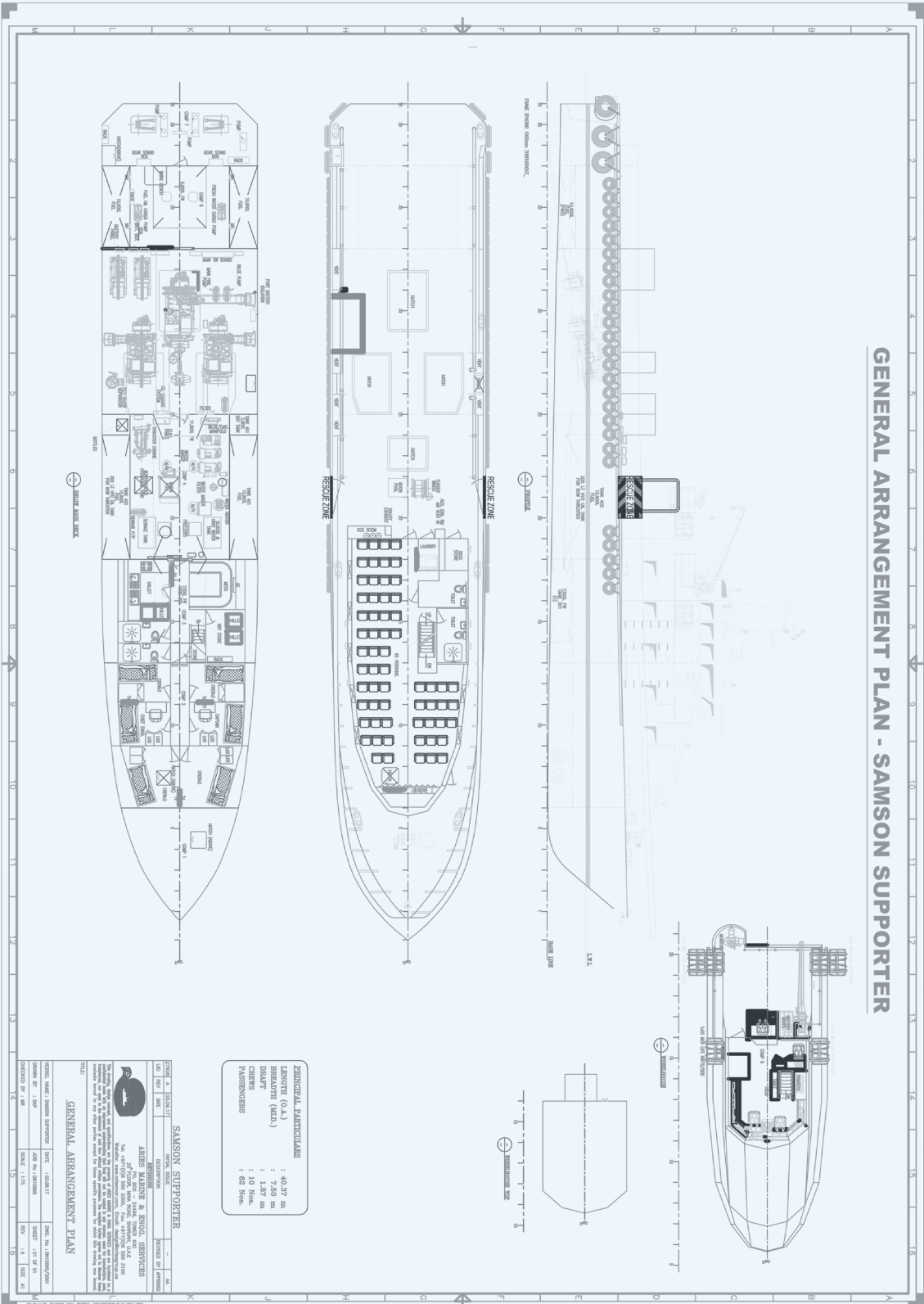
INTERNAL FIFI & ANTI-POLLUTION EQUIPMENT

EMERGENCY FIRE PUMP	32 m Max Total Head, 520 L/min Max Quantity
CO2 FI-FI SYSTEM	Fixed CO2 System for Engine Room
FIRE DETECTION & ALARM	Optical Smoke, Multi-Sensor Smoke & Heat Detector

LIFE-SAVING EQUIPMENT

LIFE RAFTS	4 x 25 men, SOLAS Compliant
RESCUE BOAT	Nil

GENERAL ARRANGEMENT PLAN - SAMSON SUPPORTER



Vessel particulars are believed to be correct but are not guaranteed. Owners reserve the rights to amend the specifications without notification. Particulars are entirely without warranty as to correctness. Interested parties must inspect vessel's certificates, drawings or conduct a physical inspection of vessel.