

EOS 283

FLAT-TOP DECK CARGO BARGE



PRINCIPAL PARTICULARS

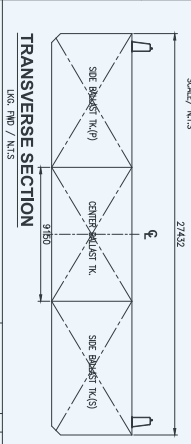
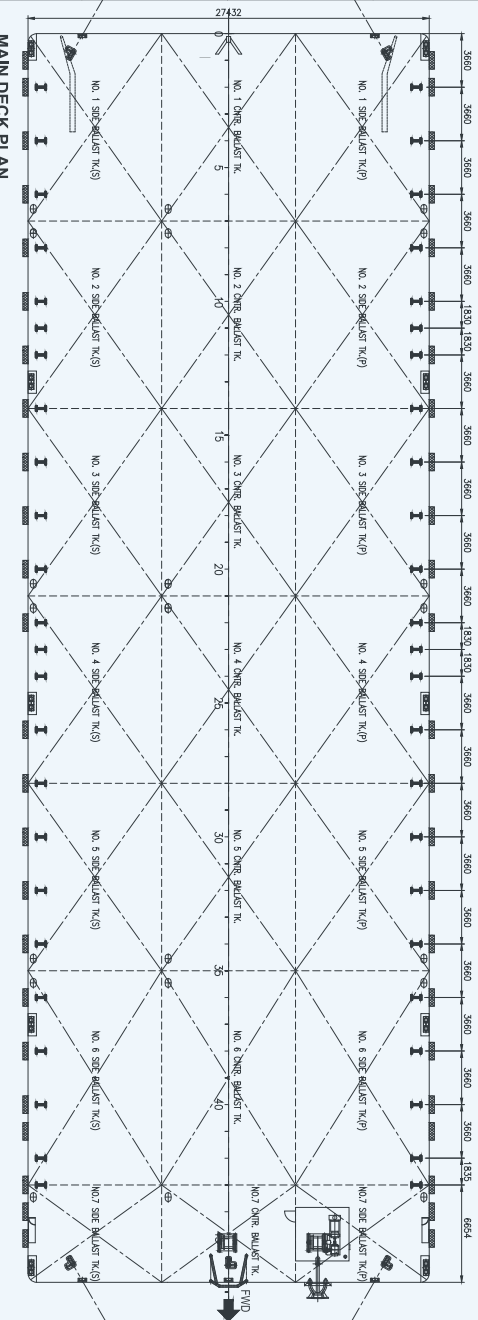
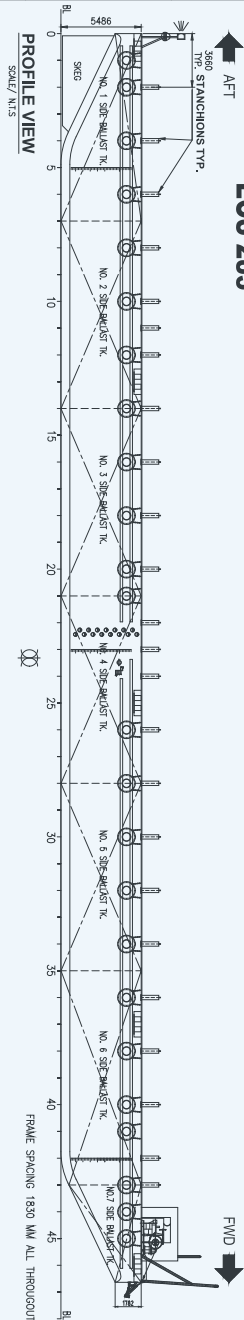
YEAR BUILT	2014
PORT OF REGISTRY	Indonesia
CLASS	Bureau Veritas
LENGTH OVERALL	85.34 m (280 ft)
BREADTH	27.43m (90 ft)
DEPTH MOULDED	5.48 m (18 ft)
DRAFT LOADED	4.29 m (14.1 ft)
DEADWEIGHT	7,889 T
GRT / NRT	3,396 T/ 1,018 T
DECK STRENGTH	20 T / m ²
TRANSVERSE BULKHEAD	Six (6)
LONGITUDINAL BULKHEAD	Two (2)

DECK EQUIPMENT

ANCHOR WINCH	1 x 10 t anchor windlass (Diesel Driven)
ANCHOR SMIT BRACKETS	1 x 1,920 kg stockless bower anchor 4 x smit towing brackets - P&S, fwd and aft
STANCHIONS	24 stanchions on each side
NAVIGATION LIGHTS	1 set solar type, P&S at fwd and aft
MOORING BOLLARDS	10 x mooring bollards of dia. 10" (recessed)
OTHER	1 x 5 t hand winch, 4 x closed Chock, 124 x

GENERAL ARRANGEMENT PLAN for

" EOS 283 "



NOTE :
 1. ALL DIMENSIONS ARE IN MM UNLESS INDICATED OTHERWISE.
 2. REFER TO " EXTERNAL TYP. STATIONING DETAIL (AS FITTED) " DWG. NO. G-100-01, REV. B, DATED 17/08/14 BY NANJONG TONGSHENG SHIPBUILDING CO., LTD.

NO.	REVISION	DATE	DESCRIPTION	BY	CHECKED	DATE

PRINCIPAL PARTICULARS
 LENGTH OVERALL - 85,344 M. (280'-00")
 BREADTH MLD. - 27,432 M. (90'-00")
 DEPTH MLD. - 5,486 M. (18'-00")
 DRAFT MLD. - 4,300 M. (14'-10")
 DECK LOAD - 20,000 TON/M2
 CLASS NOTATION: PONTON I HULL
 ALL TANKS ARE BALLASTABLE TANK

3 LABOURER/ROOF PLATE, SIMONS/ROOF TOWER 2.
 TEL: (82) 9245 2211
 FAX: (82) 9245 2210

EOS
 EXPRESS OFFSHORE SOLUTIONS

GENERAL ARRANGEMENT PLAN
 BARGE - EOS 283
 EOS-ENGQ-003

DATE: 1/10/15

Vessel particulars are believed to be correct but are not guaranteed. Owners reserve the rights to amend the specifications without notification. Particulars are entirely without warranty as to correctness. Interested parties must inspect vessel's certificates, drawings or conduct a physical inspection of vessel.